

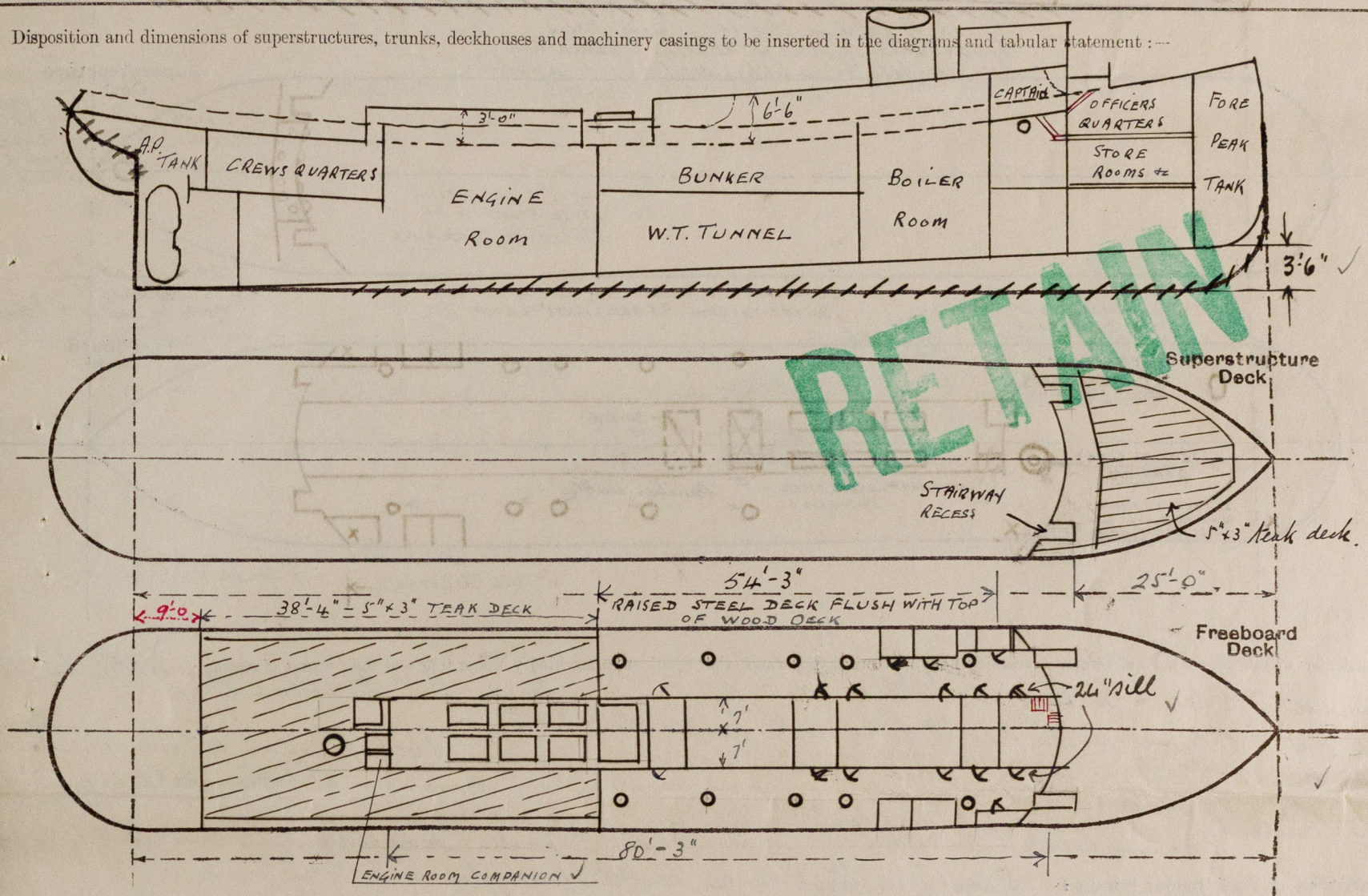
Lloyd's Register of Shipping.

SURVEYS FOR FREEBOARD.

(CONDITIONS OF ASSIGNMENT.)

Ship's Name *"ENGLISHMAN"*Port of Survey *Hull*Official Number *165680*Surveyor's Signature *J. Mace*Nationality and Port of Registry *British*Date of Survey *While Building*

Disposition and dimensions of superstructures, trunks, deckhouses and machinery casings to be inserted in the diagrams and tabular statement:—



Particulars of Superstructures, Trunks, Casings, Deckhouses.

	Coaming	Plating	Stiffeners	Spacing	End Attachments of Stiffeners	Size of Openings	Height of Sills	Height of Casings
Poop Bulkhead ...	✓							
Raised Quarter Deck Bulkhead ...	✓							
Bridge, After Bulkhead ...	✓							
Bridge, Forward Bulkhead ...	✓							
Forecastle Bulkhead ...	25	25	3" x 3" x 375"	30"	none	none	✓	3'-3"
Trunk, Aft ...	✓							
Trunk, Forward ...	✓							
Exposed Machinery Casings on Freeboard or Raised Quarter Decks ...	31	25	5" x 3" x 30"	26	Plts at 10"	4'-3" x 21"	27 + 24	3'-0"
Exposed Machinery Casings on Superstructure Decks (Boiler casing) ...	✓ 31	25	3 1/2" x 2 1/2" x 34"	28	"	3'-8" x 21"	24	6'-6" above Raised Steel deck
Machinery Casings within Superstructures not fitted with Class I Closing Appliances ...	✓		6" x 3" x 40"			3'-9" x 1'-9"		
	✓		3" x 3" x 375"					
Deckhouses on Flush Deck Ships ...	✓	✓	✓	✓	✓	✓	✓	✓

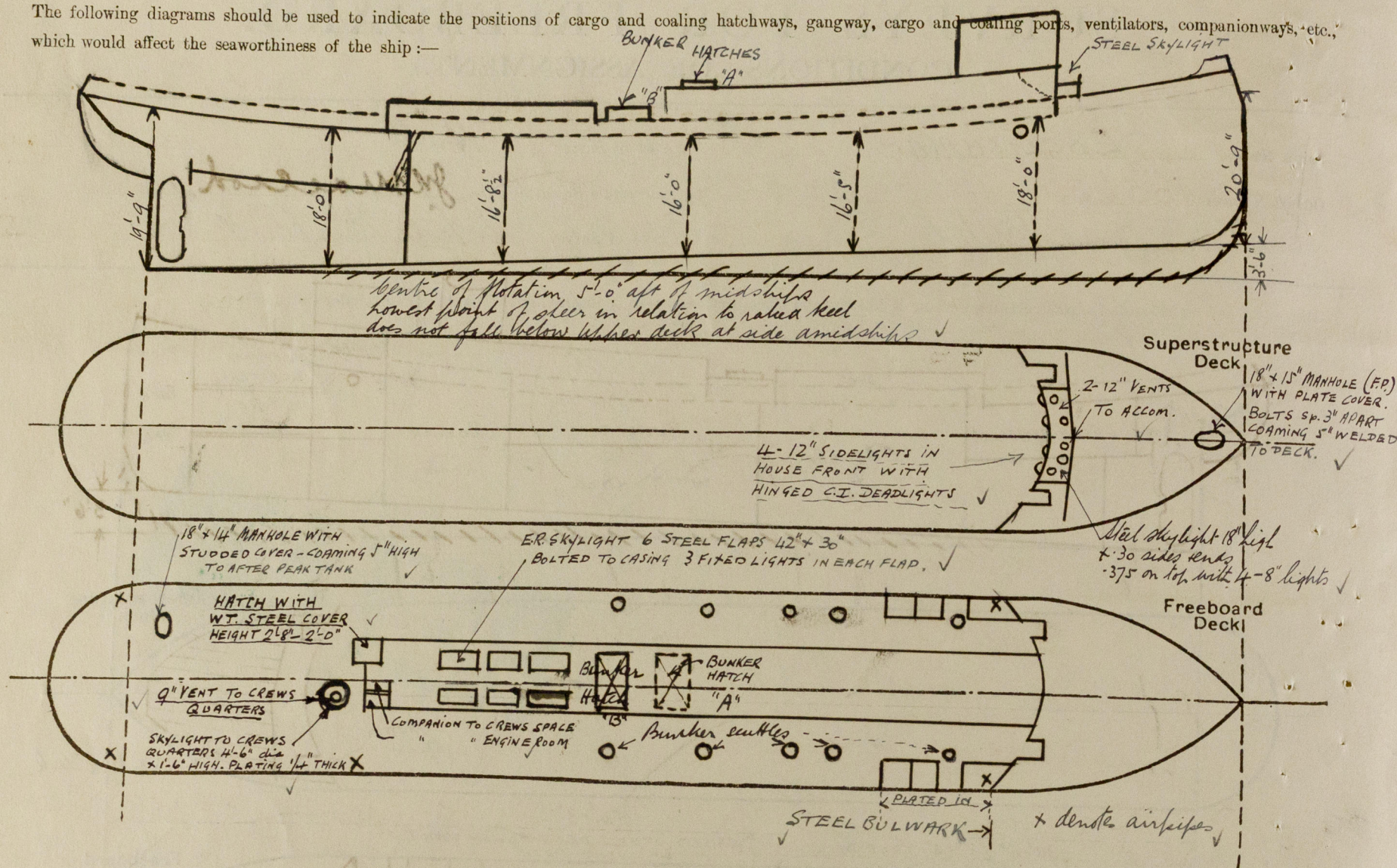
Particulars of Closing Appliances (state if capable of being manipulated from both sides).

Poop Bulkhead ...	✓
Raised Quarter Deck Bulkhead ...	✓
Bridge, After Bulkhead ...	✓
Bridge, Forward Bulkhead ...	✓
Forecastle Bulkhead ...	✓
Exposed Machinery Casings on Freeboard or Raised Quarter Decks ...	✓
Exposed Machinery Casings on Superstructure Decks ...	✓
Machinery Casings within Superstructures not fitted with Class I Closing Appliances ...	✓
Deckhouses on Flush Deck Ships ...	✓

No openings.
1 teak door (p+s) to Captain's cabin, 1 teak door to Engine room, also crew space with spring locks. Other doors of steel (hinged) and capable of manipulation from both sides.

PARTICULARS OF PROTECTION TO OPENINGS, ETC.

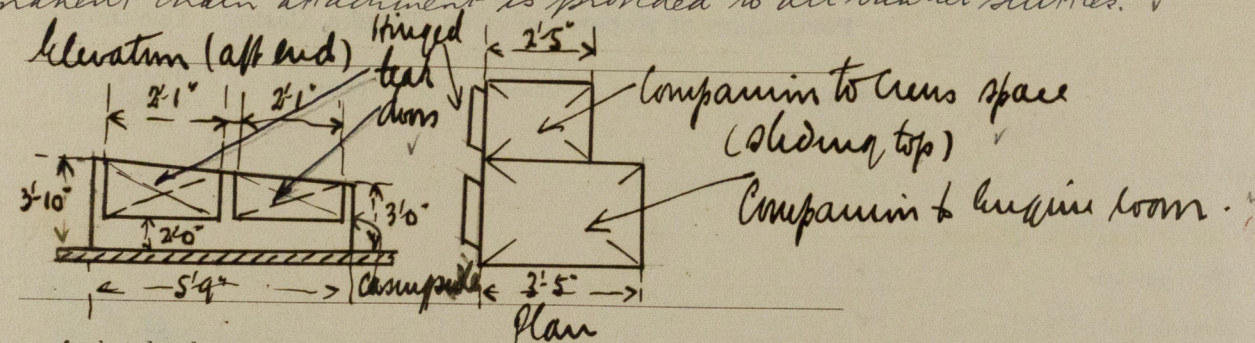
The following diagrams should be used to indicate the positions of cargo and coaling hatchways, gangway, cargo and coaling ports, ventilators, companionways, etc., which would affect the seaworthiness of the ship:—



Particulars of fidley, funnel and ventilator coamings, engine room skylight and other openings in machinery casing tops and their means of closing:—
 Funnel 7 ft dia \times 3/16" thick. 2 Stobchola vents 24" dia \times 12 gauge. — 8' 3" to bottom of end.
 1 Diddle, opening 4' 4 1/2" \times 2' 9 1/4" fitted with hinged steel cover.
 "A" Bunker hatch on casing top 11' 0" \times 8' 6" — 6' 3" \times 405 Coaming. 1 web beam on centre line 7/16"
 12 1/2" \times 50 plate — 3' \times 3' \times 50 mounting angles. — 2 — 3 \times 1 1/2 half round bars at bottom. Hatch covers 3" WP 3' 3/4" \times 50
 "B" Bunker hatch — 12' 0" \times 4' 9" — 6' 3" \times 405 Coaming. Hatch covers 3" W.P. with 3' 3" rest bars.
 Bunker hatches fitted with cleats, batten, and 2 tarpaulins to be supplied to each hatch.

Particulars of Flush Bunker Scuttles:— 5 Cast iron flush bunker scuttles (p+s) fitted with screw joints.
 4 at 24" dia (p+s) and 1 (p+s) at 20" dia.
 Permanent chain attachment is provided to all bunker scuttles.

Particulars of Companionways:—



Particulars of Ventilators in exposed positions on freeboard and superstructure decks:—

2- 12" Vents to accommodation at fore end. Coaming 34" \times 36" high.
 1- 9" vent to crew's quarters aft. " 32" \times 18" "
 3 loosened vents to crew's quarters & hold. 5" dia \times 36" high.
 Wood plugs & canvas covers to be fitted.

Particulars of Air Pipes in exposed positions on freeboard, raised quarter, or superstructure decks:—

1- 2 1/2" dia air pipe (p+s) to after peak tank — height 2' 9" to mouth of pipe.
 1- 2 1/2" " " to fore peak tank — height to bow chock.
 1- 2" " air & filling pipe (p+s) to forward fresh water tank — height 24" (inside house)
 1- 2" " " " to fresh water tank in engine room — height 29"
 Wood plugs to be fitted.

Particulars of Gangway Cargo and Coaling Ports:—

none ✓

Particulars of Scuppers and Sanitary Discharge Pipes:—

Scuppers from Upper Deck. 5 off (p+s) 9" \times 3/4" cut thro' bulwark foundation angle.

Discharge W.B. discharge (2 S.S. and 1 on p.s.) discharging thro' 4" non return storm valve 10 1/2" below upper deck.

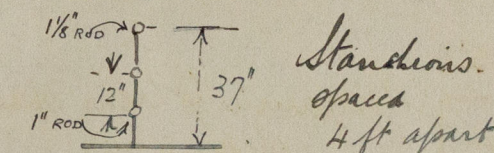
One bath discharge (p.s.) on upper deck discharging thro' 1 1/2" non return storm valve 10 1/2" below deck.

Particulars of Side Scuttles:—

1 Sidelight (p+s) to accommodation 8" dia. of substantial construction and fitted with hinged C.I. deadlight.

Vertical distance of Sill of lowest Side Scuttle above top of keel 15' 9" ✓

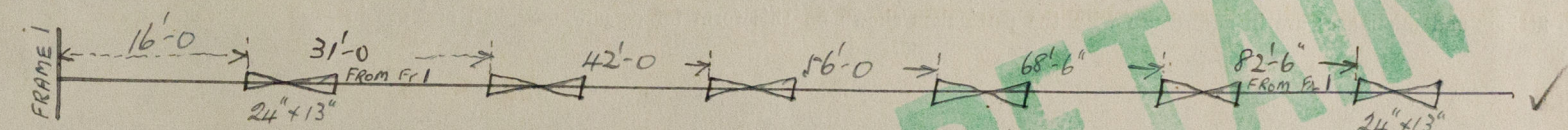
Particulars of Guard Rails:— F'de DECK



An efficient steel bulwark is fitted on upper deck extending from after end of forecabin to stern. Vessel plated in at sides in way of forward side houses

Particulars of Gangways, Lifelines, etc.:—

Position of freeing ports



Particulars of Freeing Arrangements.

	Length of Bulwark	Height of Bulwark	Size of Freeing Ports	Number each side	Area each side	Rule area each side
After Well ...	102' 0"	3' 3"	24" \times 13"	6	13.00 \checkmark	18.9
Forward Well ...						

State position of each freeing port ... After Well:— FOR POSITION SEE SKETCH ABOVE

(F. and A. position and height above deck edge) Forward Well:— HEIGHT ABOVE DECK 4"

State whether the freeing ports are fitted with shutters, bars, or rails, and give particulars of such:— Freeing ports fitted with 2 bars across

Additional area where sheer is less than standard.

PARTICULARS OF PROTECTION TO OPENINGS, ETC.

HATCHWAYS ON FREEBOARD AND SUPERSTRUCTURE DECKS.											
Description of Hatchway											
Dimensions of Hatchway											
COAMINGS	{	Height above Deck ...									
		Thickness ...									
		Sides ...									
		Ends ...									
		Stiffeners ...									
		Brackets, Stays ...									
HATCH BEAMS	{	Number									
		Spacing									
		Scantling and Sketch ...									
		Bearing Surface ...									
FORE AND AFTERS	{	Number									
		Spacing									
		Unsupported Lengths ...									
		Scantling* and Sketch ...									
		Bearing Surface ...									
HATCH COVERS	{	Material									
		Thickness									
		How fitted (modified) ...									
		Bearing Surface ...									
Spacing of Cleats											
Number of Tarpaulins											
<div>*Are wood fore and afters steel shod at all bearing surfaces ?</div> <div>Are battens and wedges efficient and in good condition ?</div> <div>Are tarpaulins in good condition and in accordance with rule requirements ?</div> <div>Are lashings provided in accordance with rule requirements ?</div>											

Particulars of any special features :—

Endorsement at first survey and at surveys for renewal of Certificate :—

The fittings and appliances are in accordance with the particulars shown on this form (or as now modified) and are in good condition.

