

SUNDERLAND

DECK PLANS

S.S. N 277.

(AS BUILT)

SIR J PRIESTMAN'S

S.S. "Frances Massey"

SUNDERLAND DET. NO. 29514.

RETAIN



© 2019

Lloyd's Register

W395-0063 Foundation



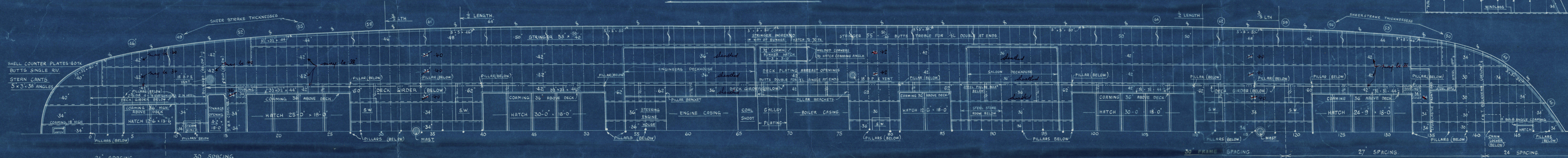
Copy  
Lloyds Register  
8/12/26

# DECK PLANS No 277.

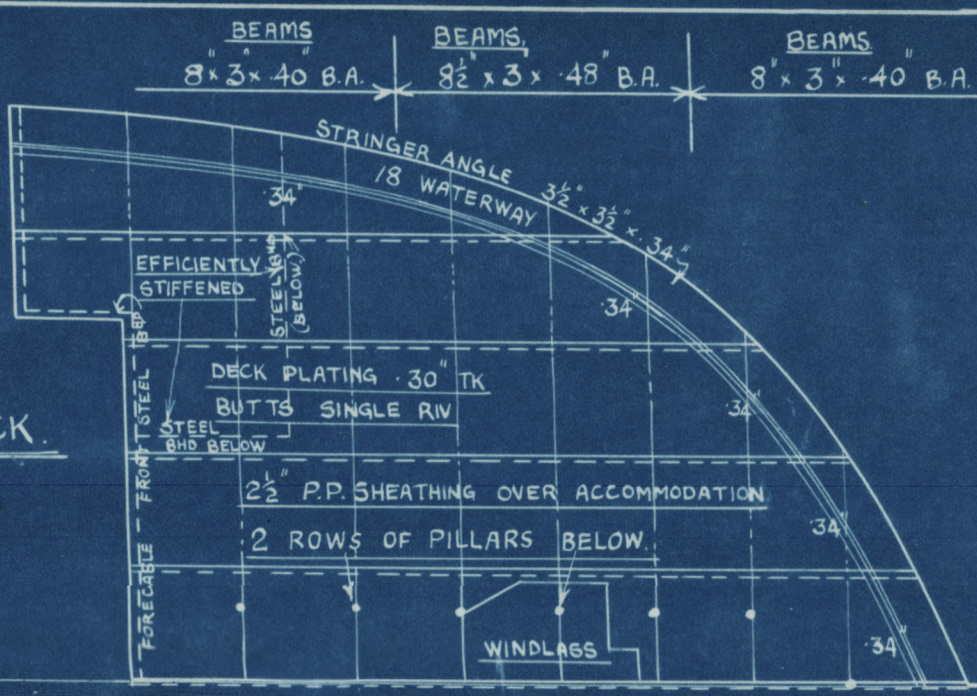
SCALE  $\frac{1}{8}$ " = ONE FOOT.

NOTE: HATCH CORNER PLATES THICKENED (EXCEPT AT ENDS)  
IN LIEU OF DOUBLINGS.

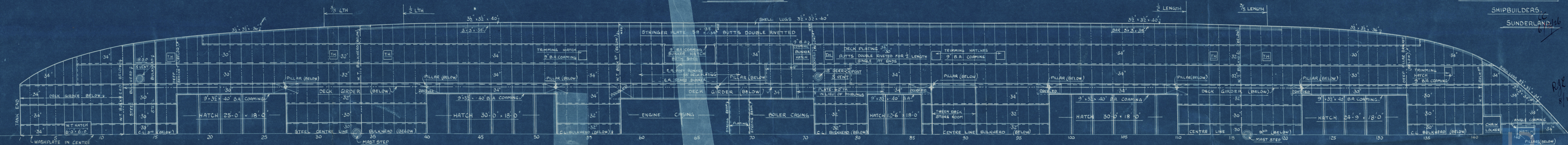
## COMPLETE SUPERSTRUCTURE DECK.



## FORECASTLE DECK.



## SECOND DECK.



SIR JOHN PRIESTMAN & CO.  
SHIPBUILDERS.  
SUNDERLAND.

RJEW  
8/12/26

W395-0063