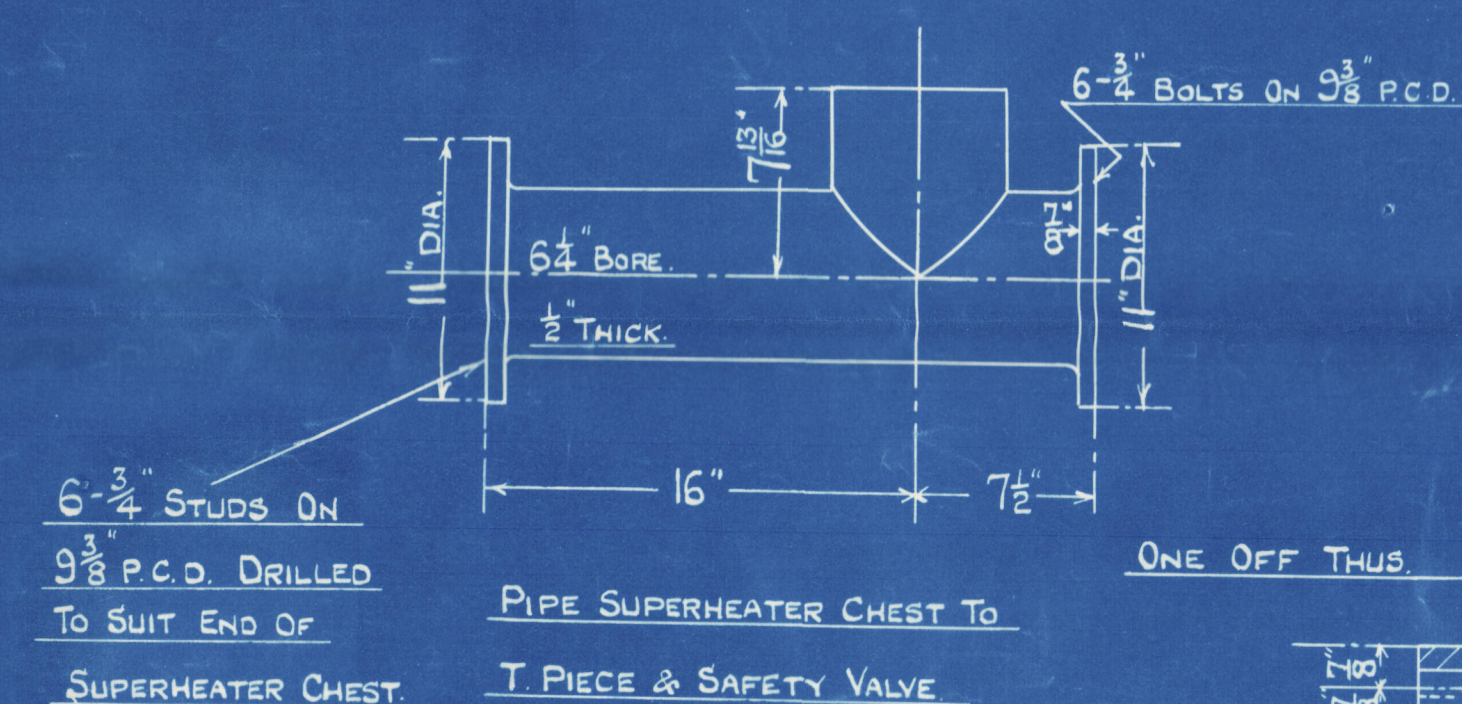
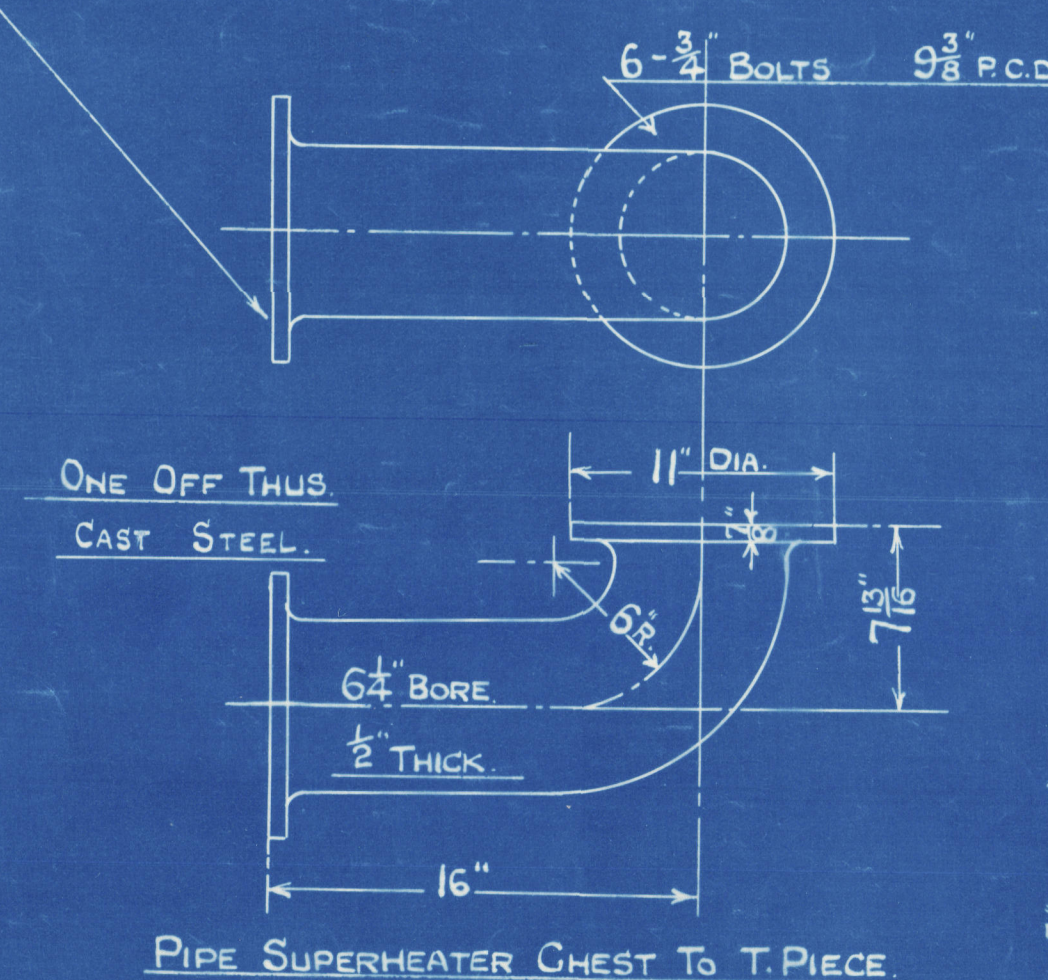


Nº 335

ONE OFF AS DRAWN
ONE OFF TO OPP. HAND.
STEEL PLATES.

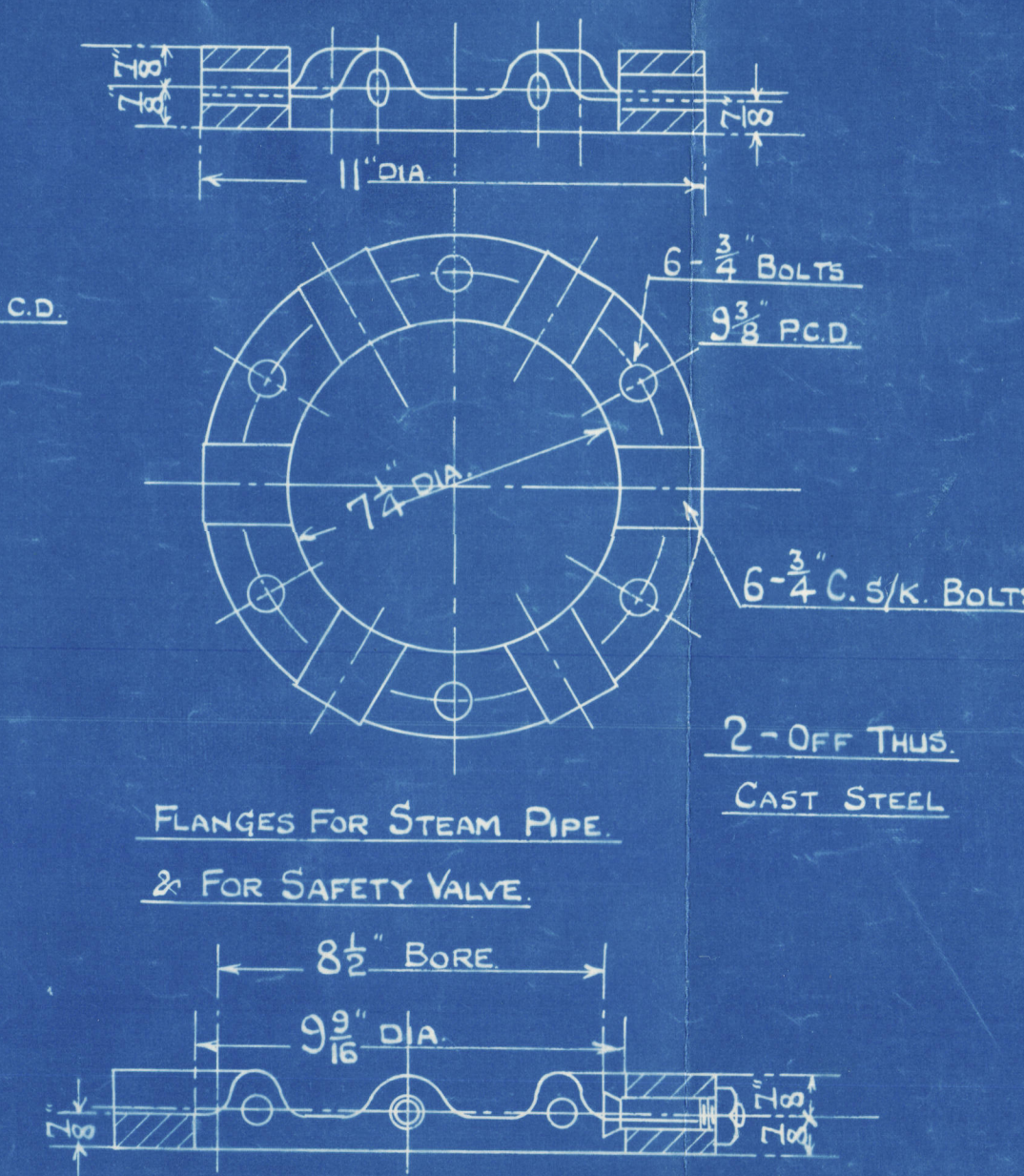


ONE OFF THUS. CAST STEEL



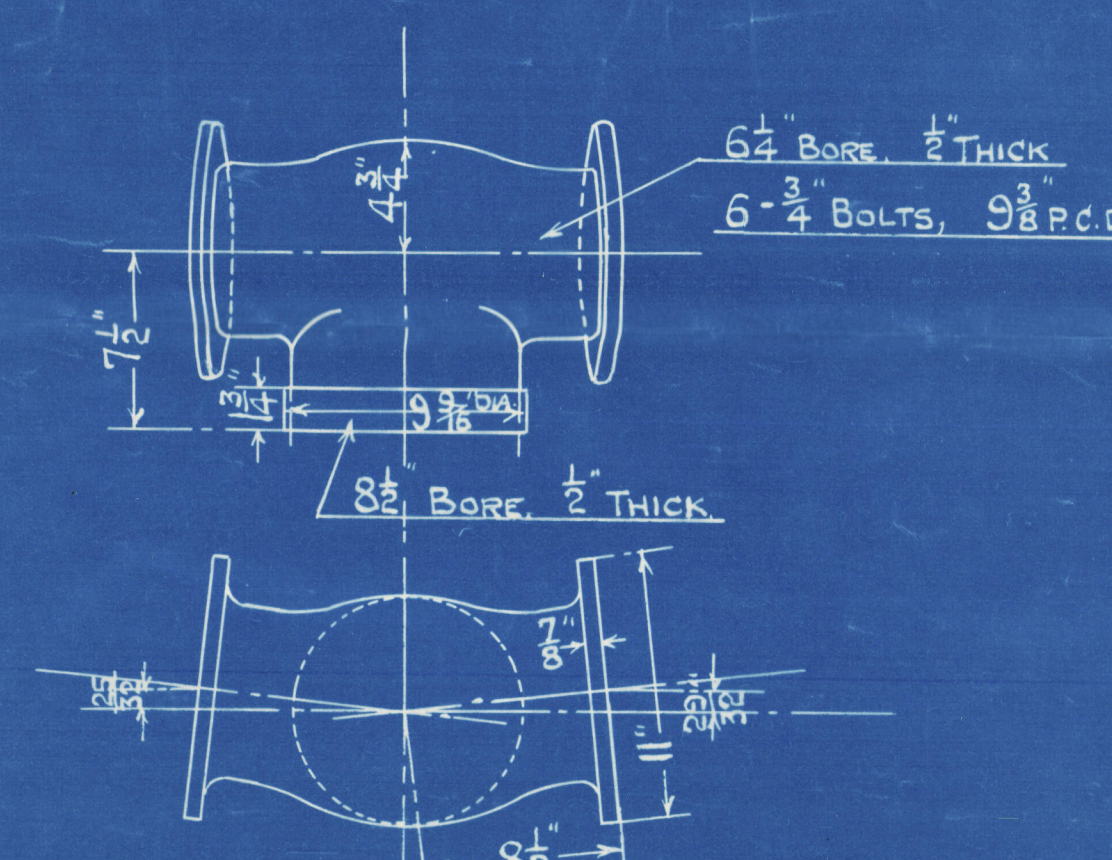
ONE OFF THU
CAST STEEL

PIPE SUPERHEATER CHEST TO T. PIECE

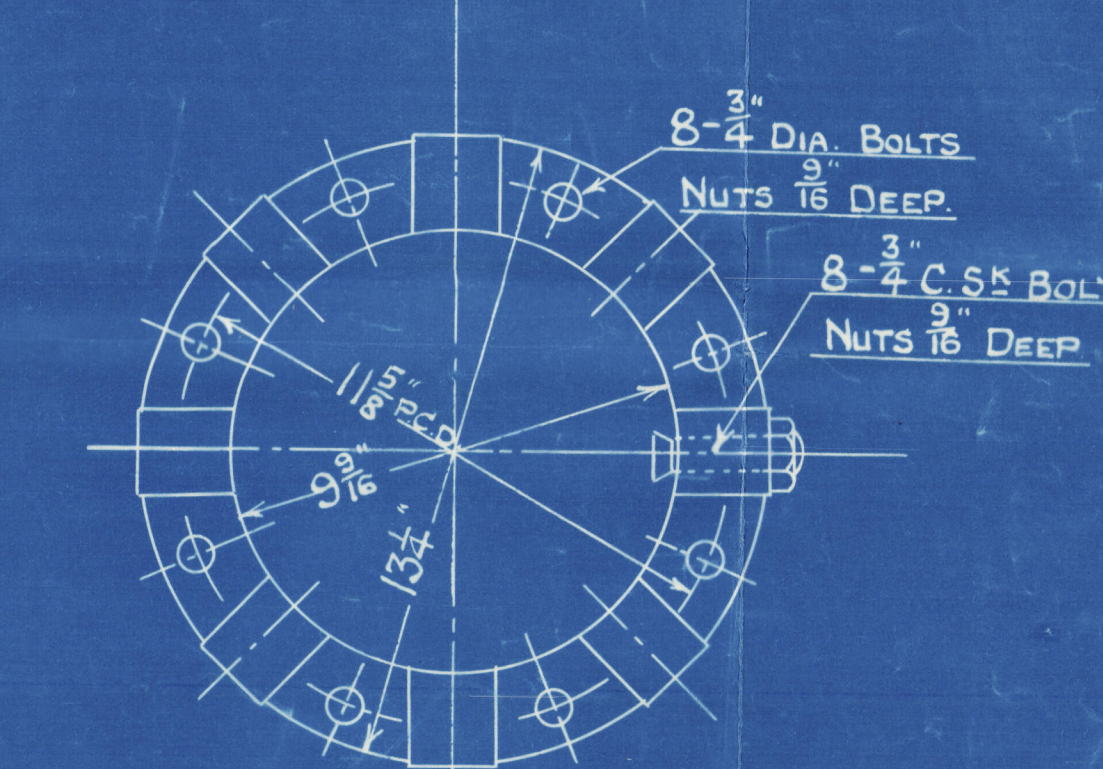


FLANGES FOR STEAM PIPE
& FOR SAFETY VALVE.

2 - OFF THUS
CAST STEEL



T. PIECE ONE OFF
CAST STEEL.



FLANGES FOR MAIN STOP VALVE & T PIECE
2" OFF THUS.
CAST STEEL

DRAWN BY					
PASSED BY					
CHECKED BY				DATE	

~~S.O. 88/27/D.O. 32 A.~~

530/D162 $\frac{5}{5}$

530 / 19 1652

John Brown & Co. Ltd.,

No. 530.

"Johnson" Boiler - Ex Blr. No. S. O. 88/24.

W. T. Boilers - Superheater Chest
in Steam Drum.
Sheet No. II.

"Empress of Britain".

GLASGOW REPORT No. 51410

BOX NO.

6

PLAN NO.

64

RETAIN