

Telephones: Central 9280 (18 lines)

Telex: Central 8215

Telegrams: "Colvillett, Glasgow"

WORKS:

DALZELL STEEL WORKS, Motherwell.  
CLYDEBRIDGE STEEL WORKS, Cambuslang.  
GLENGARNOCK IRON & STEEL WORKS, Glangarnock  
CLYDE IRON WORKS, Tolleross, Glasgow, E.2.  
MOSSEND WORKS, Bellshill.

# COLVILLES LTD.,

195 WEST GEORGE STREET,  
GLASGOW, C.2.

All Steel tested before leaving the Works

CODES USED  
A.B.C. 5th & 6th Editions.  
Bentley's Phrase, 1st.  
2nd.  
Lieber's 5 Letter.  
Western Union.  
5 Letter.  
Engineering.  
Marconi International.  
Acme Selwyn's.  
Universal Trade, Etc.

**K.**  
Boiler Steel Plates Branded



Ship Steel Sections Branded



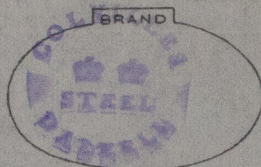
**BRITISH-| STEEL**

LONDON OFFICE:  
6 Spring Gardens.  
Cockspur Street, S.W.1.

5th October, 1939

SOLD TO Messrs. Cochran & Co., Annan, Ltd., ANNAN.

PRIORITY  
GRADE 6.



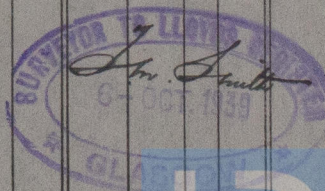
WAGON NO: \_\_\_\_\_ Carriage: \_\_\_\_\_

Tests: **LLOYDS.**

W.O. 729

To: **Howdie Siding, ANNAN.**

DATE AND No. OF ORDER	MARKS	NO. OFF	DIMENSIONS	TONS CWT. Q. LBS.	TONS CWT. Q. LBS.	TONS CWT. Q. LBS.	TONS CWT. Q. LBS.	RATE	£	S.	D.
13.9.39 8600/PB9/ 248	8600/ 14518		<b>STEEL BOILER PLATES.</b>								
			5 5'7.1/4 47.3/4 Sk.	19/32	GAM.	9508 ✓	26/30 ✓	8239	4/75 ✓	5	
			1 10.1 Dia. 23/32	1 2	8	9148 ✓			5/70 ✓	1	
										6	



© 2020

Lloyd's Register  
Foundation

W 39-0230

D.L.