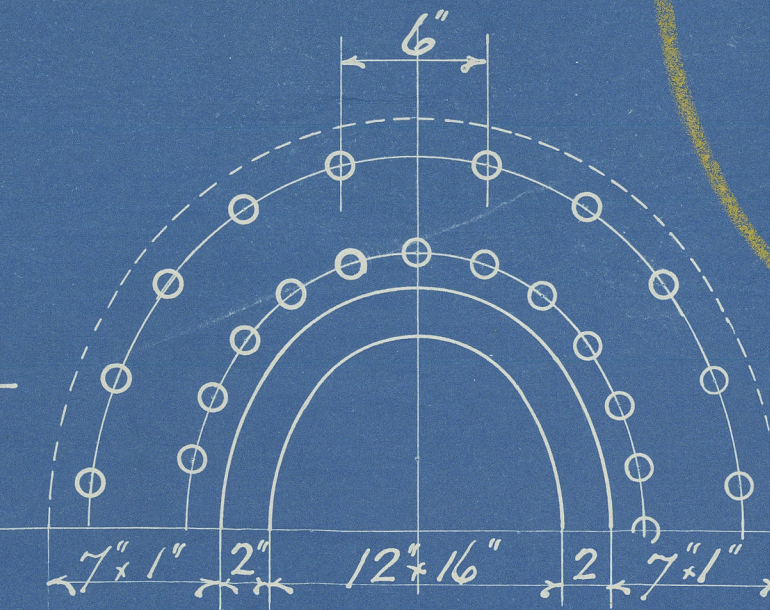


Specification of Materials.

Shell and Buttstraps	29-33 Tons.
Girders and Longitudinal Stays	28-32 "
Other plates, Screenstays and Rivets	26-30 "

Manhole Ring Riveting.
44 Holes $\frac{1}{16}$ " diam. about $2\frac{1}{2}$ "
pitch in inner row.



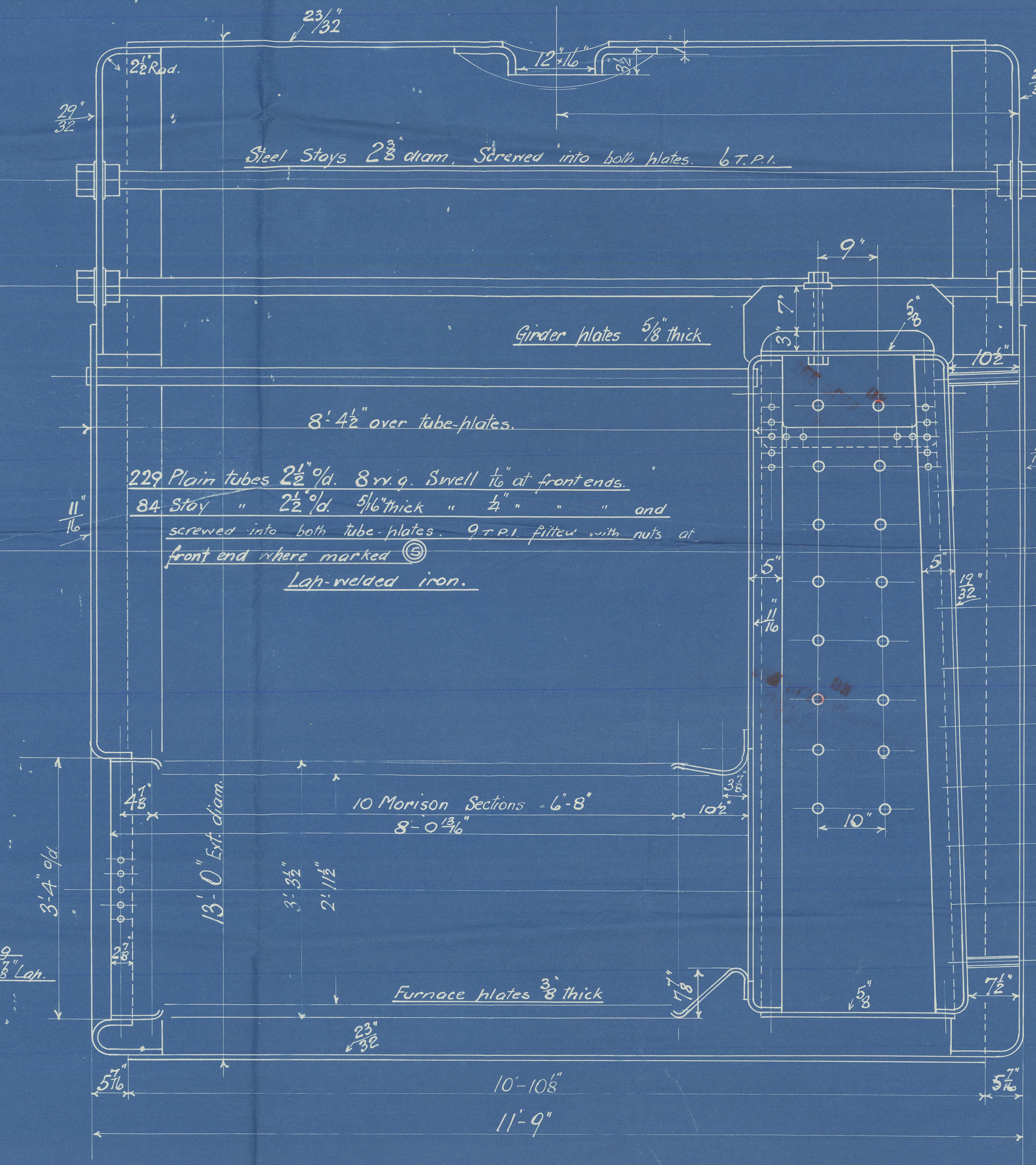
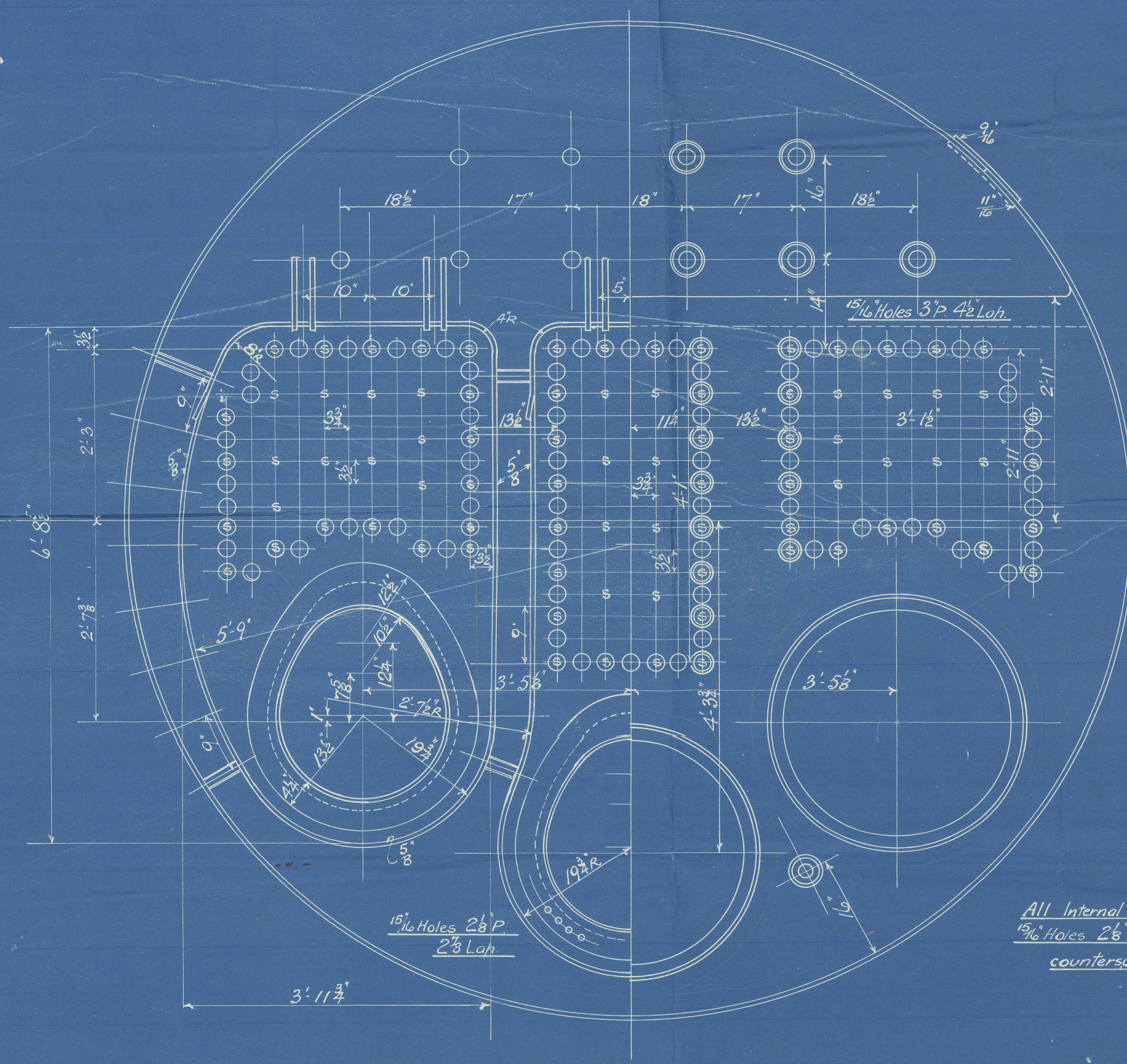
Shell Plate 10'-10 3/8" wide.
Holes $\frac{1}{16}$ " diam 19 Pitches 9'-4 1/8"

Plate 86-31%
Rivets 93-53%
Buttstrap Outer 9/16"
Inner 11/16"

Circum Seams $\frac{1}{16}$ " Holes $3\frac{1}{2}$ " Pitch
Plate 67% Rivets 39 9/16%

Combustion Chamber Stays.
Screwed 9 T.P.I. Notted each end.

Backs - mark	●	1 3/4" diam
"	○	1 5/8" "
"	○	1 1/2" "
Sides and Tops	○	1 1/2" "



Heating Surface	Tubes	1690 sq'
"	Plates	519 sq'
"	Total	2209 sq'

BOILER 13'-0" EXT. DIA. x 11'-9" LONG. 120 LBS. W.P.

LLOYDS SURVEY.

6384

SCALE - 1" = 1 FOOT.

DRG. No. 725

Handwritten signatures and stamps, including 'CANCELLED' and 'COPY'.

© 2020
DRAWN BY: GWR
DATE: 11/11/39
TRACED BY:
DATE:

STOCKTON CHEMICAL ENGINEERS &

RILEY BOILERS LTD

CANCELLED
SEE PLAN APPROVED
23.11.39
BOILER No. 6384

W.P. 120 LBS D

FOR DOXFORD'S CONTRACT No. 664

Boiler

"FULTALA"

Sld 32996

CANCELLED
SEE PLAN APPROVED
23.11.39
155
34

WB9-0213



© 2020

Lloyd's Register
Foundation