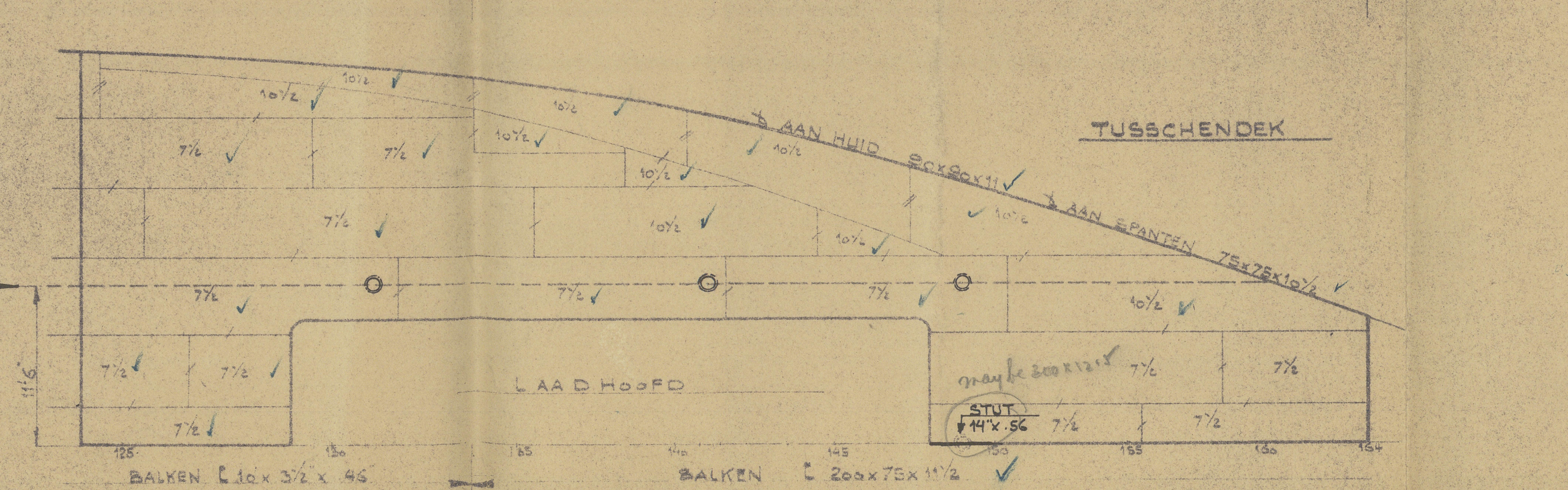
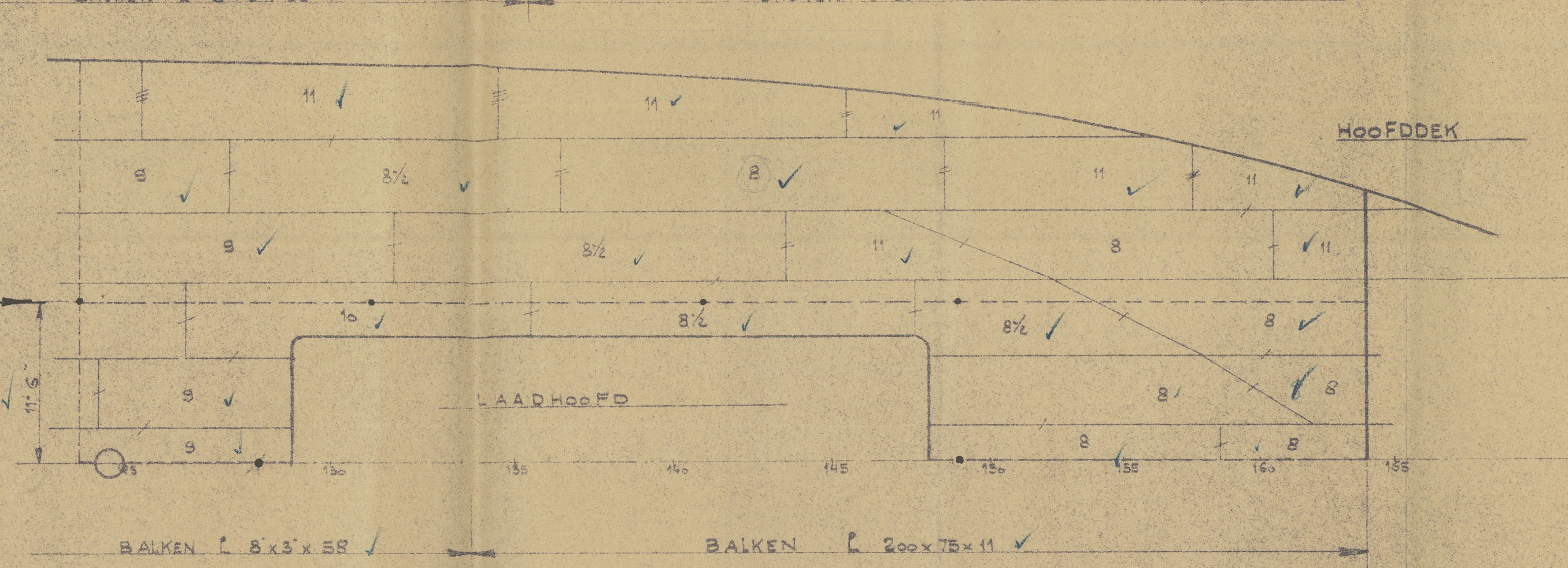
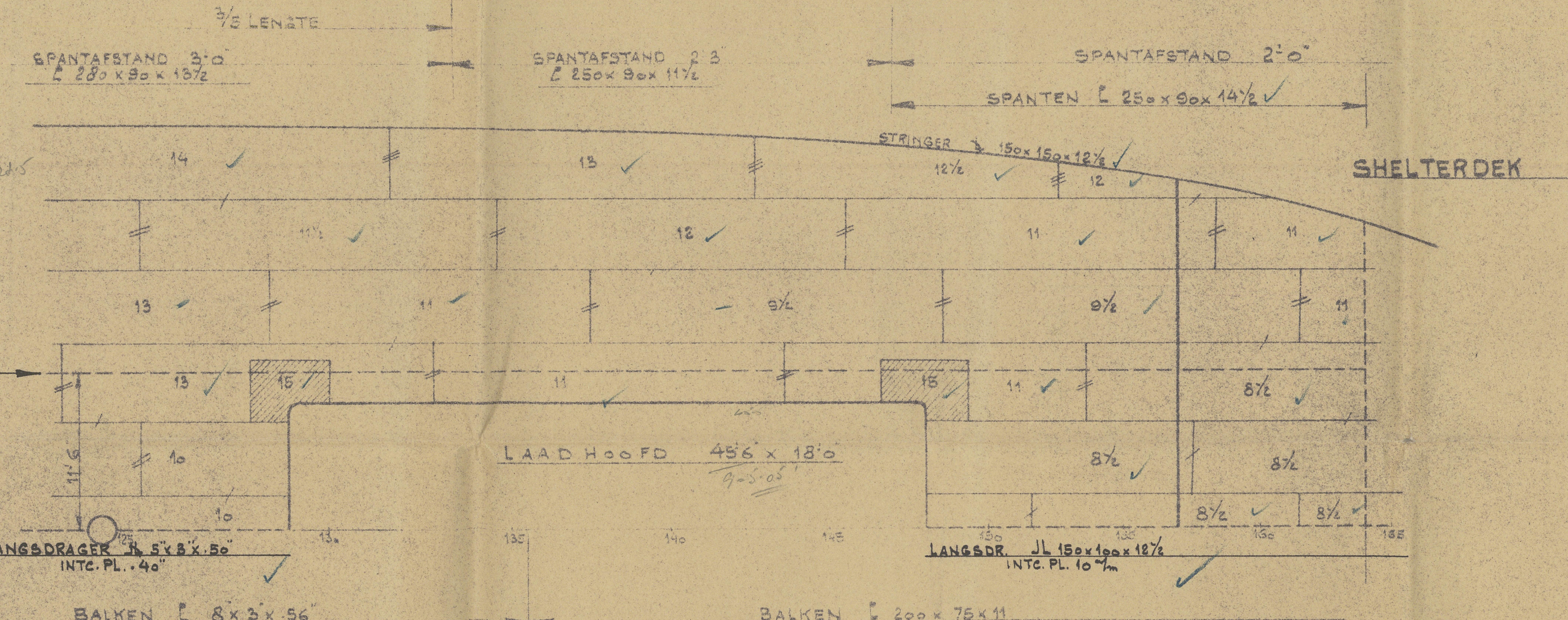
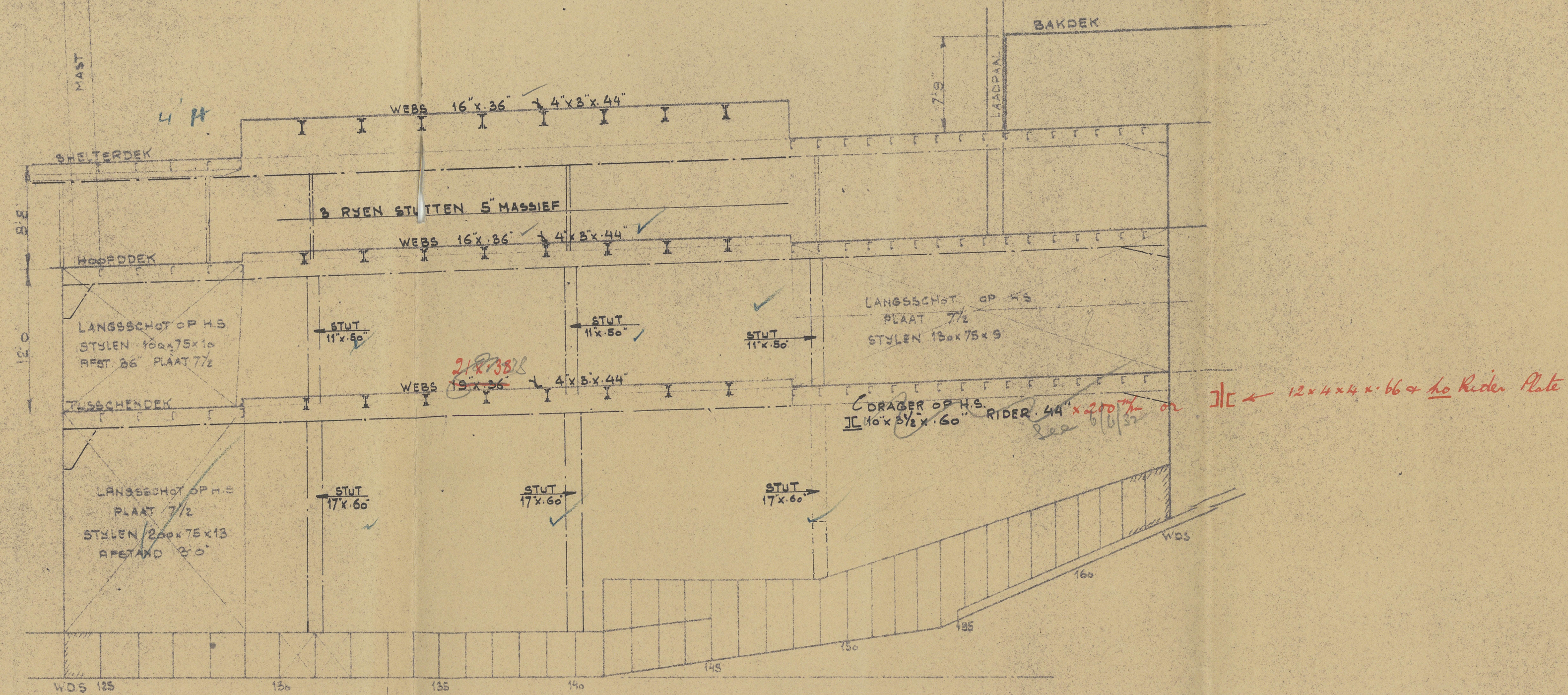


Office



S.S. "GAASTERKERK" & "GROOTE KERK"

— HOOFDAFMETINGEN —

LENGTE TUSCHEN L.L.	145.90 m = 478' 8"
BREEDTE OP BUITENKANT SPANTEN	17.68 " = 58' 0"
HOLTE TOT SHELTERDEK	12.19 " = 40' 0"
" TOT HOOFDEK	9.55 " = 31' 4"

? Panting Stingers
Bth Stungting
Panting Stingers to be fitted
as per Profile Plan approved 2/10/52

8.6.52

"WILTON-FUJENOORD" ROTTERDAM.				AFD: HANDELSVAARTUIGEN				TOTAAL GEWICHT	
SCHAAL 1:36				RUW BEWERKEN				GEHEEL BEWERKEN	
OPDR. NO.	GROEP	TEEK. NO.	AANTAL BLADEN	MAAT	WATE				
629/21	—	28	1	1	—				
VERGROOT LAADHOOFD									
(VOORSTEL N° 1)									
<div> <div>GET.</div> <div>GEZ.</div> <div>GEZ.</div> <div>GEZ.</div> <div>GEZ.</div> </div>						<div> <div>WJZIGINGEN</div> <div>BLAD NO.</div> <div>Lloyd's Register Foundation</div> <div>304022</div> <div>W39-0119</div> </div>			

© 2020

S.S. Gaasterkerk.

Rot. rept. No. 21451

S.S. 'Rooskerk'.

PANTING STRINGERS BT17. STRENGTHENING

W39-0119



© 2020

Lloyd's Register
Foundation