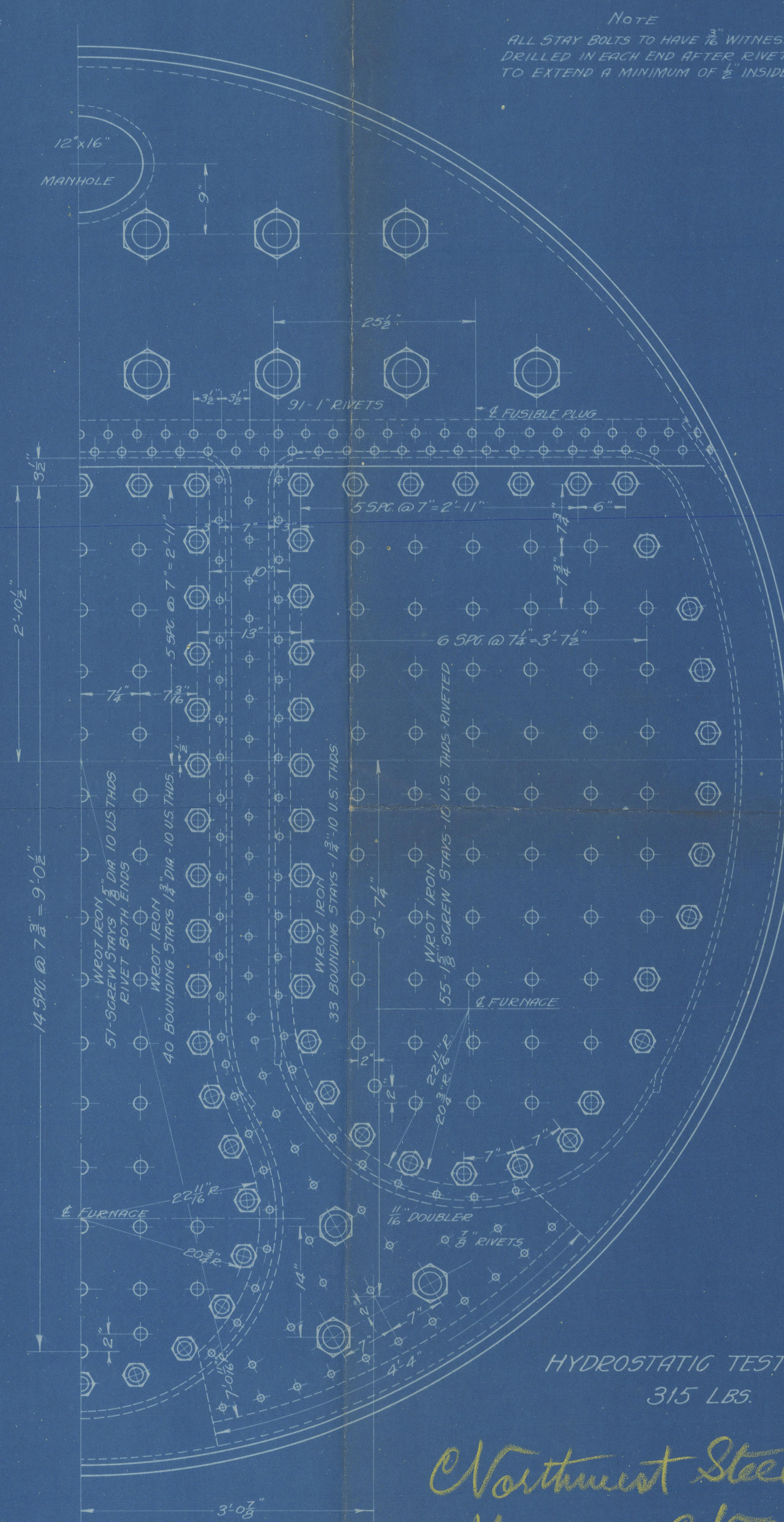
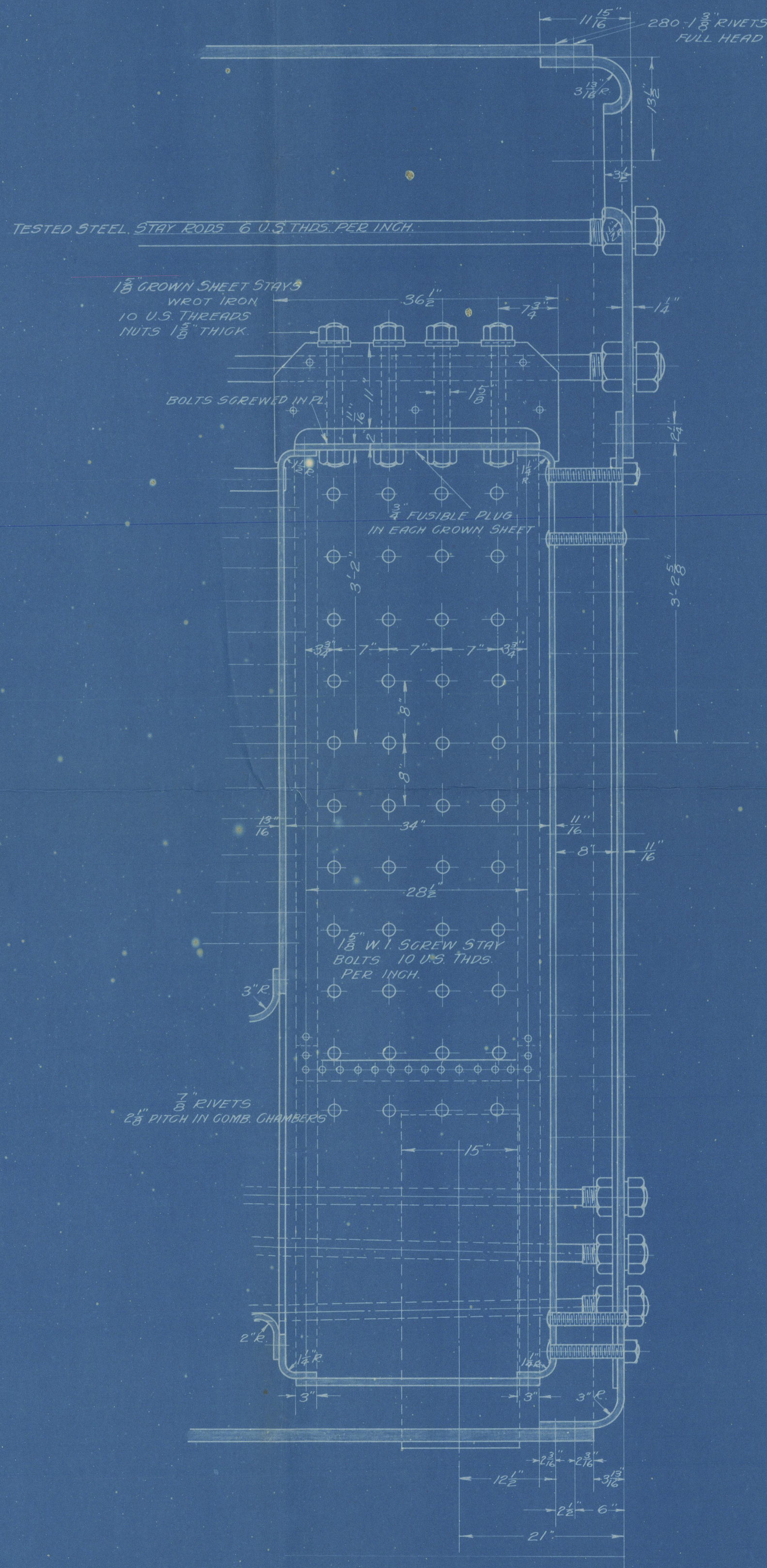


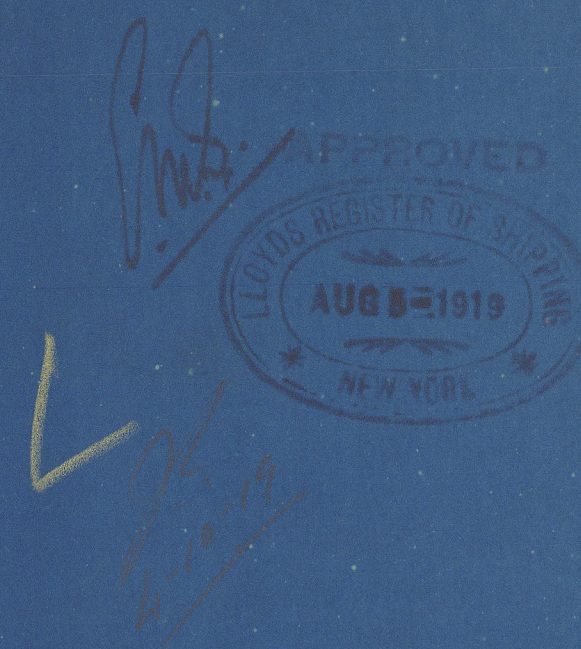
ALTERATIONS	MADE BY	DATE	APPROVED



NOTE
ALL STAY BOLTS TO HAVE 3/16" WITNESS HOLE
DRILLED IN EACH END AFTER RIVETING HOLE
TO EXTEND A MINIMUM OF 1/2" INSIDE OF PLATE

HYDROSTATIC TEST PRESSURE
315 LBS.

Northwest Steel Co's
Hull No 35
Empire Marine
Plat 545



RETAIN

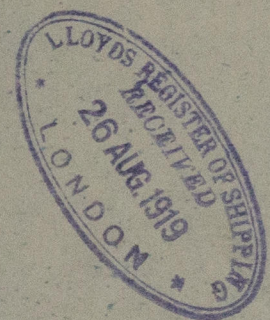
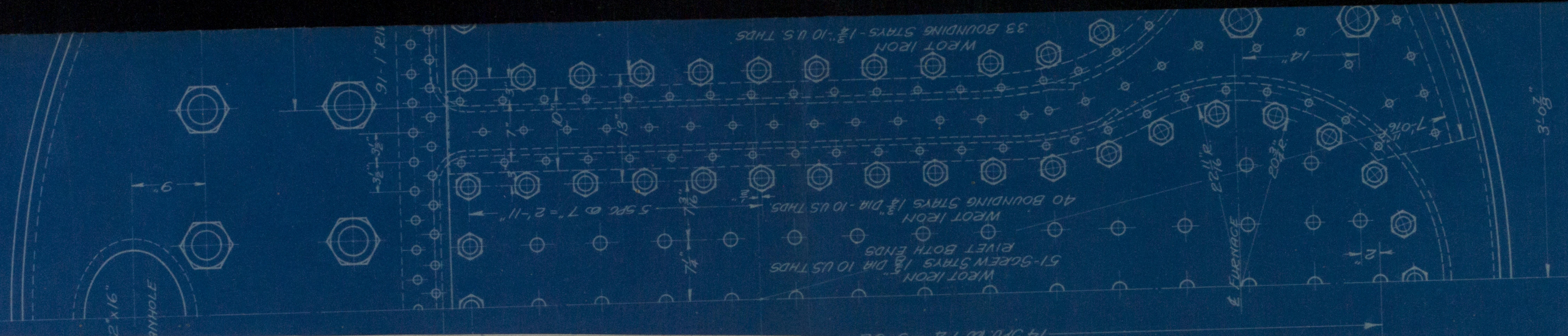
"West Coast"
Plat 355

NOTE - FOR COMPLETE BOILER SEE DWG. E-616-04.

7-28-19	CONSTRUCTED FOR DATE	COLUMBIA RIVER SHIPBUILDING CORP. PORTLAND, ORE.
204	DATE	SCOTCH MARINE BOILER 14'-9" DIA 11'-0" LONG - 210* WORKING PRESSURE
	APPR.	DRAWN - E.J.F. CHECKED - G.H. TERCED - A.W.M. DATE 7-28-19 SCALE 1" = 1 FT.
		DRWG. NO. E-874-052



Lloyd's Register
Foundation



W 388 - 0254

PRINT MADE
JUL 26 1919
Columbia River Shipbuilding Co. Astoria, Ore.



© 2020

Lloyd's Register
Foundation

W 388 - 0254