

# Lloyd's Register of Shipping.

## SURVEYS FOR FREEBOARD.

(CONDITIONS OF ASSIGNMENT.)

 Index No. **27335**  
 (For London Office only).

AUG 18 1940

Ship's Name "Empire Minerva" ex "West Cobalt"

Port of Survey Manchester

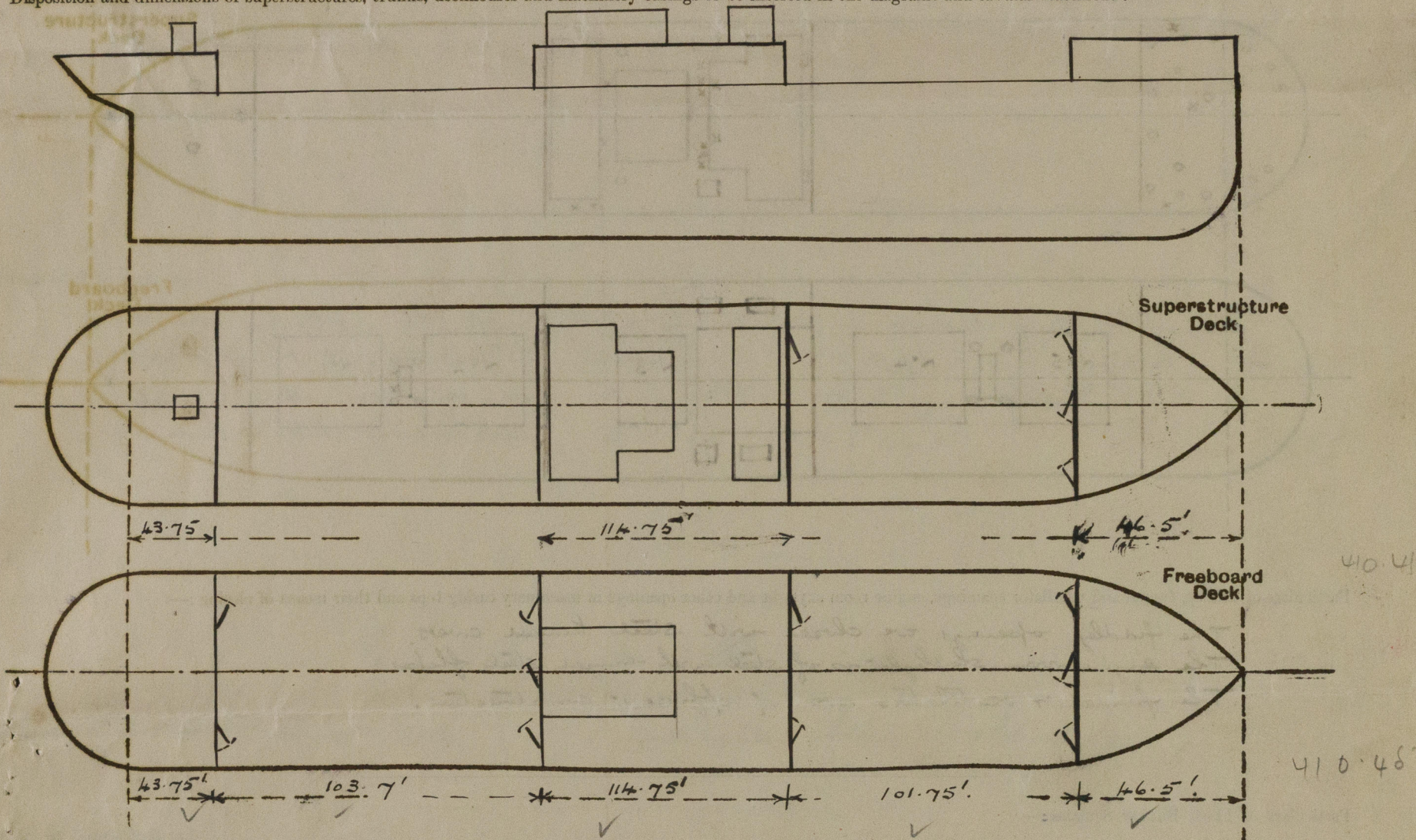
Official Number

Surveyor's Signature Harry S. Newton

Nationality and Port of Registry

Date of Survey Aug 10th, 12th, & 14th. 1940

Disposition and dimensions of superstructures, trunks, deckhouses and machinery casings to be inserted in the diagrams and tabular statement: --



Particulars of Superstructures, Trunks, Casings, Deckhouses.

	Coaming	Plating	Stiffeners	Spacing	End Attachments of Stiffeners	Size of Openings	Height of Sills	Height of Casings
Poop Bulkhead ...	18 1/2" x 4 1/2"	4 1/2"	4" x 3" x 40" OA	30"	Revel to boundary angle tops & bottom	2 @ 5'-0" x 2'-6"	18 1/2"	8'-6"
Raised Quarter Deck Bulkhead ...								
Bridge, After Bulkhead ...	21" x 50"	40"	6" x 3 1/2" x 40" OA	30"	Revel to boundary angle tops & bottom	2 @ 5'-5" x 4'-7" 1 @ 5'-0" x 3'-0"	21"	8'-6"
Bridge, Forward Bulkhead ...	21" x 50"	50"	8" x 3 1/2" x 46"	36"	Bracketed tops & bottom	2 @ 5'-5" x 4'-7"	21"	8'-6"
Forecastle Bulkhead ...	18" x 40"	40"	6" x 3 1/2" x 40"	34"	Revel to boundary angle tops & bottom	2 @ 5'-0" x 2'-0" 1 @ 5'-0" x 2'-6"	18"	8'-6"
Trunk, Aft ...								
Trunk, Forward ...								
Exposed Machinery Casings on Freeboard or Raised Quarter Decks ...	19" x 4 1/2"	38"	4" x 3" x 38" OA	30"	Nrl.	2 @ 5'-0" x 2'-0"	19"	8'-6"
Exposed Machinery Casings on Superstructure Decks ...		None						
Machinery Casings within Superstructures not fitted with Class I Closing Appliances ...	18" x 4 1/2"	38"	4" x 3" x 38" OA	30"	Nrl.	Nrl.		8'-6"
Deckhouses on Flush Deck Ships ...								

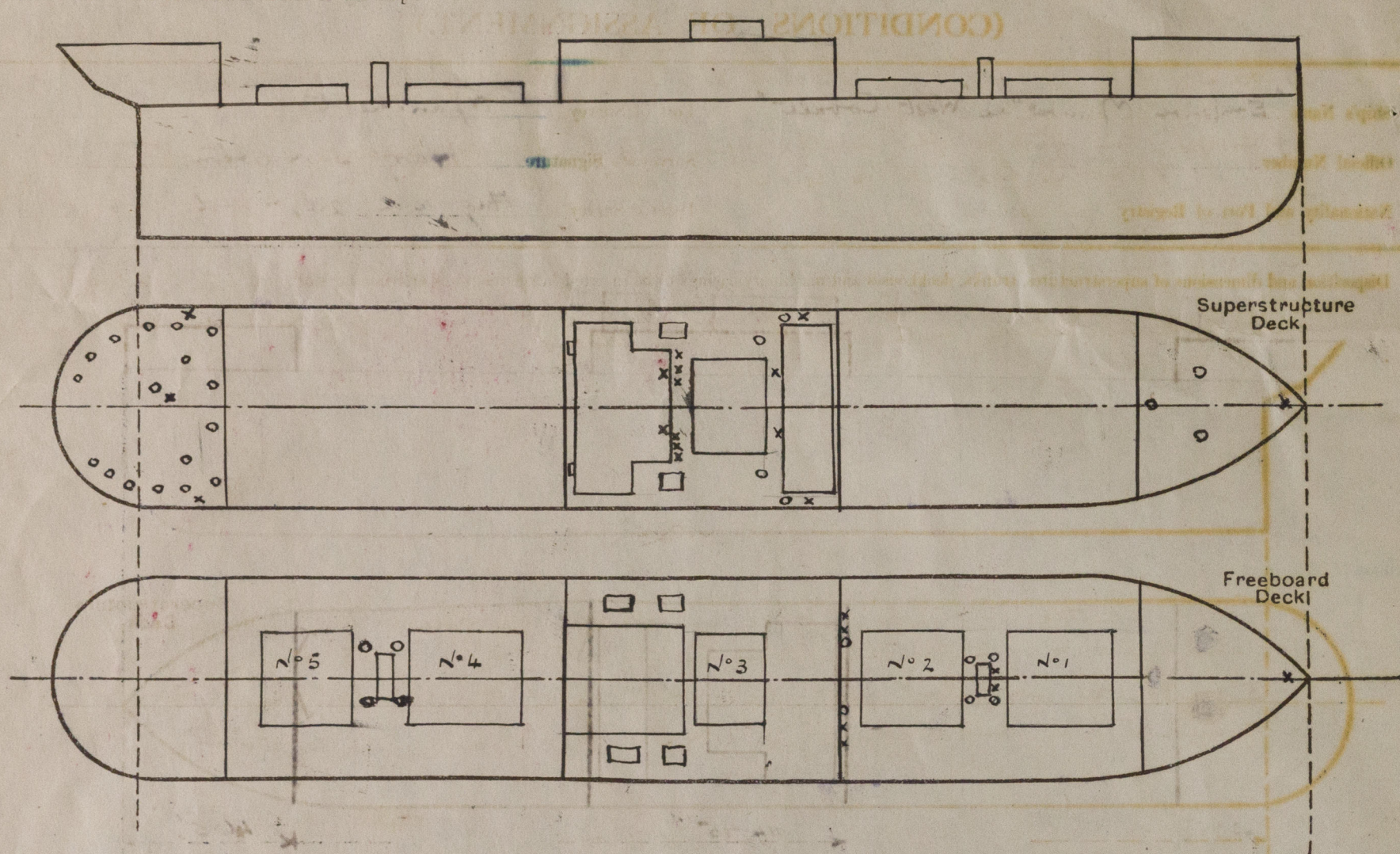
Particulars of Closing Appliances (state if capable of being manipulated from both sides).

Poop Bulkhead ...	14 finger steel doors operated from both sides.
Raised Quarter Deck Bulkhead ...	
Bridge, After Bulkhead ...	14 finger steel doors (P & S) operated from both sides with portable plate hook bolt-in: (see p. 14)
Bridge, Forward Bulkhead ...	14 finger steel doors (alt) " " " "
Forecastle Bulkhead ...	14 finger steel doors - operated from both sides.
Exposed Machinery Casings on Freeboard or Raised Quarter Decks ...	14 finger steel doors - operated from both sides.
Exposed Machinery Casings on Superstructure Decks ...	
Machinery Casings within Superstructures not fitted with Class I Closing Appliances ...	14 finger steel doors operated from both sides.
Deckhouses on Flush Deck Ships ...	No openings.



# PARTICULARS OF PROTECTION TO OPENINGS, ETC.

The following diagrams should be used to indicate the positions of cargo and coaling hatchways, gangway, cargo and coaling ports, ventilators, companionways, etc., which would affect the seaworthiness of the ship:-



Particulars of fiddle, funnel and ventilator coamings, engine room skylight and other openings in machinery casing tops and their means of closing:-

The fiddle openings are closed with steel hinged covers.  
The engine room skylight is of steel with hinged steel flaps.  
The funnel & ventilators are of efficient construction.

Particulars of Flush Bunker Scuttles:-

None.

Particulars of Companionways:-

Companionway in ports was incorporated in gun stand.  
Hinged steel door fitted. Size of opening 4'-7" x 2'-6" Sill 1'-5".

Particulars of Ventilators in exposed positions on freeboard and superstructure decks:-

**Forecastle deck.**  
2 @ 20 1/2" dia x 35" x 36" high to No 1 hold.  
1 @ 11 1/2" " x 35" x 36" " to fore space.

**Fore well (inter-deck).**  
2 @ 20 1/2" dia x 40" x 8 1/2" high to No 1 hold. \* Slays  
2 @ 20 1/2" " x 40" x 8 1/2" " No 2 " \* Slays  
2 @ 20 1/2" " x 40" x 13'-0" " No 2 " (Specially slayed to bridge front)

**Bridge deck.**  
2 @ 20 1/2" dia x 38" x 27 1/2" to No 3 hold  
2 @ 14 1/2" " x 30" x 38" to No 4 hold  
2 @ 24" x 24" timber to aft end of Bridge Deck to No 4 hold.

**After well.**  
2 @ 20 1/2" dia x 40" x 8 1/2" to No 4 hold. \* Slays  
2 @ 20 1/2" " x 40" x 8 1/2" to No 5 hold. \* Slays

Particulars of Air Pipes in exposed positions on freeboard, raised quarter, or superstructure decks:-

**Forecastle deck.** 4" dia x 30" high to fore peak.  
**Fore well.** 2 @ 5 1/2" high x 3" to No 2 O.B. tank.  
2 @ 4 1/2" " x 4" dia to No 1 O.B. tank.

**Bridge deck.**  
2 @ 30" high x 3" dia to No 3 O.B. tank  
2 @ 30" " x 4" " " deck tanks  
2 @ 30" " x 3" " " settling tanks  
2 @ 30" " x 3" " " deep tanks  
2 @ 30" " x 4" " " No 3 O.B. tank  
2 @ 5'-0" " x 4" " " No 4 O.B. tank (inside fiddle casing)

**After well.**  
2 @ 4'-0" x 3" dia to No 5 O.B. tank  
2 @ 4'-0" x 3" " " No 6 O.B. "

**Port deck.**  
1 @ 2'-0" high x 4" dia to after peak.

All ventilators supplied with work plugs & canvas covers.  
\* Specially supported & secured.

All pipes supplied with work plugs & canvas covers, or with gauges.

## Particulars of Gangway Cargo and Coaling Ports:-

Particulars of Scuppers and Sanitary Discharge Pipes:-

5 scuppers in fore & after wells open type through gunwale angle.  
2 P+S in fore well & 4 P+S in after well.  
No overboard discharges from spaces below the freeboard deck.  
One sanitary discharge (P+S) from port space fitted with storm valve!  
Two " " (P+S) " accommodation on Bridge deck & discharging below freeboard deck fitted with storm valves.

Particulars of Side Scuttles:-

Side Scuttles to crew space in ports provided with hinged deadlights, & of substantial construction. 8 P+S. 10 1/2" dia.  
Side scuttles to fore-castle space fitted with hinged deadlights & of substantial construction. 5 P+S. 10 1/2" dia.

Vertical distance of Sill of lowest Side Scuttle above top of keel

No side lights below freeboard deck.

Particulars of Guard Rails:-

On Forecastle, Bridge & Port decks.  
Height 3'-3" x 1 1/2" rail. Spacing 4' 6" apart.

Particulars of Gangways, Lifelines, etc.:-

Scuttle provision made for rigging lifelines in fore & after wells.

## Particulars of Freeing Arrangements.

	Length of Bulwark	Height of Bulwark	Size of Freeing Ports	Number each side	Area each side	Rule area each side
After Well ...	103.70'	3'-4"	4'-0" x 15"	4	18.68	20.7
Forward Well ...	101.75'	3'-4"	4'-0" x 15"	4	18.68	20.3

State position of each freeing port ... (After Well: 19'-6", 39'-4", 60'-0", 80'-6".  
(F. and A. position and height above deck edge) (Forward Well: 20'-9", 41'-0", 61'-0", 82'-0".  
from side for edge.

State whether the freeing ports are fitted with shutters, bars, or rails, and give particulars of such:- 2 rails. 4' above deck edge = 1 1/2".

Additional area where sheer is less than standard.



### PARTICULARS OF PROTECTION TO OPENINGS, ETC.

HATCHWAYS ON FREEBOARD AND SUPERSTRUCTURE DECKS.								<i>Bridge deck.</i>	
Description of Hatchway ... ..	<i>Freeboard</i>						<i>Side Bunkers.</i>	<i>No 3</i>	<i>Side Bunker.</i>
Dimensions of Hatchway ... ..	1	2	3	4	5				
COAMINGS { Height above Deck ... .. Thickens { Sides { Ends Stiffeners ... .. Brackets, Stays ... ..	39" .50" .50" $8 \times 3\frac{1}{2} \times .50$ " SS, 2E.	39" As No 1 →	$10\frac{1}{2}$ " BA .50" .50" ✓ ✓	As No 1 ✓	As No 1 ✓	$10\frac{1}{2}"$ $10\frac{1}{2}"$ ✓	$10\frac{1}{2}"$ ✓	39" .50" .50" $8 \times 3\frac{1}{2} \times .50$ " SS 2E.	2 1/4" .44" .44" ✓ ✓
HATCH BEAMS { Number ... .. Spacing ... .. Scantling and Sketch ... .. Bearing Surface ... ..	5 ← X 23"-6 16" x .36" 4 x 3 x .42" angles 7 1/2"	5 uniformly spaced As No 1 ✓	3 As No 1 ✓	5 X → As No 1 ✓				3 As No 1 ✓	
FORE AND AFTERS { Number ... .. Spacing ... .. Unsupported Lengths ... .. Scantling* and Sketch ... .. Bearing Surface ... ..									
HATCH COVERS { Material ... .. Thickness ... .. How fitted ... .. Bearing Surface ... ..	W.P. 2 3/4" FAA 2 1/2"		As No ✓			W.P. 2 3/4" FAA 2 1/2"	W.P. 2 3/4" FAA 2 1/2"	W.P. 2 3/4" FAA 2 1/2"	K.P. 2 3/4" FAA 2 1/2"
Spacing of Cleats ... .. Number of Tarpaulins ... ..	24" 3	22" 3	22" X 1	22" 3	24" 3	24" T cleats padding it tarp	24" 2 ✓	24" 2 ✓	24" 2 ✓

\*Are wood fore and afters steel shod at all bearing surfaces?      Yes ✓

Are battens and wedges efficient and in good condition?      Yes ✓

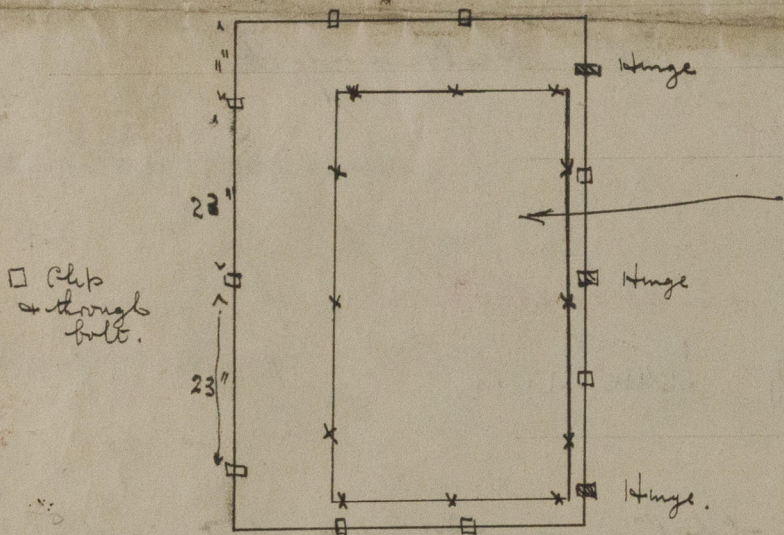
Are tarpaulins in good condition and in accordance with rule requirements?      Yes ✓

Are lashings provided in accordance with rule requirements?      Yes ✓

*Tarp.*

*Locking bars also provided for exposed hatches on freeboard decks.*

Particulars of any special features:—



Hinged steel door at after end of Bridge (P+3)

Portable plate inset.  
Size of opening  $4-3\frac{1}{2}" \times 3-4\frac{1}{2}"$   
x Hook bolts  $12"$  centres ✓

Endorsement at first survey and at surveys for renewal of Certificate :—

The fittings and appliances are in accordance with the particulars shown on this form (or as now modified) and are in good condition.

Repairs ~~are now being~~ <sup>have been</sup> effected to hatch covers, & hatch coaming stiffeners on Nos 4 & 5 hatchways. ✓

Further repairs have been recommended to be dealt with before completion of special survey, as follows:

64 dch coming <sup>27</sup> stiffer after end No 1 little ✓  
 " " " for " No 2 " ✓

Side & end Stiffeners in No 5 hatch coverings. ✓

1702 5-steps to hotel side ~~cleanings~~ to be scaled & further exp.

1-reboards at present assigned. Summer 6'-5" ✓