

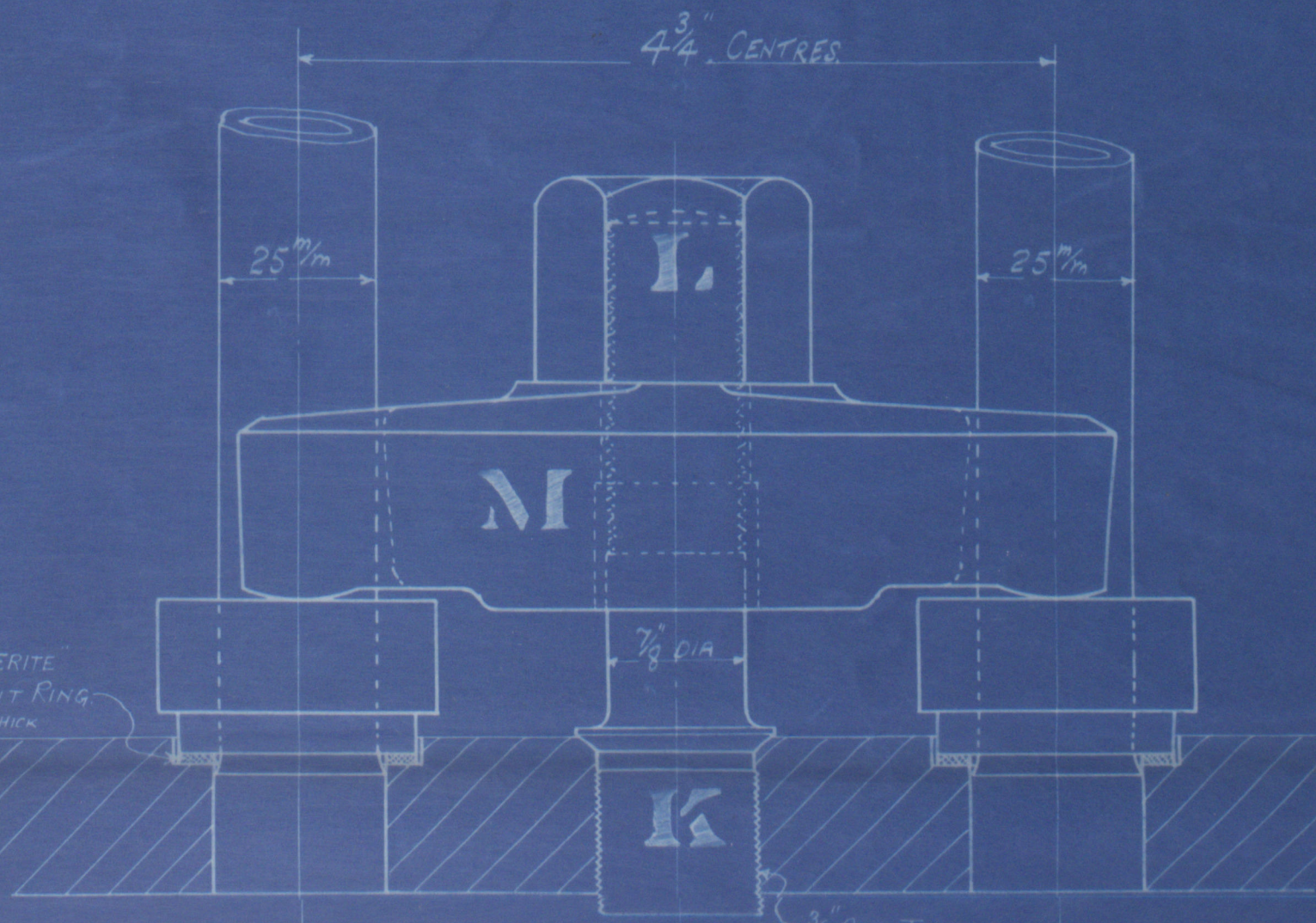
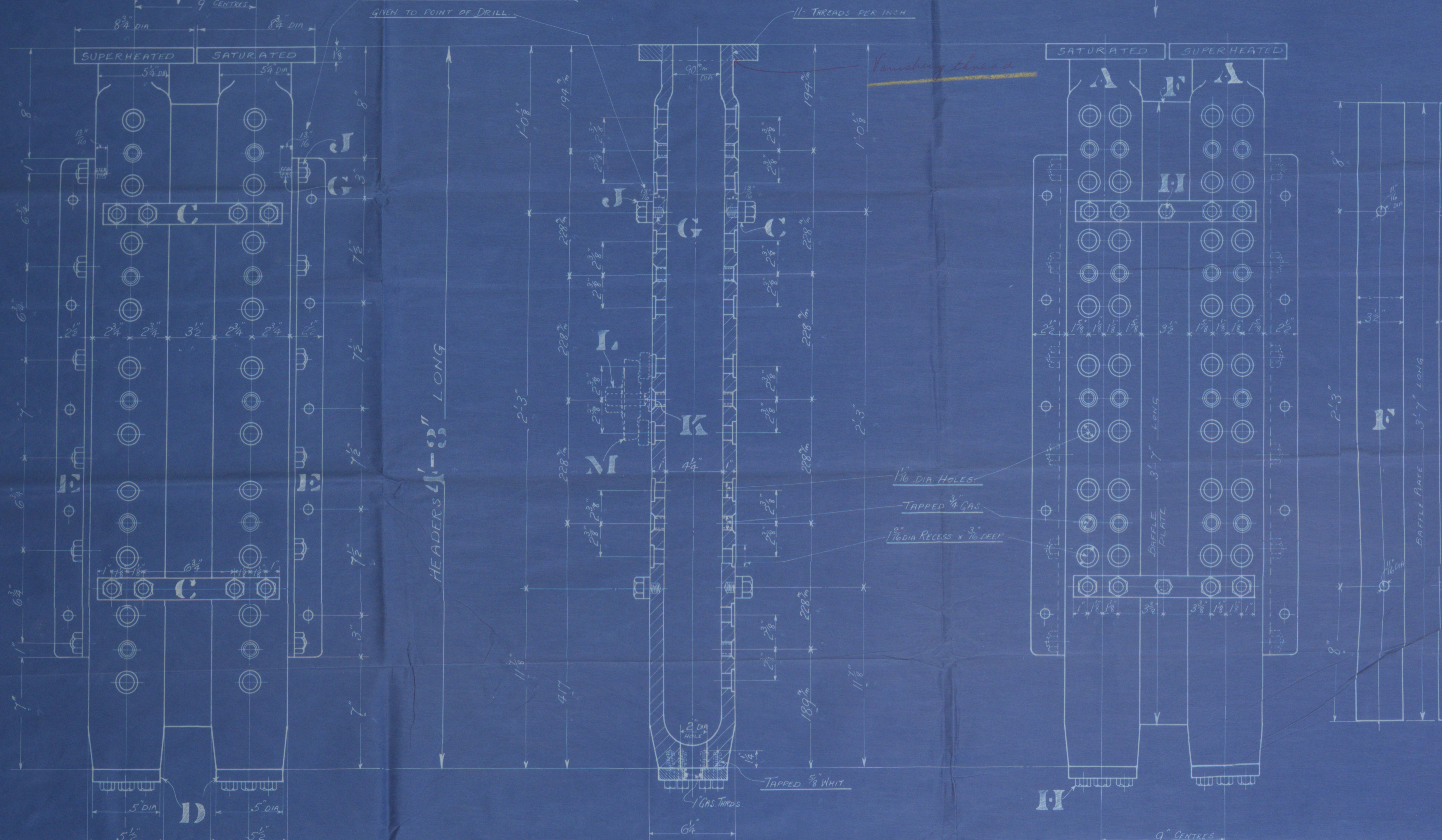
DRILLING FOR CENTRE-BOX
R.H. & L.H. HEADERS.

NOTE: DEPTH OF TAPPED HOLES IN HEADERS ARE
GIVEN TO POINT OF DRILL

DRILLING FOR WING-BOX
R.H. & L.H. HEADERS.

11 THREADS PER INCH

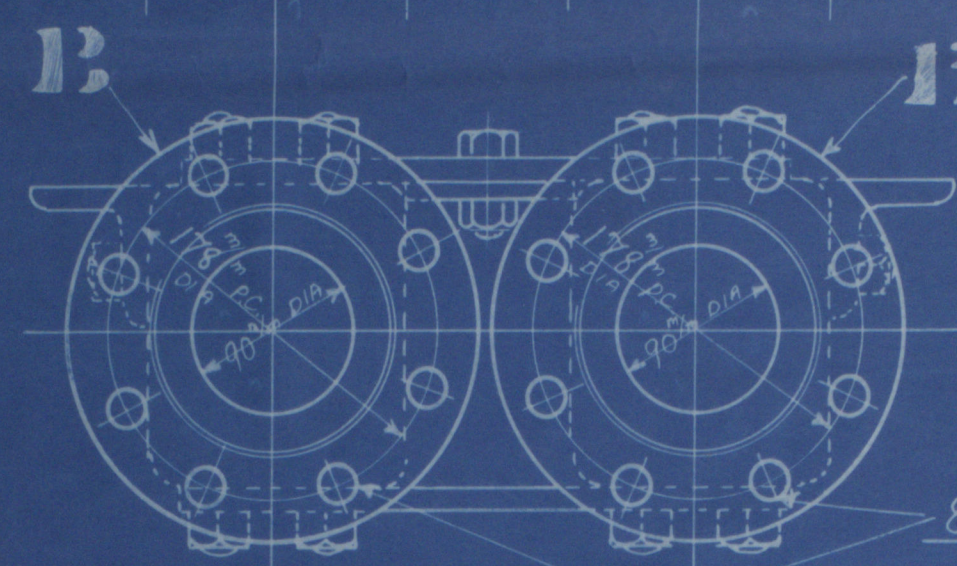
Vanishing Cloud



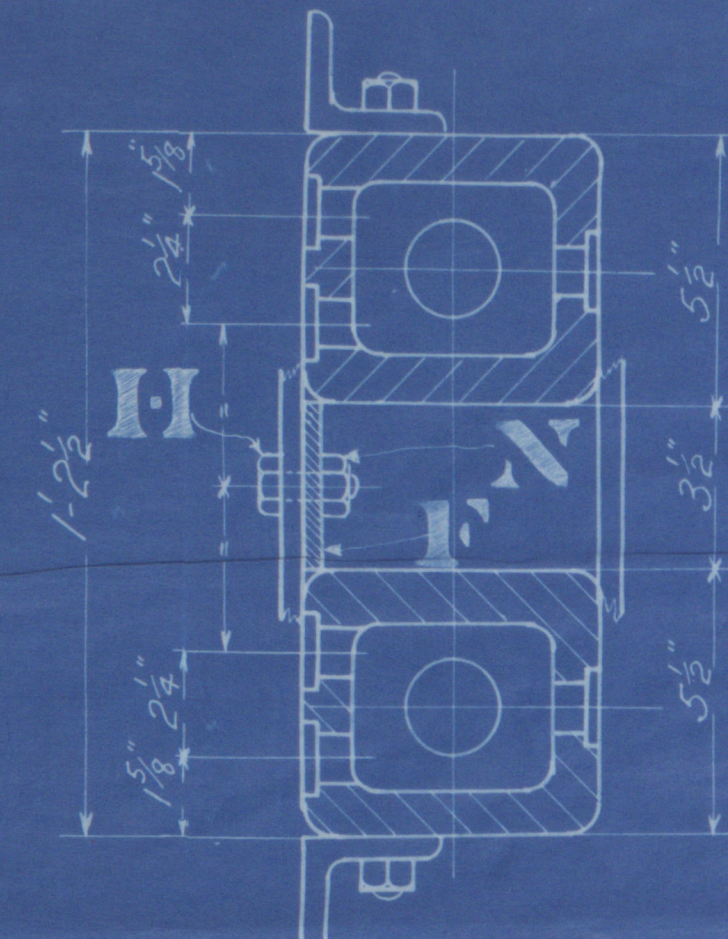
DETAIL OF SUPERHEATER ELEMENT JOINT.
FULL SIZE.

LIST OF MATERIAL FOR ONE BOILER

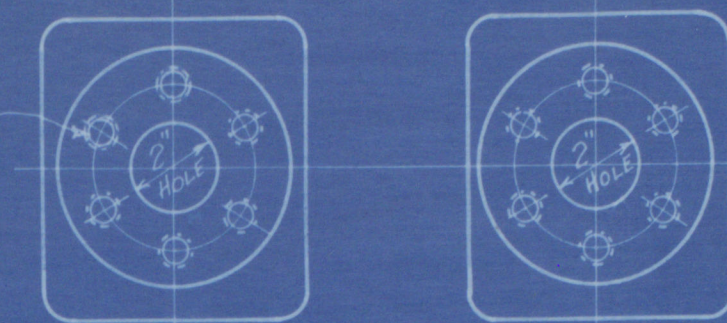
MARK	DESCRIPTION	NO. OF	MATERIAL	REMARKS
A	HEADERS	4	STEEL FORGINGS	1 PR. R.H. & 1 PR. L.H.
B	FLANGES	4	MS.	8 3/4" DIA x 1 1/8" THICK
C	STRAPS	8	STEEL	DRON 22 M 35.20
D	BASE PLATES	4	MS.	" - 22 M 35.71
E	ANGLE SUPPORTS	4	MS.	2 1/2" x 3" x 3/8" x 3'0" LONG
F	BALL PLATES	2	STEEL	3 1/2" x 3 1/2" x 3'0" LONG
G	1/2" WHIT STUDS	56	MS.	DRON 22 M 2140
H	3/8" BOLTS	28	MS.	" - 25 M 4080
J	3/4" NUTS	56	STEEL	" - 25 M 4190
K	1/8" COLLAR STUDS	52	MS.	" - 22 M 1830
L	1/8" WHIT NUTS	52	STEEL	" - 22 M 1840
M	4 3/4" DOGS	52	DRON FORGINGS	" - 24 M 3660
N	3/8" WHIT NUTS	4	STEEL	" - 25 M 4100
O	JOINT RINGS	104	WALKERITE	" - 22 M 2030



8- 21" DIA HOLES
ON 178" DIA P.C.

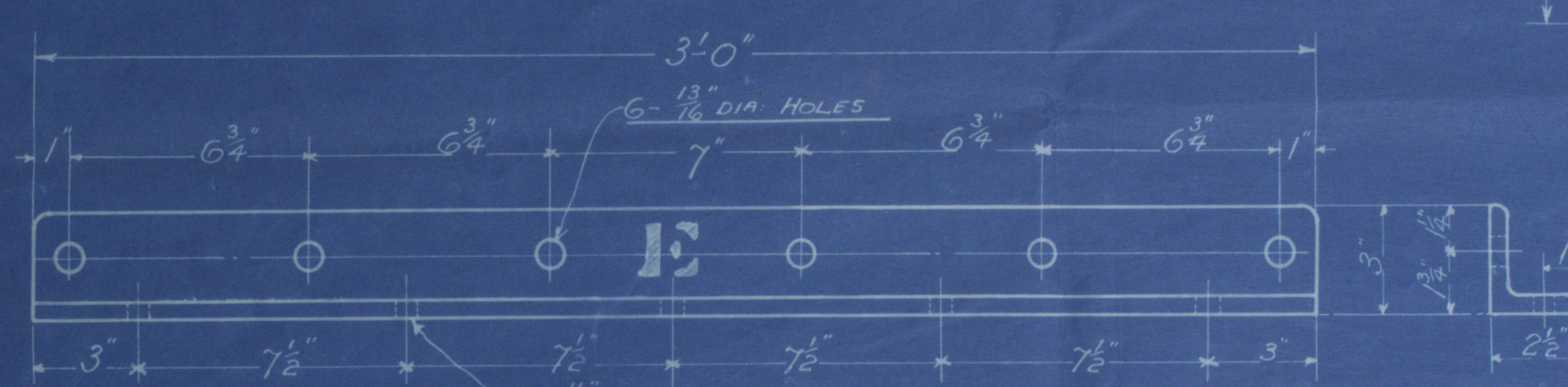


6 HOLES TAPPED 1/2" WHIT &
14 DEEP ON 3 1/2" DIA P.C.



DRILLING FOR BASE

TO PASS LLOYDS SURVEY
WORKING PRESSURE: 185 LBS PER SQ IN
TEST PRESSURE: 555 LBS PER SQ IN



DETAIL OF ANGLE SUPPORT

MESSRS VAN. P. SMIT. JR.
BOILERS NOS 475-476-477.

THE SUPERHEATER CO. LTD.
195 STRAND LONDON W.C.2

TITLE HEADERS

ORDER NO'S	REFERENCE FILE NO.	DRAWING NO.
1458	456 M 6111 B	MA 500

SCALE
3" = ONE FOOT
BY VAN. P. SMIT. JR.
18/10/26

REGISTERED
LLOYD'S SURVEY

Superheate to Lth

for "Encroplein"
Ret. 16019
RETAIN
Van P. Smit

Rotterdam

Ship No. 375

RETAIN

Header.

W3587-0371

© 2019
GEN. BOX NO 498

Lloyds Register
Foundation