

GERMAINE L.D.

7-11-32

C.S.S

FLUSH OF F.S.

33 1/2 x 52 } 88.0

min .42

upper

16 3/4 x 35 } 52.8

7 1/4 = 3 1/4 @ 25"

min .32

2nd

7 1/4 = 3 1/4 @ 25"

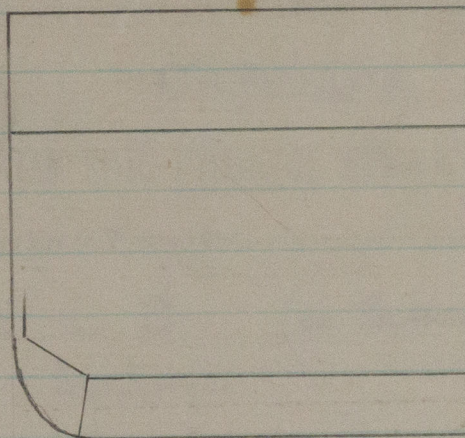
40

51 x 50

14 x 54

51

49 1/2 x 72



SHIP

52 x 54 } 42.0 @ cargo hatch

36 } 64.4 @ casing + coal hatch

18

40

upper

16 x 44 } 66.4 @ cargo H. 7 1/4 = 3 1/4 @ 25"

34 } 62.6 @ casing + coal hatch

2nd

= 80.5 @ 25"

36

41 x 48

41 x 50

60

46 x 94

2.0m.  
7-11-32



© 2019

Lloyd's Register

Foundation

W 387-0132

Wrought 25-0

W 387-0133