

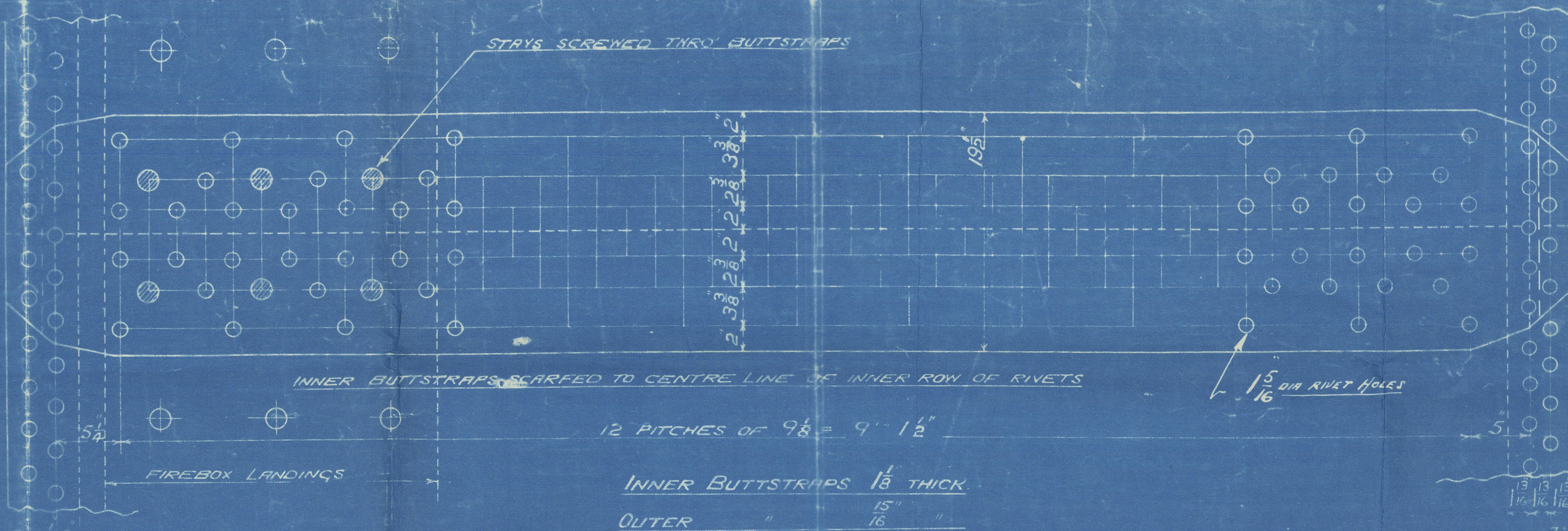
SURFACES	ONE BOILER	2 BOILERS
TUBES	2100	6500
FIREBOX TOP & SIDES	158	474
BACK	82	246
TUBE PLATE	55	165
FURNACES	161	483
TOTAL HEATING SURFACE	2556	7668
GRATE AREA (5" x 6" BARS)	63.3	190
TUBE AREA	1165	3495
WATER	160	480
STEAM SPACE	514	1542
GRATE AREA : HEATING SURFACE	1 : 40.2	
WATER : TUBE	1 : 33.2	
WATER : STEAM SPACE	1 : 2.52	
% BOILER ABOVE FIREBOX	32.2	
WEIGHT OF WATER	26 TONS	79 TONS

RIVETING	LONG L	BACK END CIRC L	FRONT END CIRC L
RIVET HOLE DIA	1 1/8"	1 1/8"	1 1/8"
PITCH	9 1/2"	3 5/8"	3 1/4"
% PLATE	85.6	63	63
% RIVET	88.3	51.9	46.5

LIMITS OF TENSILE STRENGTH & MATERIAL	
SHELL, BUTTSTRAPS & GIRDERS	28 TO 32 TONS
OTHER PLATES	26 " 30 "
FURNACES	26 " 30 "
MAIN STAYS	28 " 32 "
SCREWED STAYS	26 " 30 "
RIVET BARS	26 " 30 "

ALL RIVET HOLES DRILLED IN PLACE  
MAIN STAYS SWELLED AT ENDS BY  
HYDRAULIC PRESSURE AND ANNEALED

BACK END CIRC L  
155 PITCHES OF 3 1/4"

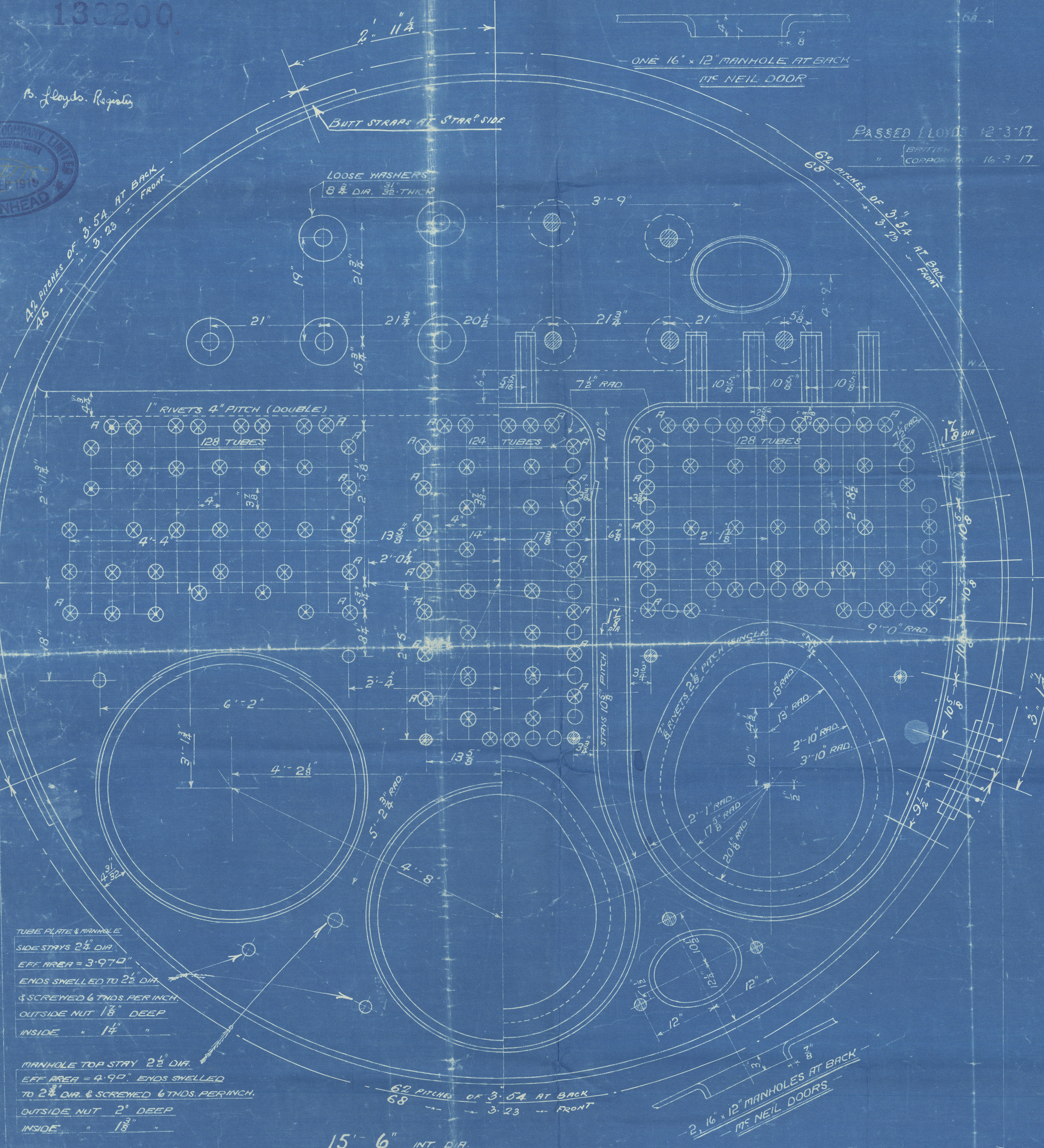


FRONT END CIRC L  
182 PITCHES OF 3 1/4"

BOILERS No 867  
S/S WAR CADET 1874  
In approval as shown by letter (B) 24/5/18 for  
Boiler No 2000/1/3.

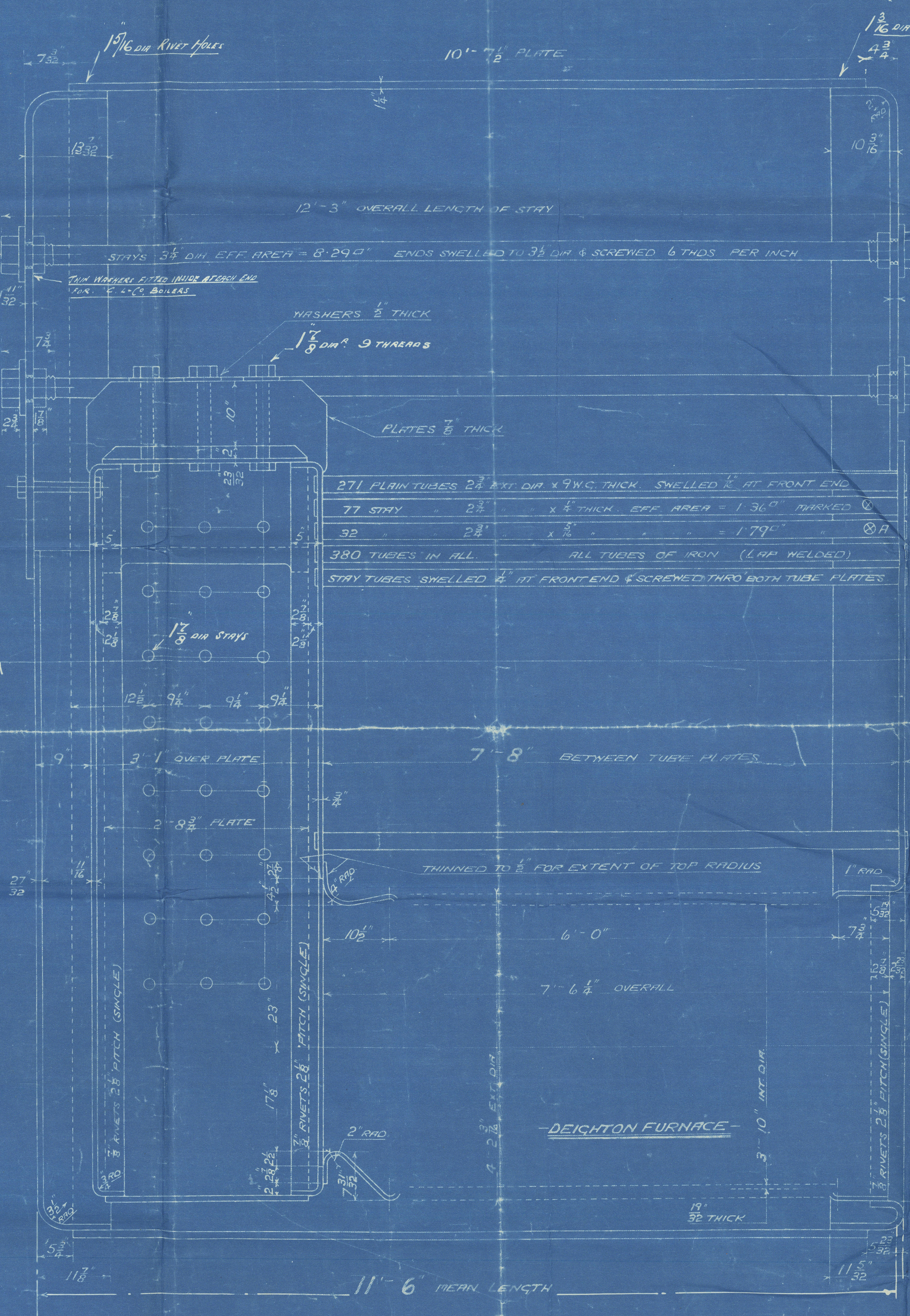
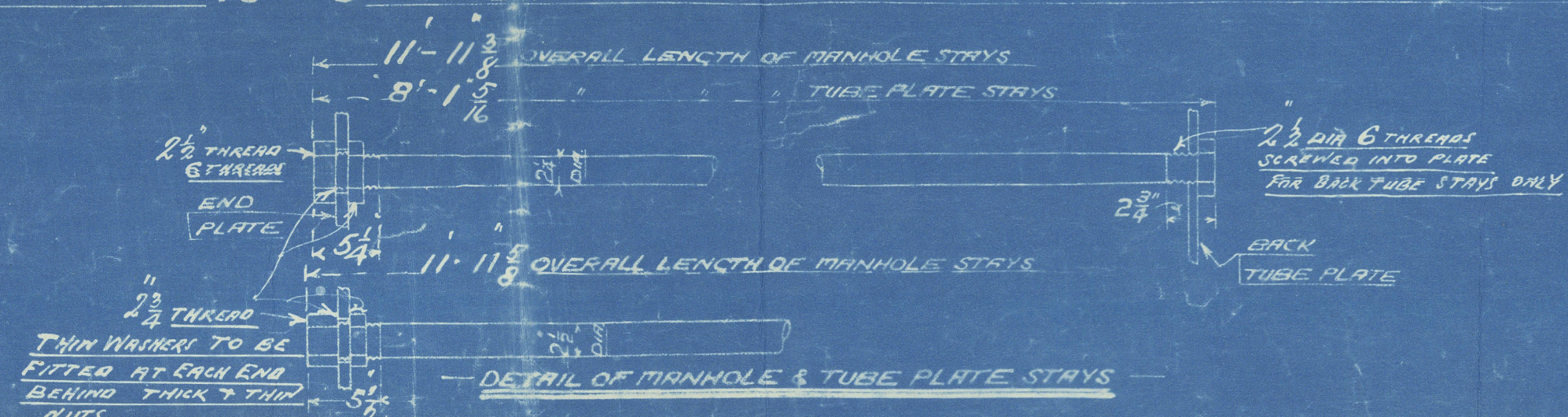
130200

PASSED LLOYDS 12-3-17  
BENTLEY 16-3-17



TUBE PLATE & MANHOLE  
SIDE STAYS 2 1/2" DIA.  
EFF AREA = 3.974"  
ENDS SWELLED TO 2 1/2" DIA  
& SCREWED 6 THDS PER INCH  
OUTSIDE NUT 1 1/8" DEEP  
INSIDE " 1 1/4"

MANHOLE TOP STAY 2 1/2" DIA.  
EFF AREA = 4.92". ENDS SWELLED  
TO 2 1/2" DIA & SCREWED 6 THDS PER INCH.  
OUTSIDE NUT 2" DEEP  
INSIDE " 1 1/8"



MAIN BOILER (SECOND SERIES)

3 OFF FOR EACH VESSEL

WORKING PRESSURE = 180 LBS PER SQ INCH  
TO PASS LLOYDS SURVEY  
SCALES 1" & 1 1/2" = ONE FOOT

FIREBOX STAYS - STEEL			
POSITION	MARK	DIA	EFF AREA
BACK TOP & SIDES	18	1 1/2"	2.36 sq"
WIDE SPACE	18	2"	2.71 sq"
TOP ROW	26	2 1/2"	3.45 sq"

ALL FIREBOX STAYS SCREWED THRU BOTH PLATES & NUT FITTED AT EACH END  
EXCEPT STAYS FROM WING FIREBOX TO SHELL WHICH PROJECT 8" & ARE CAULKED.  
ALL 1 1/2" NUTS 1 1/8" DEEP EXCEPT ON GRIFFER TOPS WHERE THE OUTSIDE NUTS ARE 1 1/2" DEEP.  
ALL 2 1/2" & 3" NUTS 1 1/2" DEEP

DAVID ROWAN & CO'S  
REFERENCE  
OT 23498A  
TRACED 7th March 1917



Cammell Laird & Co.

No 853

Boiler plan ✓

S.S. "War Cadet"

ex

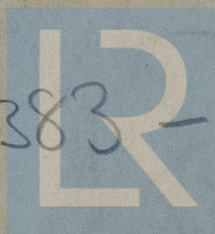
LIVERPOOL.

Report No.

79596

n/n. "Dionyssios Stathatos"

RETAIN



W383 -

© 2020

0174

Lloyd's Register  
Foundation