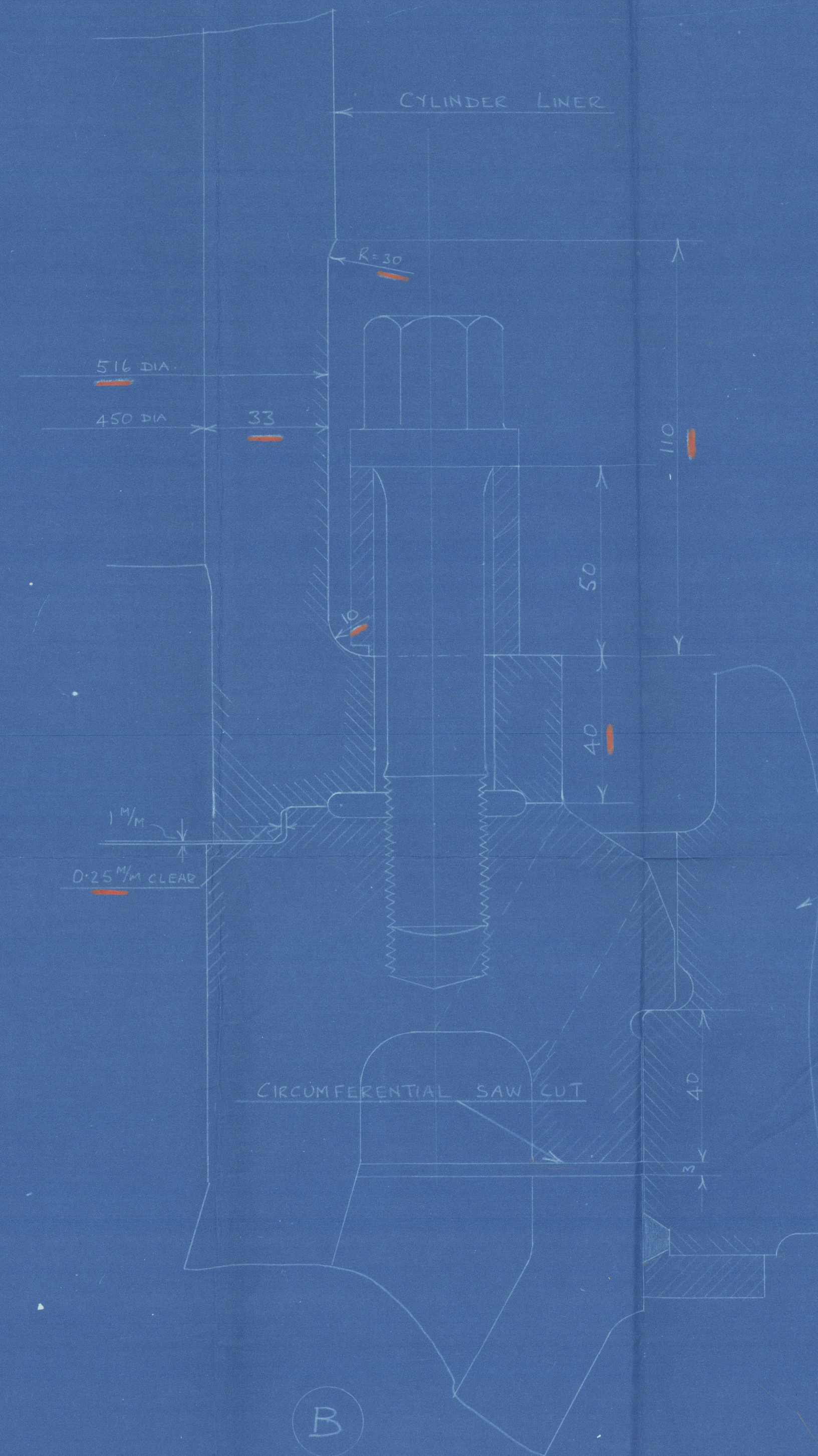


A

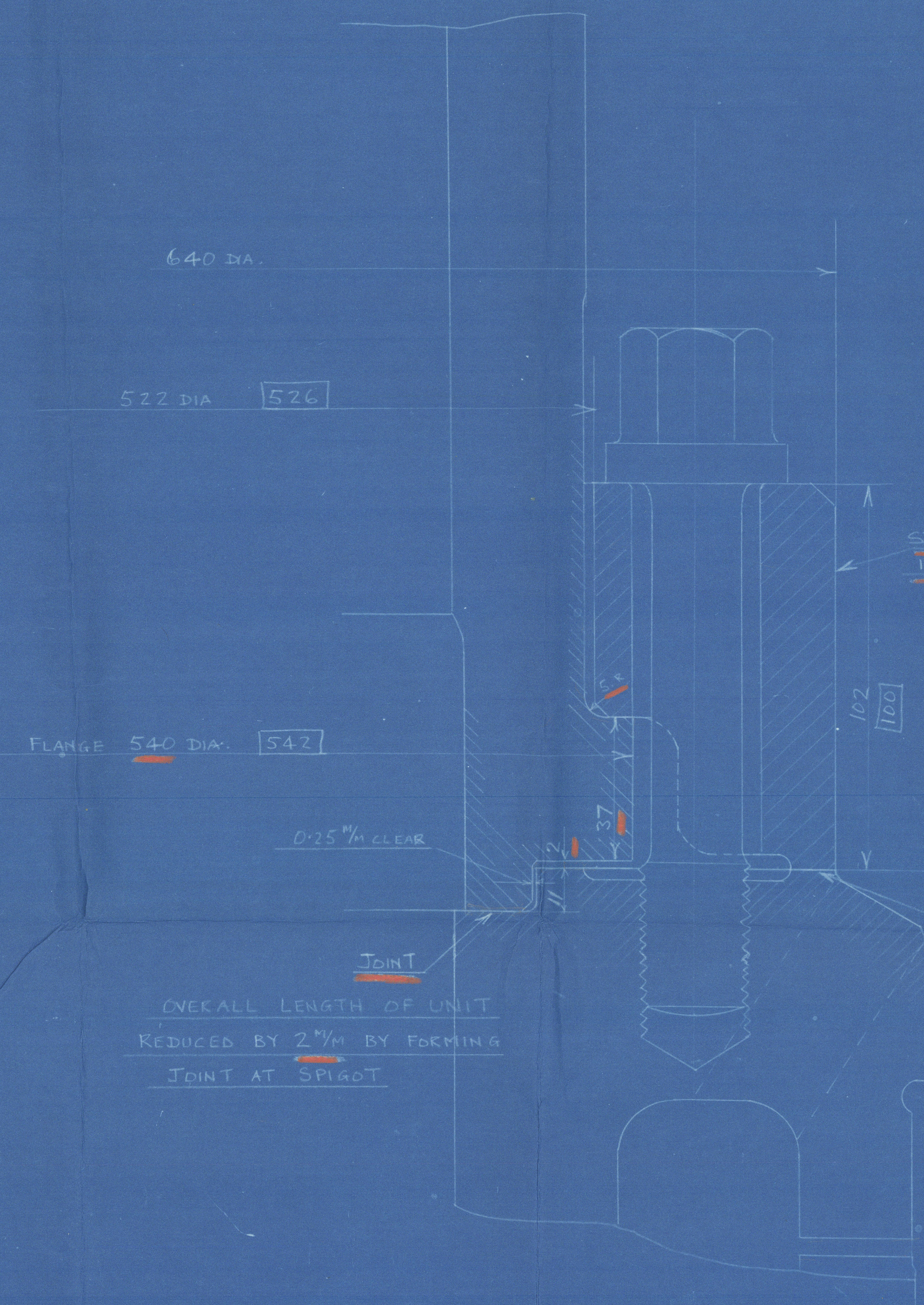
ORIGINAL DESIGN.



B

MODIFICATION TO LINER & COVER.
(UNDERLINED IN RED)

OCT. 1937



C

MODIFICATION TO LINER TO SUIT CLAMP RINGS. JAN. 1938
(UNDERLINED IN RED)

DIMENSIONS MODIFIED LATER SHOWN THUS [000]

"DUNNOTTAR CASTLE" "DUNVEGAN CASTLE"

DA. 9 450 1200 2.C.

MODIFICATIONS TO CYLINDER LINERS & COVERS



© 2020 Lloyd's Register
W385-0636 edition

DA. 9 450 1200 2.C.
MODIFICATIONS TO CYLINDER LINERS ETC.

"DUNNOTTAR CASTLE"

"DUNVEGAN CASTLE"

SEQUENCE OF CYLINDER LINER MODIFICATIONS

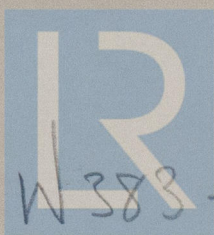


© 2020

Lloyd's Register
Foundation

W 383- 0036

RETAIN



© 2020

Lloyd's Register
Foundation

W 383 - 0036