

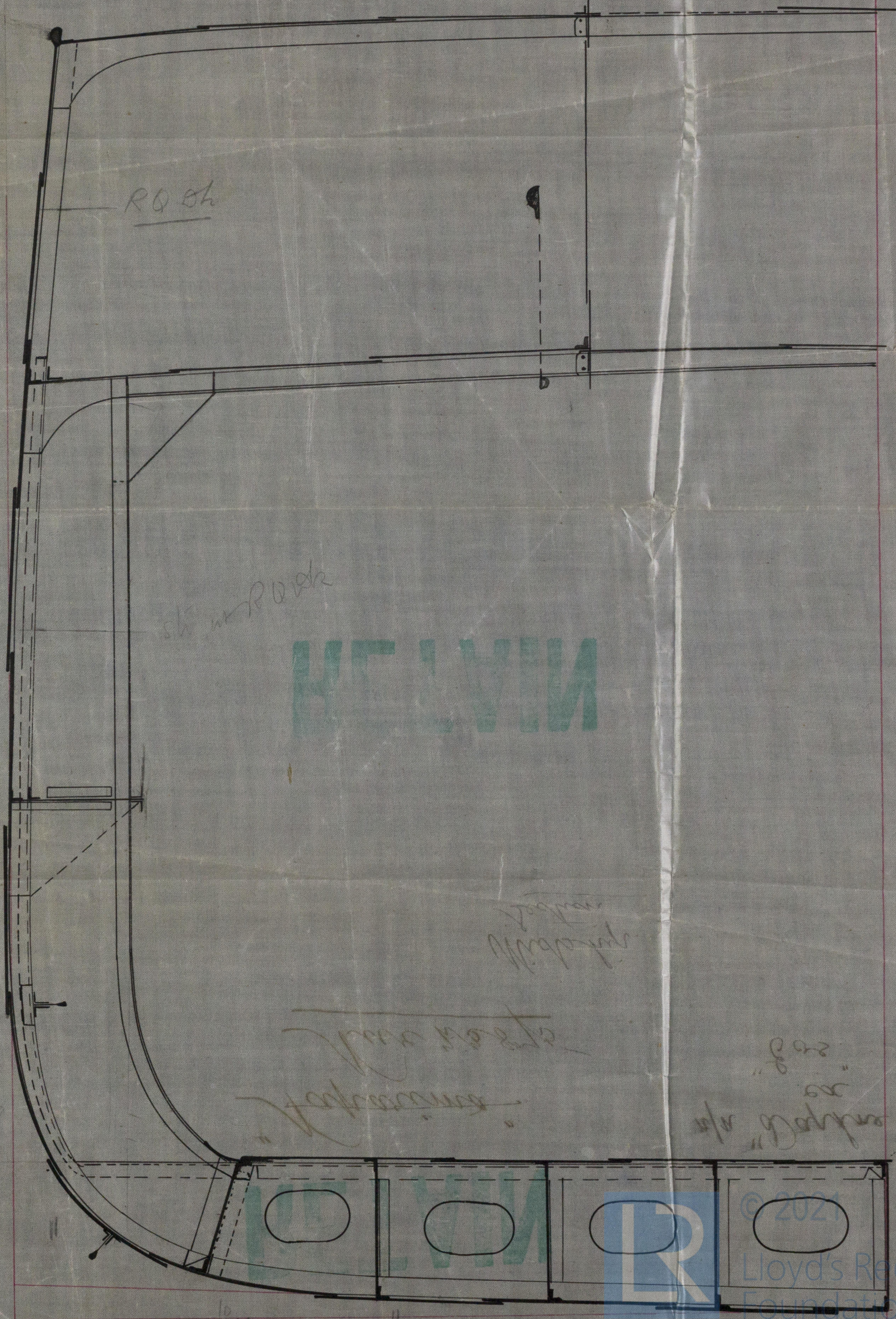
S. S. N° 49

MIDSHIP SECTION

SCALE $\frac{1}{2}$ " = 1 FOOT.

REARRANGEMENT OF SHELL PLATING

M. N 27/2/90



W 382-0186



© 2021

Lloyd's Register
Foundation

W382-0186

W382-0186

RETAIN

"Kaparima"

Nuc 23875

Midship
Section

n/a "Daphne"
ex
"Cos."

RETAIN



© 2021

Lloyd's Register
Foundation