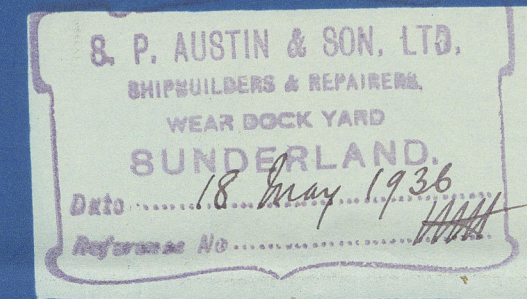


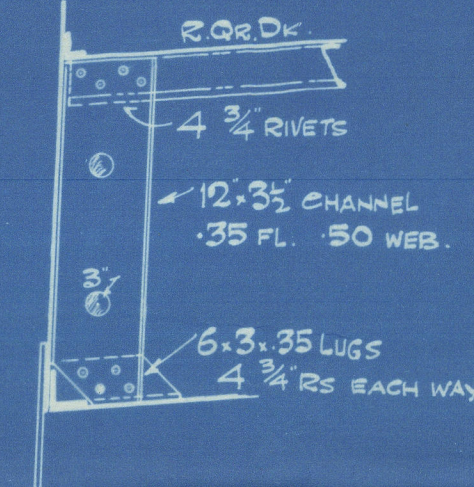
# No 341. Midship Section etc

214-0' x 34-33' x 15-0' R.QrDk 3-75'

GENERAL PARTICULARS			EQUIPMENT		
LENGTH ON LWL	L	214-0 FEET	L x B + D		10557
BREADTH MOULDED	B	34-33 FEET	RAISED OR DK	135-9' x 3-75'	510
DEPTH MOULDED	D	15-00 FEET	FORECASTLE	21-84' x 7-0' x 7-5'	115
1st LONG. NUMBER [L x D]		3210	LOWER DECKHOUSE	13-0' x 7-0' x 5-0'	46
2nd LONG. NUMBER [L x B + D]		10557	CASINGS AFT	48-5' x 7-25' x 5-0'	169
PROPORTIONS	1/2 UP DK	14-27 RQR	11-41		
ERECTIONS	RQR DK	135-9' x 3-75'	7-3-7%		
d (corrected for)	1/2 UPPER DK	11-83'			
	RAISED OR DK	15-58'			
CLASS 100 A1 LLOYDS SPECIAL SURVEY					
STEAM BAR (LOWER PORTION) 6-3/4" x 1-1/2" UPPER PART OF STEAM FORMED OF 40 FLANGED PLATE					
STERN POST 6-3/8" x 4-3/8" DETAIL PLAN TO BE SUBMITTED ALSO RUDDER PLAN.					



FRAMING IN BREAK  
FRAMES 57 TO 60

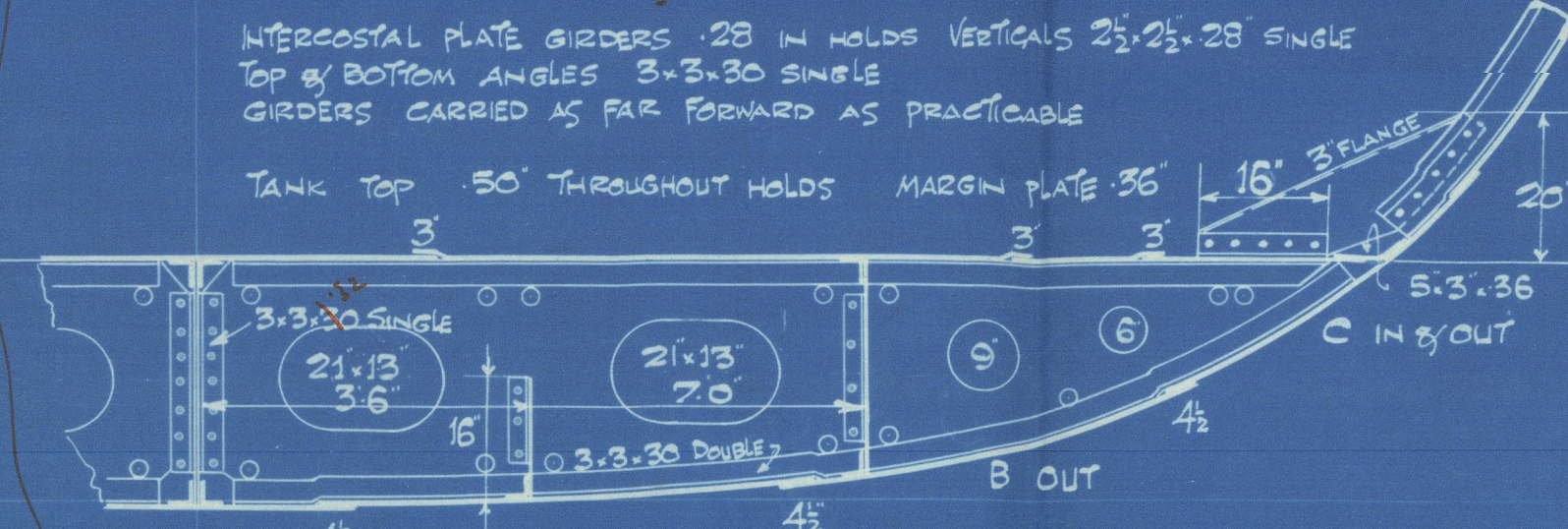


## SECTION THRO. DOUBLE BOTTOM FWD OF 1/2 L FWD

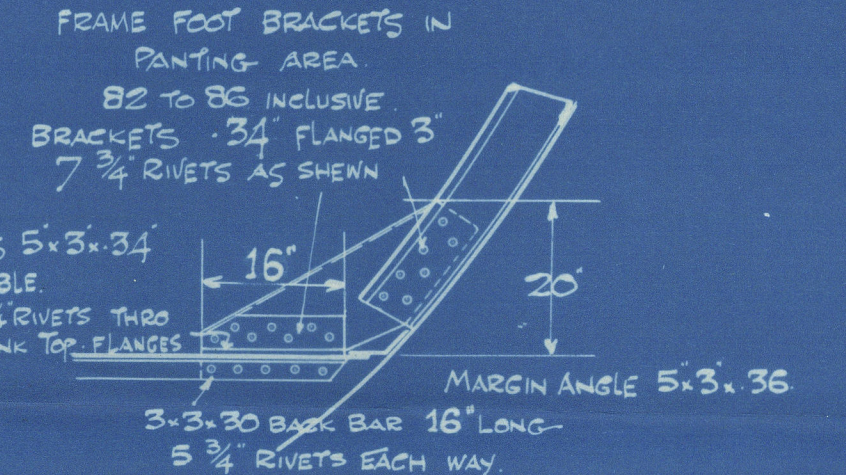
FLOOR PLATES 30 x .03 FOR 27" SPACING  
FRAME BOTTOMS 3-3/4" x 20" DOUBLE FORWARD OF HALF LENGTH FWD  
TO RULE POSITION OF COLLISION BULKHEAD  
REVERSE BARS 3-3/4" x 20" SINGLE THROUGHOUT HOLDS

INTERCOSTAL PLATE GIRDERS 28 IN HOLDS VERTICALS 2-1/2" x 28" SINGLE  
TOP & BOTTOM ANGLES 3-3/4" x 30" SINGLE  
GIRDERS CARRIED AS FAR FORWARD AS PRACTICABLE

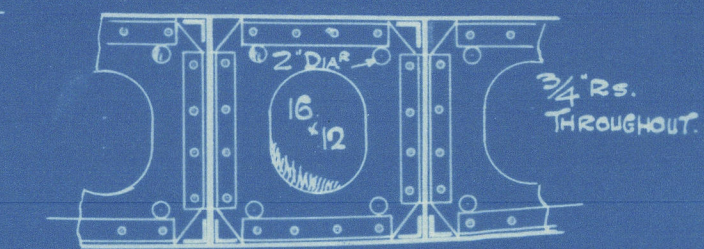
TANK TOP .50" THROUGHOUT HOLDS MARGIN PLATE 36" 16" 3-3/4" 20"



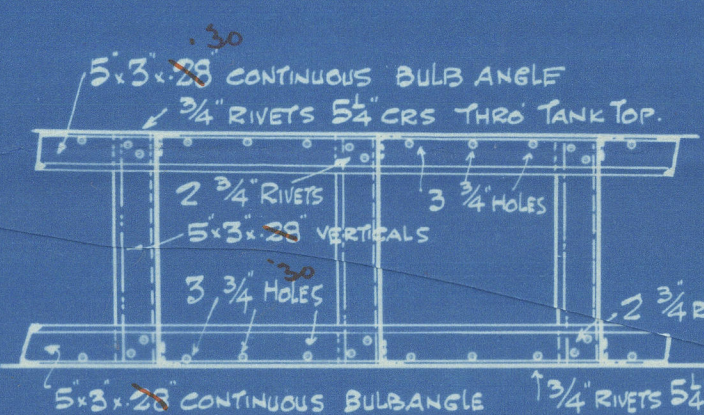
4-3/4" x 32" INTERMEDIATE FRAMES (FITTED INTERCOSTALLY BETWEEN GIRDERS) FROM CENTRE GIRDER TO TANK TOP FORWARD OF HALF LENGTH FWD TO COLLISION BULKHEAD (OWNERS REQUIREMENTS) A BY B STRAKES INCREASED .02 FWD OF 1/2 LENGTH FWD TO RULE POSITION OF COLLISION BULKHEAD .39 + .02 + .04 (FOR 27" SPACING) = .45 1/8 3/4" RIVETING THROUGHOUT.



INTERCOSTAL GIRDERS FWD  
PLATES 28" WITH 16-1/2" MANHOLES  
VERTICALS 2-1/2" x 28" SINGLE  
TOP & BOTTOM LUGS 3-3/4" x 30" SINGLE



BULB ANGLE GIRDER (28 TO 72 APPROX.)

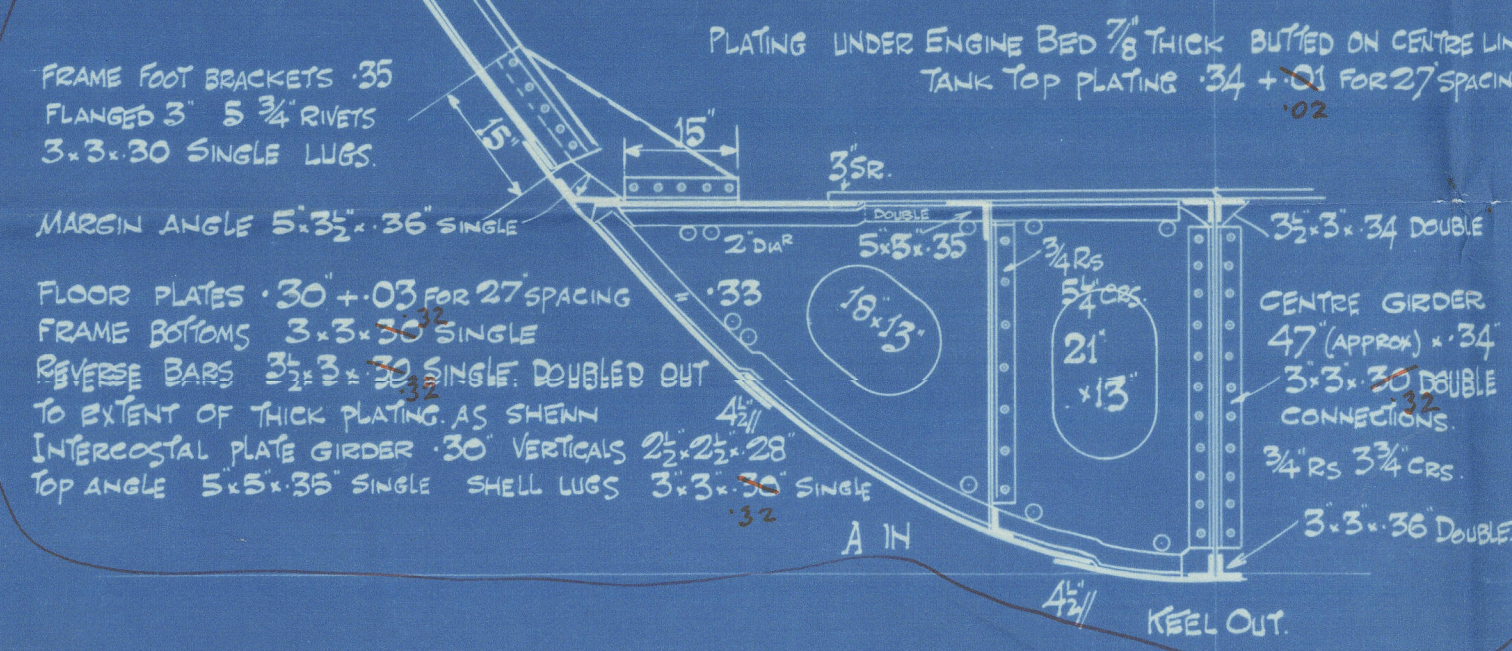


FORECASTLE  
SIDE PLATING 30" SINGLE RIVETED SEAMS  
BUTTS OVERLAPPED 3" SINGLE RIVETED  
PLATING IN WAY OF HAWSEPIPE .45" LOCAL STRENGTHENING TO SURVEYORS SATISFACTION  
DECK PLATING ETC AS SHOWN ON PROFILE & DECK.

## SECTION THRO ENG RM TANK ENGINES AFT

d for framing 14-25 approx.

FRAMES 6 TO 15 6-3/8" x 28" BANGLES OBS 27" OR 6-3/8" x 33" BANGLES NBS 1/2 APART.



BULKWARK PLATING .25  
VERT. STIFFERS 2-1/2" x 20"  
SAY 5-3/8" x 32" B AS NBS  
5-3/8" x 32" LUGS TO DK 3-3/4" RS  
FREEING PORTS TO RULE

H STRAKE IN & OUT  
RQR DK SHEER STRAKES  
48" x 46" FOR 1/2 LENGTH TO 35 APT  
INCREASED AT BREAK AS PER PROFILE  
BUTTS OVERLAPPED BY TREBLE RIVETED  
FOR 1/2 LENGTH TO DOUBLE AT ENDS

G STRAKE OUT  
45" x 44" FOR 1/2 LENGTH TO 35 APT  
BUTTS OVERLAPPED BY TREBLE RIVETED  
TO DOUBLE AT ENDS

F STRAKE IN 54"

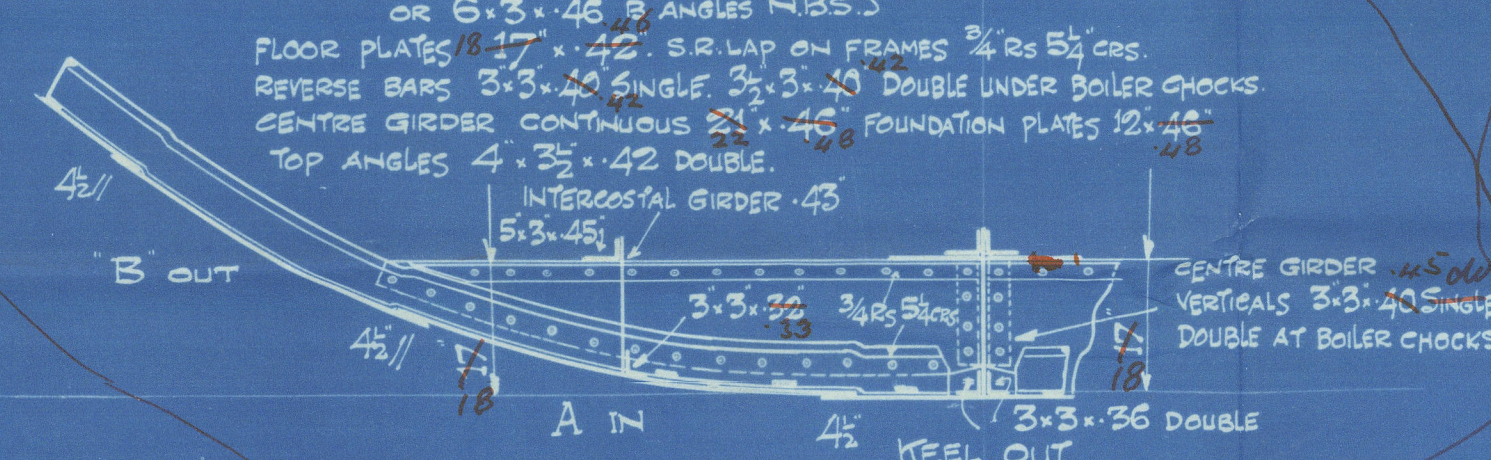
E & F STRAKES  
54" x 39" FOR 1/2 LENGTH TO 35 APT  
+ .04 FOR 27" SPACING  
= .43 TO 35 3/4" RS  
BUTTS OVERLAPPED BY DOUBLE RIVETED  
E STRAKE THROUGHOUT  
F STRAKE AFT ONLY

E STRAKE OUT 54"

## SECTION THRO BOILER ROOM

d for framing 17-25 approx.

FRAMES 16 TO 21 6-3/8" x 36" BANGLES OBS 27" APART OR 6-3/8" x 46" BANGLES NBS 1/2 APART



D STRAKE IN  
51" x 39" FOR HALF LENGTH TO 35 AT ENDS  
+ .04 IN WAY OF 27" SPACING  
= .43 TO 35 3/4" RS  
BLUE KEEL 6-3/4" x 40" TEE BAR  
7-40" BULB PLATE

C STRAKE 61"

B STRAKE OUT 61"

A STRAKE IN 62"

KEEL OUT 45"

A STRAKE IN 62"

B STRAKE OUT 61"

C STRAKE IN & OUT 61"

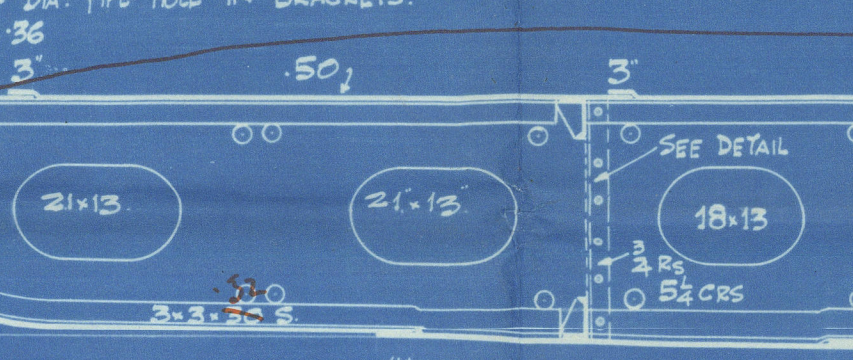
## FRAMES TO RAISED OR DECK

STERN TO 4 5-3/8" x 36" BANGLES OBS 27" APART  
(AFTER PEAK) OR 5-3/8" x 44" ANGLES  
NO 22 TO 26 6-3/8" x 40" BULB ANGLES OBS 27" APART  
(B.M. BY CROSS BKS) OR 6-3/8" x 40" BULB ANGLES NBS  
NO 28 TO 55 6-3/8" x 34" BULB ANGLES OBS 27" APART  
(HOLDS) OR 6-3/8" x 37" BULB ANGLES NBS

## DOUBLE BOTTOM IN HOLDS

CENTRE GIRDER 31" x 38" FOR 1/2 L TO 34 AT ENDS BUTTS OVERLAPPED BY DOUBLE RIVETED THROUGHOUT  
BOTTOM ANGLES 5-3/8" x 36" FOR 1/2 L TO 35 AT ENDS DOUBLE THROUGHOUT  
TOP ANGLES 5-3/8" x 34" DOUBLE THROUGHOUT VERTICALS 3-3/4" x 20" SINGLE  
FLOOR PLATES 30 x .03 FOR 27" SPACING .33 TANK END FLOORS 41 NO VERT. STIFFERS  
FRAME BOTTOMS 3-3/4" x 20" SINGLE DOUBLE FWD TO RULE REVERSE BARS 3-3/4" x 20" SINGLE  
BULB ANGLE GIRDER AMIDSHIPS AS SHOWN ON DETAIL SKETCH  
INNER BOTTOM  
MIDDLE LINE STRAKE 41" x 34" FOR 1/2 L TO 32 AT ENDS BUTTS OVERLAPPED BY DOUBLE RIVETED THROUGHOUT  
TANK TOP PLATING .30 + .02 FOR 27" SPACING .32 BUTTS OVERLAPPED BY DOUBLE RIVETED TO SINGLE  
MARGIN PLATE 29" x 34" FOR 1/2 L TO 34 AT ENDS + .02 = .36 BUTTS OVERLAPPED BY DOUBLE RIVETED  
MARGIN ANGLE 3-3/4" x 36" SINGLE 3/4 RS 3-3/4" CRS  
TANK TOP THROUGHOUT HOLDS (EXCL. MARGIN PLATE) INCREASED TO .50 (NO CEILING)

FRAME FOOT BRACKETS 3-3/4" FLANGED 3"  
3-3/4" x 30" SINGLE LUGS TO TANK TOP  
5-3/4" RIVETS IN EACH FLANGE  
2-1/2" CEILING OVER BUTTS IN HOLDS & BUNKERS  
BUTTS IN B.M. BY CROSS BUNKER 44 3-3/4" x 44 LUGS  
4" DIA PIPE HOLE IN BRACKETS



AB & C STRAKES .39 FOR HALF LENGTH TO 35 AT ENDS  
+ .04 FOR 27" SPACING = .43 TO 35 3/4" RS  
+ .05 BOSS PLATES .39 1/4" = .40

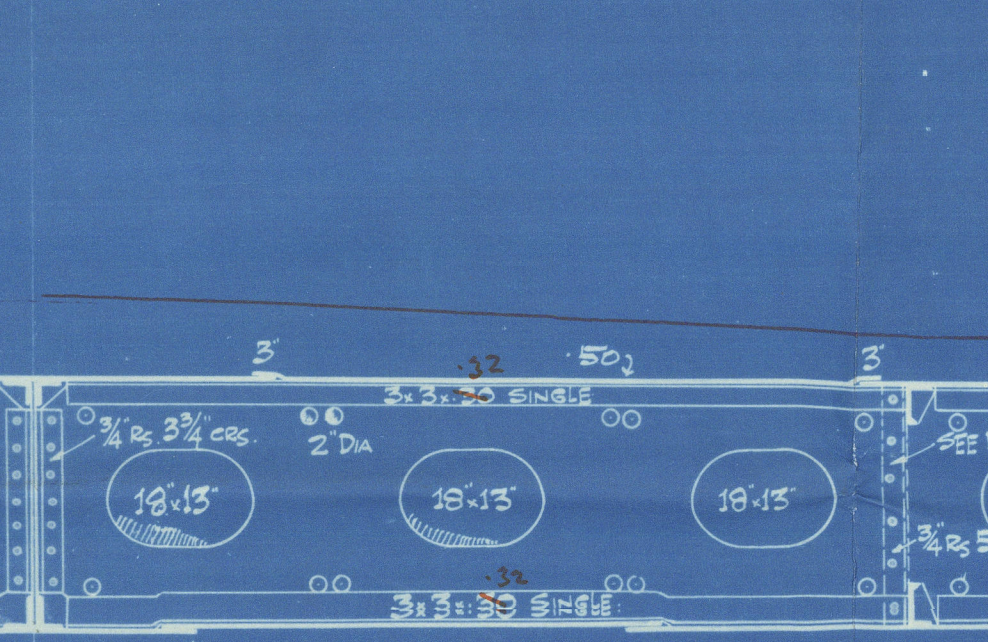
4-3/4" x 49" FOR 1/2 L TO 46 AT ENDS  
BUTTS OVERLAPPED BY TREBLE RIVETED THROUGHOUT  
7-1/2" BUTTS 2-1/2" CRS

INTERMEDIATE FRAMES ALSO FITTED (SEE ABOVE)

BUTTS OVERLAPPED BY TREBLE RIVETED FOR HALF LENGTH TO DOUBLE AT ENDS WHERE NOT EXCEEDING .42 (RULE THICKNESS)

## FRAMES TO UPPER DECK

NO 57 TO 60 6-3/8" x 25" BULB ANGLES OBS 27" APART  
(DEEP TANK) OR 6-3/8" x 32" BULB ANGLES NBS  
NO 62 TO 81 5-3/8" x 25" BULB ANGLES OBS 27" APART  
(HOLDS) OR 5-3/8" x 31" BULB ANGLES NBS  
NO 82 TO 86 7-3/8" x 44" BULB ANGLES OBS 27" APART  
(PAINTING AREA) OR 8-3/8" x 32" BULB ANGLES NBS  
HOLD STIFFENERS OMITTED IN PAINTING AREA  
NO 88 TO 91 5-3/8" x 36" ANGLES SPACED 22 1/2" APART + .10 FORECASTLE DECK  
(GIR PEAK) OR 5-3/8" x 44" ANGLES



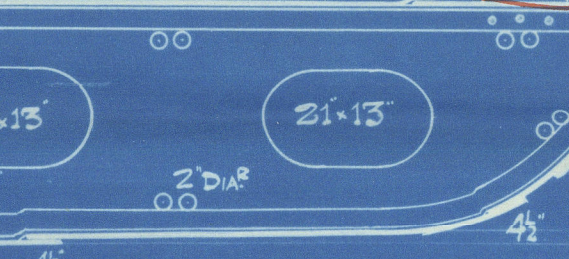
FRAME FOOT BRACKETS 3-3/4" FLANGED 3"  
3-3/4" x 30" SINGLE LUGS TO TANK TOP  
5-3/4" RIVETS EACH WAY  
2-1/2" CEILING OVER BRACKETS  
IN HOLD  
4" DIA PIPE HOLE IN BUTTS

4-3/4" x 49" FOR 1/2 L TO 46 AT ENDS  
BUTTS OVERLAPPED BY TREBLE RIVETED THROUGHOUT  
7-1/2" BUTTS 2-1/2" CRS

INTERMEDIATE FRAMES ALSO FITTED (SEE ABOVE)

BUTTS OVERLAPPED BY TREBLE RIVETED FOR HALF LENGTH TO DOUBLE AT ENDS WHERE NOT EXCEEDING .42 (RULE THICKNESS)

FRAME FOOT BRACKETS 3-3/4" FLANGED 3"  
3-3/4" x 30" SINGLE LUGS TO TANK TOP  
5-3/4" RIVETS EACH WAY  
2-1/2" CEILING OVER BRACKETS  
IN HOLD  
4" DIA PIPE HOLE IN BUTTS



4-3/4" x 49" FOR 1/2 L TO 46 AT ENDS  
BUTTS OVERLAPPED BY TREBLE RIVETED THROUGHOUT  
7-1/2" BUTTS 2-1/2" CRS

INTERMEDIATE FRAMES ALSO FITTED (SEE ABOVE)

BUTTS OVERLAPPED BY TREBLE RIVETED FOR HALF LENGTH TO DOUBLE AT ENDS WHERE NOT EXCEEDING .42 (RULE THICKNESS)

## G STRAKE OUT

54" x 39" FOR HALF LENGTH TO 35 AT ENDS  
+ .04 IN WAY OF 27" SPACING  
= .43 TO 35 3/4" RS  
BUTTS OVERLAPPED BY DOUBLE RIVETED THROUGHOUT

## F STRAKE IN

54" x 50" FOR HALF LENGTH FWD TO 35 AT FORE END  
BUTTS OVERLAPPED BY TREBLE RIVETED TO DOUBLE AT ENDS

## E STRAKE OUT

54" x 39" FOR HALF LENGTH TO 35 AT ENDS  
+ .04 IN WAY OF 27" SPACING  
= .43 TO 35 3/4" RS  
BUTTS OVERLAPPED BY DOUBLE RIVETED THROUGHOUT

## D STRAKE IN

51" x 39" FOR HALF LENGTH TO 35 AT ENDS (INSIDE)  
+ .04 IN WAY OF 27" SPACING  
= .43 TO 35 3/4" RS  
BLUE KEEL 6-3/4" x 40" TEE BAR  
7-40" BULB PLATE

FRAMES SPACED 22 1/2" APART STERN TO 5 & 87 TO STEM  
27" APART 5 TO 87

Approved for items enclosed only.

18.5.36



# RETAIN



© 2021

Lloyd's Register  
Foundation

W380-0024



SUNDERLAND

RETAIN

J. P. Austin & Son, Ltd.

war wreck

No. 341.Midship Section. ✓p.p. "borheath"

SUNDERLAND RPT. NO. 31946

See later

RETAIN



© 2021

Lloyd's Register  
Foundation