

# SHIP NO 559. MIDSHIP SECTION.

TO CLASS 100 A.I. AT LLOYDS. (WITH FREEBOARD)

DIMENSIONS 400'-0" L.B.P. x 55'-0" B.M. x 27'-6" D.M. TO SECOND DECK.  
x 35'-6" D.M. TO UPPER DECK.

SCALE 1/2" = 1 FOOT.

## SHEERS

FORWARD 7'-0"  
1/8 L. ABAFT STEM 8'-10 1/4"  
1/8 L. FORWARD OF STERN 1'-11 1/8"  
AFT 3'-6"

APPROX. U.D. TONNAGE 4170

## ERECTOR

COMPLETE SHELTER DECK  
WITH ONE TONNAGE OPENING.

D = 27.5 + 8.0 = 35.5  
L x D = 400 x 35.5 = 14200 1ST LONGT. NO.  
L x (B+D) = 400 x 88.5 = 35400 2ND " "  
d = 27.5 - 3.58 = 23.92

2ND LONGT. NO. = 35400

FORECASTLE 41.75 x 3/4 = 230

HOUSES 65 86 x 7.5 x 1/2 = 323

EQUIPMENT NO. = 35953

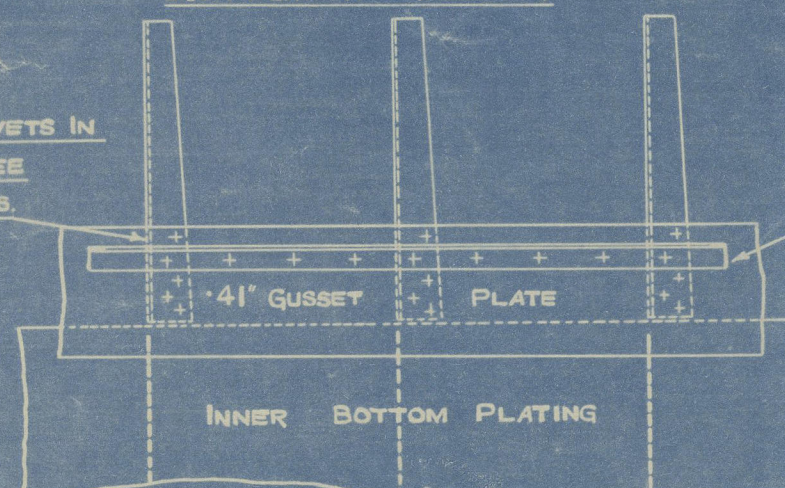
## EQUIPMENT

2	BOWER ANCHORS	63 3/4 CWTs	STOCKLESS
1	"	54 1/2 "	"
1	STREAM	17 1/2 "	EX. STOCK
270	FATHOMS	2 1/16	STUD CHAIN CABLE
90	"	4 3/4	STREAM STEEL WIRE
120	"	5"	TOWLINE STEEL WIRE
2 @ 90	"	8"	HEMP OR 2 3/4" WIRE HAWSERS
2 @ 90	"	7"	" OR 2 1/2" " WARPS

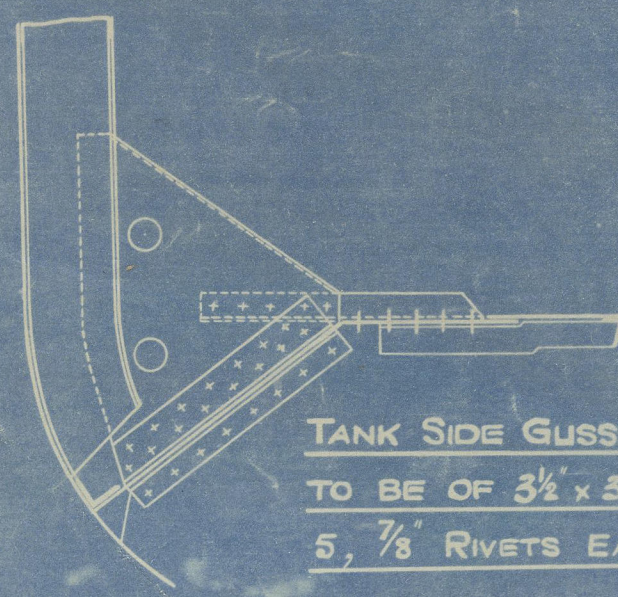
## RIVETING TO RULE

FLANGES OF FRAME KNEES TAPERED  
FROM 4 1/2" ON FLAT AT TANK SIDE TO  
2 1/2" ON FLAT AT FRAME BAR

5-7/8 RIVETS IN  
EACH KNEE  
AMIDSHIPS.



SCRAP PLAN SHOWING ARRANGEMENT OF  
CONTINUOUS GUSSET PLATE ALONG  
TANK SIDES.



TANK SIDE GUSSETS IN E & B SPACES  
TO BE OF 3 1/2 x 3 1/2 x 4 1/2 AS THUS WITH  
5, 7/8 RIVETS EACH WAY.

## FORECASTLE SCANTLINGS.

SIDE PLATING 41" STRINGER BAR 3 1/2 x 3 1/2 x 35"  
STRINGER PLATE 35" x 35"  
DECK PLATING 32" SHEATHED WITH 2 1/2" PITCH PINE.  
BEAMS (2 ROW SIZE) 9 1/2 x 3 1/2 x 46" B.A. REDUCED AT ENDS.



BRACKET FLOORS THUS WHERE SHOWN ON LONGITUDINAL PLAN.



"FOWBERRY TOWER"

Hawthorn Leslies 559

MID-SECTION AS BUILT

*S. S. Belmor*

NEWCASTLE ON TYNE.

Report No. 84420

W38-0077 (2/2)



© 2019

Lloyd's Register  
Foundation



ENCLOSURE TO

Mr BROWN.

34/02742.

FROM R. & W. HAWTHORN, LESLIE & CO. LTD.,  
HEBBURN-ON-TYNE.

W38-0077(112)