

MIDSHIP SECTION

S.S. N° 913

SCALE 1/2" = 1 FOOT.

TO CLASS 100 A.I. WITH FREEBOARD AT LLOYD'S SPECIAL SURVEY. COMPLETE SUPERSTRUCTURE.

VESSEL WITH TONNAGE OPENING.

DIMENSIONS: 355'-0" B.P. x 53'-0" M.D. x 25'-6" M.D. x SECOND DECK x 33'-6" M.D. TO UPPER DECK.

LLOYD'S NUMERALS.

FIRST LONGITUDINAL NUMBER $L \times D = 355.0 \times 25.5$	= 12897.5
SECOND LONGITUDINAL NUMBER $L \times (2+D) = 355.0 \times (53.0 + 25.5)$	= 33302.5
D MOULDED DEPTH	= 53.5
D TO UPPER DECK = $355.0 \div 53.5$	= 11.5
$D = 33.5 - (2.0 + 4.0)$	= 21.5

EQUIPMENT NUMBER.

SECOND LONGITUDINAL NUMBER $355.0 \times (53.0 + 25.5)$	= 33302.5
FORECASTLE $32.0 \times 6.0 \times 7/8$	= 144.0
MIDSHIP CASING & SIDEHOUSE $57.0 \times 7.0 \times 1/2$	= 199.5
SALOON HOUSE $22.5 \times 8.0 \times 1/2$	= 90.0
EQUIPMENT NUMBER	= 33736.0

EQUIPMENT.

2 BOWERS ANCHORS 60 CWT. EACH STOCKLESS.	
1 BOWER ANCHOR 50 1/2 CWT. STOCKLESS.	
1 STREAM ANCHOR 10 1/2 CWT. EX-STOCK.	
270 FATHOMS 2 1/2" STUD CHAIN CABLE 645 1/2 CWT. OR 1 1/2" TAYCO CABLE.	
120 FATHOMS 1 1/2" STREAM CHAIN OR 4 1/2" FLEXIBLE STEEL WIRE 6" x 12"	
120 FATHOMS 4 1/2" FLEXIBLE STEEL WIRE 6" x 12"	
2 HAWERS 90 FATHOMS 8" HEMP OR 2 1/2" FLEXIBLE STEEL WIRE 6" x 12"	
2 WARPS 90 FATHOMS 7" HEMP OR 2 1/2" FLEXIBLE STEEL WIRE 6" x 12"	

-RIVETING NOTE-

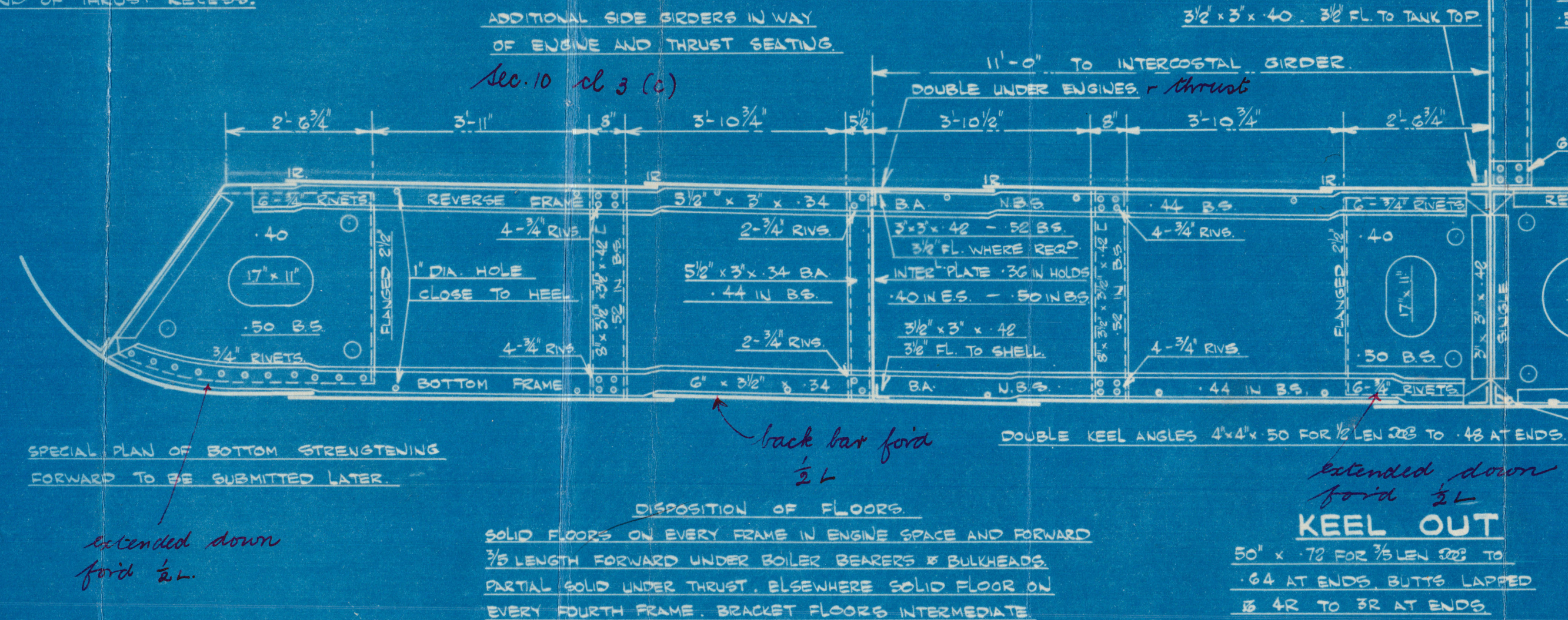
RIVETS IN FRAMES TO FLOORS AND CROSS TIE PLATES IN AFT PEAK SPACED 3 DIAS. APART CR TO CR.
RIVETS IN FRAMES TO SHELL AT FLAT OF DOUBLE BOTTOM FOR HALF LENGTH FOR SPACED 5 1/2 DIAS. (TWO COMPLETE ROWS).
RIVETS IN FRAMES TO FLOORS AT FLAT OF DOUBLE BOTTOM FOR HALF LENGTH FOR SPACED 5 1/2 DIAS. (TWO COMPLETE ROWS).
RIVETS IN SIDE FRAMES TO SHELL SPACED 6 DIAS. APART, 5 1/2 DIAS. APART IN WAY OF FORE & AFT PEAK TANKS AND DEEP FRAMING FORWARD.
RIVETS IN BOTTOM FRAMES TO SHELL AFT HALF LENGTH FORWARD SPACED 7 DIAS. APART CR TO CR.
RIVETS IN 32 BUTTS OF OUTSIDE PLATING AND OF DECK STRINGER PLATES SPACED 3 1/2 DIAS. APART CR TO CR.
RIVETS IN 48 BUTTS OF OUTSIDE PLATING AND OF DECK STRINGER PLATES SPACED 4 DIAS. APART CR TO CR.
RIVETS IN SEAMS OF SHELL PLATING, DECK PLATING AND INNER BOTTOM PLATING AS PER TABLE 40.
RIVETS IN BUTTS OF DECK PLATING, INNER BOTTOM AND MARGIN PLATING SPACED 4 DIAS. APART CR TO CR.
RIVETS IN SEAMS AND BUTTS OF BULKHEAD AND TUNNEL PLATING, MARGIN ANGLES & WEATHER DECK STRINGER ANGLES AND BULKHEAD FRAMES TO BULKHEAD SPACED 4 1/2 DIAS. APART CR TO CR.
RIVETS IN FLAT KEEL ANGLES, VERTICAL ANGLES CONNECTING FLOORS TO CENTRE GIRDER AND SHELL FLANGE OF WATERTIGHT BULKHEAD FRAMES SPACED 5 DIAS. APART CR TO CR.
RIVETS IN FRAMES TO FLOOR AFT 1/2 LEN FORWARD, REVERSE FRAMES TO FLOORS AND INNER BOTTOM PLATING, VERTICAL ANGLES TO FLOORS AND SIDE GIRDERS, IN BULKHEAD STEPPERS (EXCEPT PEAK BULKHEADS) AND IN DECK PLATING TO BEAMS ON EVERY FRAME SPACED 7 DIAS. APART CR TO CR.
RIVETS IN CENTRE GIRDER TOP ANGLES SPACED 7 DIAS. APART CR TO CR. NON-WATERTIGHT.
RIVETS IN CENTRE GIRDER TOP ANGLES SPACED 5 DIAS. APART CR TO CR. WATERTIGHT.

STEERPOST 1" - 10" x 7"
RUDDER POST 1" - 10" x 7"
STEM 1" - 9" x 2"

OWNERS INCREASES OVER RULES.
TANK TOP PLATING IN E & B ROOM AS OVER RULE
AND CARRIED TO AFT END OF THRUST RECESS.

ADDITIONAL SIDE GIRDERS IN WAY OF ENGINE AND THRUST SEATING.

See 10. cl 3 (a)



SPECIAL PLAN OF BOTTOM STRENGTHENING FORWARD TO BE SUBMITTED LATER.

extended down from 2L.

DISPOSITION OF FLOORS.

SOLID FLOORS ON EVERY FRAME IN ENGINE SPACE AND FORWARD 3/8 LENGTH FORWARD UNDER BOILER BEARERS & BULKHEADS. PARTIAL SOLID UNDER THRUST. ELSEWHERE SOLID FLOOR ON EVERY FOURTH FRAME. BRACKET FLOORS INTERMEDIATE.

DOUBLE KEEL ANGLES 4" x 50 FOR 1/2 LEN 28 TO 48 AT ENDS.

KEEL OUT

50" x 72 FOR 1/2 LEN 28 TO 48 AT ENDS. BUTTS LAPPED 32. 16 42 TO 32 AT ENDS.

SCANTLINGS AND DETAILS OF CONSTRUCTION NOTED HEREON ARE SUBMITTED ON THE UNDERSTANDING THAT THEY ARE THE MINIMUM WHICH WILL BE ACCEPTED FOR CLASS, ERRORS AND OMISSIONS EXCEPTED.

UPPER DECK PLATING TO BE INCREASED AFT 32 FOR 1/2 LEN 28 TO 34 AT ENDS. BUTTS LAPPED 32 TO 12 AT ENDS. SEE PROFILE & DECK PLAN.

UPPER DECK BEAMS ON EVERY FRAME. 7" x 3 1/2" x 35 BA N.B.S. 13'-0" SPAN. 7" x 3 1/2" x 40 BA N.B.S. 15'-0" SPAN. FOR BEAMS AT ENDS SEE PROFILE & DECK PLAN.

STRINGER PLATE TO RULE 50" x 57 FITTED 66" x 57 FOR 1/2 LEN 28 TO 38" x 48 AT ENDS. BUTTS LAPPED 32 TO 22 AT ENDS. (NOT EXC. 48) STRINGER ANGLE 5" x 5" x 57 FOR 1/2 LEN 28 TO 38" x 3 1/2" x 48 AT ENDS.

FORECASTLE. STRINGER PLATE 34" x 34. BUTTS 12. STRINGER ANGLE 3 1/2" x 3 1/2" x 34. DECK PLATING 30 UNHEATED. BUTTS LAPPED 32. SIDE PLATING 38 BEAMS & BUTTS 12. BEAMS ON EVERY FRAME AS PER PROFILE & DECK PLAN.

5' TUMBLE HOME AT UPPER DECK.

'J' OUT

TO RULE 50" x 57 FOR 1/2 LEN 28 FITTED 70 1/2" x 57 FOR 1/2 LEN 28 TO 48 AT ENDS. BUTTS LAPPED 32. 48 FOR 1/2 LEN 28 TO 32 AT ENDS.

'H' IN

TO RULE 50" x 57 FOR 1/2 LEN 28 FITTED 80 1/2" x 57 FOR 1/2 LEN 28 TO 48 AT ENDS. BUTTS LAPPED 32. 48 FOR 1/2 LEN 28 TO 32 AT ENDS.

'G' OUT

52" x 56 FOR 1/2 LEN 28 TO 48 AT ENDS. BUTTS LAPPED 32.

SIDE SHELL 57 FOR 10% ABAFT RULE POSITION OF COLLISION BULKHEAD.

'F' IN

82 1/2" x 56 FOR 1/2 LEN 28 TO 48 AT ENDS. BUTTS LAPPED 32.

'E' OUT

81 1/2" x 56 FOR 1/2 LEN 28 TO 48 AT ENDS. BUTTS LAPPED 32. 18 1/2" RIVETS - 18 1/2" RIVETS IN WAY OF DEEP FRAMING.

BULGE KEEL. 6" x 6" x 50 TEE BAR 6" x 40 BULGE PLATE FORMING KEEL.

MARGIN PLATE TO RULE 35 1/2" FITTED ABOUT 45" x 50 = 58 IN B.S. BUTTS LAPPED 32 THROUGHOUT.

APPROVED

LLOYD'S REGISTER OF SHIPPING

DATE 26.5.37

W379-0095

LITHGOWS LTD

1

No 913

MIDSHIP

SECTION ✓

S.S. "COULTARN"

GRK. 1ST ENTRY REPORT N^o 20634.

RETAIN

RETAIN



© 2020

Lloyd's Register

W379-0015 Foundation