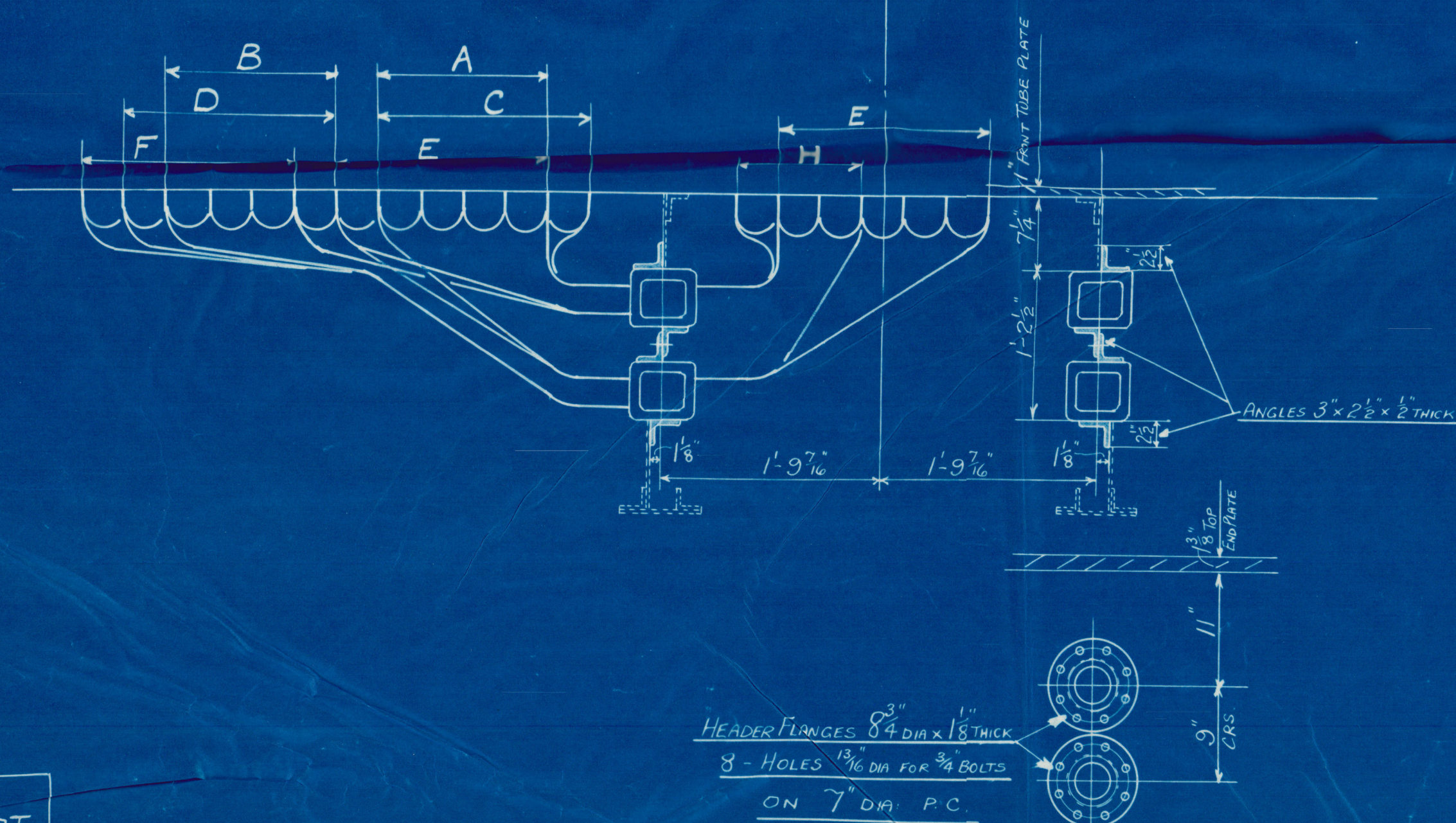
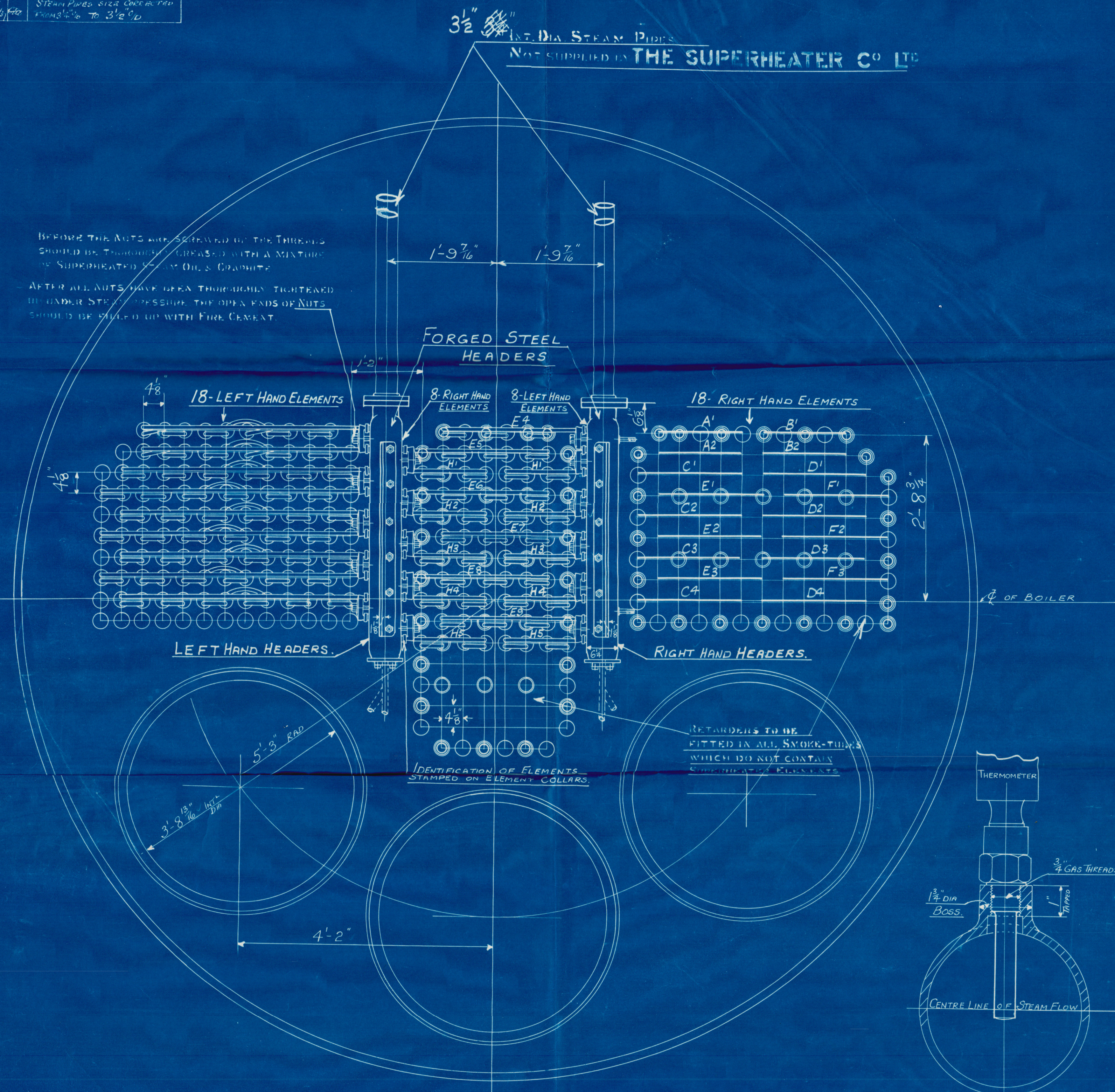


REVISION		REMARKS
A	24/10/60	STEAM PIPES SIZE CORRECTED FROM 3 1/4" TO 3 1/2"



IT IS IMPORTANT THAT THE STEM OF BOTH, THE LONG DISTANCE, AND STRAIGHT TYPE THERMOMETERS BE IMMERSSED INTO THE CENTRE OF STEAM FLOW- AS SHOWN ABOVE -

THE THERMOMETER ON THE BOILER SHOULD BE FITTED TO INDICATE THE TEMPERATURE OF THE STEAM LEAVING THE SUPERHEATER BEFORE MIXING

NUMBER OF BOILERS 2 PER SHIP (COAL FIRED - FORCED DRAUGHT)  
 WORKING PRESSURE = 220 LBS PER SQ IN  
 GRATE AREA = 51.75 # = 103.5 #  
 HEATING SURFACE = 2860. # = 5720 #

TO PASS (SEE TABLE BELOW) SURVEY!  
TEST PRESSURE 660 LBS PER 0"

ORDER NO	ENGINE NO	SURVEY
3990 1/2	457	BRITISH CORPORATIO
"	458	" " " " "
12031 1/2	459	LLOYDS

THE DESIGN SHOWN ON THIS DRAWING IS PROTECTED BY PATENTS OWNED AND CONTROLLED BY THE SUPERHEATER CO LTD BUSH HOUSE LONDON W.C.2	
FINAL ARRANGEMENT OF SUPERHEATER TITLE "S" TYPE	
REF. (NO)	DRAWING NO
9990 MX 1000 P/1007	MN11400A
RANKIN & BLACKMORE LTD ENG: N <sup>OS</sup> 457 & 458.	
ENGINE N <sup>O</sup> 459.	





W379 - 0089



Kind arrangement of Superintenders  
for  
Messrs. Lithgow & Co. Ltd  
No 91 &  
"Don't know"



© 2020

Lloyd's Register  
Foundation