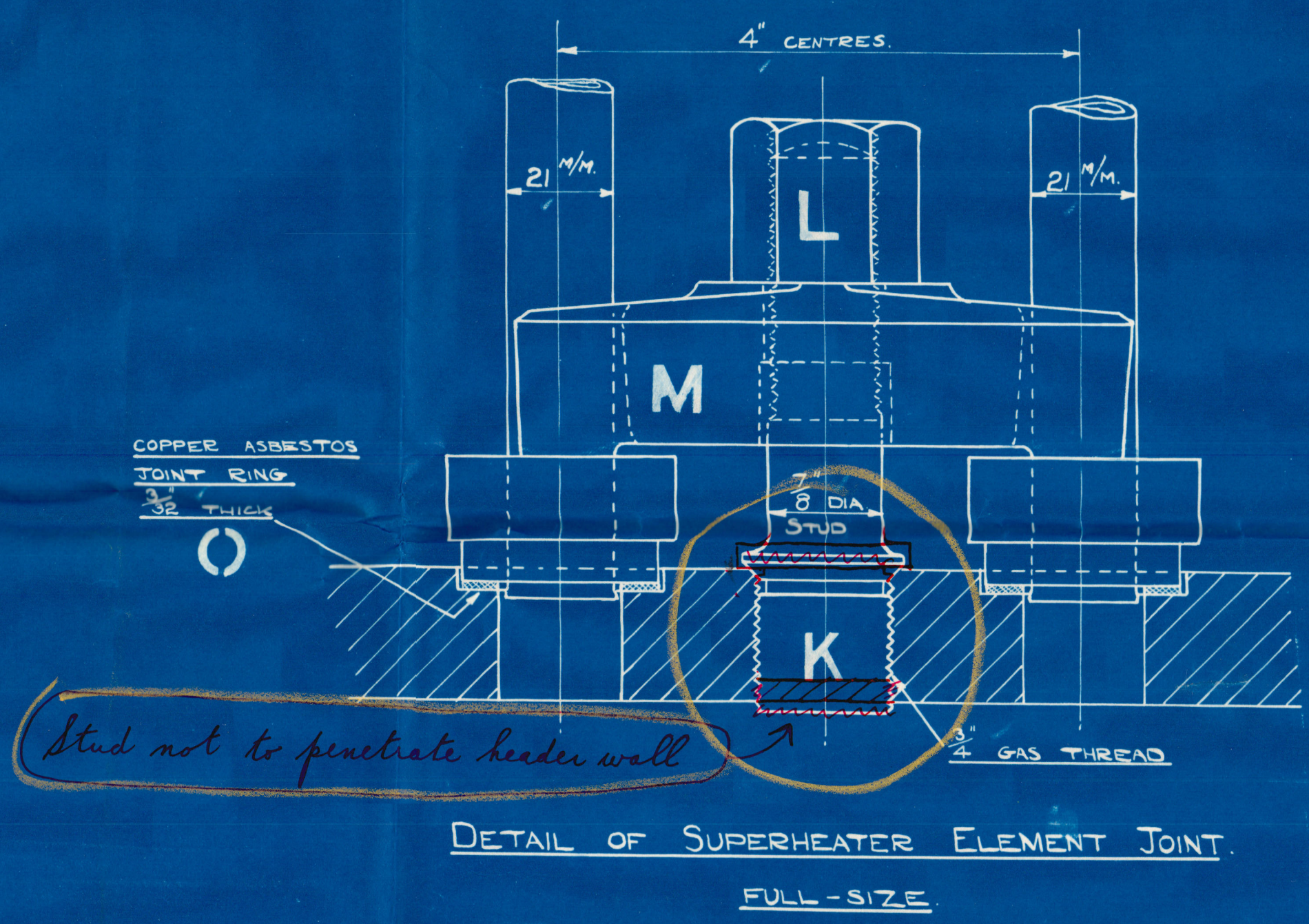
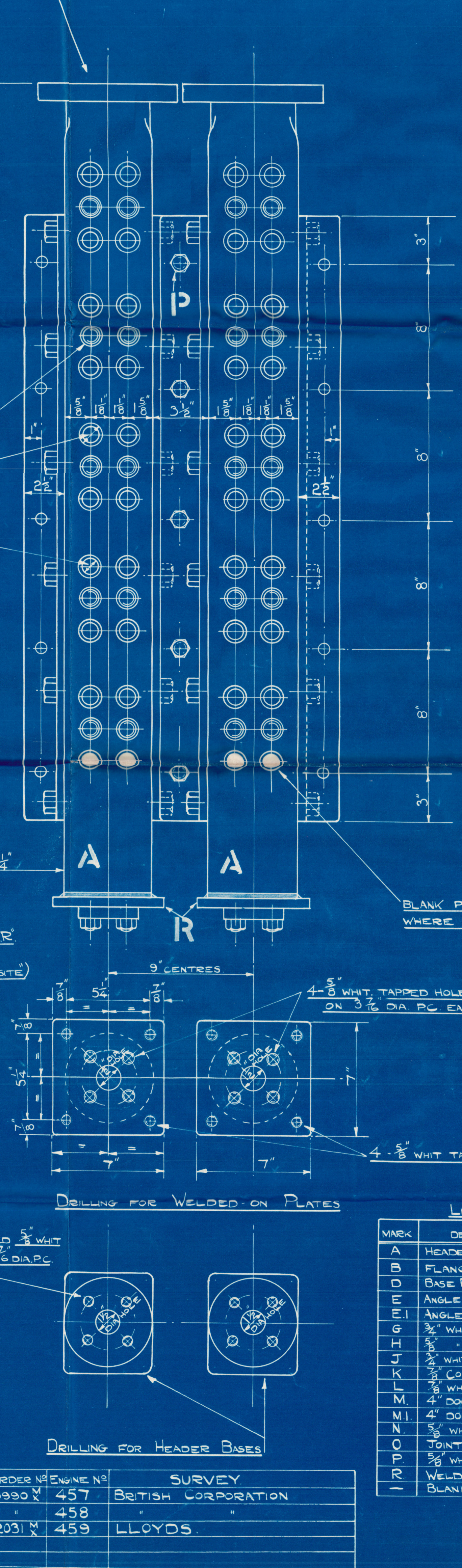
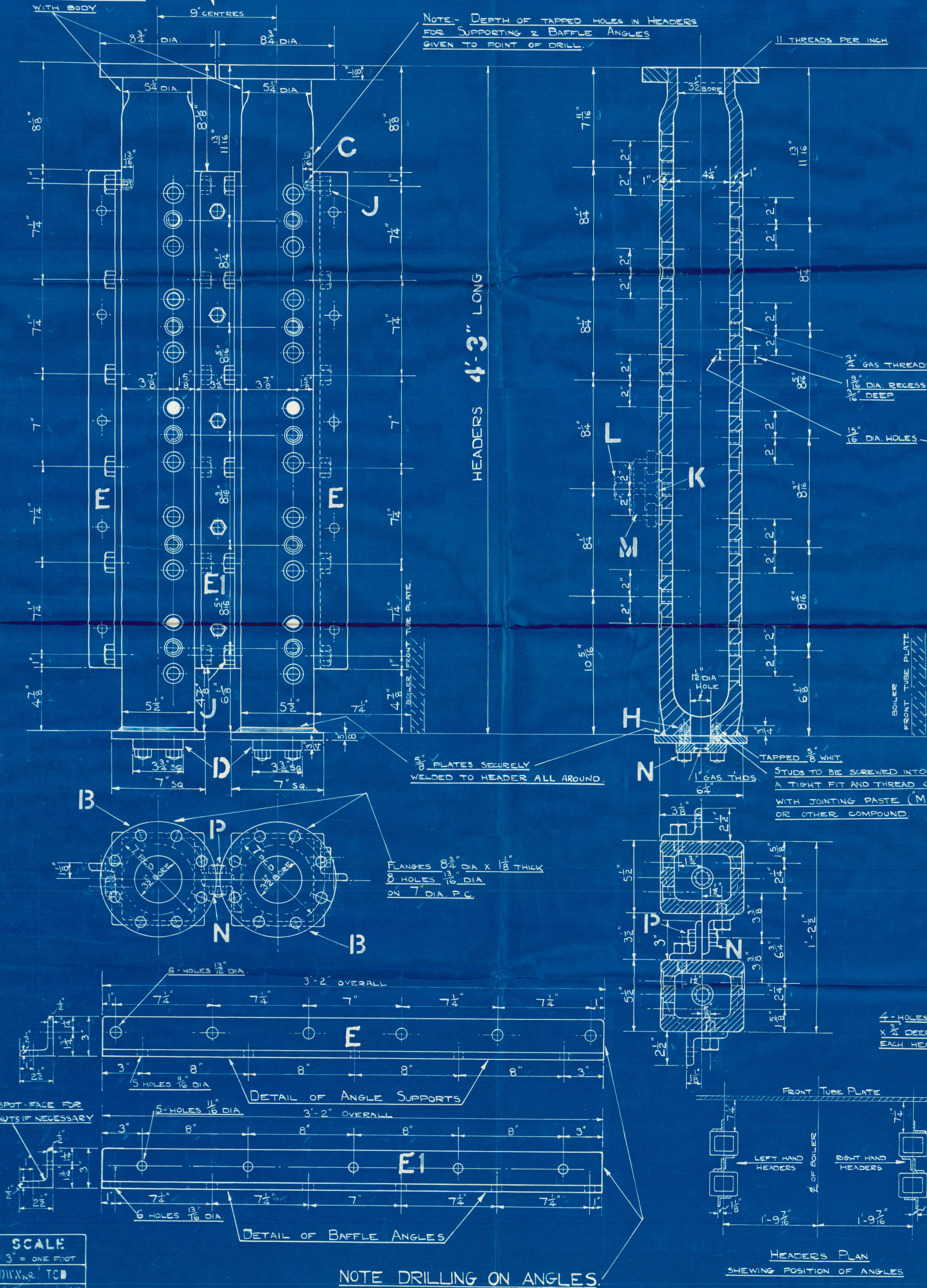


REVISION	REMARKS
A	ALL HOLES IN PLATES TO BE 5/8" WHIT TAPPED

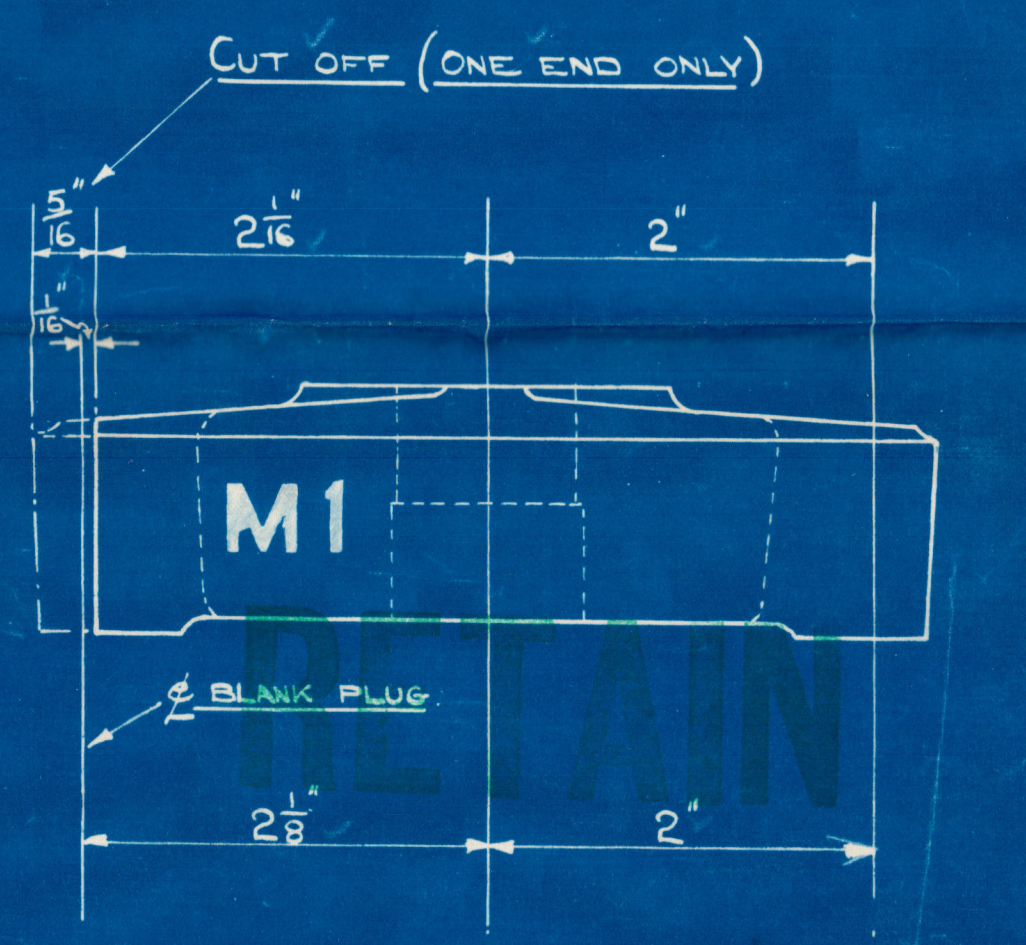
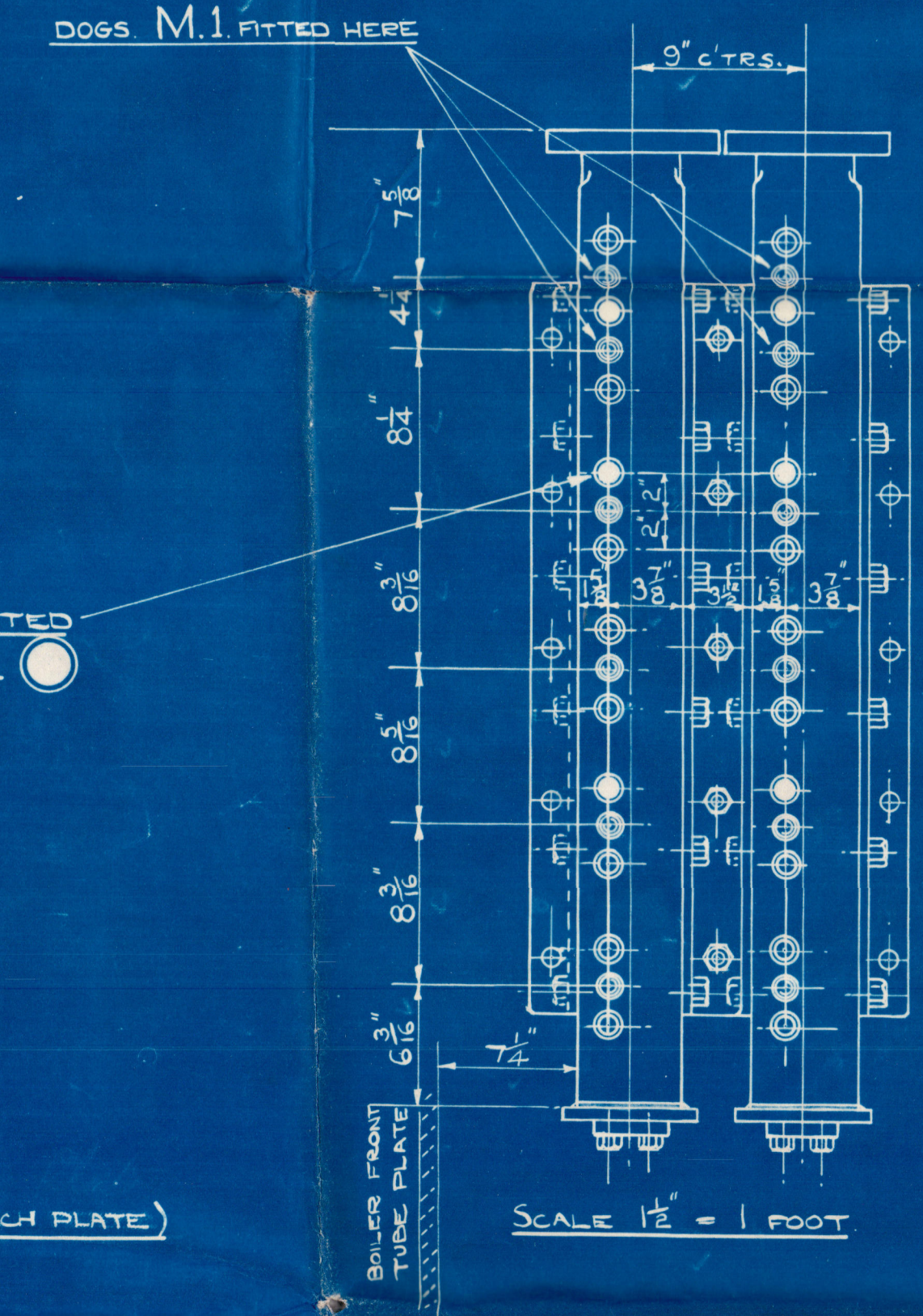
DRILLING FOR CENTRE BOX
LEFT HAND HEADERS ONLY

LEFT HAND HEADERS DRAWN

DRILLING FOR WING BOX
RIGHT AND LEFT HAND HEADERS



DRILLING FOR CENTRE BOX
RIGHT HAND HEADERS ONLY



TO PASS SURVEY (SEE BELOW)

WORKING PRESSURE 220 LBS. PER SQ. IN.
TEST " 660 LBS. PER SQ. IN.

NOTE:- EACH PAIR OF HEADERS TO HAVE "HAND" PAINTED ON (WHITE PAINT) TO DENOTE POSITION IN SMOKE BOX SEE ARRANGEMENT DRG.

LIST OF MATERIAL FOR ONE BOILER

MARK	DESCRIPTION	NO OFF	MATERIAL	REMARKS
A	HEADERS	4	STEEL FORGINGS	1 PAIR RH & 1 PAIR LH
B	FLANGES	4	M.S.	8 3/4" DIA X 1 1/8" THICK
D	BASE PLATES (SPECIAL)	4	M.S.	DRG. NO. MM 2120
E	ANGLE SUPPORTS	4	M.S.	3" x 2 1/2" x 3/2" LG.
E1	ANGLE BAFFLES	4	M.S.	3" x 2 1/2" x 3/2" LG.
G	3/4" WHIT STUDS	48	M.S.	DRG. NO. MD 217
H	3/8" WHIT STUDS	16	M.S.	" " MD 2152
J	3/4" WHIT NUTS	48	STEEL	" " ME 62
K	3/8" COLLAR STUDS	62	M.S.	" " MD 280A
L	3/8" WHIT NUTS	62	STEEL	" " ME 65
M	4" DOGS	58	DRG. FORGING	" " MC 1040
M1	4" DOGS (CUT TO SUIT)	4	"	" " MC 1040
N	3/8" WHIT NUTS	26	STEEL	" " ME 61
O	JOINT RINGS	122	COPPER ASBESTOS	" " MG 371
P	3/8" WHIT BOLTS	10	M.S.	" " MD 283A
R	WELDED ON PLATES	4	M.S.	7" x 7" x 3/8" THICK
-	BLANK PLUGS	18	M.S.	DRG. NO. MD 270

DRILLING FOR HEADER BASES

ORDER NO	ENGINE NO	SURVEY
9990	457	BRITISH CORPORATION
1203	458	"
1203	459	LLOYDS.

sa
9/9/37

THE SUPERHEATER CO LTD
BUSH HOUSE LONDON WC 2
TITLE HEADERS
ORDER Nos REF (10) DRAWING Nos
12031.MX 9990.MX 9990.MX 9990.MX
RANKIN & BLACKMORE LTD.
ENC N^{OS} 457 & 458
ENGINE N^O 459
MA S470A

SCALE
3" = ONE FOOT
DWNR TCB
24/7/37

NOTE DRILLING ON ANGLES.

HEADERS PLAN
SHEWING POSITION OF ANGLES

GEN BOX INC

W371-0088

R

~~Underwritten Shares~~
RETAIN
~~for~~

~~Misses Jethgows Ltd~~
~~Yard No 913~~
~~s/s Coultern~~

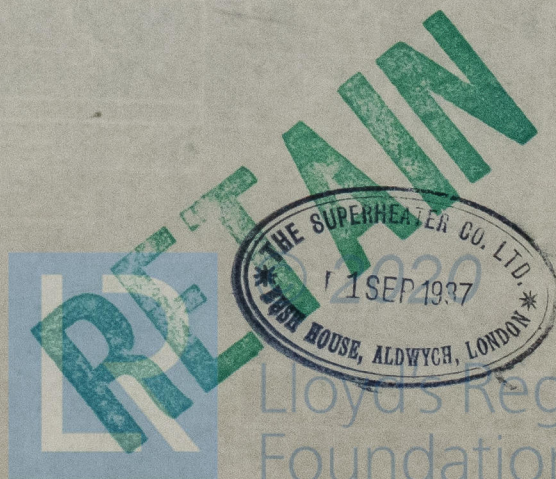
X



© 2020

Lloyd's Register
Foundation

W379-0088



Lloyd's Register
Foundation