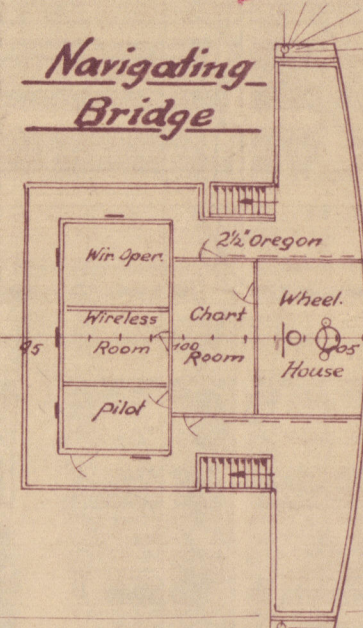
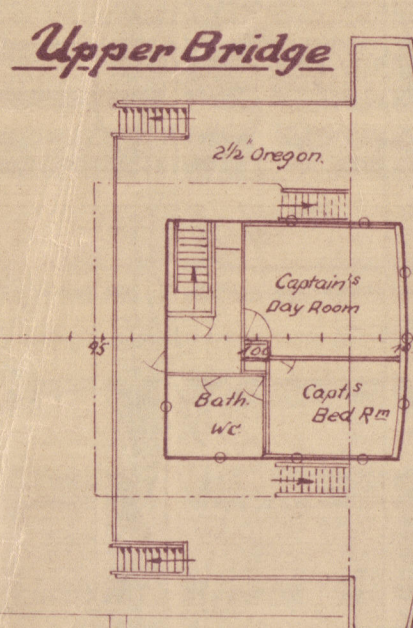
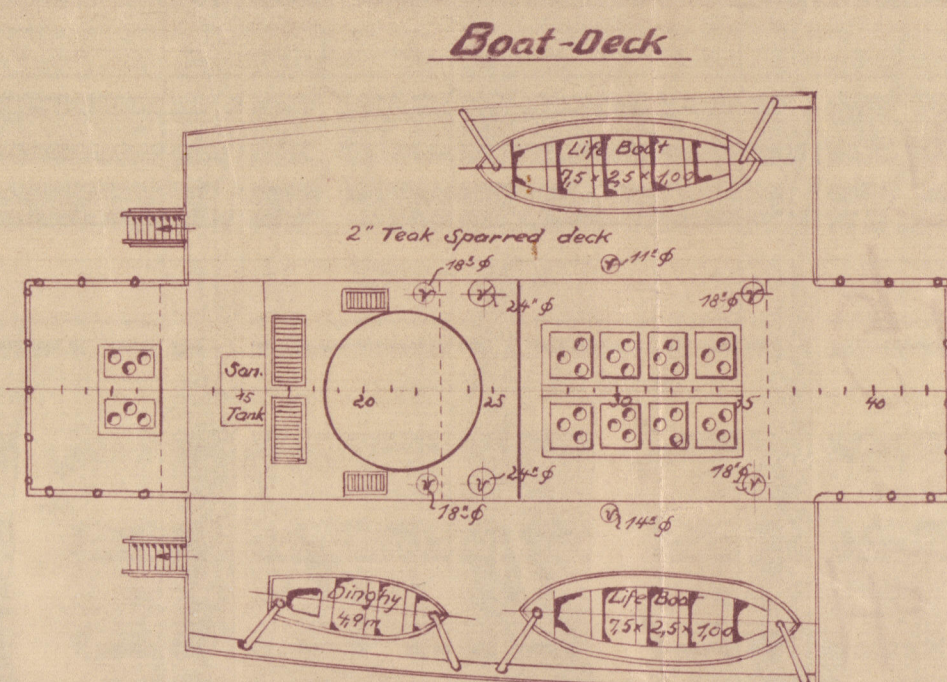


1:200

Vessel as built

AB



Dimensions:

Length betw. Perp.	395'-0" = 120,344m
Breadth moulded	55'-0" = 16,764m
Depth moulded	27'-0" = 8,229m
Draft, loaded	22'-5 3/4" = 6,853m
Deadweight	7275 tons
Engine output	2200 BHP
Speed trial	12 Knots
— service	11 —

RETAIN

RETAIN

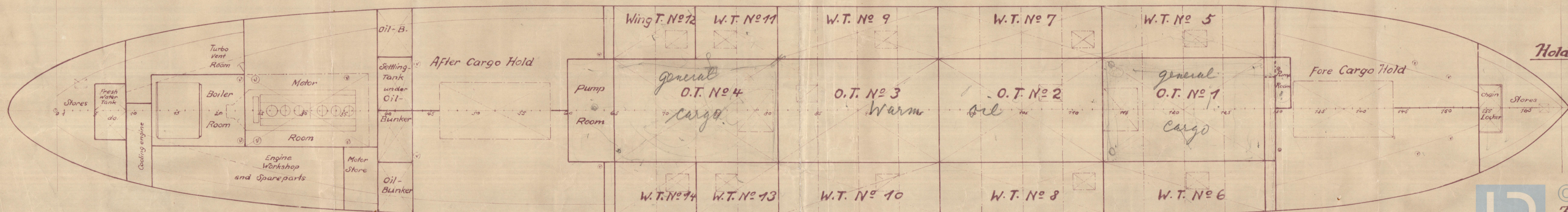
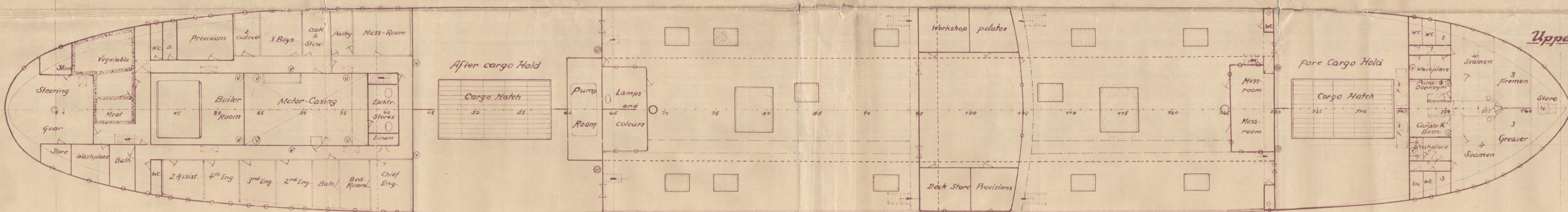
General
Arch.

Poop Deck

M/V CONGONIAN

Bridge Deck

Forecastle Deck



M. V. "CONGONIAN"

HOWALDTSWERKE 740

GENERAL ARRANGEMENT
REFERENCE PLAN

W378-0073



© 2019

Lloyd's Register
Foundation