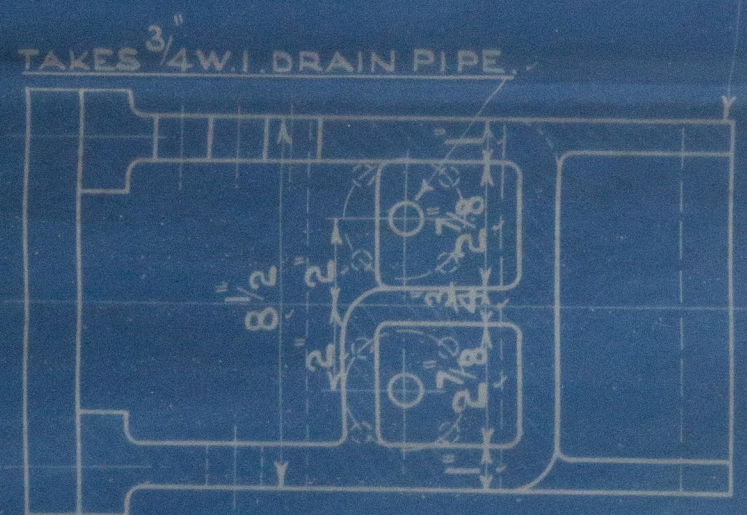
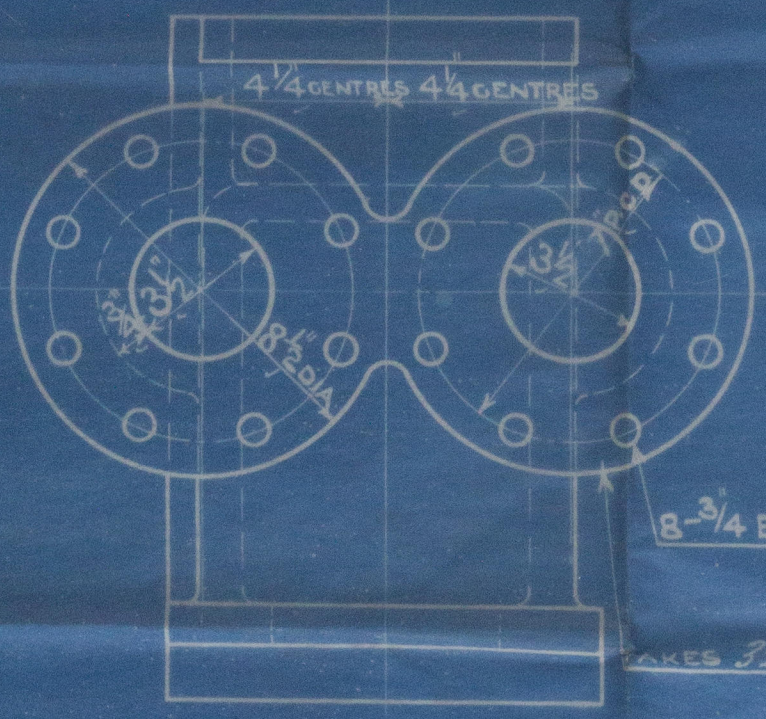


SECTION THRO' C.D.

SECTION THRO' A.B.

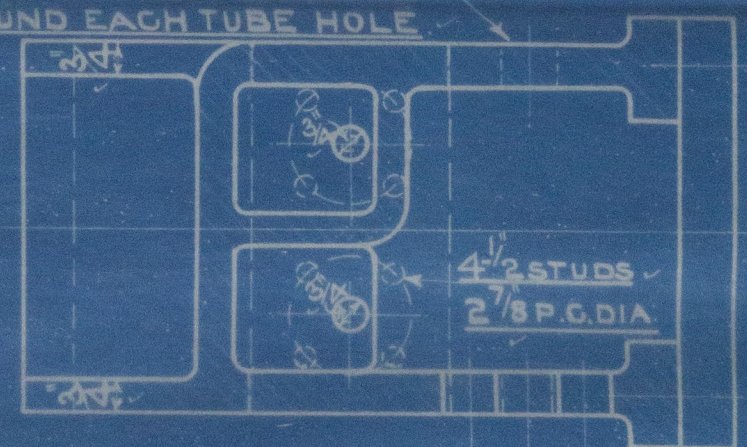


SECTION THRO' E.F.

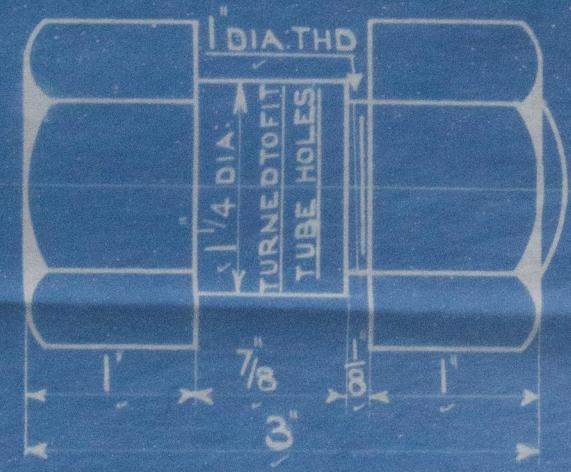
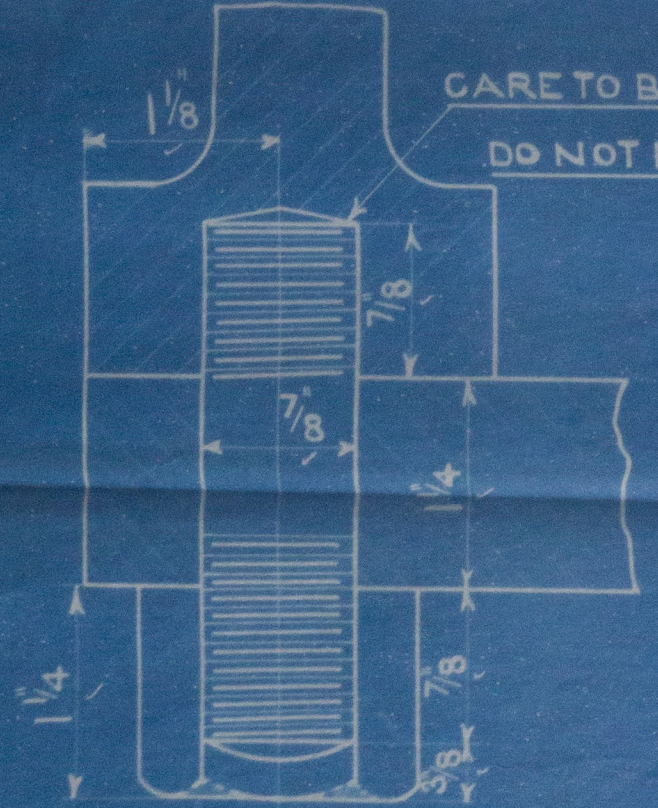


PLAN.

HOLES FOR TUBES 1 1/4 DIA.
TO BE KNIFED OUT 2\"/>



SECTION THRO' G.H.



PLUGS FOR HEADER

DESCRIPTION	MAT'L	REMARKS	NUMBER REQ'D WORKING	SPARE
HEADER (AS DRAWN)	C. ST.		5	—
" (TO OPPOSITE HAND)	C. ST.		5	—
" COVER	Mild STEEL		10	—
STUDS + NUTS	ST. & W.I.		AS REQ'D	—
PLUGS + NUTS	ST. & W.I.		—	34

WORKING PRESSURE 200 LBS/SQ. IN.
TEST " 600 " " "

TO LLOYDS SURVEY.

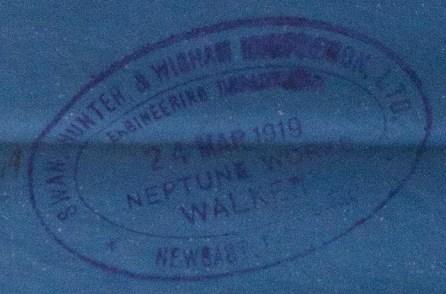
STUDS + NUTS FOR COVER

TRACING No 8430

LL
C.M.
all
24/5/19

SUPERHEATER

SCALE 3"=1 FOOT



NUMBER	DATE
O.N. 943	24/5/19
O.N. 953	24/5/19



© 2020
Lloyd's Register
Foundation

Eng No 1208

Superheaters

✓ Heaters. ✓

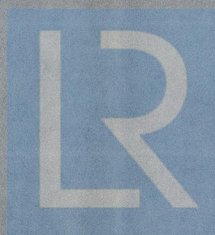
M. V. ATHELRING
NEWCASTLE ON TYNE.

Report No. 80205

SHIP. NO 1285

RETAIN

RETAIN



© 2020

Lloyd's Register
Foundation

W375-0231