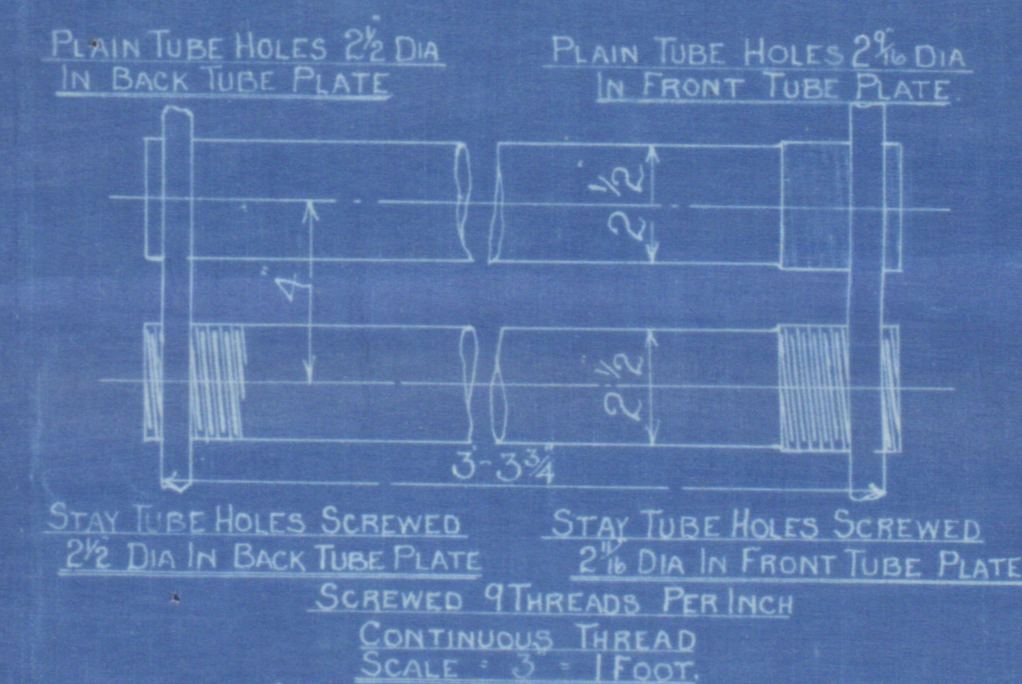
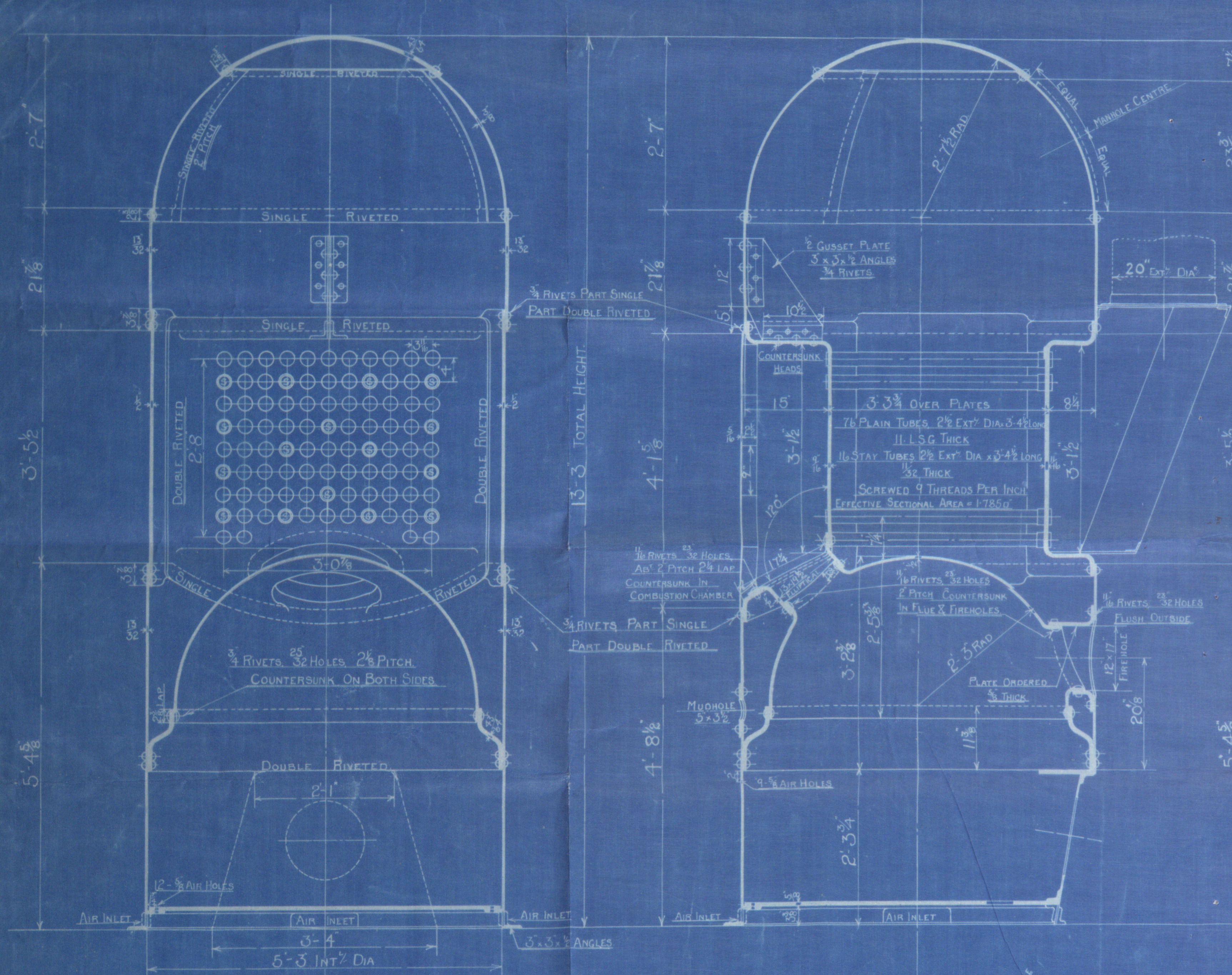


COCHRAN PATENT VERTICAL MULTITUBULAR BOILER

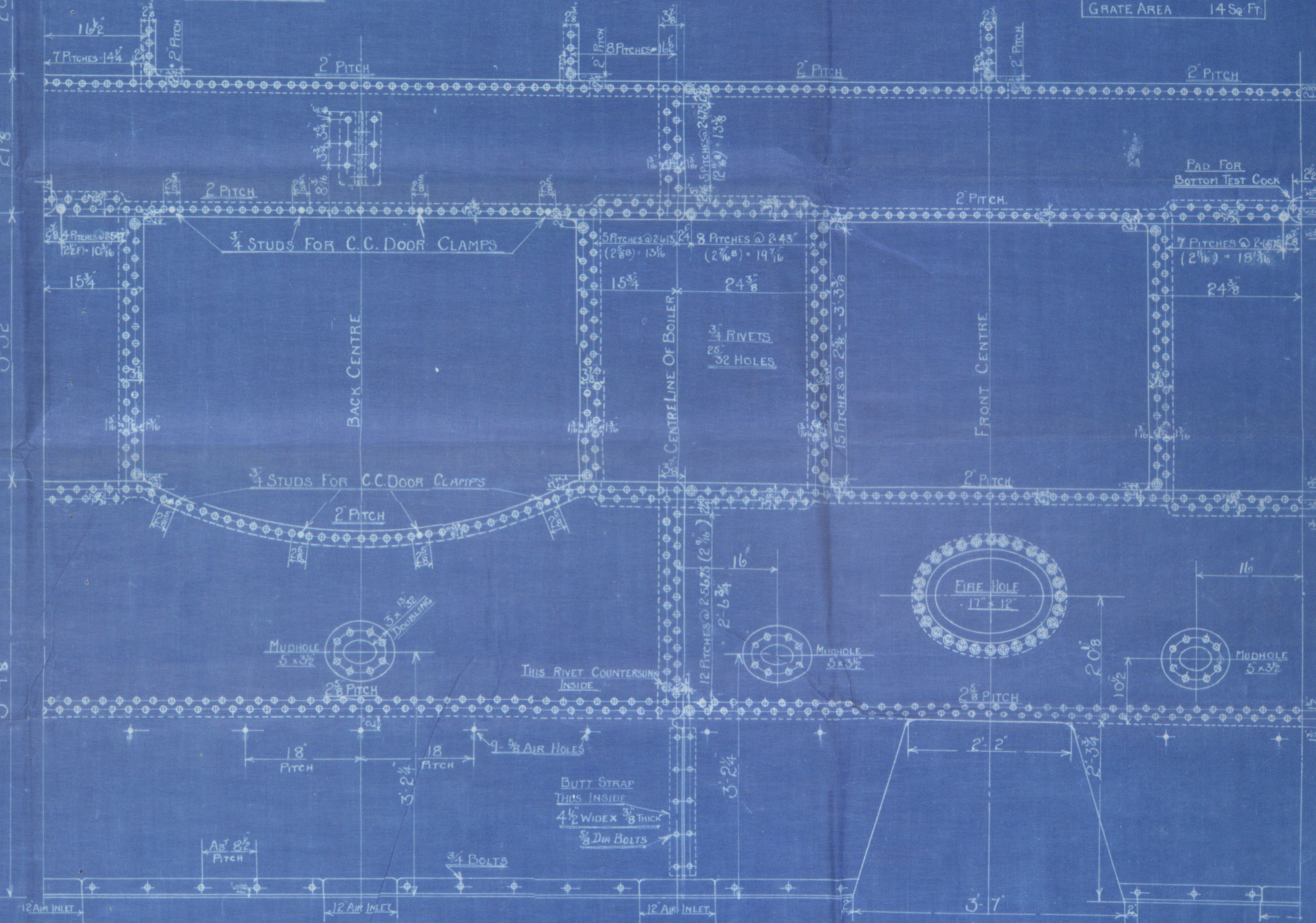
N.R.

HORIZONTAL FLUE TUBES



COCHRAN & CO ANNAN LD.
ENGINEERS & BOILERMAKERS
ANNAN, SCOTLAND

HEATING SURFACE.	
TUBES	1975 Sq Ft
PLATE	535 Sq Ft
TOTAL	2508 Sq Ft
GRATE AREA	14 Sq Ft



LLOYDS

PLATE	25085-78125 x 100	= 69.5%
RIVETS	100(23 x 47337 x 2 x 1)	= 72.8%
FRONT TUBE PLATE	4-25 x 100	= 34.4%
BACK TUBE PLATE	4-25 x 100	= 37.6%
SHELL	(13-2) x 28 x 1/2	= 117.2 LBS
FRONT TUBE PLATE	(22-2) x 25 x (4-25) x 100	= 105.7 LBS
BACK TUBE PLATE	(18-2) x 25 x (4-25) x 100	= 110.2 LBS
FURNACE	275 (16-1)	= 153 LBS
COEE RING	140 (21.5-1)	= 103.9 LBS

Similar to No 12709 approved 10.3.21 for Boilers Nos 8755 & 8756 except these Boilers have extended support for Oil Firing.

PATENT BOILER NOS 8752-8753-8754

5'-3" x 13'-3" x 250 lb x 100 LBS W.P.

SCALE: 1 INCH TO 1 FOOT

SIEMENS MARTIN MILD STEEL PLATES

TENSILE TESTS

PLATES NOT EXPOSED TO FLAME OR FLANGED..... 28 TO 32 TONS
PLATES EXPOSED TO FLAME OR FLANGED..... 26 TO 30 TONS

DRAWING NO E 14395-12687

SURVEY-LLOYDS

R

✓ COCHRAN & CO., ANNAN, LD. ✓

Boiler No. 8952

Drawing No. 12689

100 lbs per sq inch

Similar to drawing

Nº 12709 except
extended arches.

GLASGOW REPORT No.

42285

"Araby"

RETAIN

RETAIN



© 2020

Lloyd's Register
Foundation

W375-0176