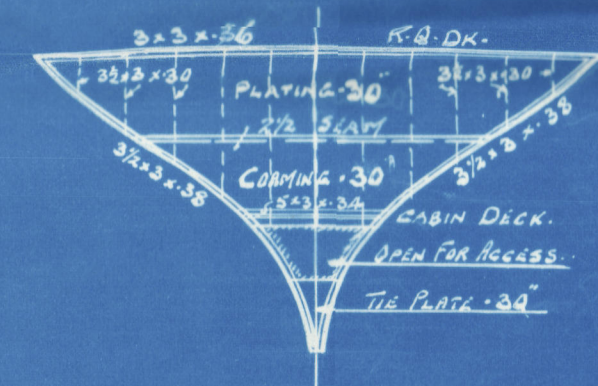


8. P. AUSTIN & SON, LTD.  
SHIPBUILDERS & REPAIRERS,  
WEAR DOCK YARD,  
SUNDERLAND.  
30th August 1933  
Reference No. 328

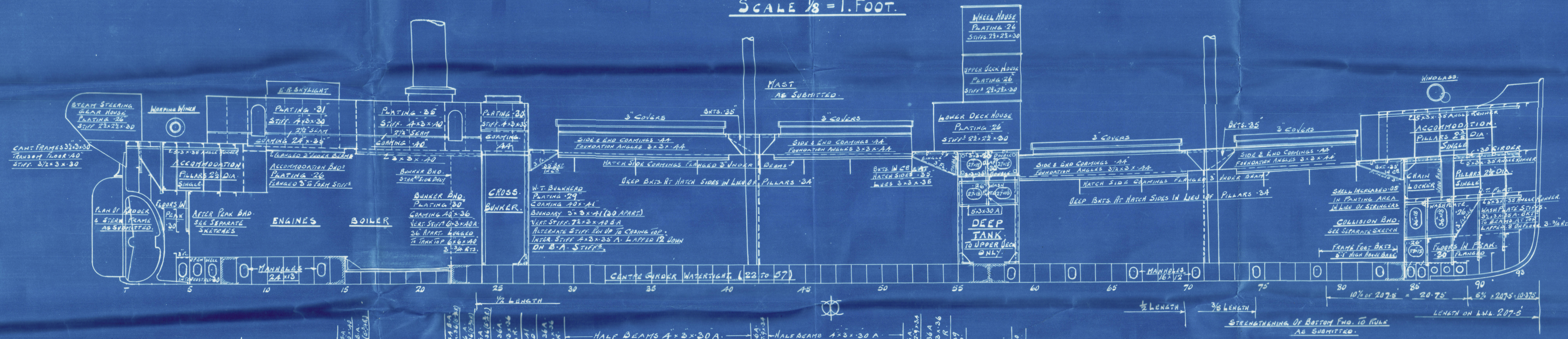
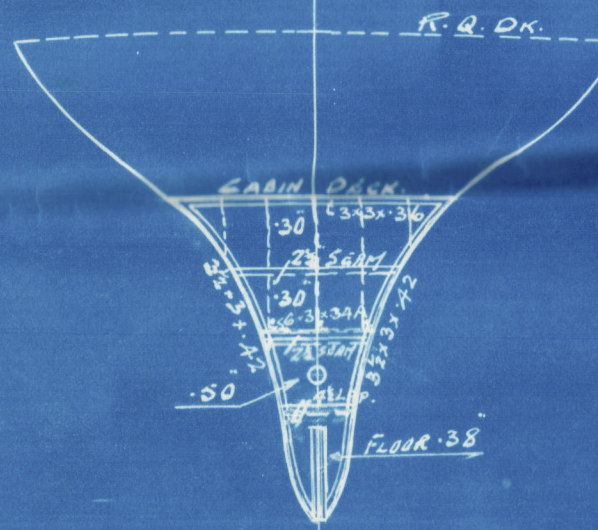
# S.S. "CORHAVEN". PROFILE AND DECK.

SCALE 1/8" = 1 FOOT.

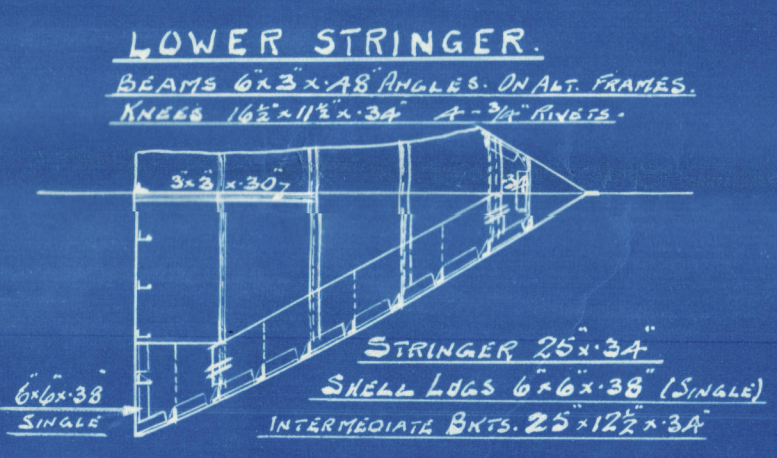
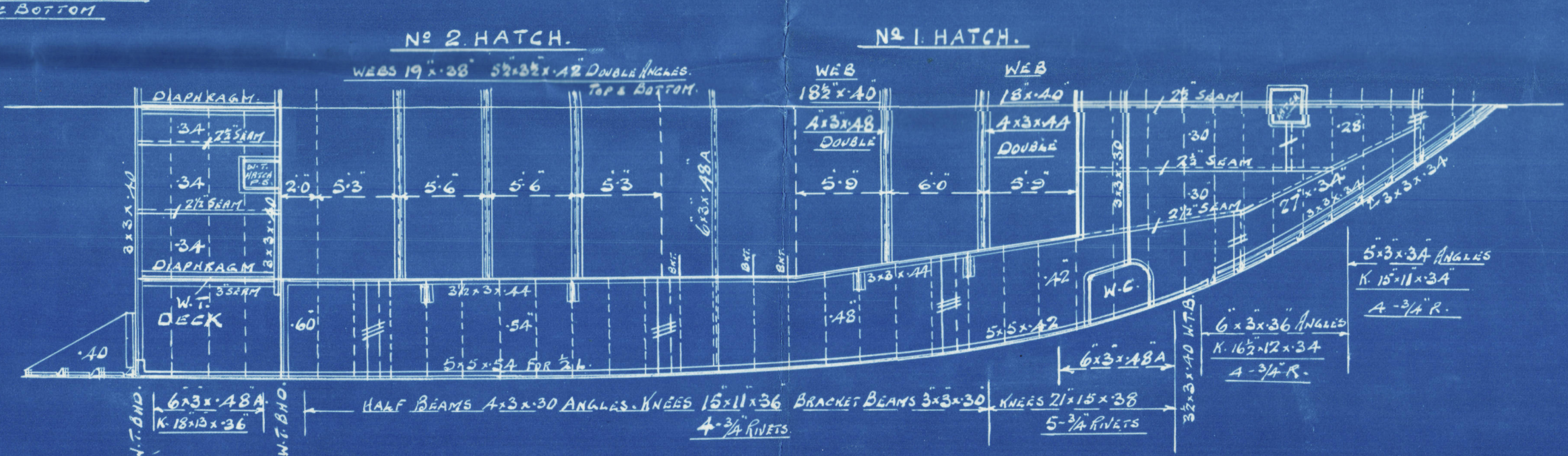
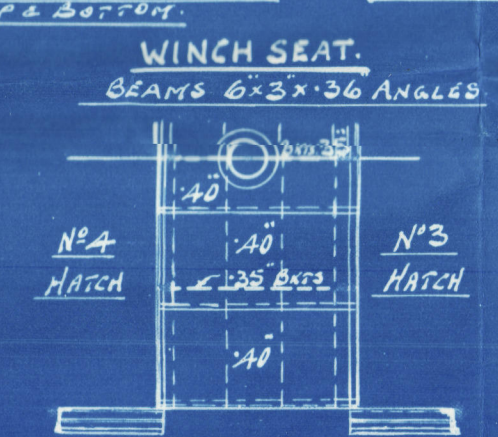
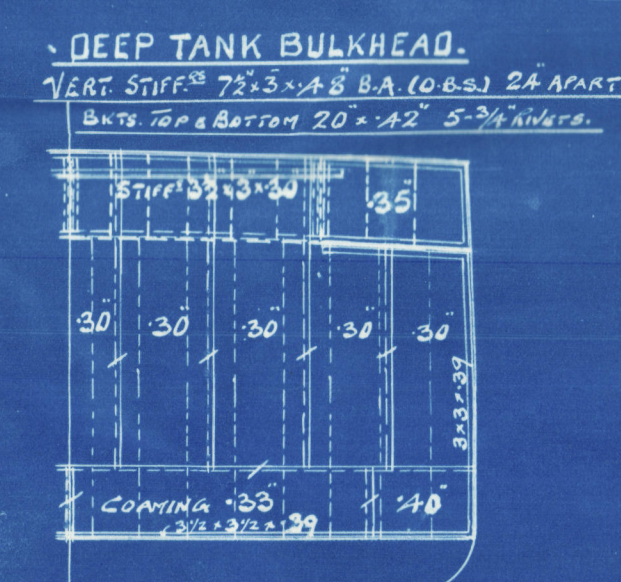
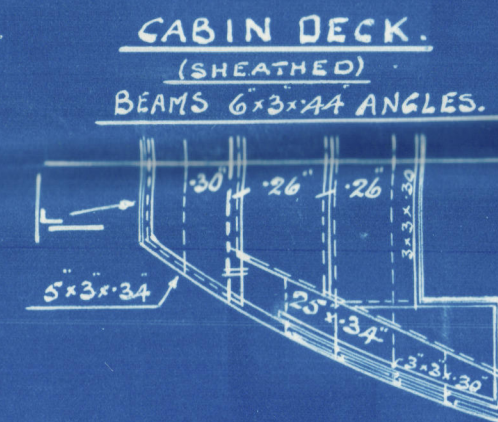
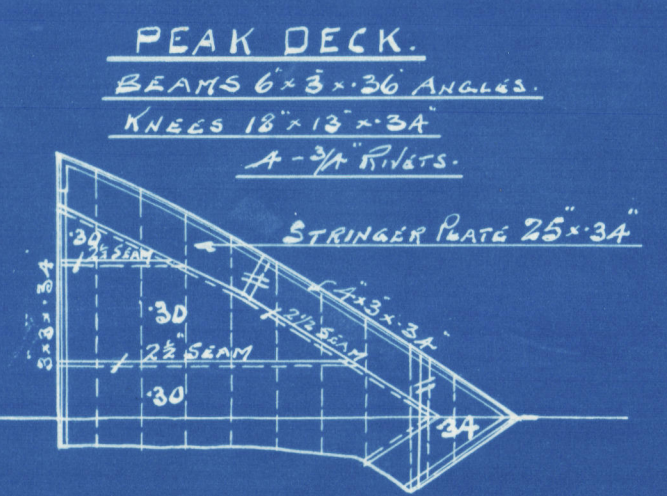
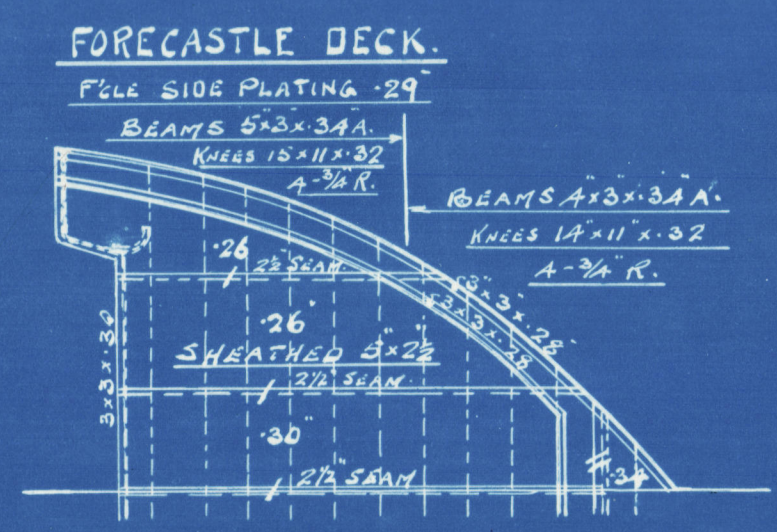
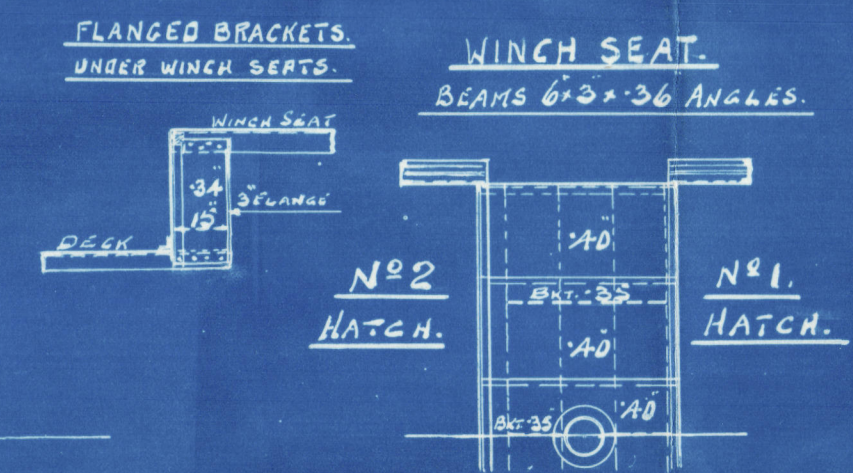
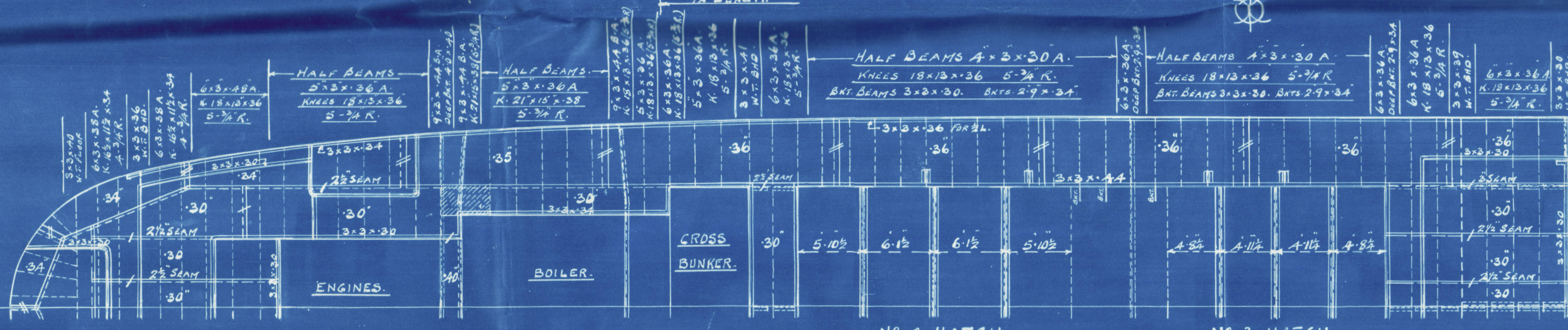
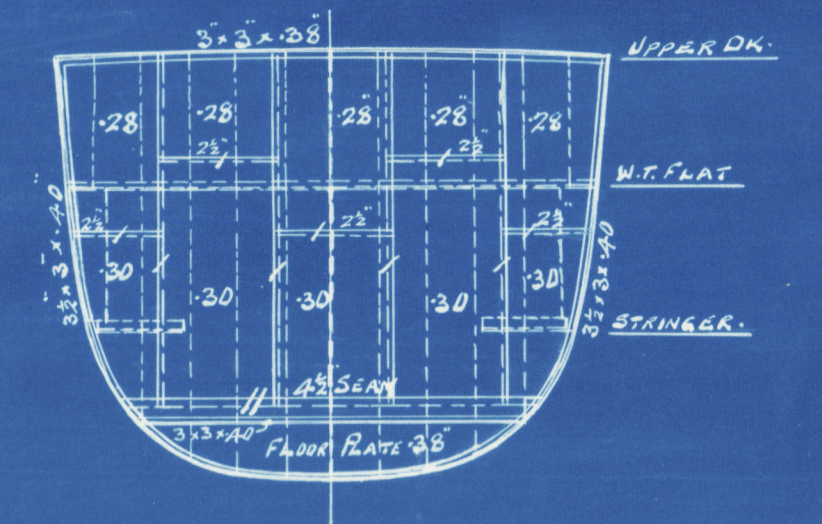
W.T. BULKHEAD ON 3 FRAME.  
VERTICAL STIFFS 4" x 3" x 3/4 A. 24 APART.  
BKT. TO B.O. 10" x 3/4 3-3/4 RIVTS.



W.T. BULKHEAD ON 5 FRAME.  
VERTICAL STIFFS 6" x 3" x 3/4 A. 24 APART.  
BKT. TO CABIN DK. 15" x 3/4 3-3/4 RIVTS.



COLLISION BULKHEAD ON 8 FRAME.  
VERTICAL STIFFERS 7 1/2" x 3" x 3/4 R.A. 24 APART.  
BKT. TO PEAK DECK 20" x 20" x 1/2 5-3/4 RIVTS.  
STIFFS ABOVE PEAK DK. 3 1/2" x 3" x 3/4 ANGLES. NO BKT.



No 328 SHIP.



CORHAVEN

Profile Specs  
As built ✓

SUNDERLAND RPT. No 31241

RETAIN

RETAIN

W374-0188



© 2020

Lloyd's Register  
Foundation