

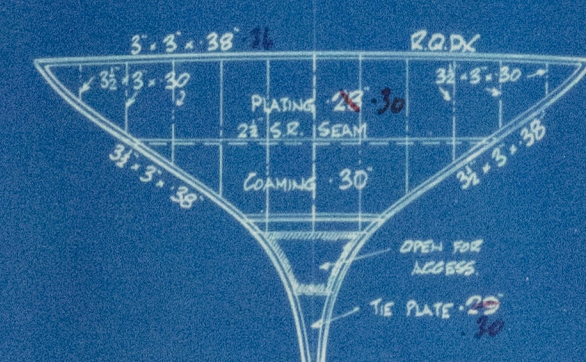
24/3/39

FREEBOARD PARTICULARS		
LENGTH ON L.W.L.	207' 5"	SHEER AFT 2'-3"
BREADTH MLD	33' 8"	FWD 4'-6"
DEPTH MLD	14' 6"	[PARABOLIC CURVE TO RULE, LOWEST POINT 8']
85% OF DEPTH MLD	12' 4"	
MOULDED DEPT AT 85% DEPTH MLD	18' 7 1/2" TNS	
COEFFICIENT	.75	
RAISED QUARTER DECK 18' 3 1/2" x 3' 7"		
FORECASTLE 28' 5" x 7'		
ROUND OF BEAM 8 1/2'		

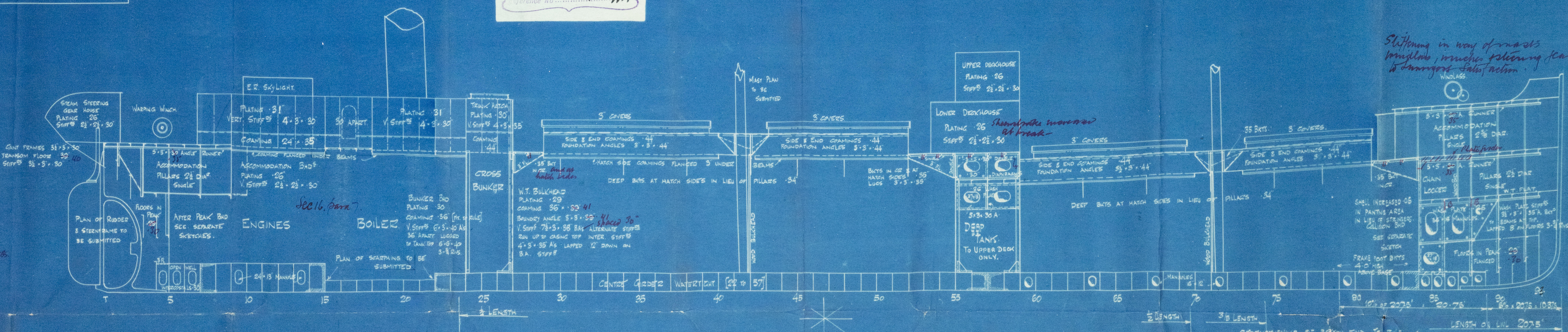
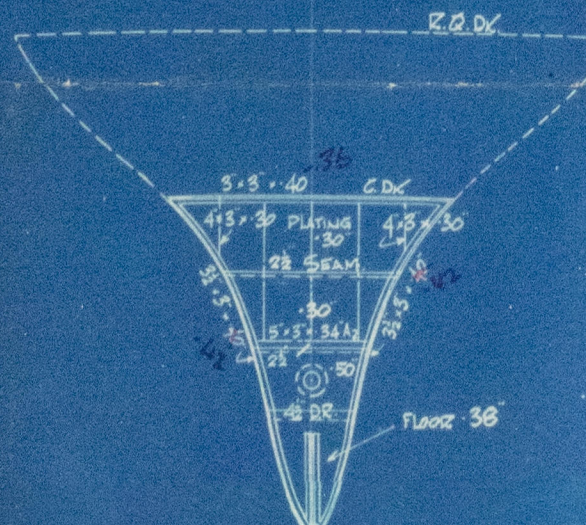
S. P. AUSTIN & SON, LTD.
SHIPBUILDERS & REPAIRERS,
WEAR DOCK YARD,
BURNLEY, LANC.
20th March 1939
Reference No. 5

N° 328 PROFILE & DECKS SCALE 8" = 1 FT.

W.T. BULKHEAD ON 3 FRAME
VERTICAL STIFFS 4'-3" x 3/4" AS 24 APART
BOYS TO 20' 3/4" 3'-3/4" RIS

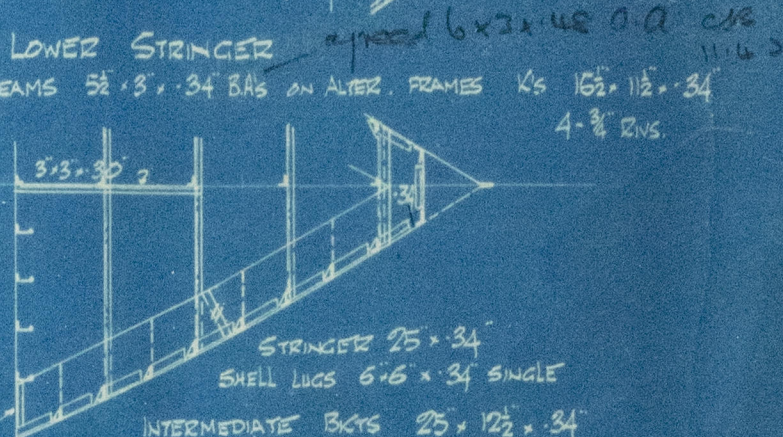
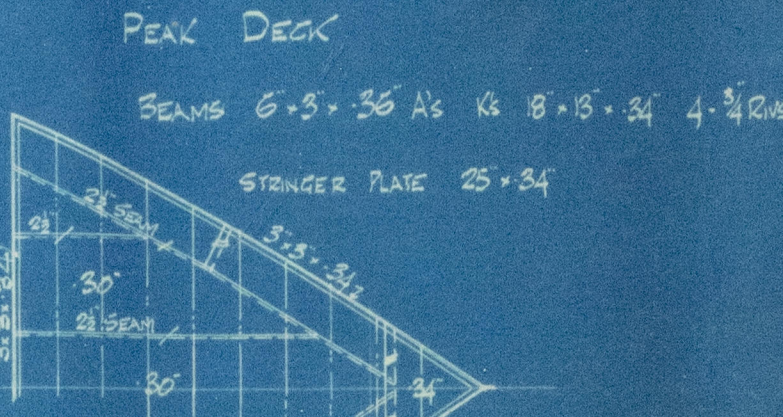
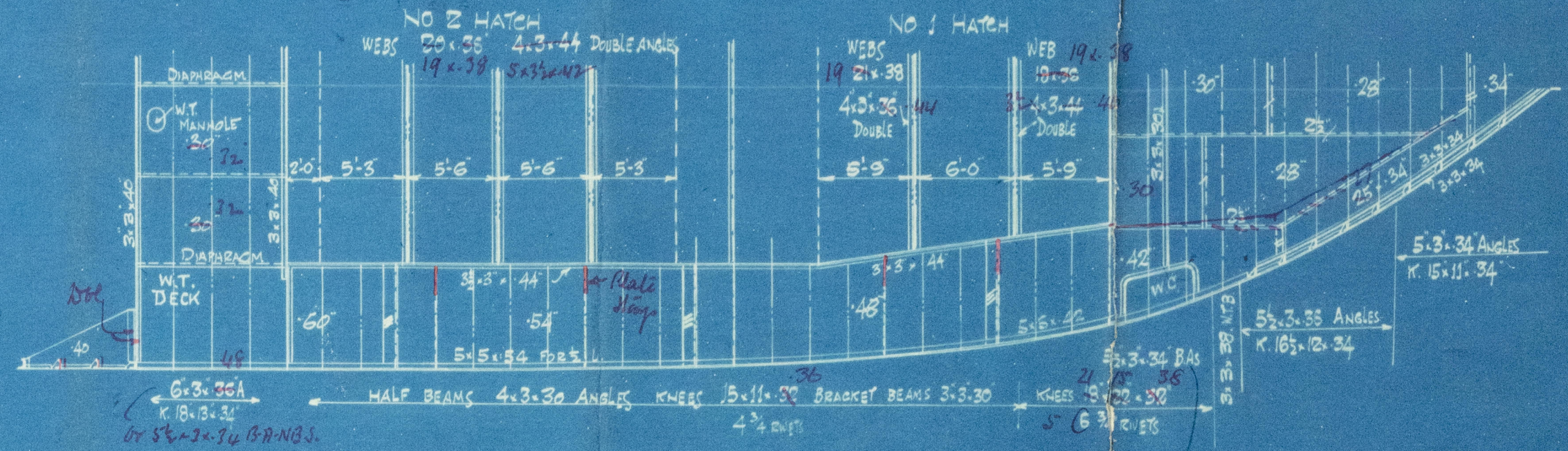
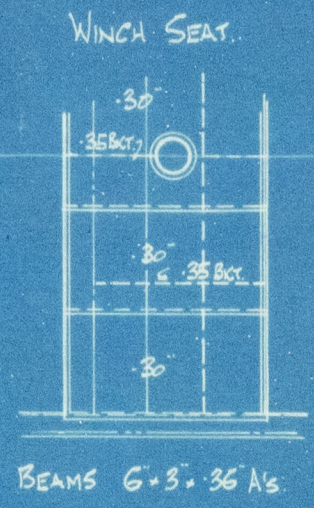
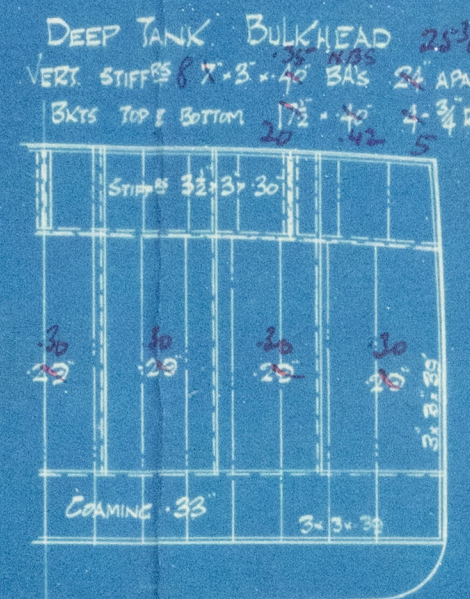
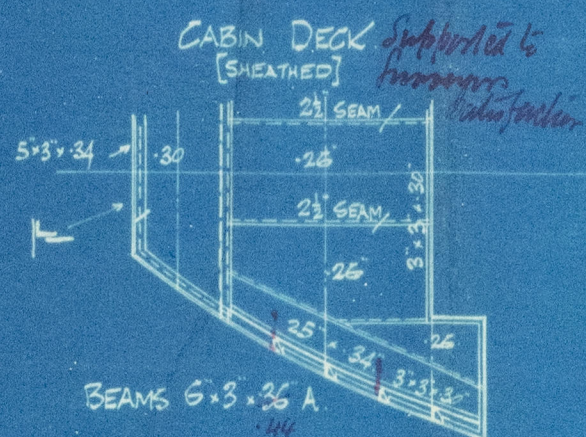
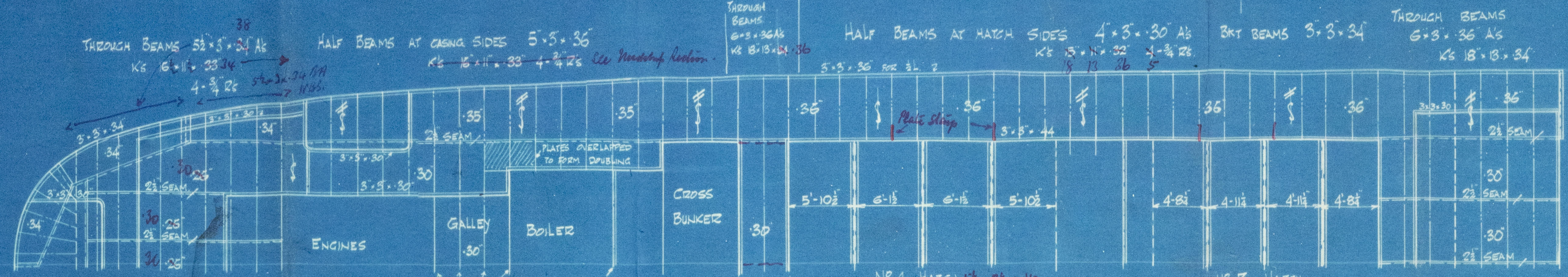
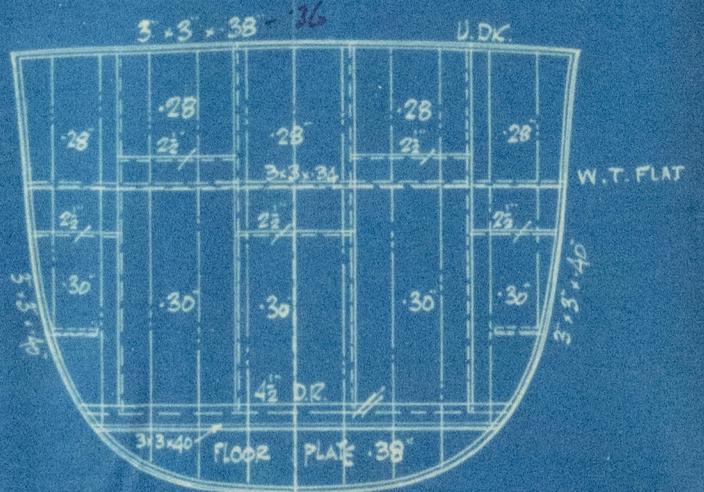


W.T. BULKHEAD ON 5 FRAME OR 5' 30" NBS
VERTICAL STIFFS 6'-5" x 3/4" AS 24 APART
BOYS TO CDK 12'-3/4" 3'-3/4" RIS



Slitting in way of masts
impossible, masts steering gear
to change position

COLLISION BMD ON 84 FRAME
VERT STIFFS 8'-5" x 3/8" AS 24 APART
BOYS TO PEAK DECK 20' x 42" 5'-3/4" RIS
STIFFS ABOVE PEAK DECK 32' x 5" x 30" NO BOYS



24/3/39

W374-0185

2 S. P. Austin
No 328

✓ Profile + Docks ✓

"boothaven"

UNGERLAND REF. No 31241

RETAIN

W.
✓

RETAIN

W374-0185



© 2020

Lloyd's Register
Foundation