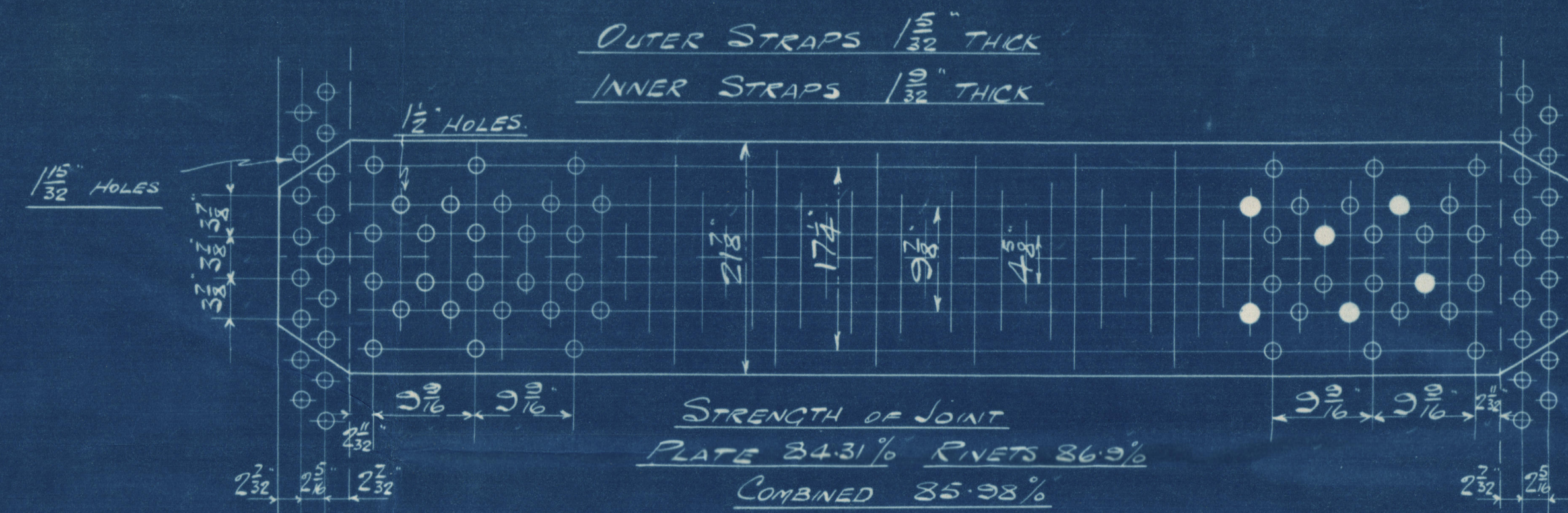
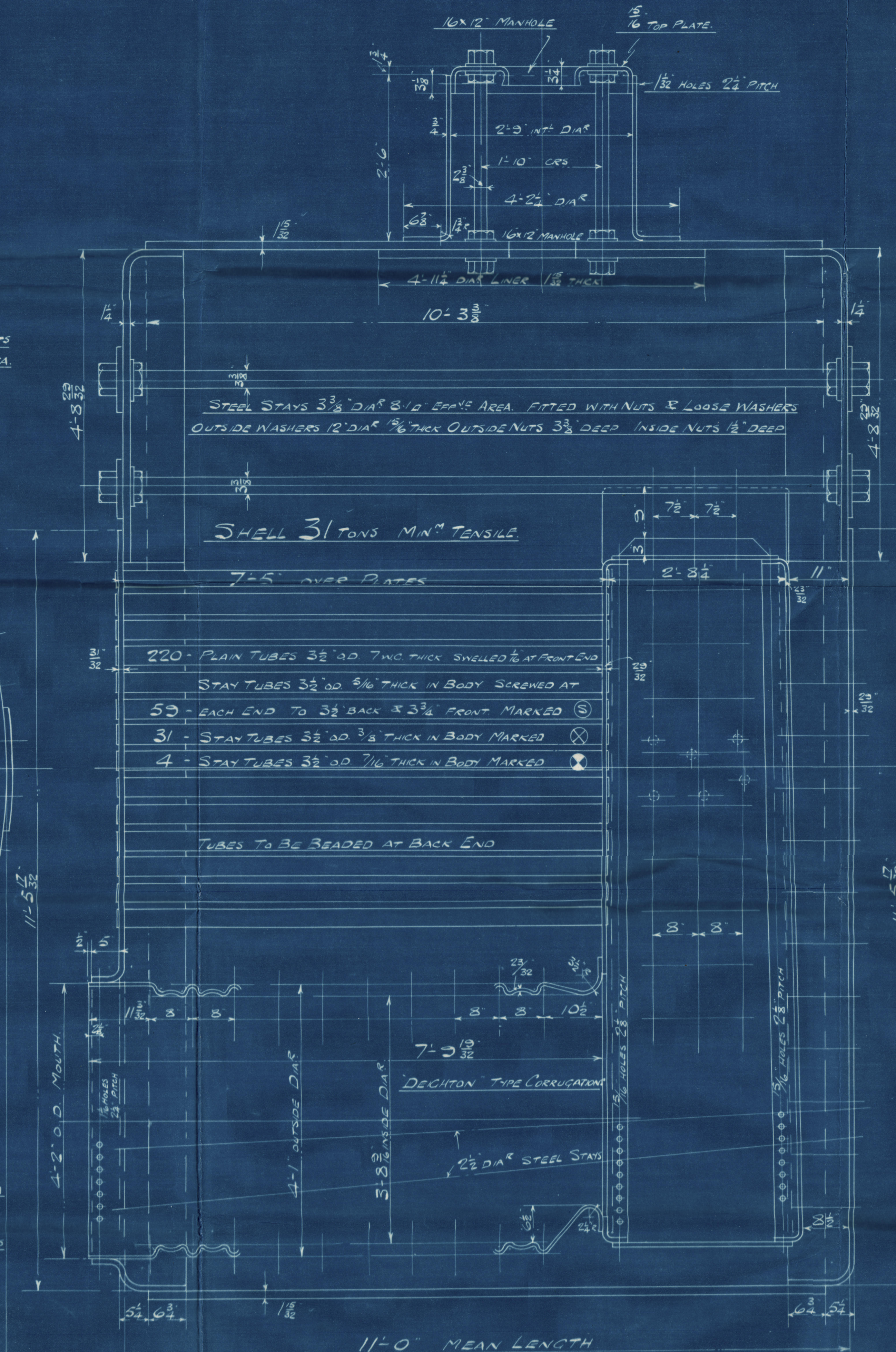
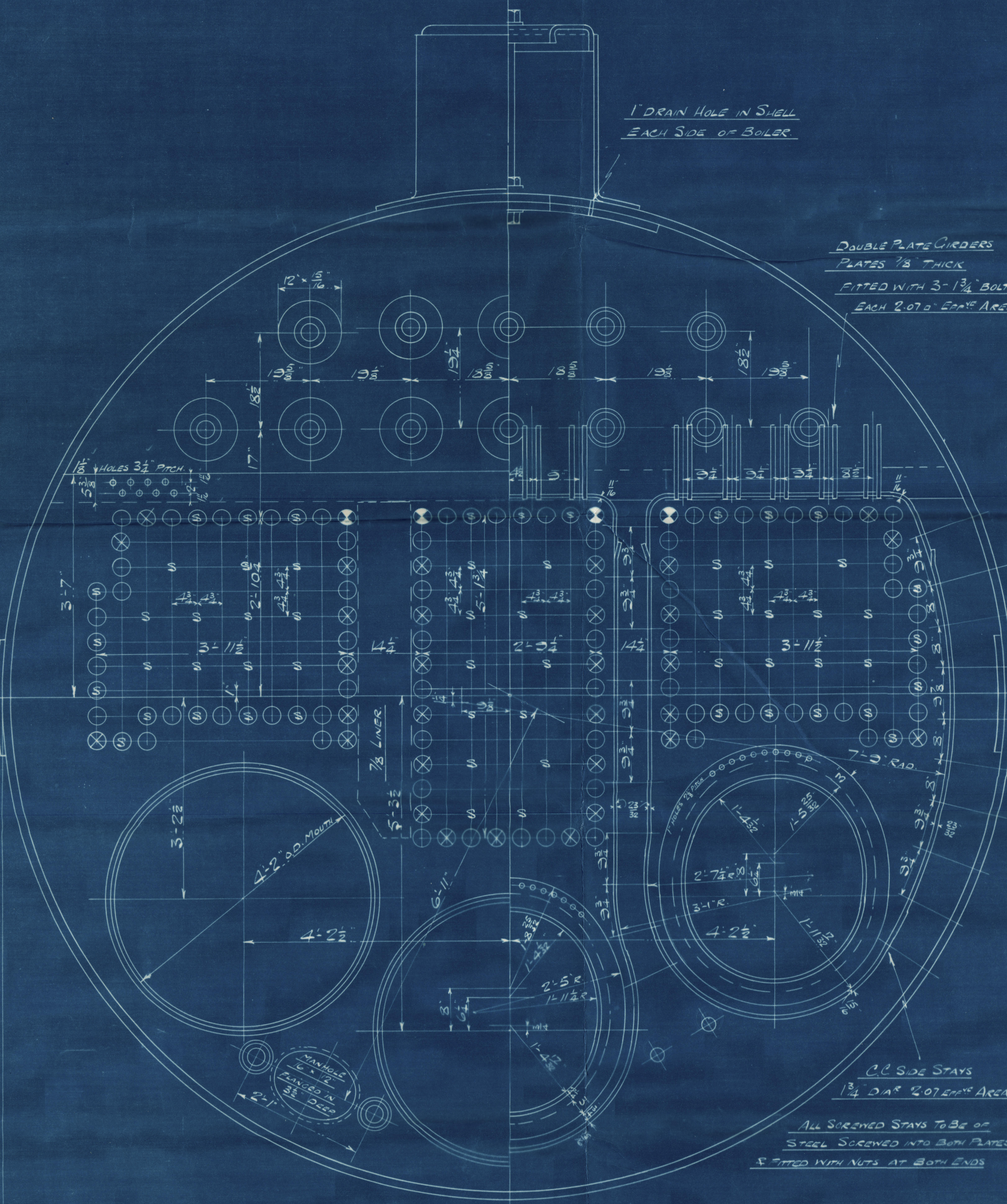


# DIMENSIONS.

TOTAL HEATING SURFACE	2551 #
SURFACE OF TUBES	2089 #
AREA OF FIRE GRATE	
LENGTH OF FIRE BARS	
NO OF TUBES	314
DIAM. OF TUBES OUTSIDE	3 1/2
LENGTH OF TUBES (OVER PLATES)	7'-5"
WORKING PRESSURE	225 LBS. / SQ. IN.
DIAM. OF SAFETY VALVE	



SHELL STRAPS & COMPENSATING PLATE:-	31-35 TONS TENSILE
GIRDERS:-	29-33 "
ALL OTHER PLATES INCLUDING DOME PLATES:-	26-30 "
LONGITUDINAL STAYS:-	28-32 "
COMBUSTION CHAMBER SCREENED STAYS:-	26-30 "
RIVETS:-	23 TONS SHEAR
LONGITUDINAL STAYS SCREWED	3 THDS. PER INCH
COMBUSTION CHAMBER STAYS SCREWED	10 THDS. PER INCH
L/V. IRON STAY TUBES SCREWED	3 THDS. PER INCH



PLAN NO 11209

STEEL BOILER NO 1550



CHARLES D. HOLMES & CO. LTD.  
ENGINEERS & BOILER MAKERS  
HULL 10-1-39

DRAWER NO 112  
DRAWING NO 765



RETAIN



© 2019

Lloyd's Register  
Foundation

W371-0011



HULL

3

Charles B. Holmes & Co

Boilers h<sup>o</sup>/1550 ✓

Working pressure 225 lbs □"

Intended for Cochrane and  
Sons & Selby, Yard No 1205

Duplicate of Bhs 1548/9  
intended for Cochrane & Sons  
Selby, Yard nos 1203/4

RETAIN

1205 "Cape Finisterre"

GEN BOX NO

761A

CAPE FINISTERRE

HULL RPT NO 50380

Lloyd's Register  
Foundation