

# JOB N° 570. S.S. 'CADILLAC'. PROFILE & DECK PLANS OF NEW MIDSHIP PORTION.

DIMENSIONS: LENGTH 8 P. 530'0" x 66'6" BREADTH EXT. x 42'0" D.M.<sup>o</sup> TO SHELTER D.<sup>o</sup>  
 ISHERWOOD SYSTEM (PATENT)  
 SCALE 1/8" = 1'00".

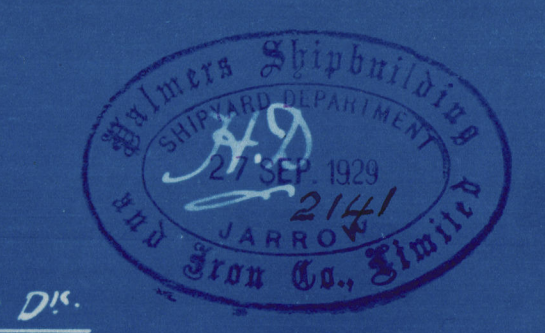
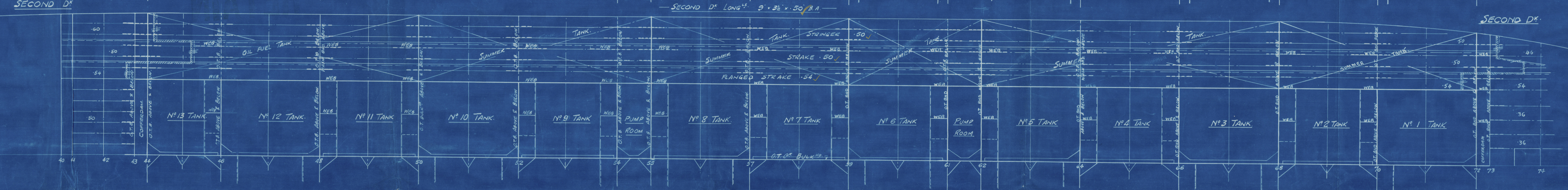
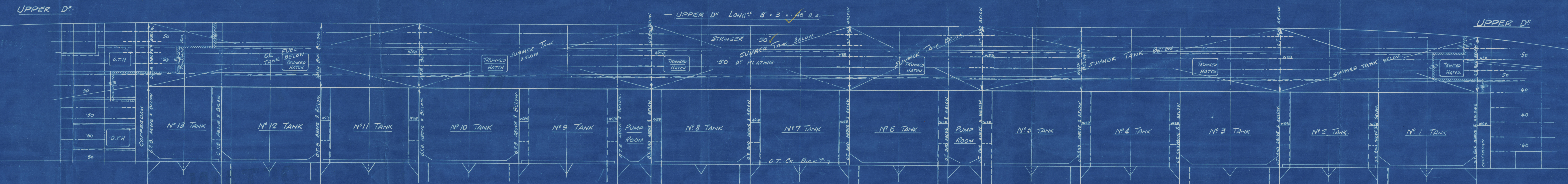
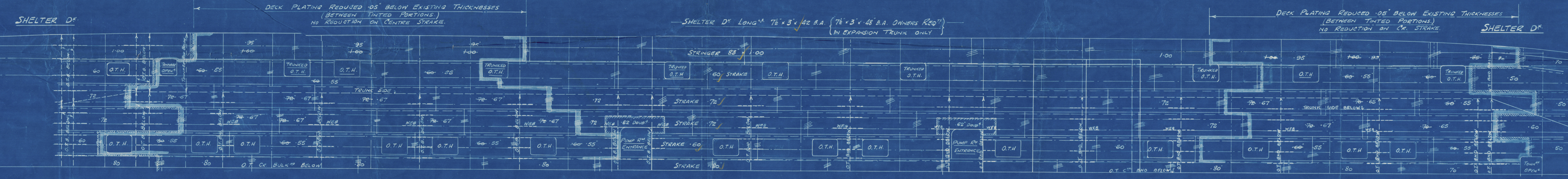
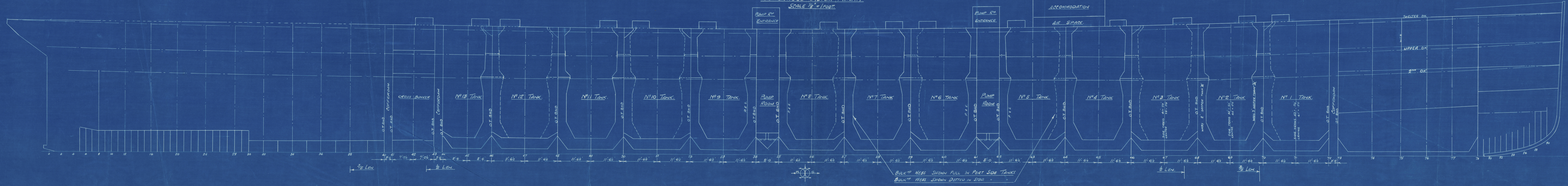


CHART RM.  
 CAPTAIN.  
 ACCOMMODATION.  
 AIR SPACE.

ALL SECTIONS TO BE LATEST BRITISH STANDARD.





W370-07M  
1000-0049  
2/2

FOR ENCLOSURE TO

*Lloyds Landon*

From

PALMERS S. & I. CO., Ltd.,

Shipyard Department,

JARROW-ON-TYNE.

2141 © 2021

Lloyd's Register  
Foundation



Palmer 570

RETAIN

St. Ladislav. New ref no 13-138

Profile & deck plans of new  
midship portion.

RETAIN

RETAIN

W370 - 0049



© 2021

Lloyd's Register  
Foundation