

S. S. N: 23

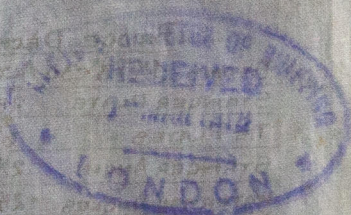
Midship Section

Mess A. Jeffrey & Co
Alloa

"Halabee"

Sch. 15370.

— NUMERALS —
HARRISSE NUMBER (B.D) 55-78
ORIGINAL " (L.B.D) 4520
Main Deck - 43' 2" (Quarter Deck) - 1
Main Deck - 18' 8" (Quarter Deck) - 2



© 2021

Lloyd's Register
W37-0151
Foundation

15.3.17.

EQUIPMENT NO 5055.51 (LETTER E)

- 1-Stockless Bower Anchor 8 1/4 CWTs. AND 1 Do. 8 CWT
- 1-Stream Anchor 2 3/4 CWT EX STOCK
- 1-Kedge Anchor 1 CWT EX STOCK
- 165 FATHOMS 1 5/16" STUDD CHAIN CABLE
- 45 FATHOMS 2 1/4" STEEL WIRE
- 75 FATHOMS 2 1/2" STEEL WIRE TOWLINE
- 90 FATHOMS 5" HAWSER

SS N° 23

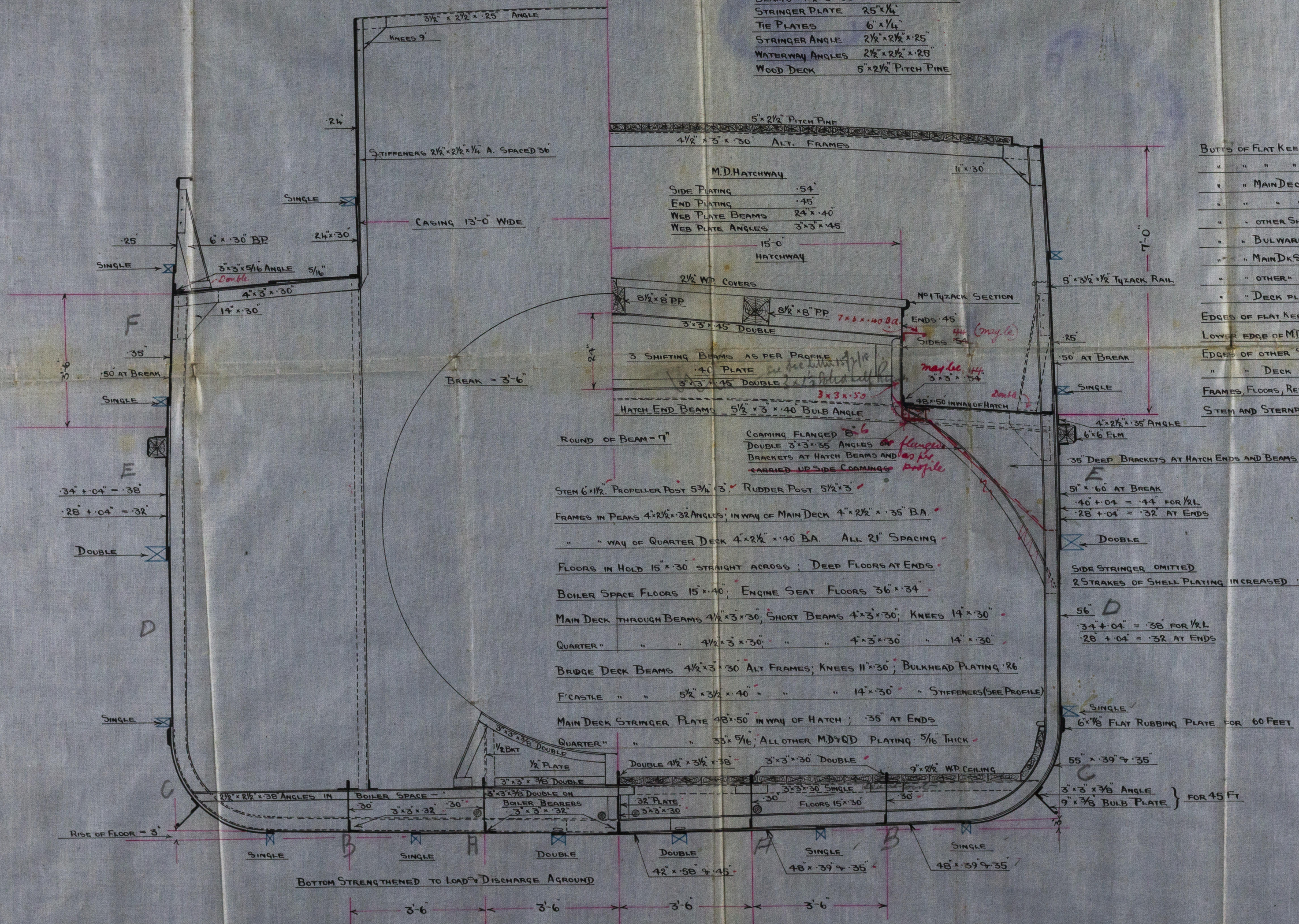
135 FT. x 23 FT. x 10'-9" MLD

LONGITUDINAL NUMBER	4556
RAISED QUARTER DECK	173.25
BRIDGE DECK	48.57
FORECASTLE	129.19
CASINGS	140.50
EQUIPMENT NUMBER	5055.51

NUMERALS	
TRANSVERSE NUMBER (B+D)	33.75
LONGITUDINAL " L(B+D)	4556
d(MAIN DECK) - 9.35	d(QUARTER DECK) = 13.0
1/5 (MAIN DECK) - 12.55	1/5 (QUARTER DECK) = 9.47

CLASS - 100 A1

BRIDGE DECK	
BEAMS 4 1/2 x 3 x 30 ALT. KNEES 11 x 30	
STRINGER PLATE 25 x 1/4	
TIE PLATES 6 x 1/4	
STRINGER ANGLE 2 1/2 x 2 1/2 x 25	
WATERWAY ANGLES 2 1/2 x 2 1/2 x 25	
WOOD DECK 5 x 2 1/2 PITCH PINE	



- RIVETING**
- BUTTS OF FLAT KEEL PLATE - 56 TO 50. PLATE TREBLE RIVETED 7/8" RIVETS
 - " " " " AT ENDS DOUBLE RIVETED 3/4" RIVETS
 - " " " " MAIN DECK SHEERSTRAKE TREBLE RIVETED FOR 1/2" RIVETS
 - " " " " " DOUBLE RIVETED AT ENDS 3/4" RIVETS
 - " " " " OTHER SHELL PLATING DOUBLE RIVETED THROUGHOUT 3/4" RIVETS
 - " " " " BULKHEADS AND FORECASTLE SIDE PLATING SINGLE 3/4" RIVETS
 - " " " " MAIN DECK STRINGER PLATE IN WAY OF HATCH TREBLE RIVETED 3/4" RIVETS
 - " " " " OTHER " " " DOUBLE RIVETED 3/4" RIVETS
 - " " " " DECK PLATING THROUGHOUT 7/8" " " 3/4" RIVETS
 - EDGES OF FLAT KEEL PLATE DOUBLE RIVETED 3/4" RIVETS
 - LOWER EDGE OF MD SHEERSTRAKE DOUBLE " 3/4" RIVETS
 - EDGES OF OTHER SHELL PLATING SINGLE " 3/4" RIVETS
 - " " " " DECK PLATING " " 3/4" RIVETS
 - FRAMES, FLOORS, REVERSE BARS, BEAMS, KEELSONS ETC. ALL 3/4" RIVETS
 - STEM AND STERNPOST 1" RIVETS

MIDSHIP SECTION

SS 135 FT x 23 FT x 10'-9" MLD

SCALE - 1/2" = 1 FT

Bottom strengthened forward as per Rules
Sketch to be submitted

A. JEFFREY & CO LTD
SHIPBUILDERS
5/17 AL19A