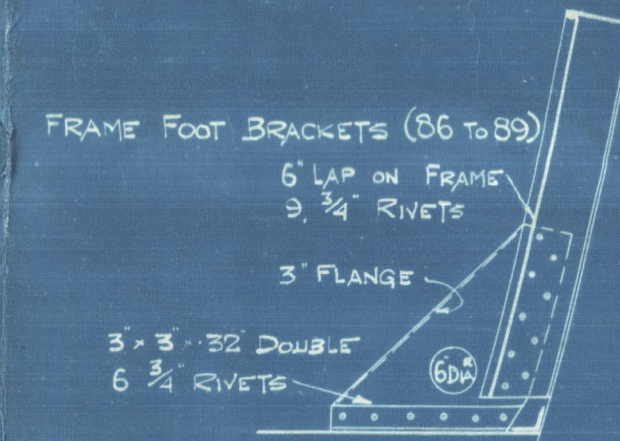


MIDSHIP SECTION. N° 309.

S.S. FIREGLOW.

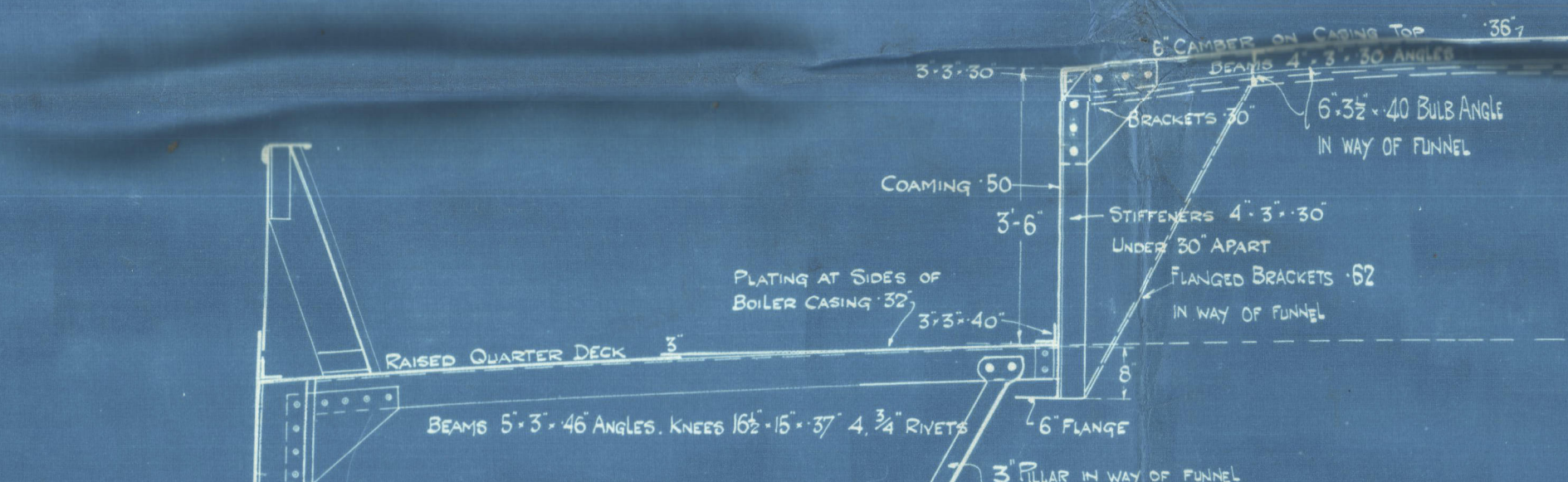
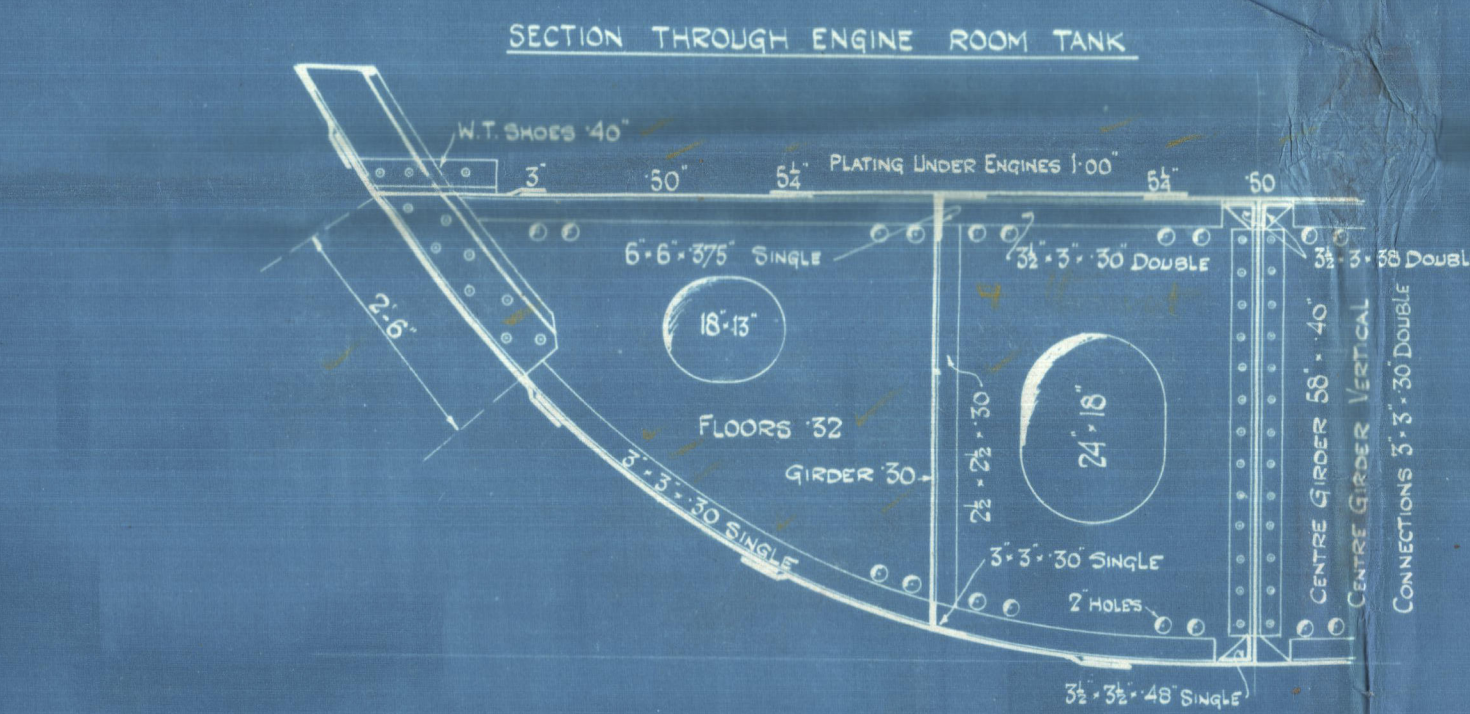


EQUIPMENT NUMERALS	
L (B+D)	11918
RAISED QUARTER DECK	12675
BRIDGE	1576
FORECASTLE	2370
HOUSE AFT	127
	4200
	62801
	12546



LENGTH B.P. 225'-0"
BREADTH MLD 35'-9"
DEPTH MLD TO UPPER DECK 17'-3 1/2"

CLASS 100 A1 LLOYDS
SCALE 1/2" = ONE FOOT



SECTION THROUGH BOILER ROOM.

S. P. AUGIN & SON, LTD.
SHIPBUILDERS & REPAIRERS,
WEAR DOCK YARD,
SUNDERLAND.
Date 30/7/24
Reference No. 24/10/1111

NUMERALS	
LENGTH ON L.N.L.	224.7'
BREADTH MOULDED	35.75'
DEPTH MOULDED TO UPPER DECK	17.29'
L (B+D)	11918
d TO UPPER DECK	13.89'
d TO QUARTER DECK	17.31'
s TO UPPER DECK	12.99'
s TO QUARTER DECK	10.65'
QUARTER DECK 3'-5" ABOVE UPPER DECK	

EQUIPMENT NUMBER 12546	
2 BOWER ANCHORS 250 cwt. EACH STOCKLESS	
1 ANCHOR 22	
1 STEAM 68	EX STOCK
210 FATHOMS 1 1/2" STUD CHAIN CABLE	
75	3 1/2" STEEL WIRE IN LIEU OF STEAM CHAIN
30	3 1/2"
30	2 1/2"
30	2 1/2"
30	2 1/2"
30	2 1/2"

STERN FRAME, RUDDER POST 6'-4 1/2". PROPELLER POST 6 1/2" x 4 1/2".
STEEL BAR 7' x 1 1/2".
RUDDER HEAD 6' x 6' x 1/2". PLATE 1/2" THICK.
DOUBLE BOTTOM.
FLOORS ON EVERY FRAME IN HOLDS 3/2" INCREASED TO 3/8" ON TANK ENDS EXCEPT IN BOILER SPACE.
ENGINE SPACE 3/2" IN BOILER SPACE 4/2" IN BOILER SPACE IN WAY OF SINGLE BOTTOM.
IN PEAKS 3/2" FLANGED.
FRAMES IN DOUBLE BOTTOM 3' x 3' x 30" SINGLE. DOUBLE FORWARD OF 3/8" LENGTH.
REVERSE FRAMES IN FLOORS 3' x 3' x 30" SINGLE IN HOLDS. 3' x 3' x 40" SINGLE IN WAY OF DOUBLE BOTTOM IN BOILER SPACE.
3' x 3' x 48" BOILER SPACE IN WAY OF SINGLE BOTTOM.
3' x 3' x 48" DOUBLE UNDER BOILER CHIMNEY.
3' x 3' x 50" ENGINES & TURBINE BLOCK.
INTERCOSTAL GIRDER 30" IN HOLDS. 40" IN BOILER SPACE IN WAY OF DOUBLE BOTTOM.
46" IN BOILER SPACE IN WAY OF SINGLE BOTTOM. 30" IN ENGINE SPACE.
VERTICAL ANGLES 2 1/2" x 30".
TOP & BOTTOM ANGLES 3' x 3' x 30". TOP ANGLE IN ENGINE SPACE 6' x 6' x 3/8".

FRAME FOOT BRACKETS 36" IN HOLDS.
46" IN BOILER SPACE & CROSS BUNKER.
4" LAP ON FRAME 6 1/2" RIVETS.
CONNECTIONS TO TANK TOP 3' x 3' x 32" SINGLE.
3' x 3' x 42" SINGLE IN BOILER SPACE 6 1/2" RIVETS.
NO CEILING ON TANK TOP.

C OUT & IN 60' x 45' FOR 3/8" LENGTH TO 41' AT END BUTTS OVERLAPPED & TREBLE RIVETED.
B IN 66 1/2' x 45' FOR 3/8" LENGTH TO 41' AT END BUTTS OVERLAPPED & TREBLE RIVETED.
A OUT 66 1/2' x 45' FOR 3/8" LENGTH TO 41' AT END BUTTS OVERLAPPED & TREBLE RIVETED.
KEEL IN 42' x 51' FOR 3/8" LENGTH TO 47' AT END BUTTS OVERLAPPED & TREBLE RIVETED.
A OUT 66 1/2' x 45' FOR 3/8" LENGTH TO 41' AT END BUTTS OVERLAPPED & TREBLE RIVETED.
B IN 66 1/2' x 45' FOR 3/8" LENGTH TO 41' AT END BUTTS OVERLAPPED & TREBLE RIVETED.
C OUT & IN 60' x 45' FOR 3/8" LENGTH TO 41' AT END BUTTS OVERLAPPED & TREBLE RIVETED.

FORECASTLE DECK BEAMS 5' x 3' x 44" ANGLES (91-95 FRAME) KNEES 16 1/2" x 32 1/2" RIVETS.
5' x 3' x 30" (94-101) 16 1/2" x 32 1/2" RIVETS.
STRONGER 30
ANGLE 5' x 3' x 30"
PLATING 20
CHEATHED UNDER WINGLASS ONLY WITH 3" PITCH PINE
DOUBLE ROW OF PILLARS IN FORECASTLE 24" DIA.
BRIDGE DECK 26 SHEATHED WITH 2 1/2" PITCH PINE
BRIDGE DECK STRINGER 33' x 30"
BRIDGE DECK STRINGER ANGLE 3' x 3' x 30"
WATERWAY 3' x 2 1/2" x 30"
UPPER DECK PLATING OVER DEEP TANK 34 FORWARD 30
8' x 3 1/2" x 48" DOUBLE ANGLES
WEB 25" (IN CENTRE) x 38" IN 1/2" x 12" MATCHES
4" SLING HOLE
MATCH SIDE & END COMINGS 44"
QUARTER DECK UNDER 35" 0" BEAM
RAISED QUARTER DECK THROUGH BEAMS AFT 6' x 3' x 32" BAY KNEES 18 1/2" x 37" 5 1/2" RIVETS IN
6' x 3' x 42" 18 1/2" x 37"
7' x 3' x 36" 18 1/2" x 37"
4' x 3' x 36" 18 1/2" x 37"
1/2" BEAMS AT MATCH SIDES 4' x 3' x 36" ANGLES 16 1/2" x 36" 4 1/2" RIVETS
ENG CASING 5' x 3' x 40" 16 1/2" x 37"
BRACKET BEAMS 3' x 3' x 34"

UPPER DECK THROUGH BEAMS OVER DEEP TANK 7' x 3' x 35 1/2" KNEES 18 1/2" x 37" 5 1/2" RIVETS
FORWARD 7' x 3' x 35 1/2" 24' x 38' 7 1/2"
4' x 3' x 36" ANGLES KNEES 16 1/2" x 36" 4 1/2" RIVETS
3' x 3' x 34"
FRAMES IN PEAKS (1-5) & (91-95) 6' x 3' x 40" ANGLES 13" APART
FRAMES TO QUARTER DECK IN ENGINE ROOM (17-18) 7' x 3' x 35 1/2" BAY 27' APART
(4-15) 6' x 3' x 44" BAY 27' APART NO WEB FRAMES
BOILER ROOM (19-24) 6' x 3' x 62" BAY
BOILER ROOM & CROSS BUNKER (25-29) 6' x 3' x 54" BAY 27' APART
HOLD (31-32) 8' x 3' x 48" BAY 27' APART
UPPER DECK IN DEEP TANK (33-34) 6' x 3' x 36" 27' APART
HOLDS (35-36) 6' x 3' x 46"
(36-39) 6' x 3' x 46"
(39-42) 6' x 3' x 46"
CENTRE GIRDER 32 1/2" x 40" FOR 3/8" LENGTH TO 34" AT ENDS
20 1/2" x 50" IN BOILER ROOM
58" x 40" IN ENGINE ROOM
BUTTS OVERLAPPED & TREBLE RIVETED THROUGHOUT.
TOP BARS 3' x 3' x 36" SINGLE DOUBLE FORWARD OF 3/8" LENGTH
IN BOILER ROOM 5' x 3' x 48" DOUBLE
ENGINE ROOM 3' x 3' x 30"
BOTTOM BARS 3' x 3' x 40" SINGLE DOUBLE FORWARD OF 3/8" LENGTH
IN BOILER ROOM 3' x 3' x 48" DOUBLE
MIDDLE LINE STRAKE 42 1/2" x 50" IN HOLDS BUTTS DOUBLE RIVETED THROUGHOUT
IN ENGINE ROOM 28" x 50"
TANK TOP IN HOLD & ENGINE ROOM 50" BUTTS DOUBLE RIVETED FOR 3/8" LENGTH SINGLE AT END
UNDER ENGINES 1' 00"
TANK MARGIN PLATE 36" x 40" 50" IN BOILER ROOM BUTTS DOUBLE RIVETED THROUGHOUT.
FRAME FOOT BRACKET 36" IN HOLDS
4" LAP ON FRAME 6 1/2" RIVETS
CONNECTIONS TO TANK TOP 3' x 3' x 32" SINGLE
6 1/2" RIVETS.

UPPER DECK SHEER STRAKE 46' x 54" FOR 3/8" LENGTH TO 40" AT END BUTTS OVERLAPPED & TREBLE RIVETED
ONE PLATE INCREASED TO 80" IN LIEU OF DOUBLING BUTTS OVERLAPPED & QUADRUPLE WHERE 80" THICK
BRACKETS AT MATCH SIDES IN LIEU OF PILLARS 34
4" LAP ON FRAME 9 1/2" RIVETS
G IN 49' x 48" FOR 3/8" LENGTH TO 41" WHERE 27" SPACING BUTTS OVERLAPPED & TREBLE RIVETED TO DOUBLE AT END 37" IN PEAK
F OUT 47 1/2' x 45' FOR 3/8" LENGTH TO 41" WHERE 27" SPACING BUTTS OVERLAPPED & DOUBLE RIVETED THROUGHOUT 37" IN PEAK
E IN 48 1/2' x 45' FOR 3/8" LENGTH TO 41" WHERE 27" SPACING BUTTS OVERLAPPED & DOUBLE RIVETED THROUGHOUT 37" IN PEAK
D OUT 52 1/2' x 45' FOR 3/8" LENGTH TO 41" WHERE 27" SPACING BUTTS OVERLAPPED & TREBLE RIVETED TO DOUBLE AT END 37" IN PEAK
BLIGE KEEL 6' x 4' x 40" TEE BAR 6' x 40" BULB PLATE

UPPER DECK THROUGH BEAMS OVER DEEP TANK 7' x 3' x 35 1/2" KNEES 18 1/2" x 37" 5 1/2" RIVETS
FORWARD 7' x 3' x 35 1/2" 24' x 38' 7 1/2"
4' x 3' x 36" ANGLES KNEES 16 1/2" x 36" 4 1/2" RIVETS
3' x 3' x 34"
FRAMES IN PEAKS (1-5) & (91-95) 6' x 3' x 40" ANGLES 13" APART
FRAMES TO QUARTER DECK IN ENGINE ROOM (17-18) 7' x 3' x 35 1/2" BAY 27' APART
(4-15) 6' x 3' x 44" BAY 27' APART NO WEB FRAMES
BOILER ROOM (19-24) 6' x 3' x 62" BAY
BOILER ROOM & CROSS BUNKER (25-29) 6' x 3' x 54" BAY 27' APART
HOLD (31-32) 8' x 3' x 48" BAY 27' APART
UPPER DECK IN DEEP TANK (33-34) 6' x 3' x 36" 27' APART
HOLDS (35-36) 6' x 3' x 46"
(36-39) 6' x 3' x 46"
(39-42) 6' x 3' x 46"
CENTRE GIRDER 32 1/2" x 40" FOR 3/8" LENGTH TO 34" AT ENDS
20 1/2" x 50" IN BOILER ROOM
58" x 40" IN ENGINE ROOM
BUTTS OVERLAPPED & TREBLE RIVETED THROUGHOUT.
TOP BARS 3' x 3' x 36" SINGLE DOUBLE FORWARD OF 3/8" LENGTH
IN BOILER ROOM 5' x 3' x 48" DOUBLE
ENGINE ROOM 3' x 3' x 30"
BOTTOM BARS 3' x 3' x 40" SINGLE DOUBLE FORWARD OF 3/8" LENGTH
IN BOILER ROOM 3' x 3' x 48" DOUBLE
MIDDLE LINE STRAKE 42 1/2" x 50" IN HOLDS BUTTS DOUBLE RIVETED THROUGHOUT
IN ENGINE ROOM 28" x 50"
TANK TOP IN HOLD & ENGINE ROOM 50" BUTTS DOUBLE RIVETED FOR 3/8" LENGTH SINGLE AT END
UNDER ENGINES 1' 00"
TANK MARGIN PLATE 36" x 40" 50" IN BOILER ROOM BUTTS DOUBLE RIVETED THROUGHOUT.
FRAME FOOT BRACKET 36" IN HOLDS
4" LAP ON FRAME 6 1/2" RIVETS
CONNECTIONS TO TANK TOP 3' x 3' x 32" SINGLE
6 1/2" RIVETS.

UPPER DECK SHEER STRAKE 46' x 54" FOR 3/8" LENGTH TO 40" AT END BUTTS OVERLAPPED & TREBLE RIVETED
ONE PLATE INCREASED TO 80" IN LIEU OF DOUBLING BUTTS OVERLAPPED & QUADRUPLE WHERE 80" THICK
BRACKETS AT MATCH SIDES IN LIEU OF PILLARS 34
4" LAP ON FRAME 9 1/2" RIVETS
G IN 49' x 48" FOR 3/8" LENGTH TO 41" WHERE 27" SPACING BUTTS OVERLAPPED & TREBLE RIVETED TO DOUBLE AT END 37" IN PEAK
F OUT 47 1/2' x 45' FOR 3/8" LENGTH TO 41" WHERE 27" SPACING BUTTS OVERLAPPED & DOUBLE RIVETED THROUGHOUT 37" IN PEAK
E IN 48 1/2' x 45' FOR 3/8" LENGTH TO 41" WHERE 27" SPACING BUTTS OVERLAPPED & DOUBLE RIVETED THROUGHOUT 37" IN PEAK
D OUT 52 1/2' x 45' FOR 3/8" LENGTH TO 41" WHERE 27" SPACING BUTTS OVERLAPPED & TREBLE RIVETED TO DOUBLE AT END 37" IN PEAK
BLIGE KEEL 6' x 4' x 40" TEE BAR 6' x 40" BULB PLATE

Sunderland.

S. P. Austin & Son

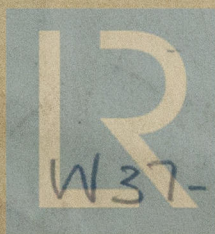
Midship Section.

(as built)

- N^o 309 -

"S.S. FIREGLOW."

Sld Rpt No. 29114.



© 2021

Lloyd's Register
Foundation