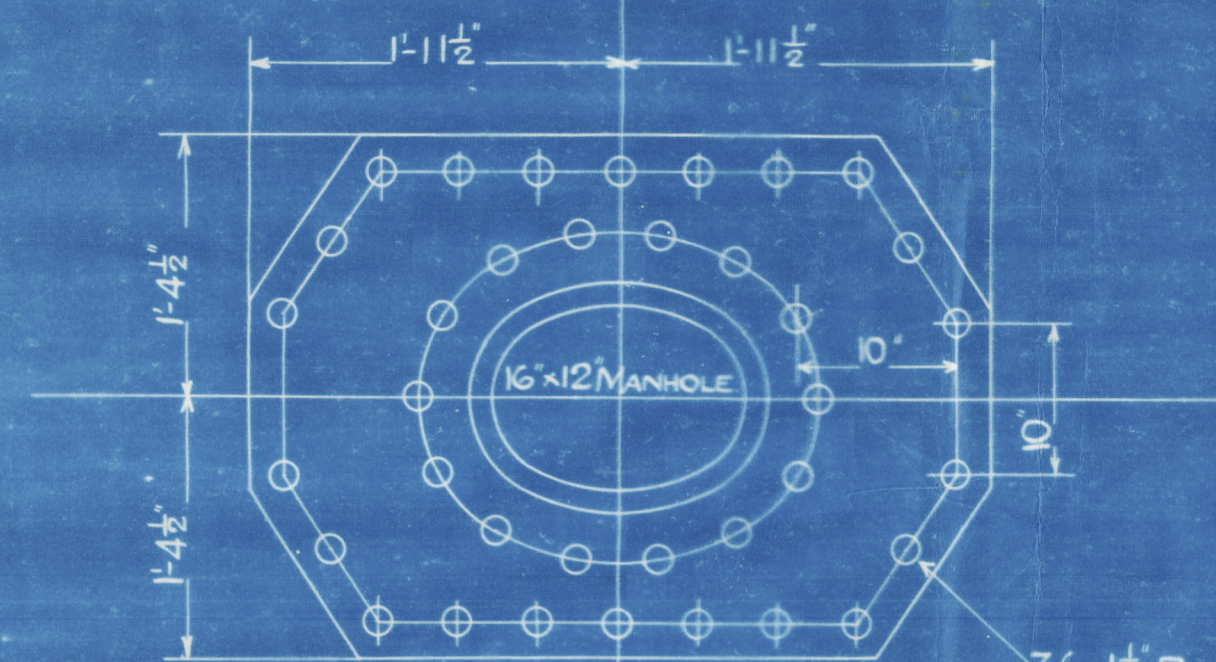
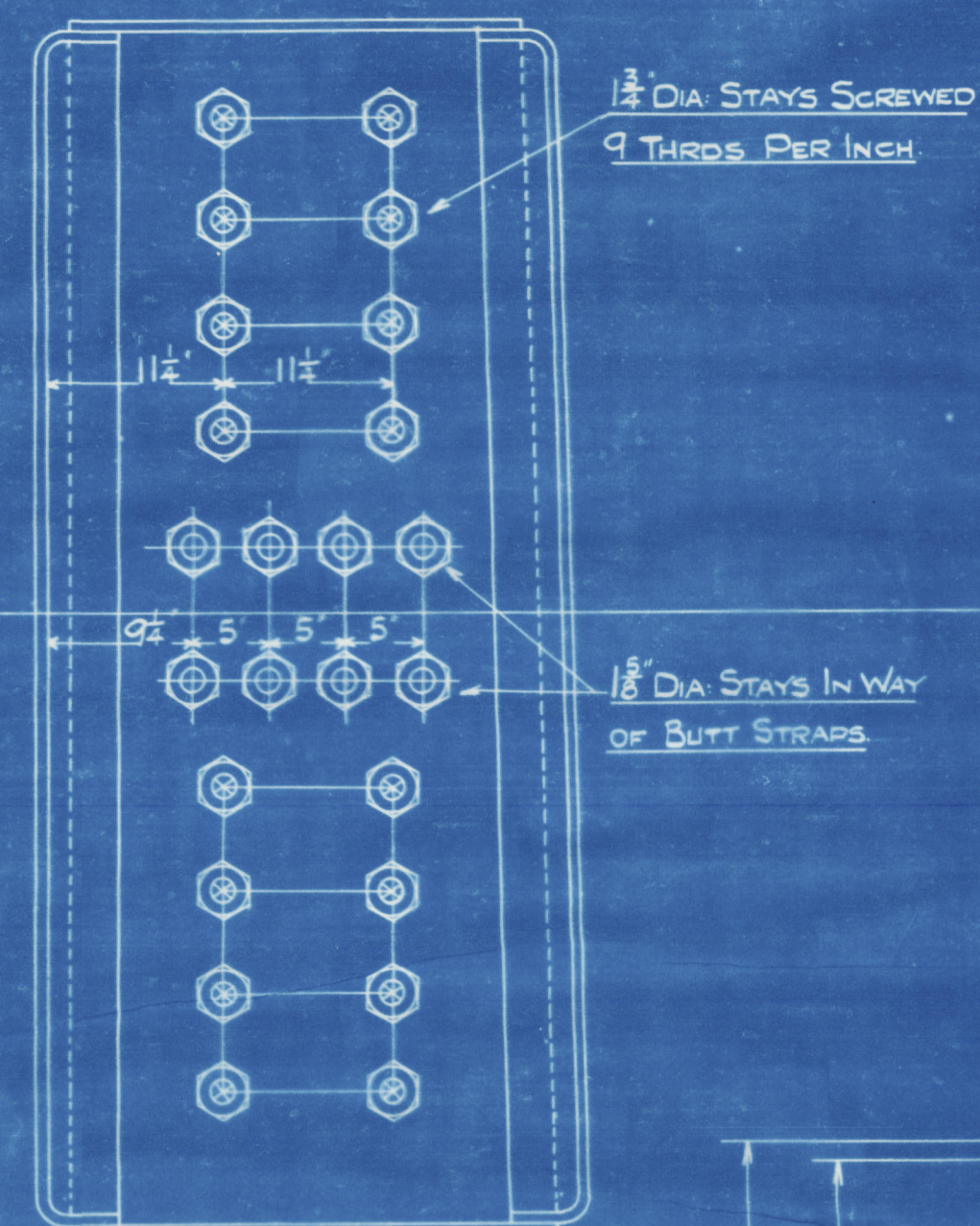


HEATING SURFACE		
362 TUBES 3' EXT. DIA. X 8'-3" B.T.P.	=	2345
FURNACES	=	186
COMBUSTION CHAMBERS	=	260
BACK TUBE PLATE	=	46
FRONT TUBE PLATE	=	42
TOTAL 1 BOILER	=	2879
3 BOILERS	=	8637
GRATE SURFACE 18" 5'-6" BARS	=	68
WORKING PRESSURE - 200 LBS.	LLOYD'S SURVEY.	
TEST PRESSURE - 350 LBS.		

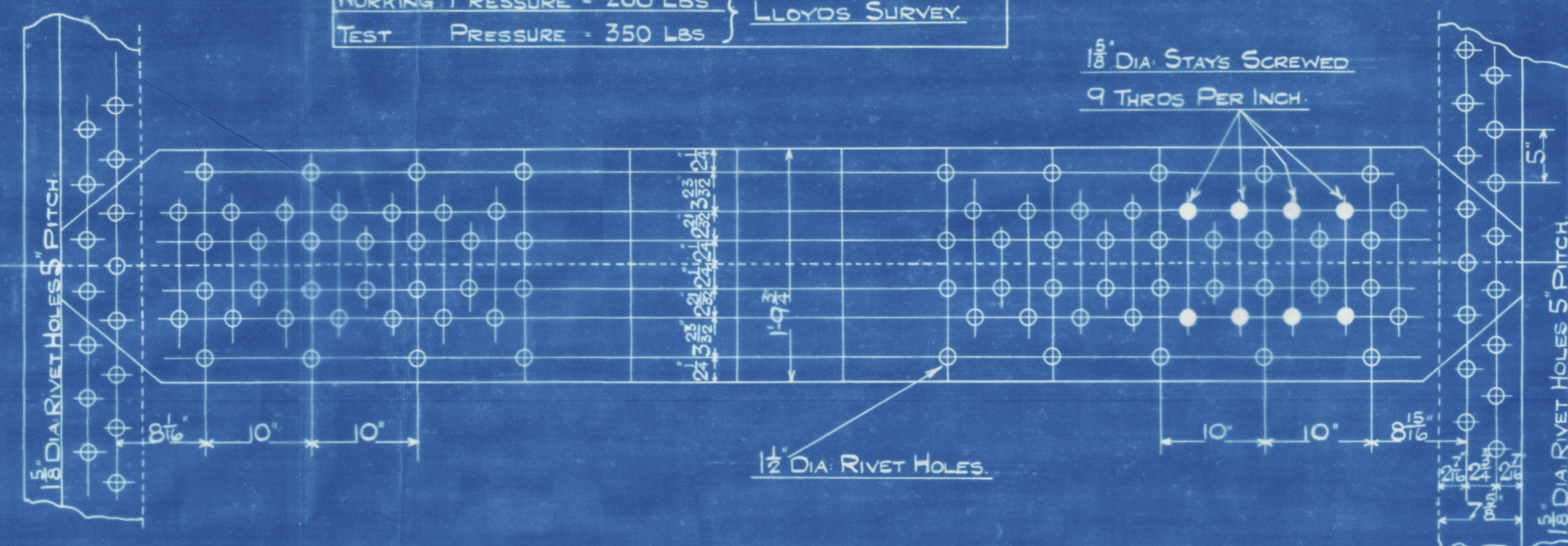
OIL FUEL ONLY.



36 1/2" RIVET HOLES
1/2" COMPENSATION PLATE



VIEW ON WING COMBUSTION CHAMBER



SHELL RIVETING

DOUBLE BUTT STRAP JOINTS

SHELL PLATES 1 1/2" THICK. INNER BUTT STRAPS 1 1/2" OUTER BUTT STRAPS 1 3/8" THICK.

RIVET HOLES 1 1/2" DIA. GREATEST PITCH 10".

PLATE SECTION - 85%. RIVET SECTION 93.43.

TENSILE STRENGTH OF SHELL PLATES 29 TO 33 TONS PER D'.

FURNACES & COMB. CHAMBER PLATES 26 TO 30 TONS PER D'.

GIRDER PLATES 28 TO 32 TONS D'.

MANHOLE RING 26 TO 30 TONS D'.

NOTE!

ALL PLATE EDGES PLANED & ALL HOLES TO BE DRILLED IN PLACE.

ALL COMBUSTION CHAMBER SCREWED STAYS SCREWED

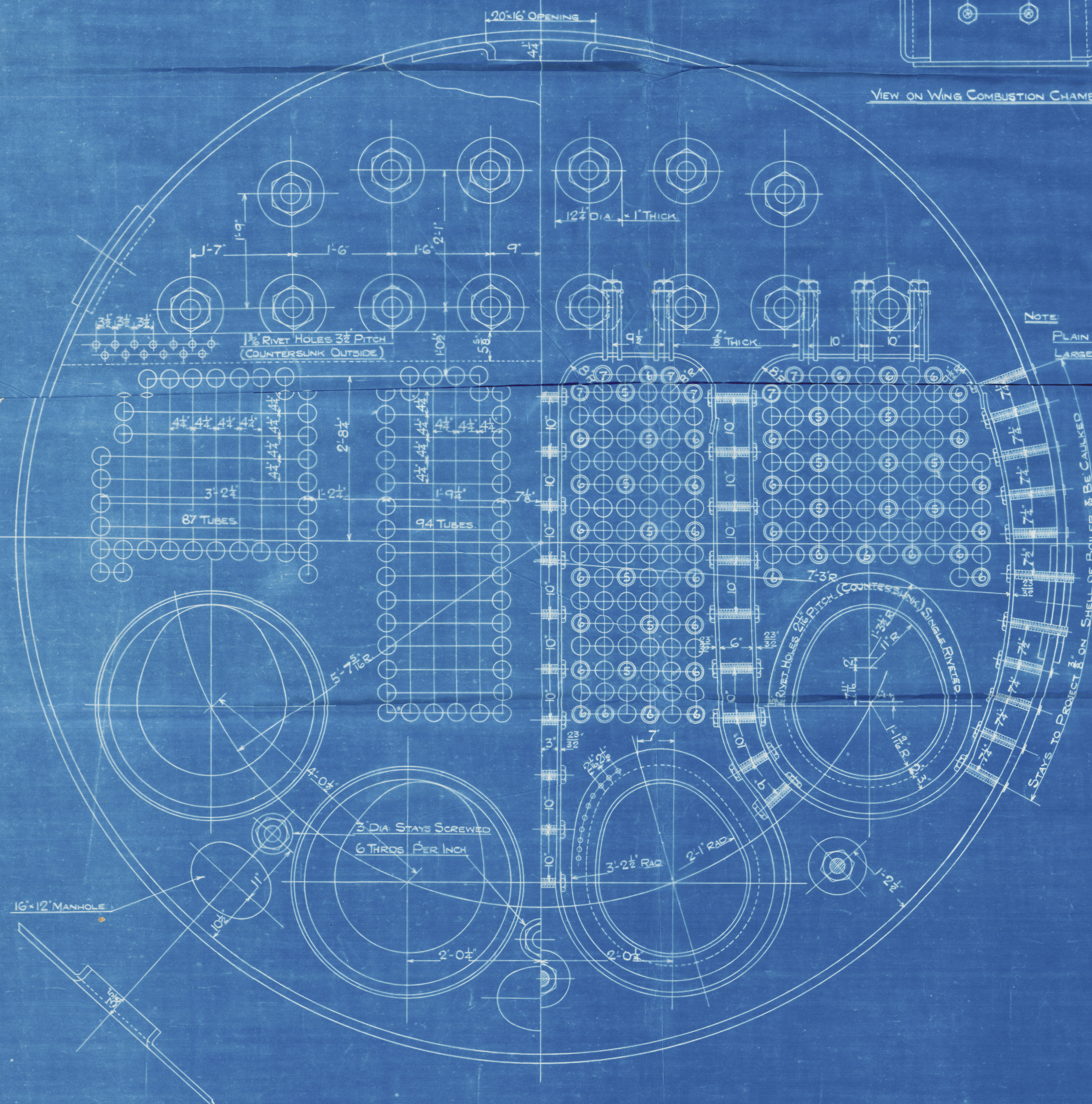
9 THRODS PER INCH & NUTTED WHERE SHOWN WITH NUTS

3" DEEP AT EACH END

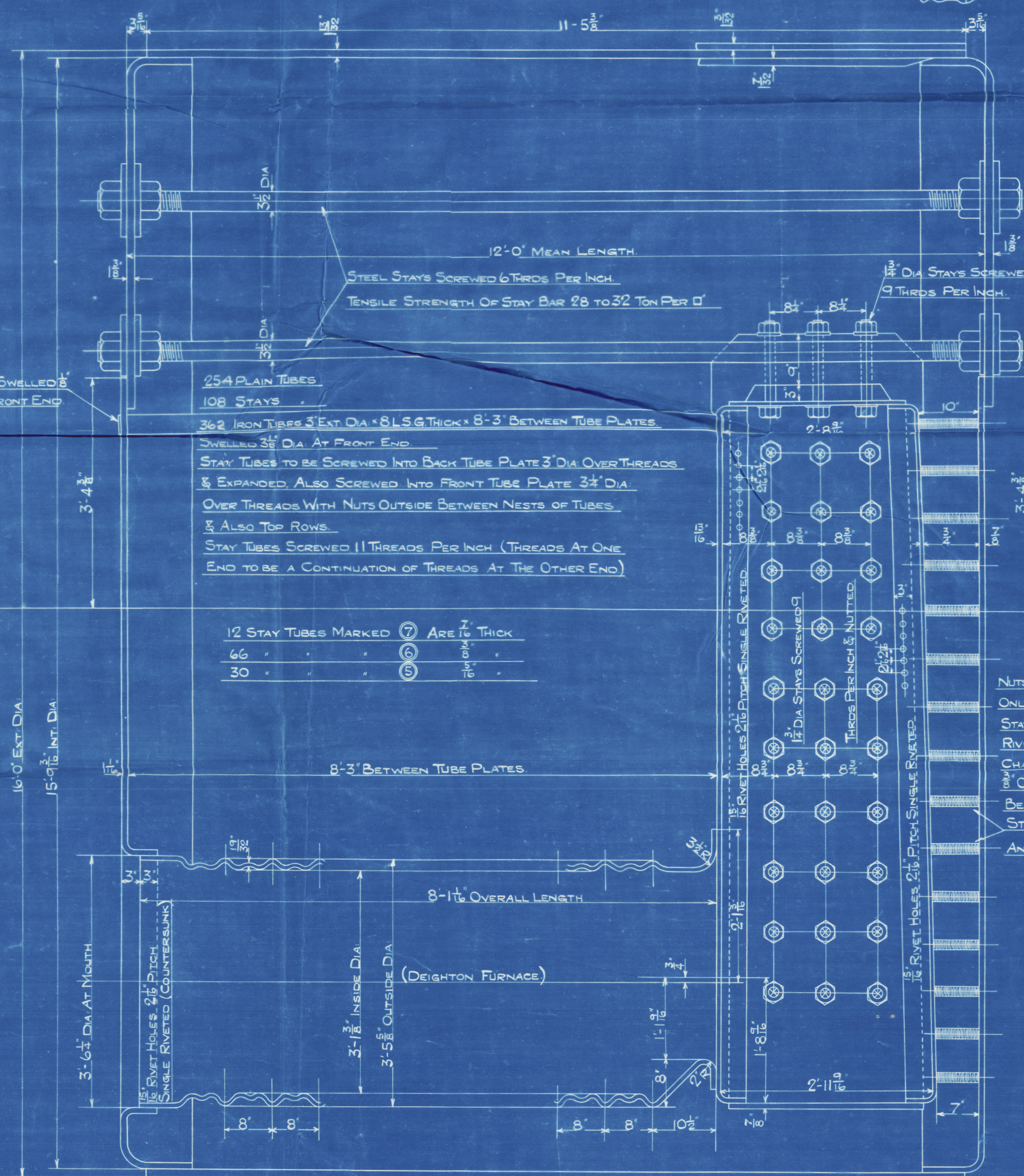
COMBUSTION CHAMBER STAYS MARKED THUS ● ARE 2" DIA.

● 1 1/2" DIA.

○ 1 1/8" DIA.



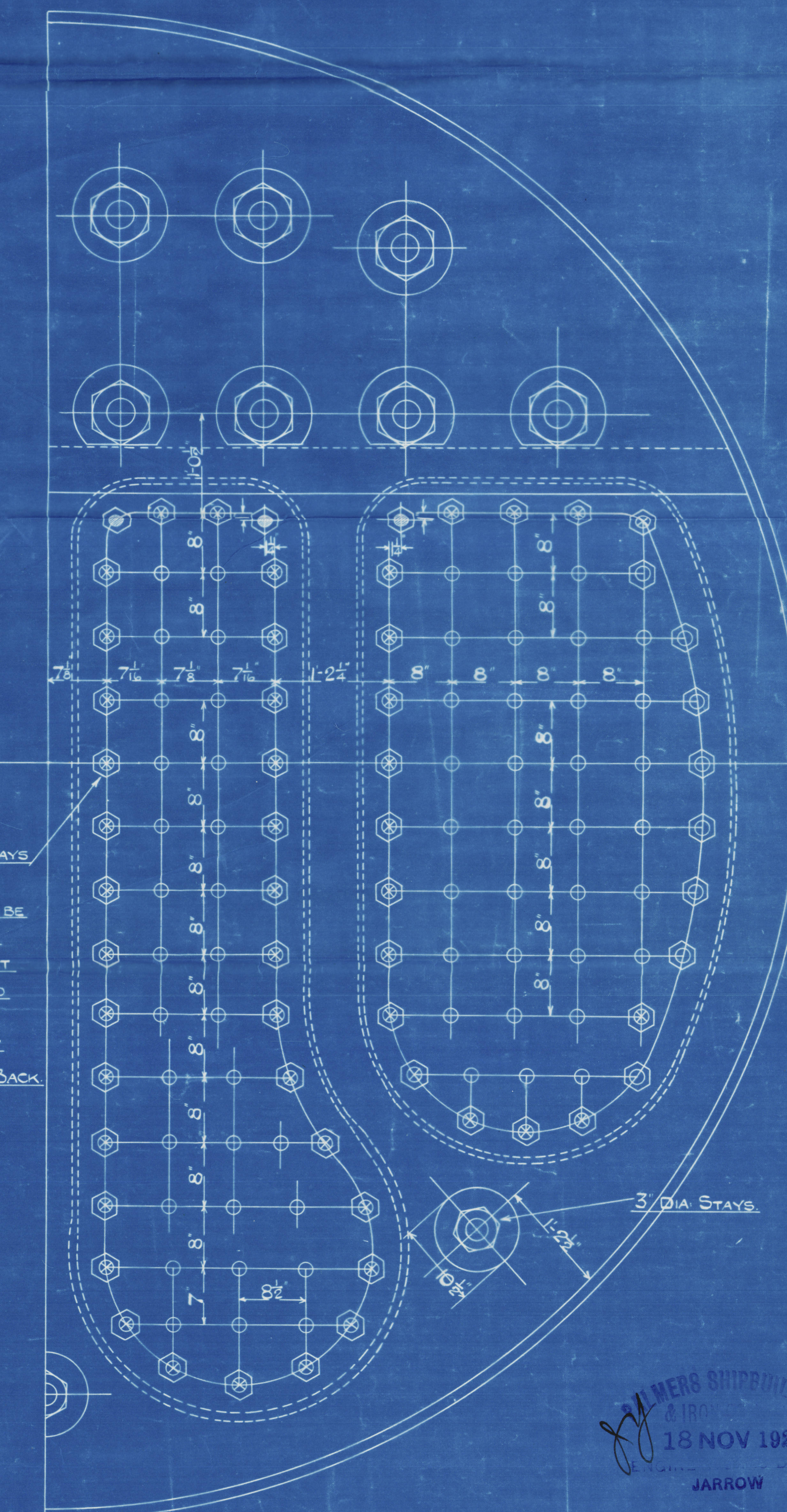
NOTE
PLAIN TUBES SWELLED
LARGER AT FRONT END



MAIN BOILERS. 3, OFF EACH ENG. N°.

SCALE, 1" = 1 FOOT.

ALL STEEL EXCEPT WHERE OTHERWISE STATED.



MEMO SUBMITTED
18 NOV 1920
JARROW

N° 29
934

W367-007

ENG N° 934

Palmer's S.B. & Son's Co. Ltd

S. S. No. 934.

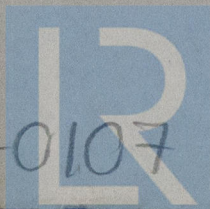
Main Boilers.

British Officer
NEWCASTLE ON TYNE.

Report No. 146164

RETAIN

W367-0107



© 2021

Lloyd's Register
Foundation