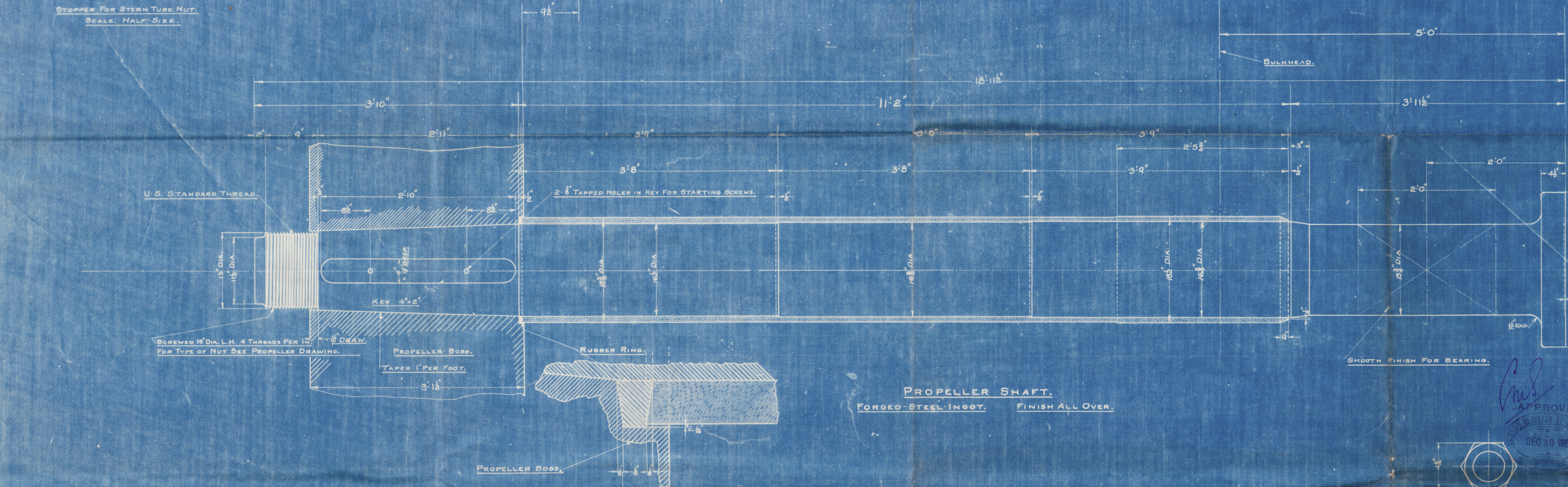
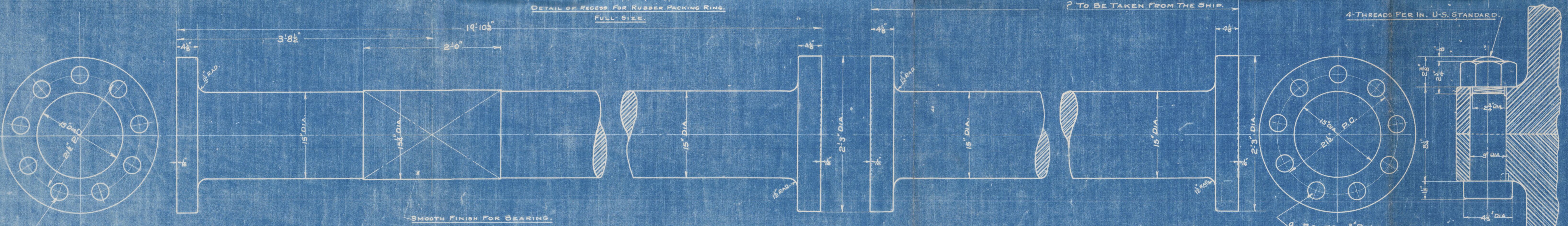


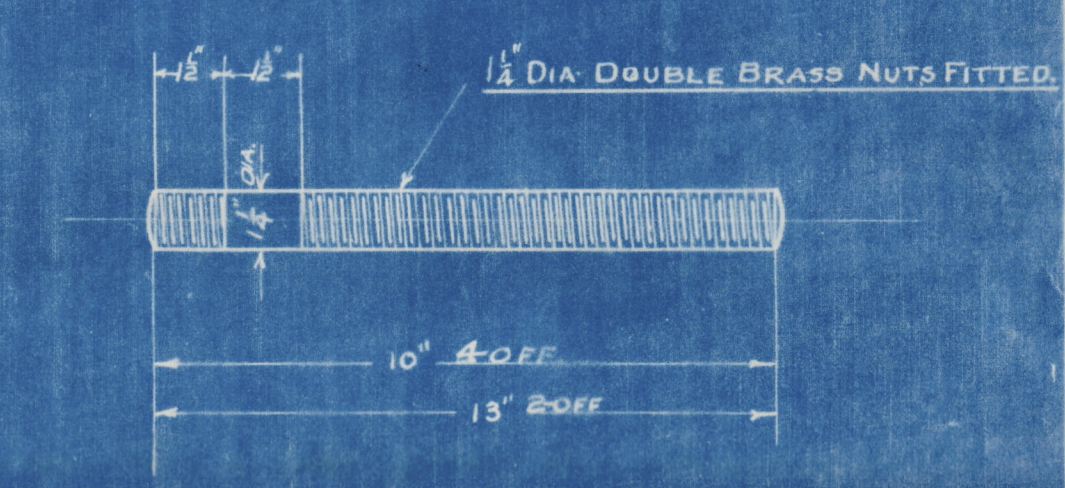
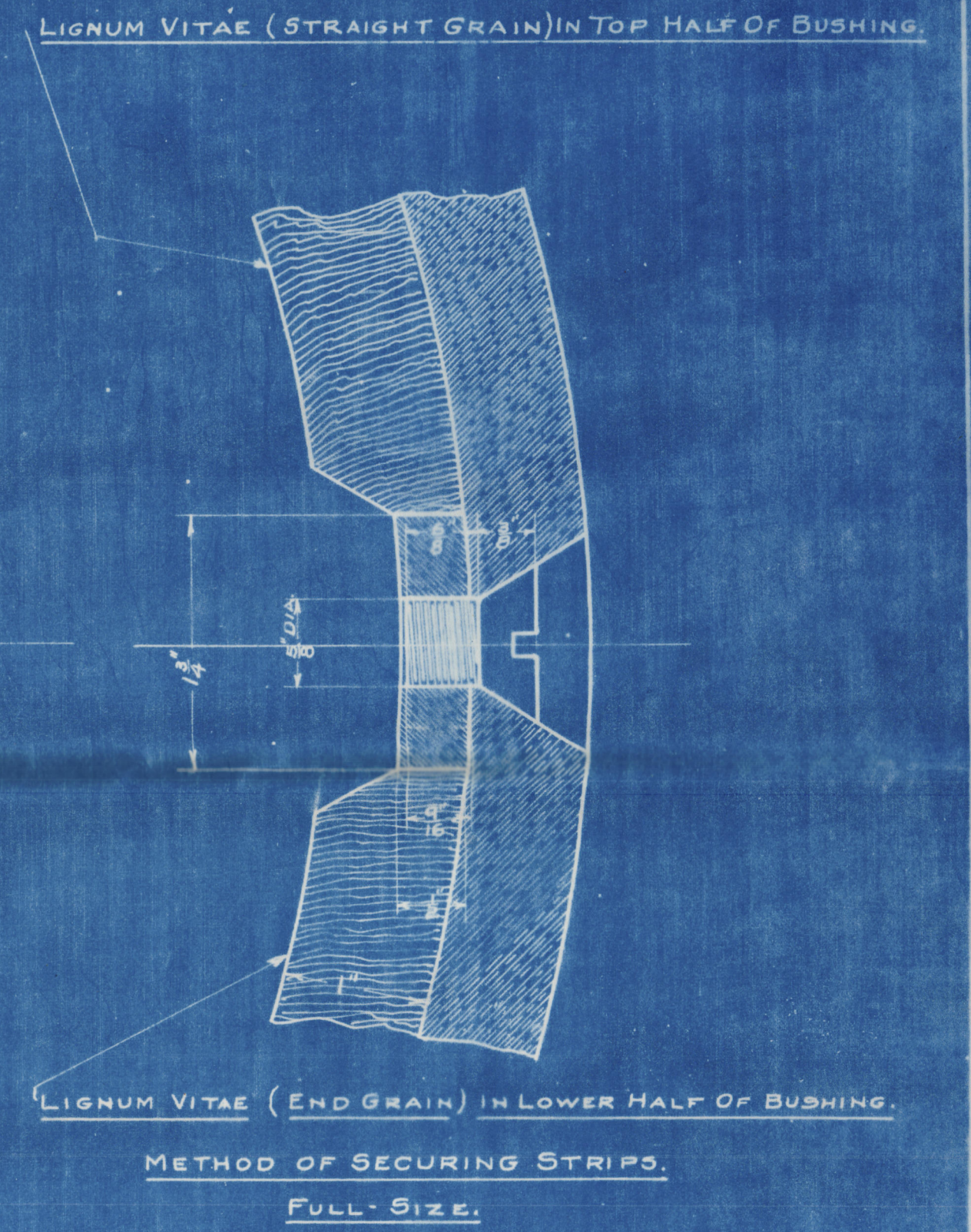
STERN TUBE.



PROPELLER SHAFT.
FORGED STEEL INGOT. FINISH ALL OVER.



INTERMEDIATE SHAFTING.
FORGED STEEL INGOT. FINISH ALL OVER.



NOTE: QUANTITIES GIVEN ARE FOR ONE ENGINE ONLY.

| QTY | DESCRIPTION | MATERIAL | PATTERN NO. |
|-----|---------------------------------------|--------------|-------------|
| 1 | STERN TUBE | CAST IRON | |
| 1 | GLAND | | |
| 1 | STERN TUBE NUT | CAST STEEL | |
| 1 | KEY | MILD STEEL | |
| 8 | SHAFT COUPLING BOLTS & NUTS | W. IRON | |
| 1 | BRASS STERN TUBE LINER | CUPRUM METAL | |
| 1 | PROPELLER SHAFT LINER | | |
| 1 | NECK BUSH | | |
| 1 | GUARD RING | | |
| 1 | GLAND BUSH | | |
| 1 | STERN BUSH KEYS | BRASS | |
| 6 | GLAND STUDS | | |
| 1 | INTERMEDIATE SHAFT | FORGED STEEL | |
| 1 | PROPELLER SHAFT | | |
| 1 | SPARE GEAR | | |
| 9 | COUPLING BOLTS & NUTS | | |
| 1 | PROPELLER SHAFT WITH LINER | | |
| 1 | STERN BUSH COMPLETE WITH WOOD FITTING | | |
| 1 | NECK RING | | |

TIDEWATER SHIPBUILDERS LTD.
STEEL SHIPBUILDERS,
THREE RIVERS, QUE., CANADA.

INTERMEDIATE & PROPELLER SHAFTING,
& STERN TUBE, 1800 H.P.
24\"/>

W367-0021