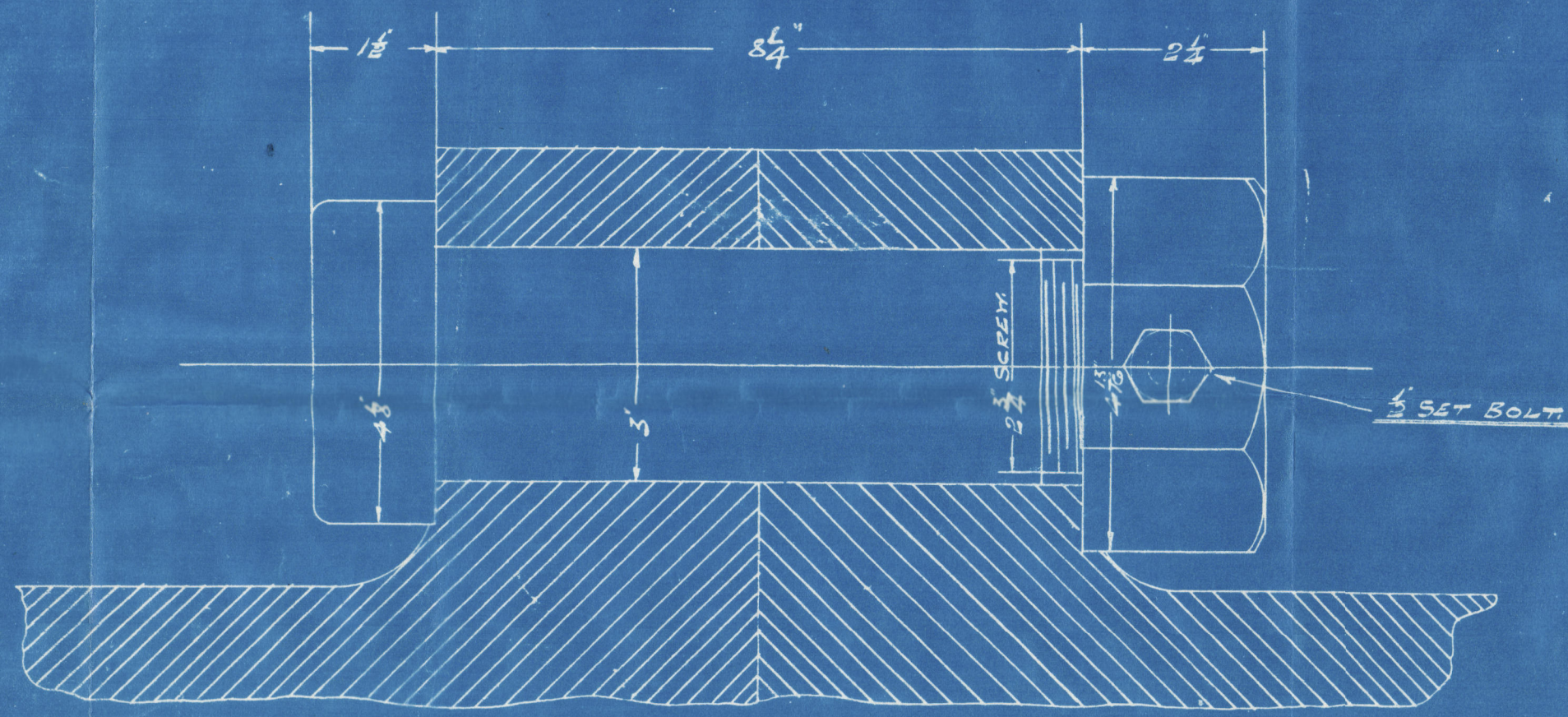
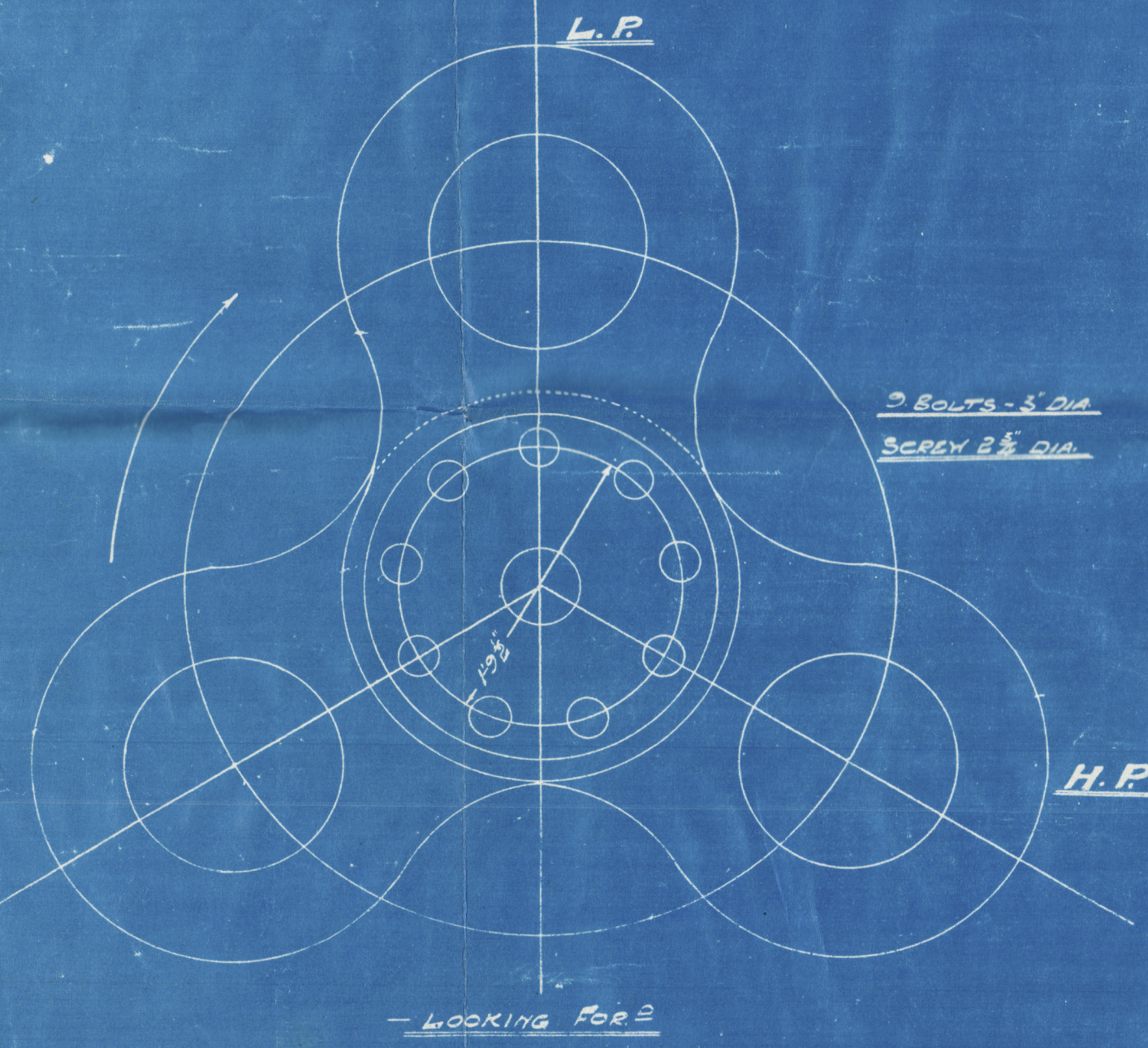


2 KEYS IN SHAFT
1-1/2\"/>



CRANK SHAFT TO BE MANUFACTURED UNDER SUPERVISION OF LLOYDS - C.S.I. INSPECTORS.
CRANK SHAFT PINS TO BE POLISHED ALL OVER.
CRANK WEBS TO BE FINISH MACHINED ON FACE AND ROUGH MACHINED ONLY ON SIDES.

—CRANK SHAFT— INGOT STEEL

THIS DRAWING IS TO THE BEST OF OUR KNOWLEDGE CORRECT, BUT NO RESPONSIBILITY IS TAKEN FOR INACCURACIES OR ALTERATIONS DURING CONSTRUCTION.
GEORGE CLARK LD.
HALIFAX SHIPYARD LTD.

ENG N°	N° OFF.	REMARKS	DATE
865	1 SET	WEBS TO BE POLISHED	24-2-06
881	1 SET	" " " "	15-3-06
3	1 SET	" " " "	19-5-20
4	1 "	" " " "	"

SPARES FOR ENG N° 3 - 1 SECTION.			
"	"	"	4 - 1 "
"	"	"	3 - 3 COUPLING BOLTS & NUTS COMPLETE
"	"	"	4 - 3 "

— COUPLING BOLT - HALF SIZE
FORGED WROT. / RON BOLTS & NUTS.

HT: Engine 29 1/2" x 50" x 80"
54"
Boiler 180 1/2 W.P.

9-2-20
793
APPROVED
LLOYD'S REGISTER OF SHIPBUILDERS
JUL 8 - 1920
NEW YORK
Lloyd's Register Foundation

W367-0016



11
Canadian
cruiser 11

CRANKSHAFT

RETAIN



© 2021

Lloyd's Register
Foundation

W367-0016