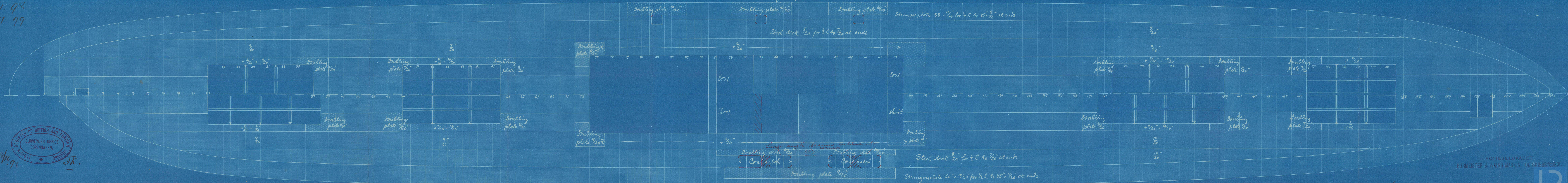


REGISTERED
SHIP
S 1513

4.11.98
22.11.99



No 210.

Scale 1/8" = 1'

Plan of Spar-deck

Stringerplate 58 x 1/2" for 1/2" L to 45" x 8" at ends

Steel deck 3/20 for 1/2" L to 45" at ends

Stringerplate 60 x 10/20 for 1/2" L to 45" x 8" at ends

Steel deck 3/20 for 1/2" L to 45" at ends

Large angle frames welded at

Coal hatch

Coal hatch

Doubling plate 10/20

Doubling plate 10/20

Doubling plate 10/20

Doubling plate 10/20

Doubling plate 10/20

Doubling plate 10/20

Doubling plate 10/20

Doubling plate 10/20

Doubling plate 10/20

Doubling plate 10/20

Doubling plate 10/20

REGISTER OF BRITISH AND FOREIGN
SURVEYORS OFFICE
COPENHAGEN.
LLOYD'S
24/10/98
Jk.

ACTIESELSKABET
BURMEISTER & WAINSKIN- OG SKIBBYGGERI.

4/1/98

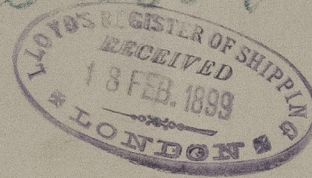
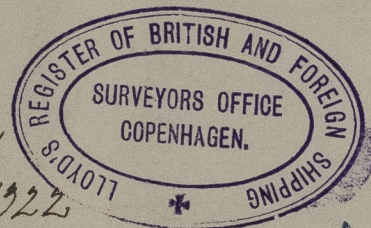
W360 B2 - 0005

© 2021
Lloyd's Register
Foundation

Approved
Maindeck plan
or
Spardack plan
at
B & N's 5/8 N^o 210.

W36082 - 0003

4/11. 98.
St. Manchuria
Copenhagen 1922
Guard Book Book
Bo 7



© 2021

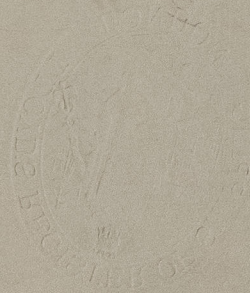
Lloyd's Register
Foundation



0003

57 W 43

1711



© 2021

Lloyd's Register
Foundation