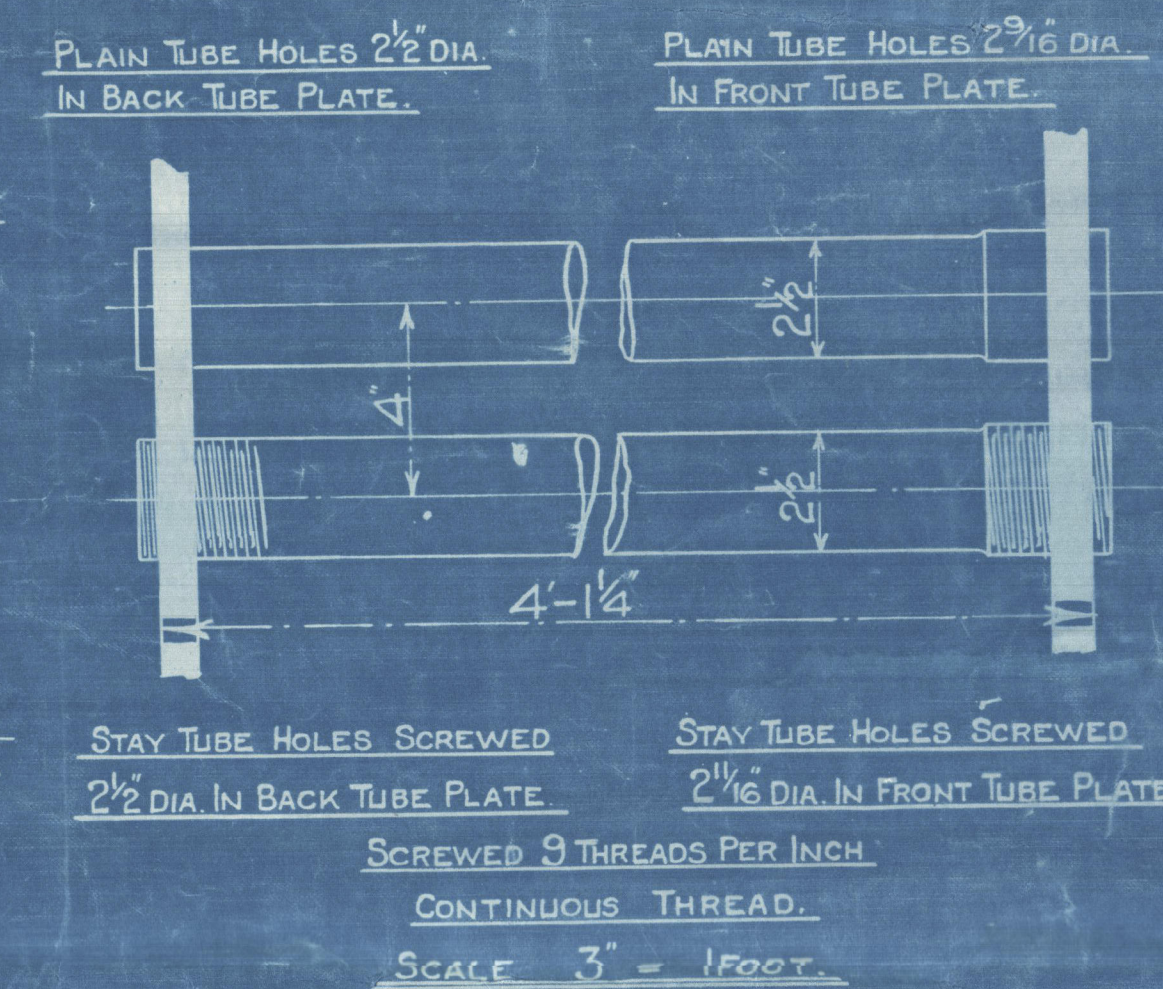


HORIZONTAL FLUE TUBES.



	LAYS		
PLATE	$2-663$	-84375×100	$=68.2\%$
	$100(23 \times 55914 \times 2 \times 1)$		$=68.8\%$
RIVETS	$28 \times 828375 \times 46875$		
FRONT TUBE PLATE	$4-3825 \times 100$		$=34.4\%$
BACK TUBE PLATE	$4-2.5 \times 100$		$=37.5\%$
	$(15-2) \times 78$		$=110 \text{ LBS.}$
SHELL	$(26-2) \times 26 \times (2-625) \times 100$		
	$2.9 \times 72.75 \times 4$		$=101.8 \text{ LBS.}$
FRONT TUBE PLATE	$(23-2) \times 26 \times (2-5) \times 100$		
	$2.9 \times 62.5 \times 4$		$=107.9 \text{ LBS.}$
BACK TUBE PLATE	$275(16-1)$		$=125 \text{ LBS.}$
FURNACE	$140(27-1) \times 78$		$=101.1 \text{ LBS.}$
QUEE RING	$78(78-66)$		

HEATING SURFACE	
TUBES	416.Sq.Ft.
PLATE	84.Sq.Ft.
TOTAL	500.Sq.Ft.
GRATE AREA	22.5.Sq.Ft.

MANHOLE & MUDHOLE DOORS TO HAVE STUDS SCREWED THROUGH PLATES & FITTED WITH NUTS INSIDE.

*This Drawing N^o 12717, submitted 5-8-24 for
Boiler N^o 9707. Tested by M. Nicholas 8-8-24*

6'-6" x 14'-6" x 500# x 100 LBS.

NIR

W36-0155

DRAWING №12717

STANDARD SURVEY—LLOYDS.

COCHRAN & CO. ANNAN LTD.
ENGINEERS & BOILERMAKERS
ANNAN, SCOTLAND.

COCHRAN & CO., ANNAN, LD.

Boiler No. 9254

Drawing No. 12717.

W.P. 100 lbs.

GLASGOW REPORT No. 44565-

Mr. Fella Tripp
No. 11818.

also for
Mr. Cellina
Feltre
Rialto.

W 36 - 0155



© 2020

Lloyd's Register
Foundation