

Motore DL 646

Tav. 1431

Dis 96502

$$R = 44 \div 50$$

$$D = 29 \div 25\% (L/\phi = 4)$$

Albero pompa a aria

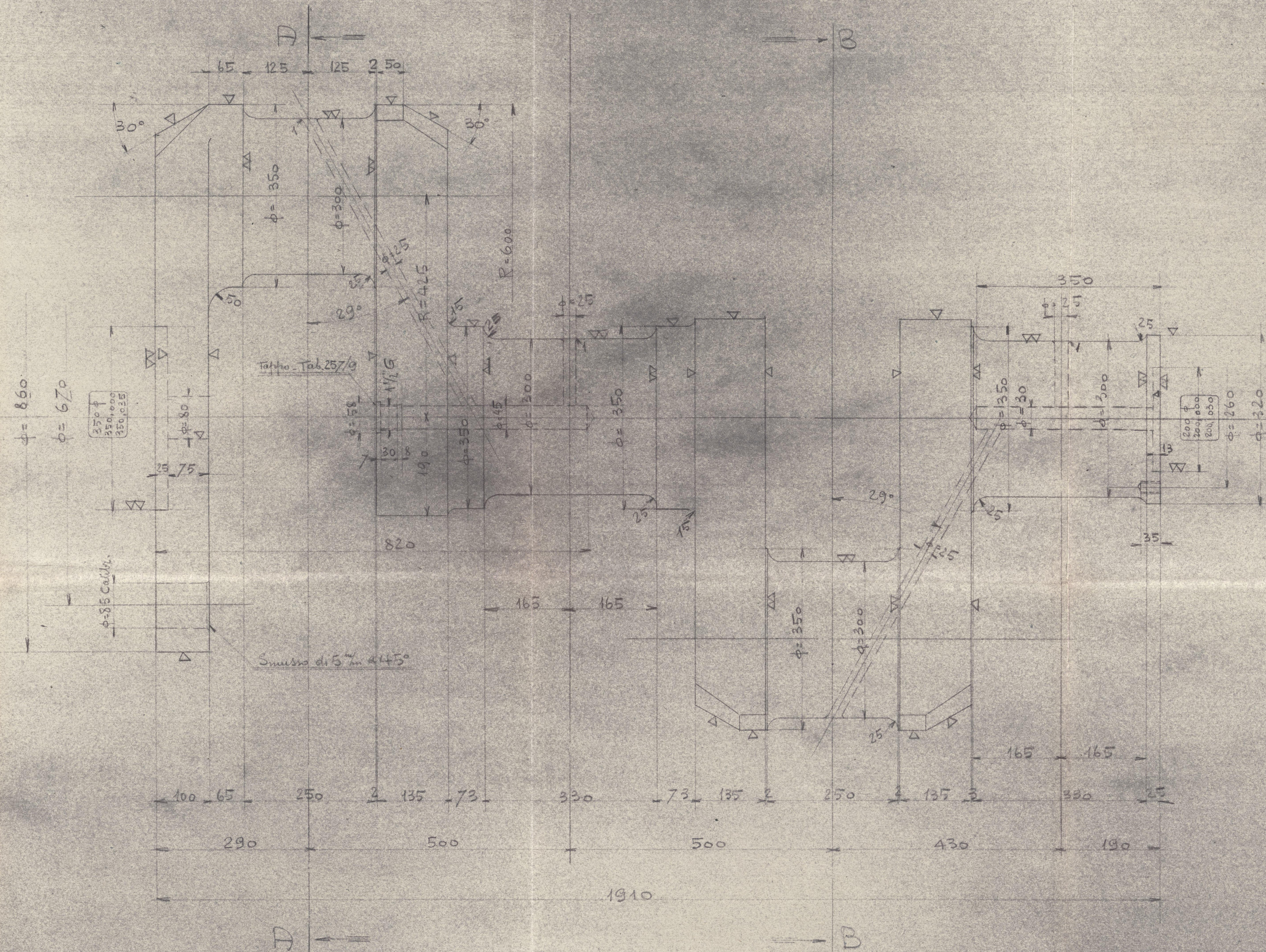
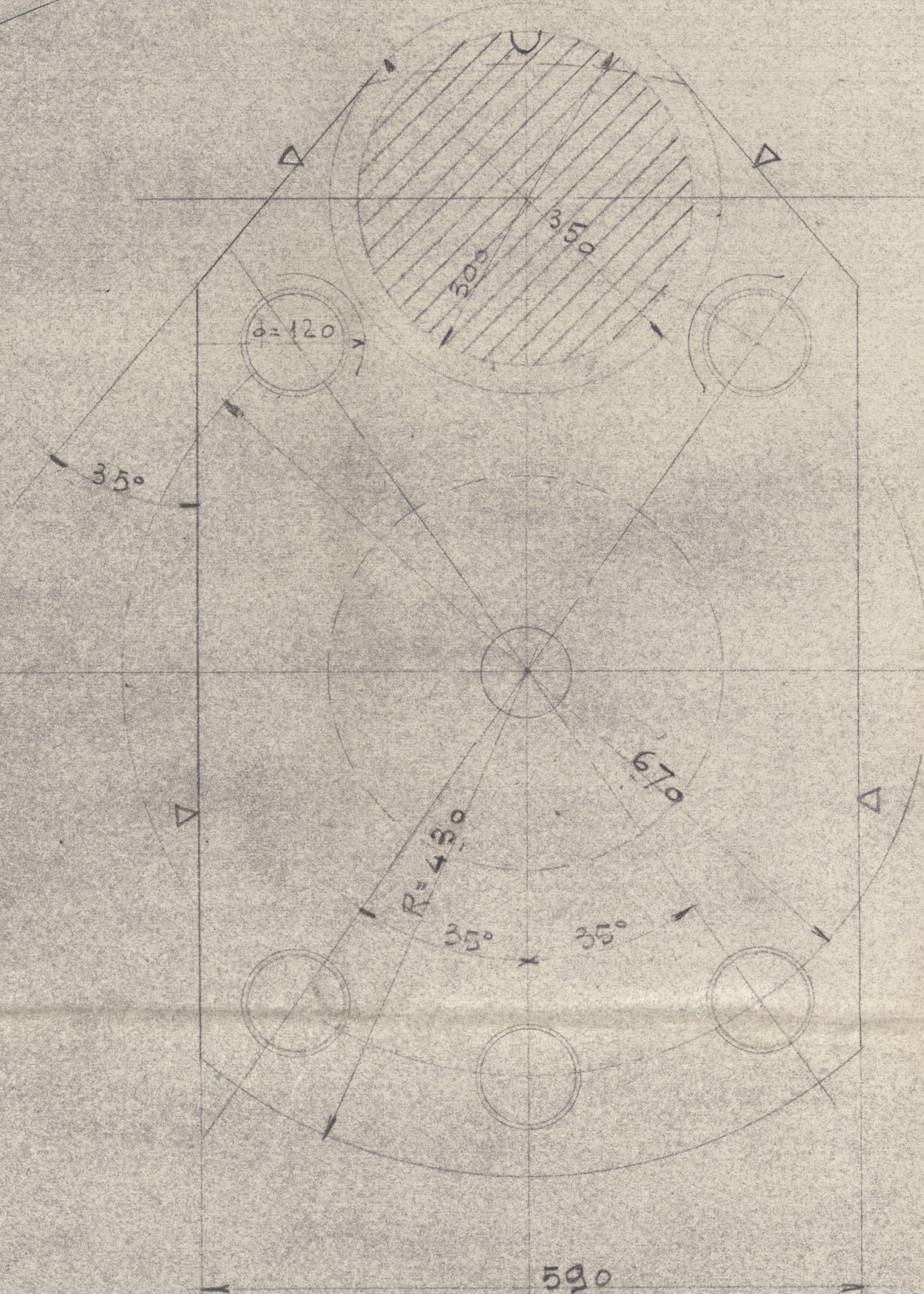
dis 16-1235

MV Zella Tri Rept No 11818.

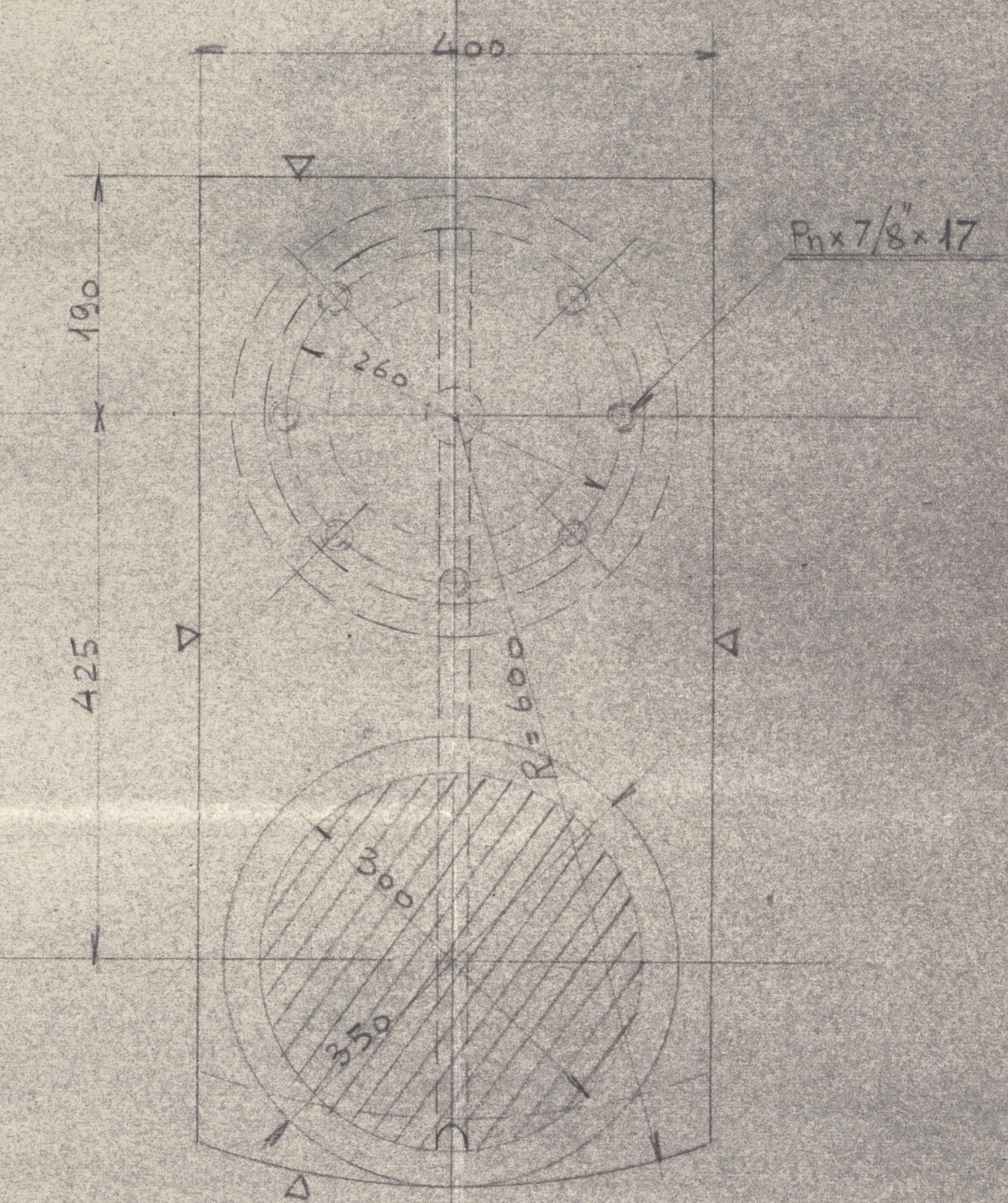
also for  
MV bellina.  
Yello  
Kiallo

Acciaio - 1 - trala 1.5

1. AA



1. BB



MR  
21.1.36.