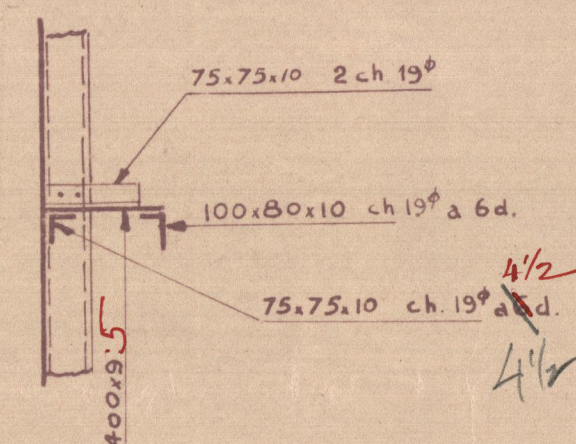
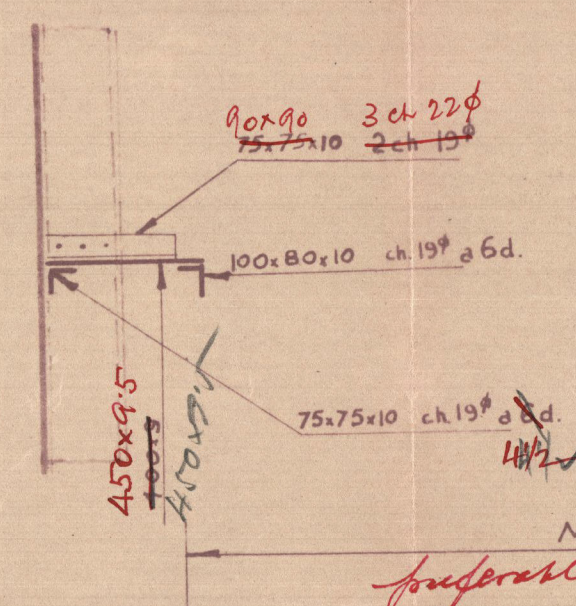


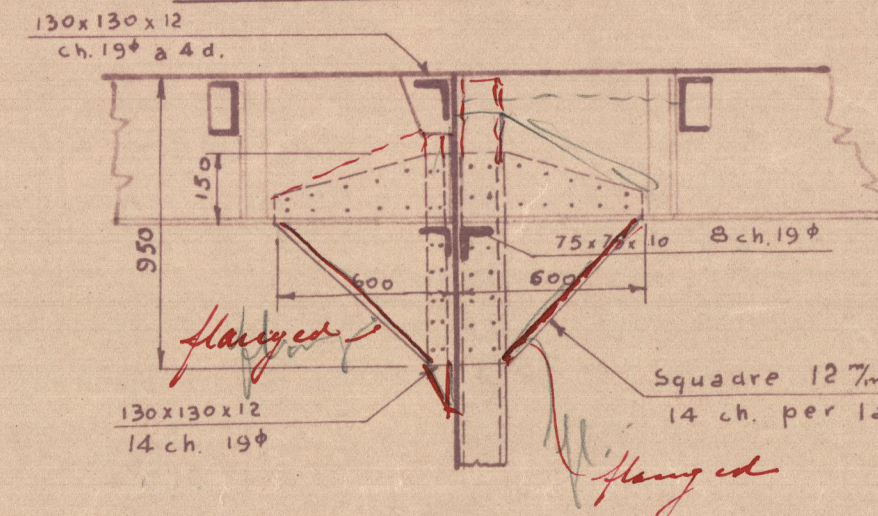
Particolare G



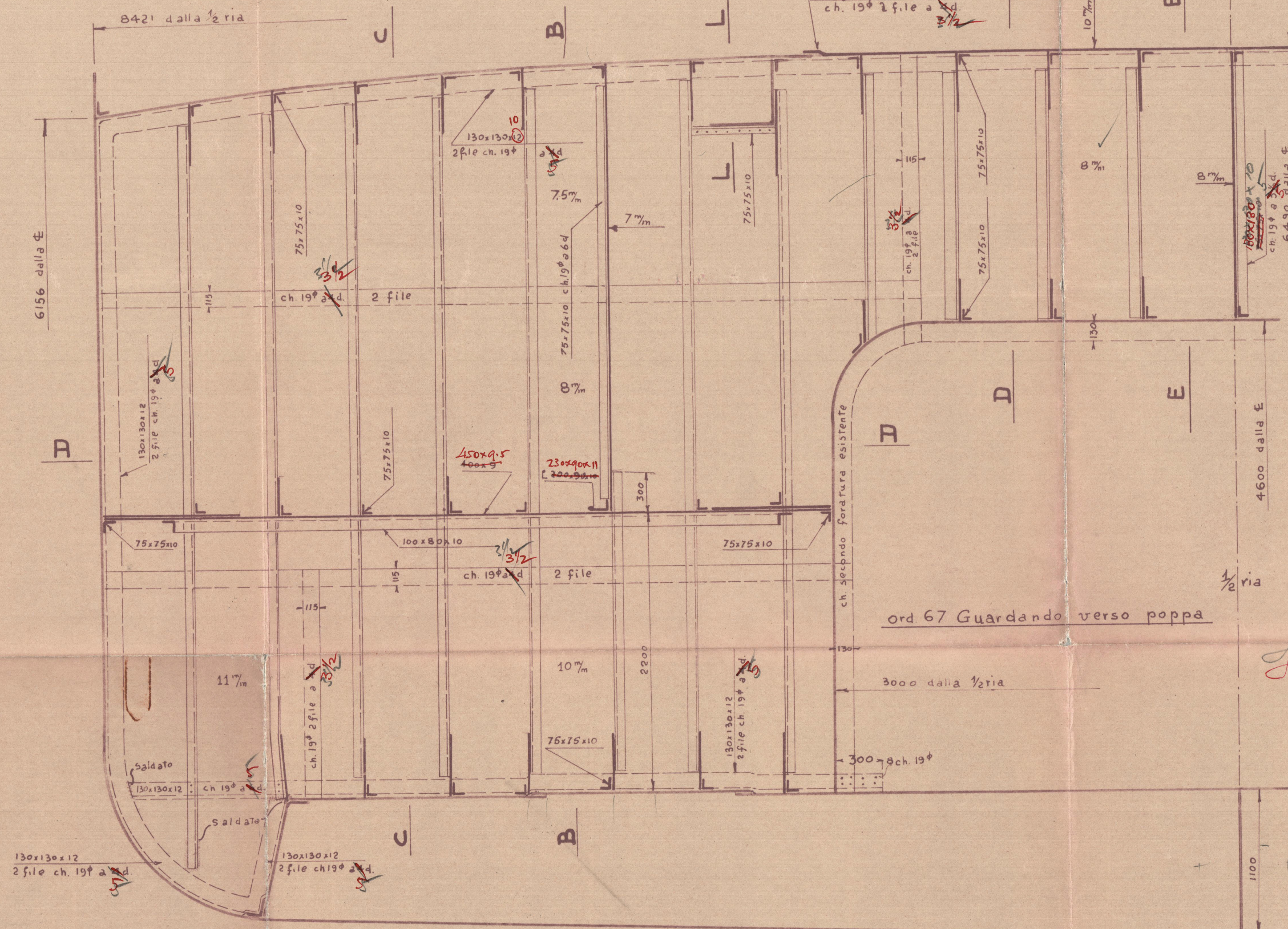
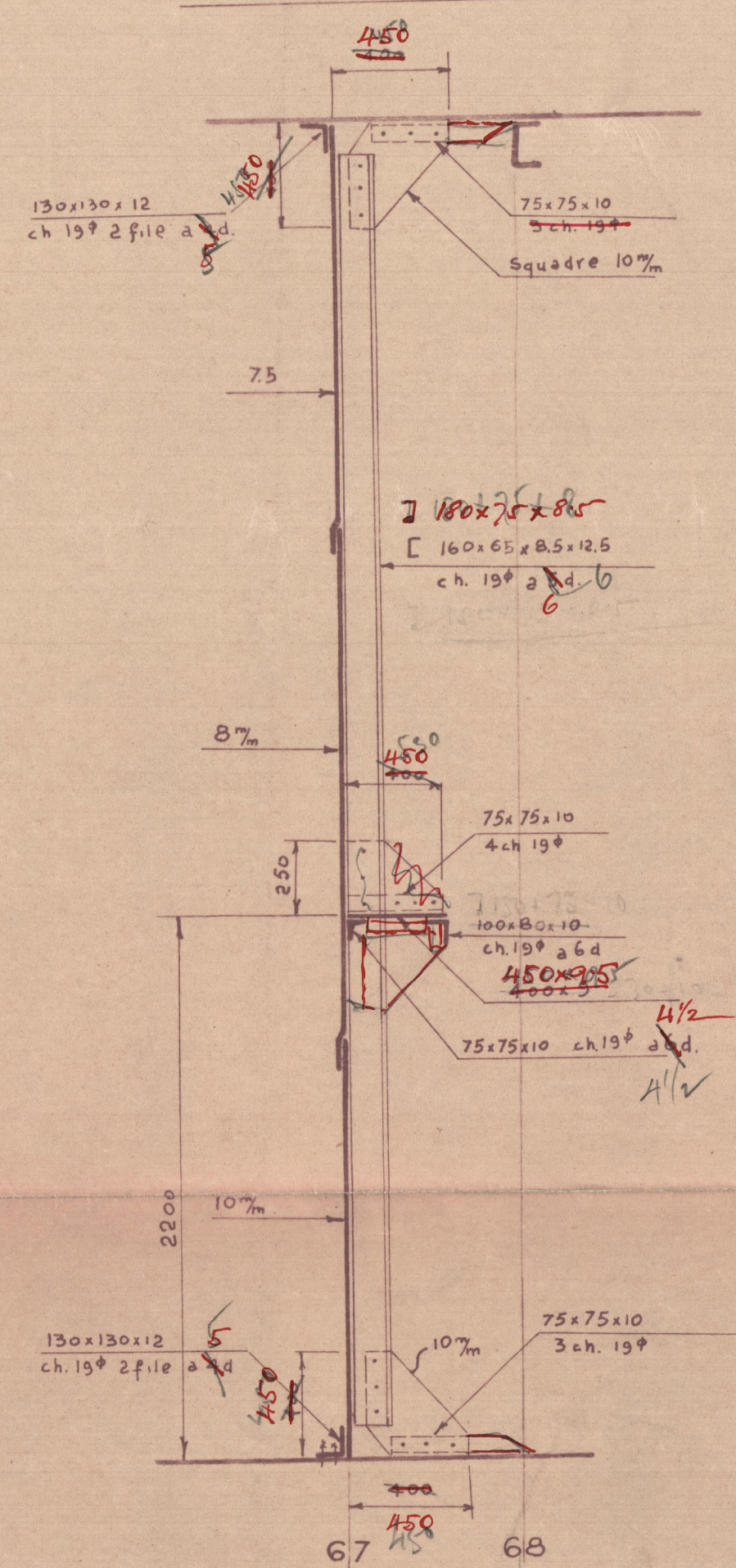
Particolare H



Sezione L-L



Sezione C-C



NB! Togliere le costole ed i mezzi bagli alla ord. 67.

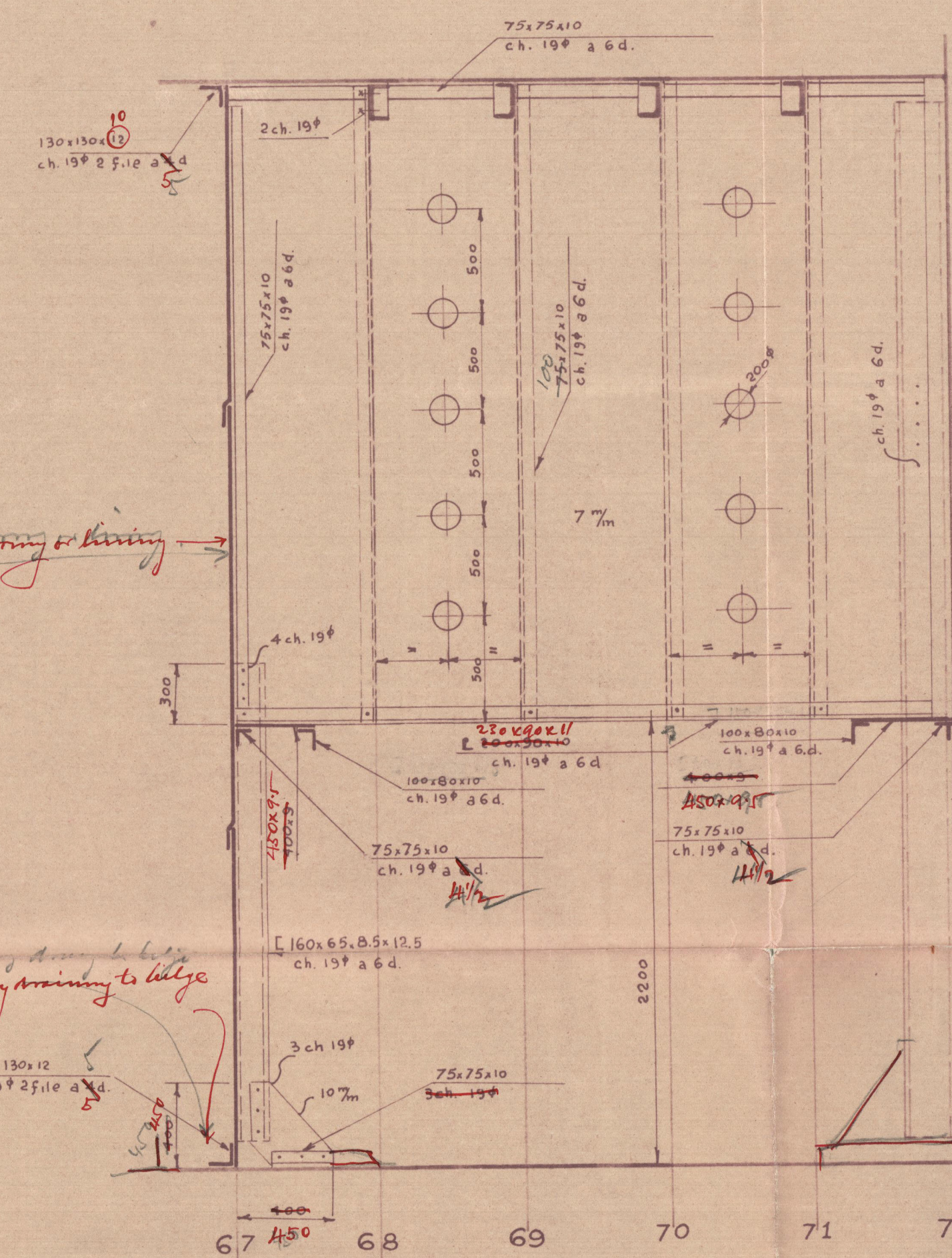
Togliere il montante centrale della paratia ord. 72

Tagliare per 100% in 1/2 ria i bagli del ponte e del cielo del recesso

Portare il battente prodiero della boccaporta a 300% a poppa della 67

Per il nuovo battente utilizza le parti del vecchio

Sezione B-B

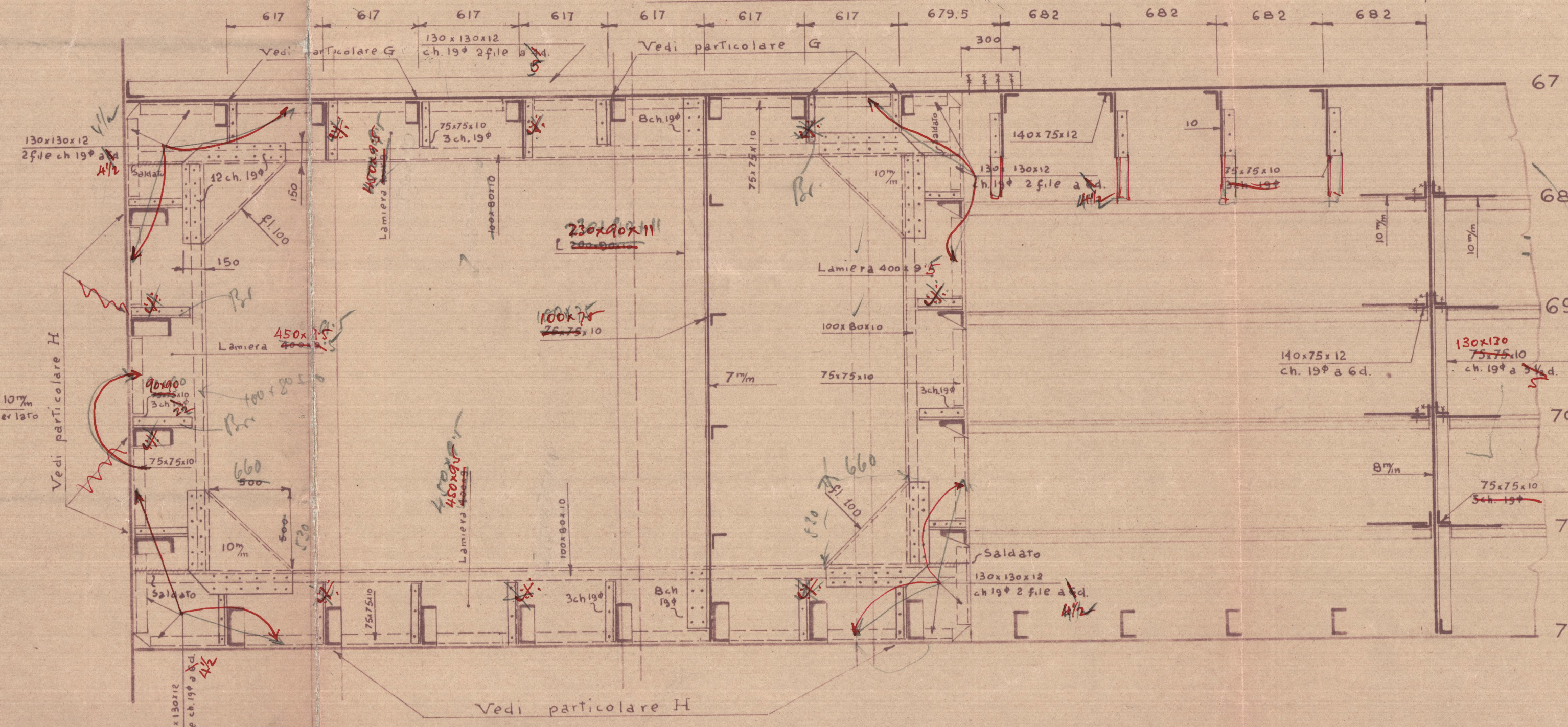


Flank part of oil fuel to be above 150°F and equivalent of section 20 of H. Rules, when applicable, to be complied with.

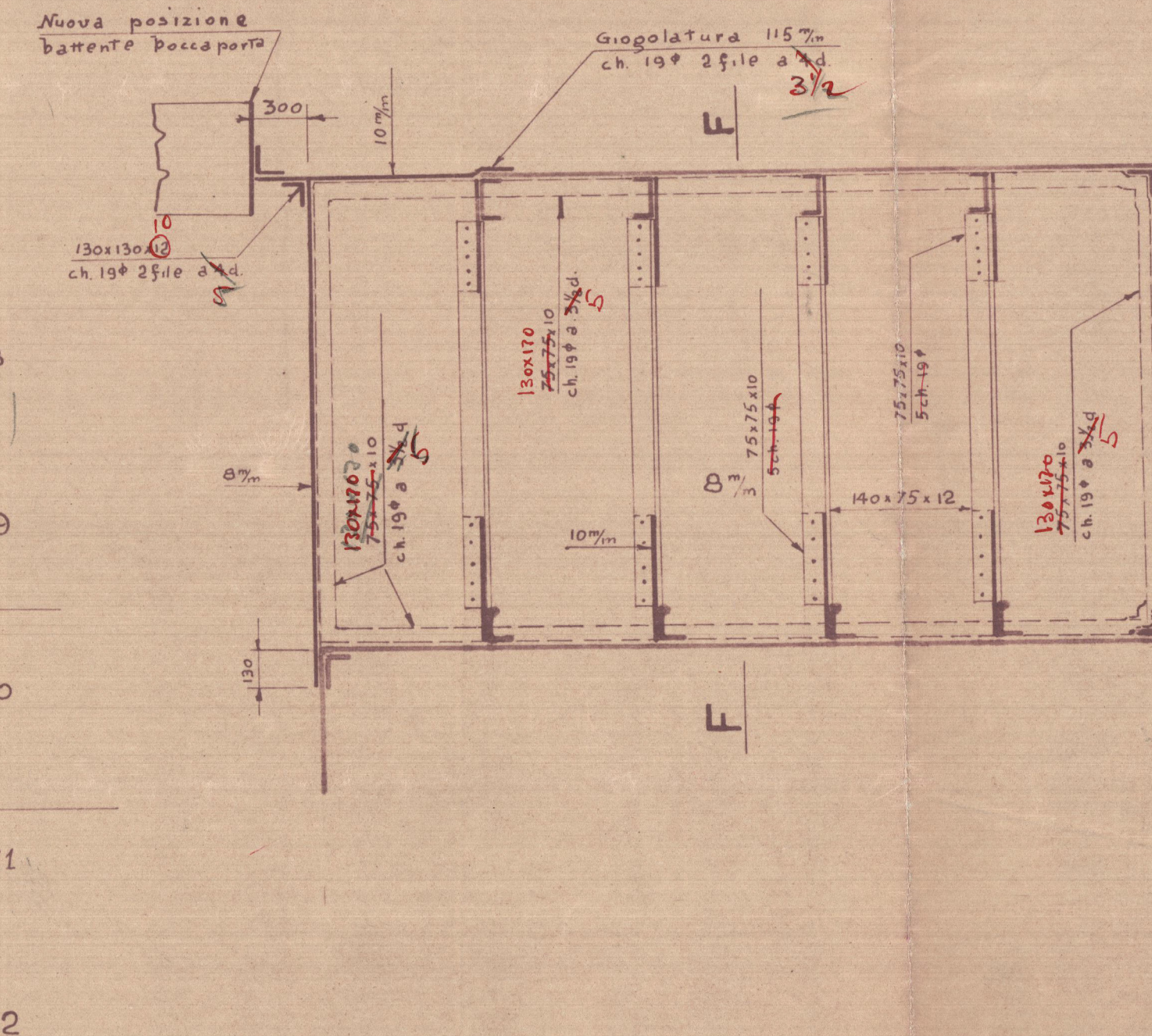
M.V. Zella. Tri. Rpt. M. 11818.

Also for
M.V. bellina
Zella
Rialto

Sezione A-A



Sezione E-E



Sezione D-D

Sezione F-F

APPROVATO

2 2 1936

LOYD'S REGISTER OF SHIPPING
TRIESTE

M. Feltre
e Rialto

disterna ord 67-72

23-12-36

LR

© 2020
Lloyd's Register
FOW 16-0151