

© 2020

Lloyd's Register
Foundation

W34-0113

TAV. N. 4207	DIS. N. 98585	Scala 1:10	Mater. Acc *	Mod. N.
--------------	---------------	------------	--------------	---------

TAV. N. 4207

DIS. N. 98585

Scala 4:40

Mater. Acc *

Mod. N.

Linca d'assi

Allen - per negoziata

MOTORE
TIPO

Quantità

TENSILE STRENGTH
* R = 44 + 50 Kg/mm²
ELONGATION
Δ = 20 ÷ 25 % (L/φ = 4)

DL46M/N

tr. FELLA

202541-2544

DIMENSIONI

Ordinario all'esterno
Finito

PESO IN KG

GREZZO

FINITO

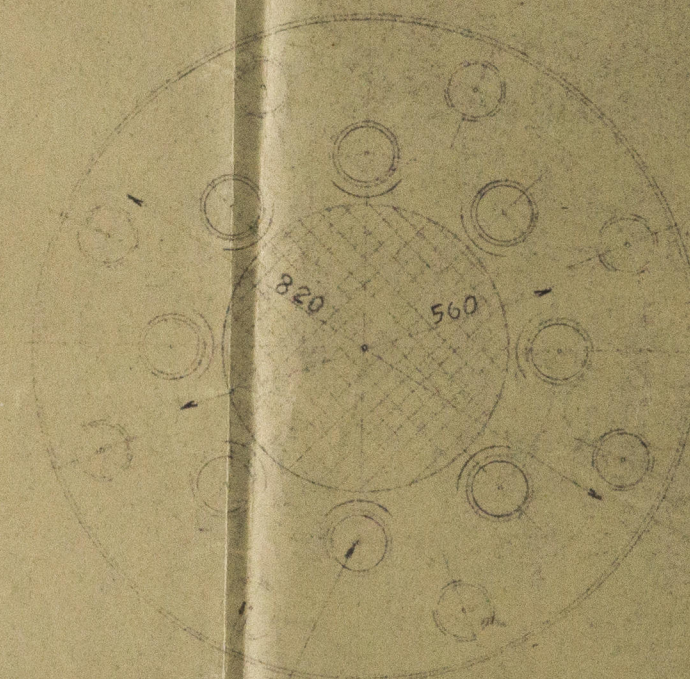
3500~

DIS.

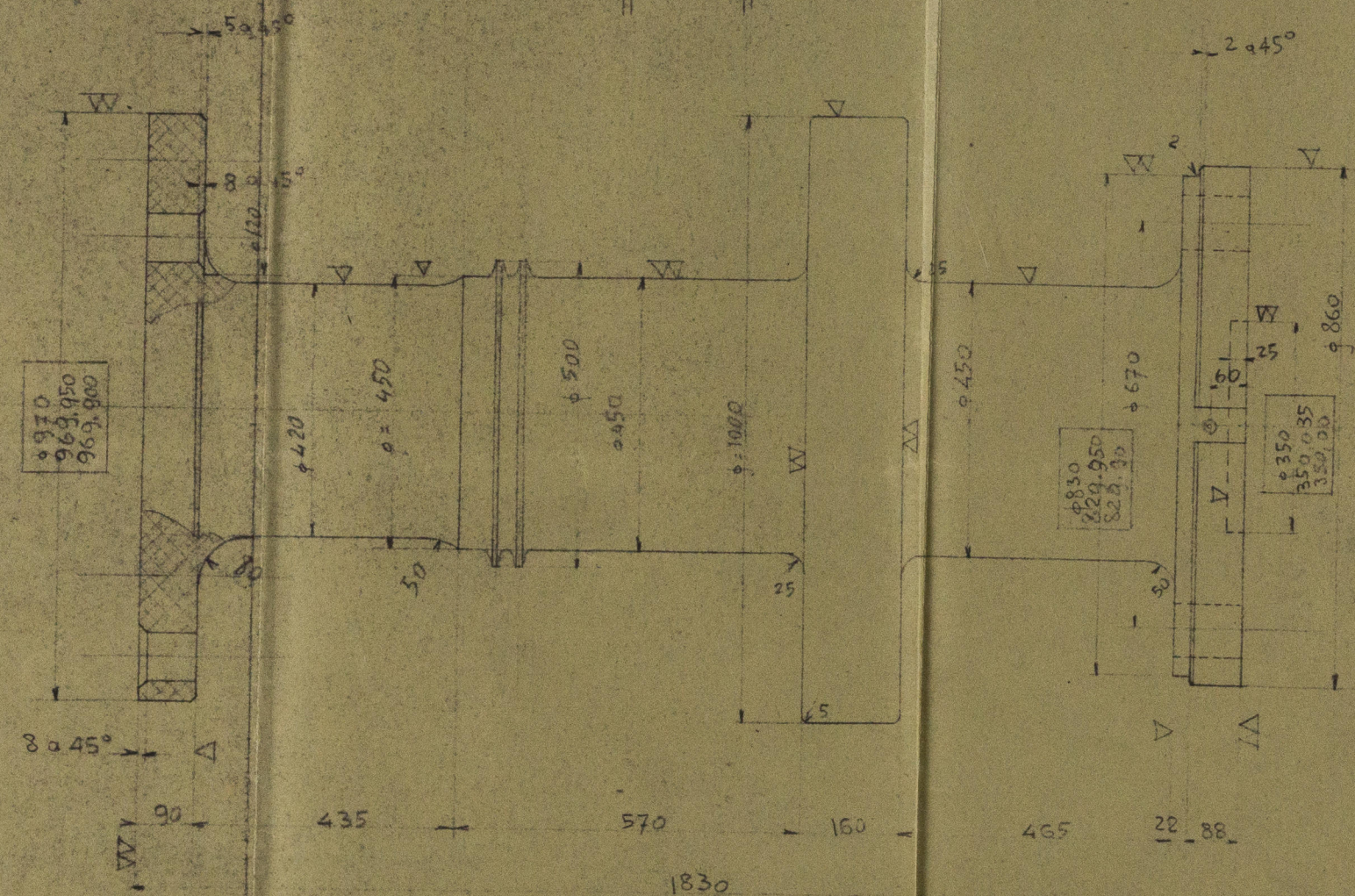
LUC.

CONT.

DATA 11.2.34

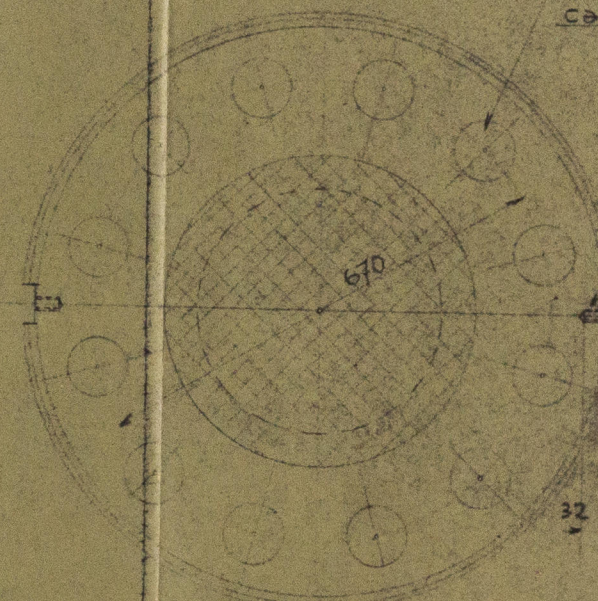


N^o 8 fori $\phi 78$
calibrati



MOTOR VESSELS: "FELLA" - "CELLINI" - "FELTRE" - "RIALTO"

THRUST SHAFT



N° 12 fori a 90
calibrati

Foro di $5/8"$
vite trale. 204 / 7

M.V. Yella Tri Rept
No 11818.

also for
MV. Bellina.
" Feltre.
" Rivolto.

NR
28. 2. 36.

Lloyd's Register
Foundation

436 - 0113