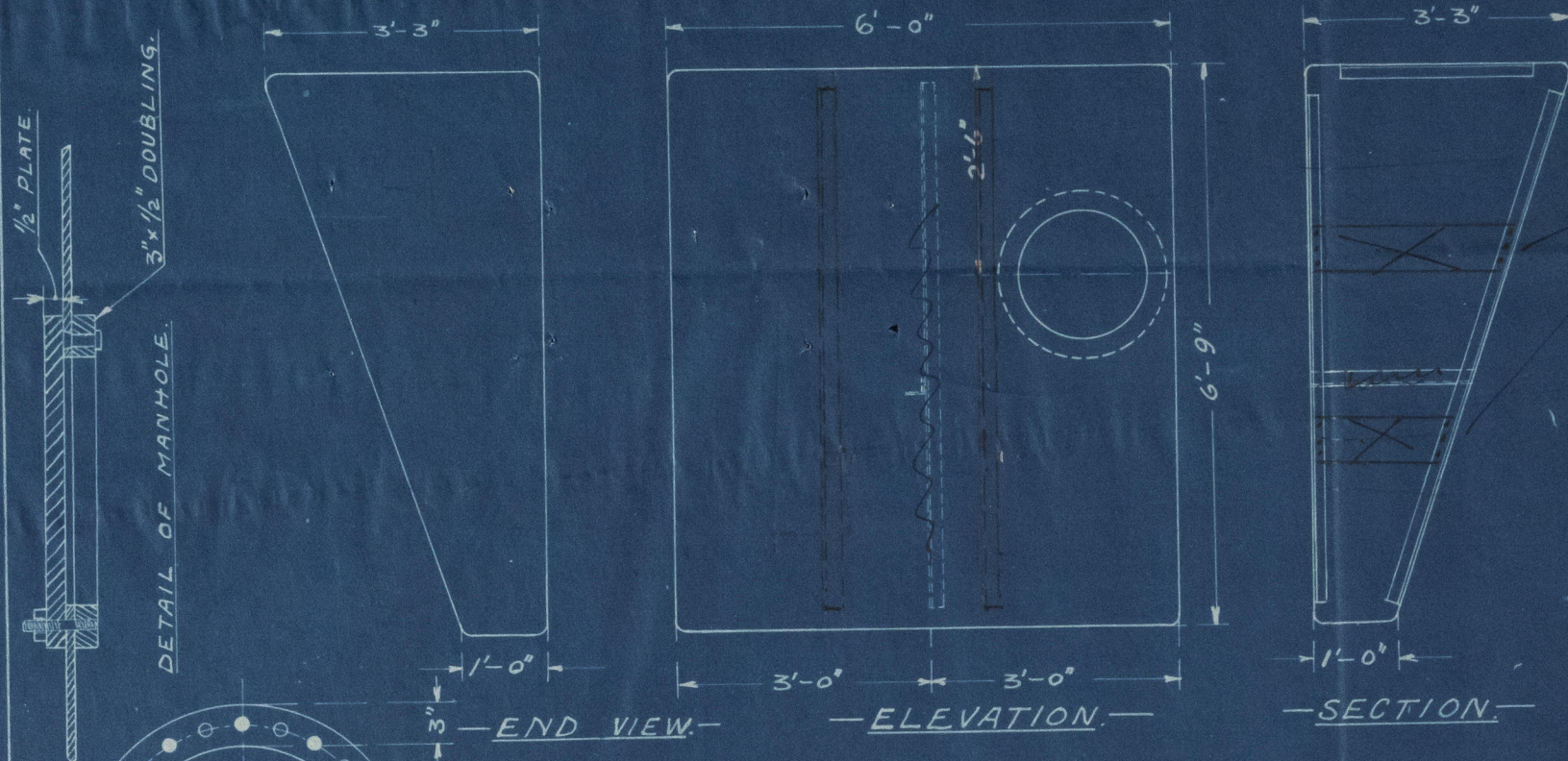


ELFLEDA.

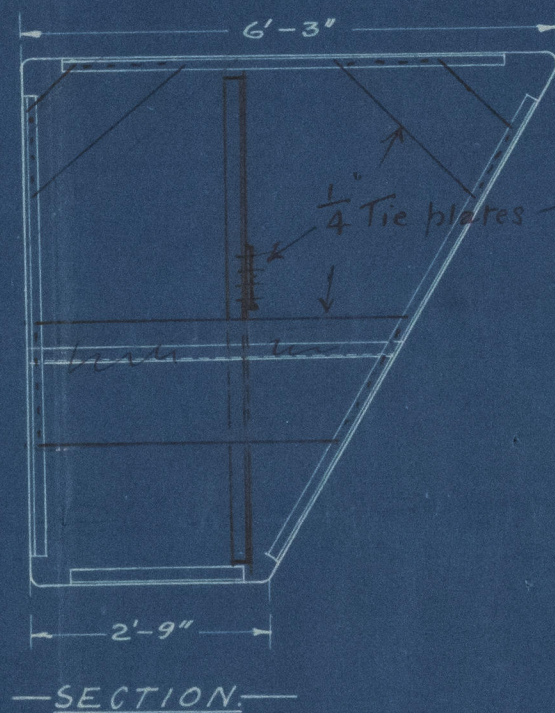
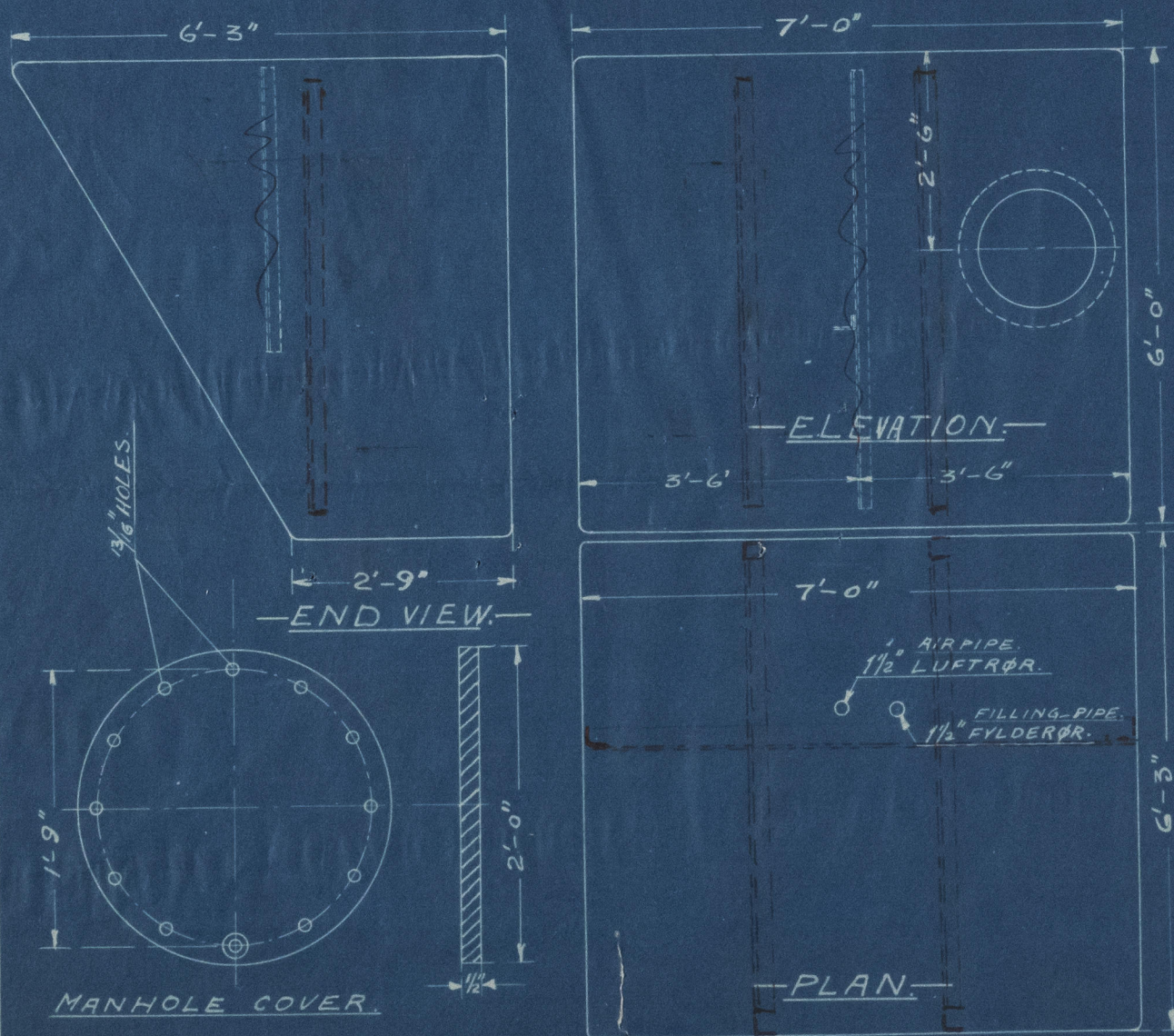
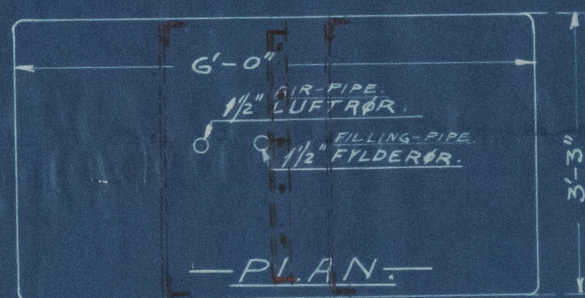
OIL TANKS IN ENGINE ROOM.
FRAMNÆ S. MEK. VERKSTED. PR. SANDEFJORD.

10-2-15.



6" x 1/4" Tie bars 1/2" rivets.

TANKS TO BE BUILT OF 1/4" PLATE;
BREADTH OF SEAMS AND BUTTS: 3 3/4";
DOUBLE CHAIN RIVETING, 5/8" DIA. OF RIVETS,
2" PITCH; END PLATES FLANGED AND
DOUBLE RIVETED TO SIDES.
ANGLE STAYS: 2" x 2" x 1/4".
TANKS TO BE TESTED WITH 12' HEAD OF WATER.
All seams to be caulked.



S.J.S.
19.2.15



Lloyd's Register
Foundation

ELFLEDA

AIA 1477

Guard Book ^{oil fuel}
_{tanks}

Box 5

Elfleda



© 2021

Lloyd's Register
Foundation