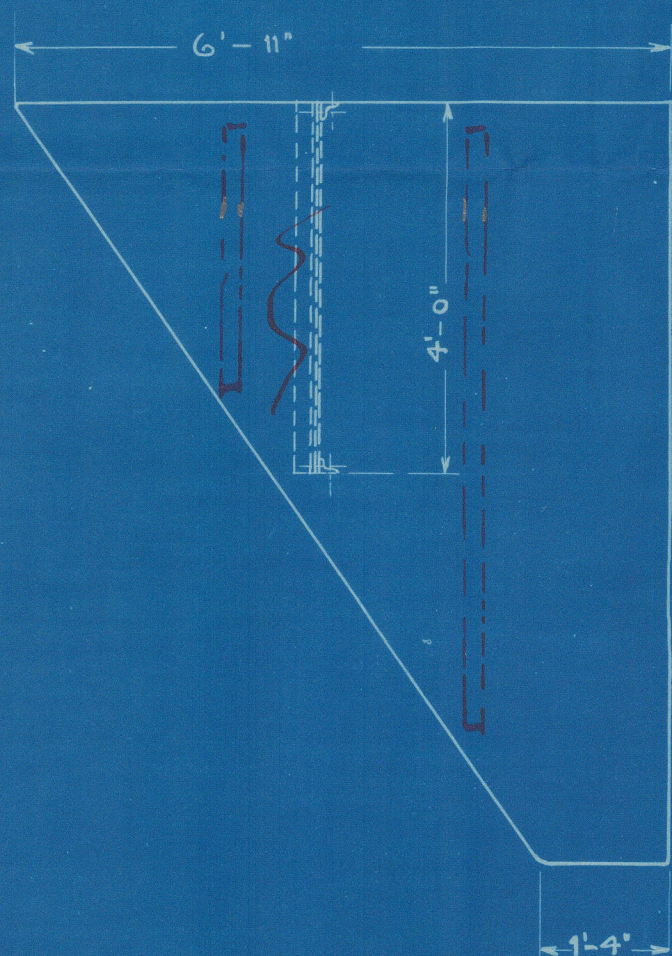
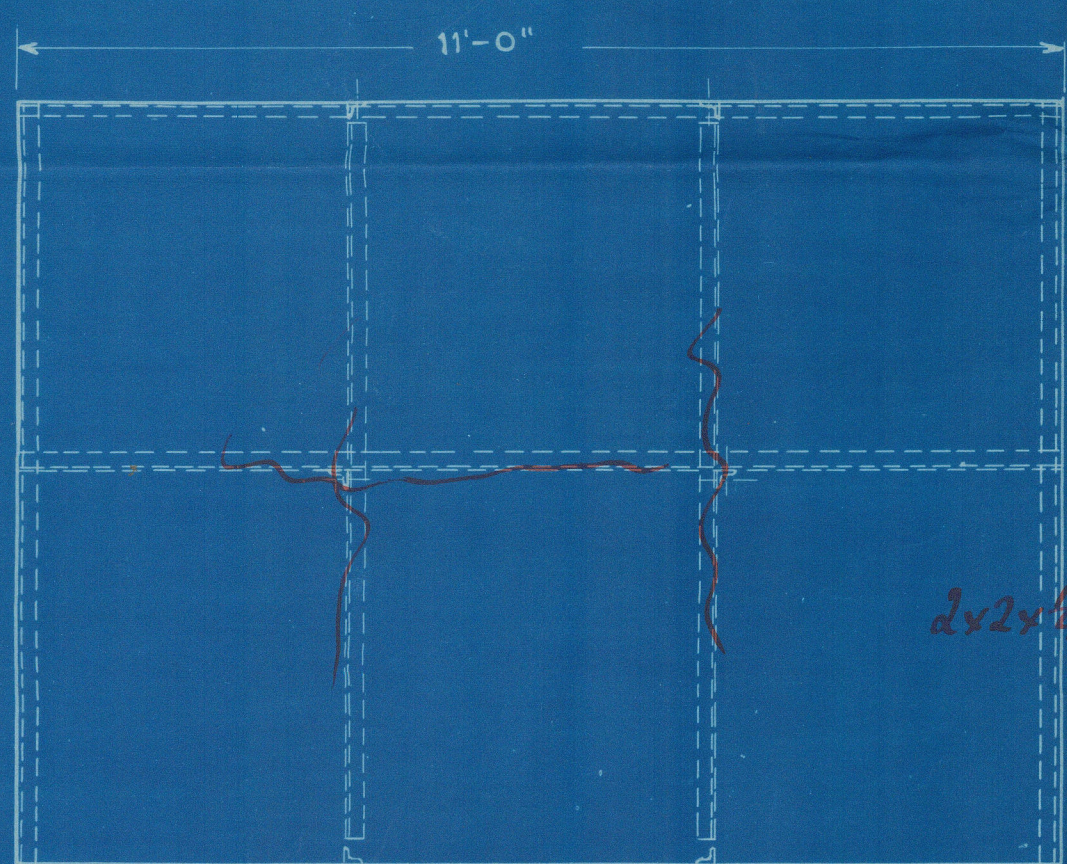


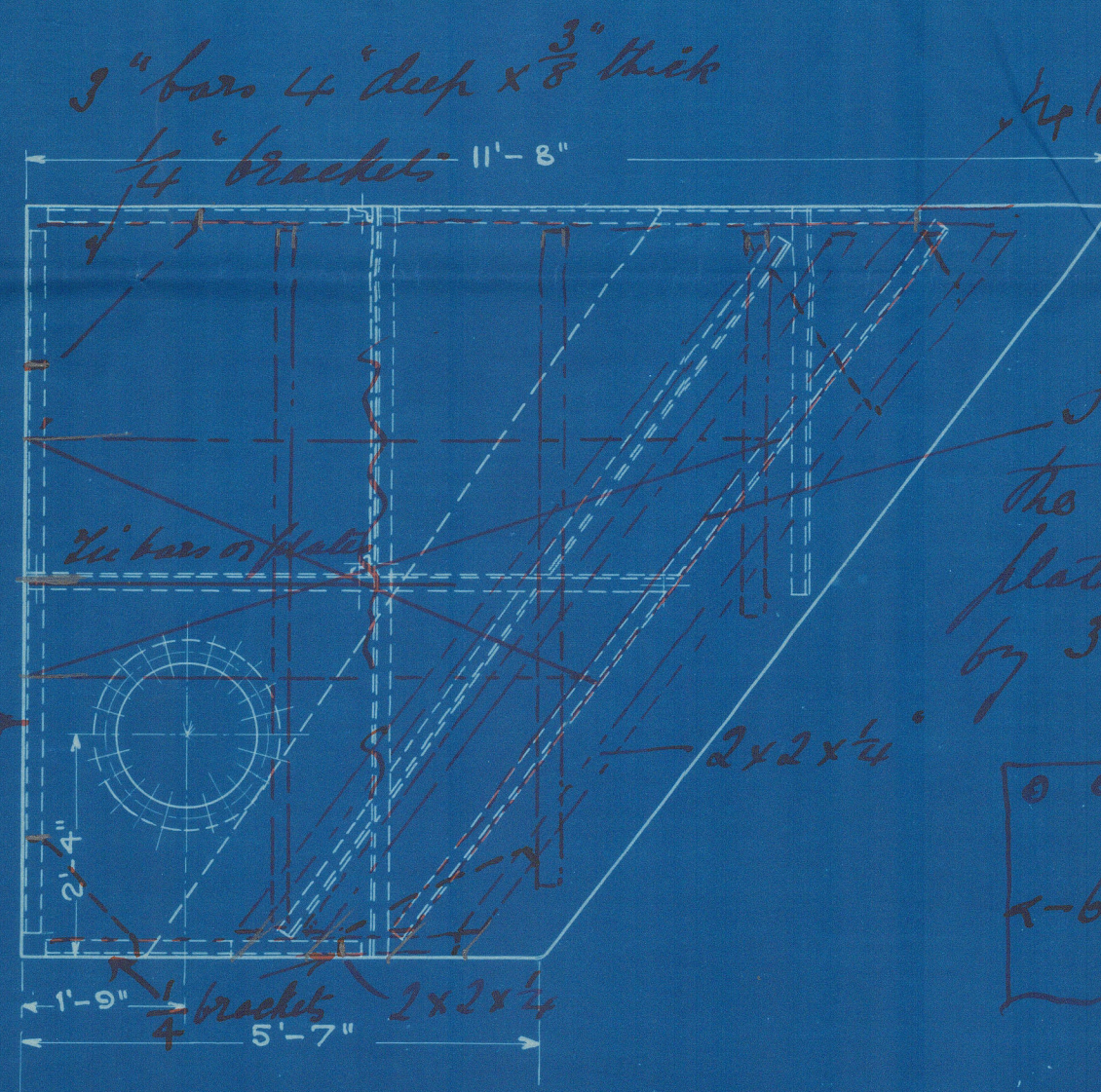
19/2/15



END VIEW

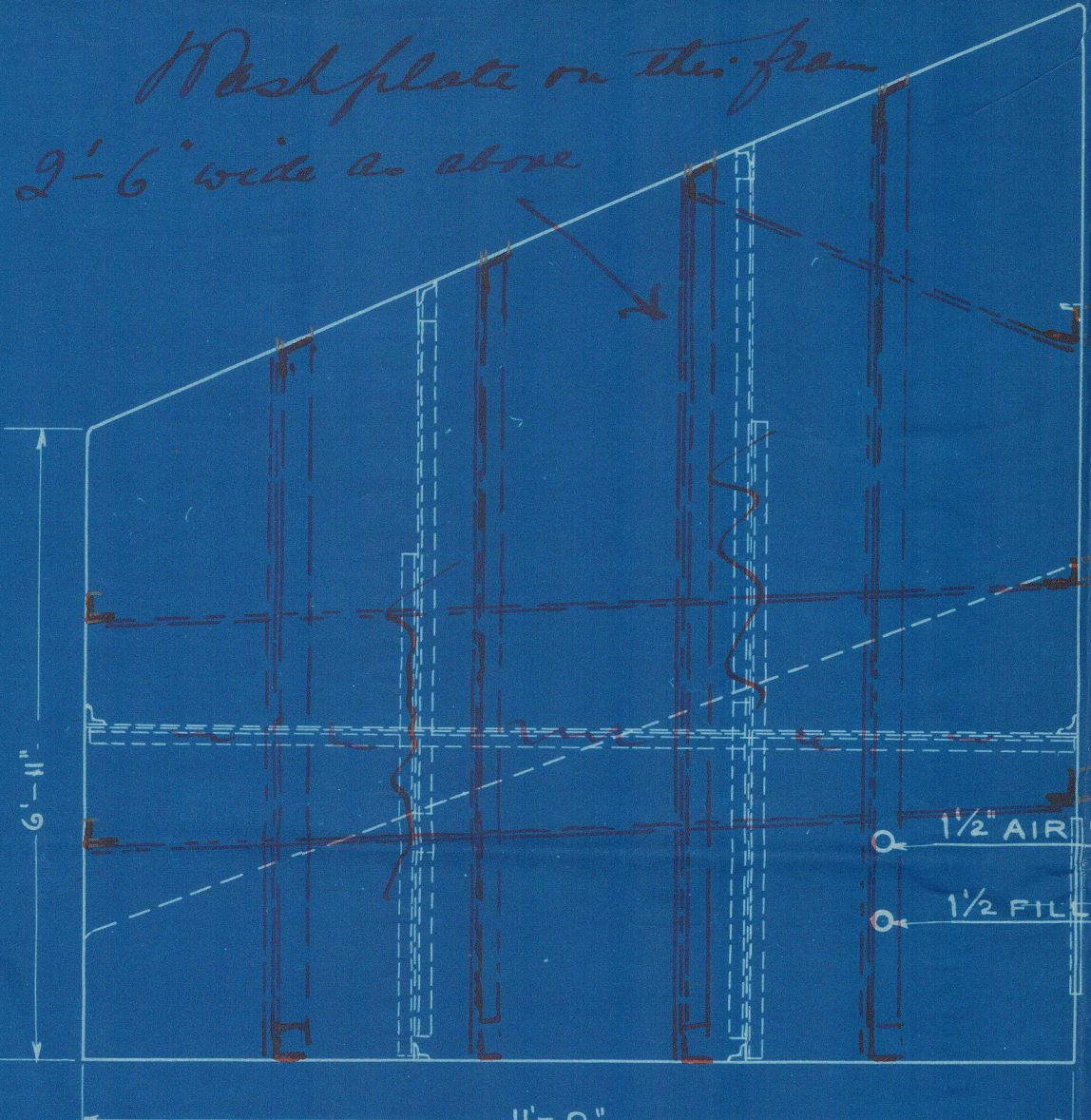
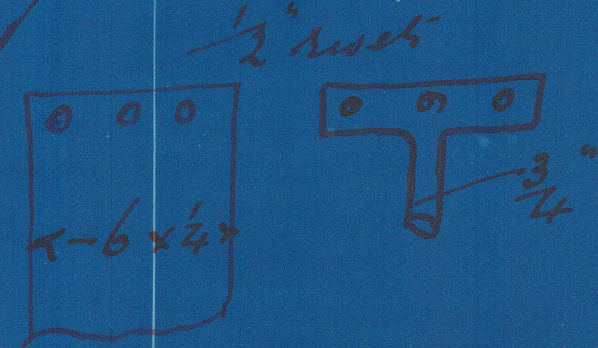


ELEVATION



END VIEW

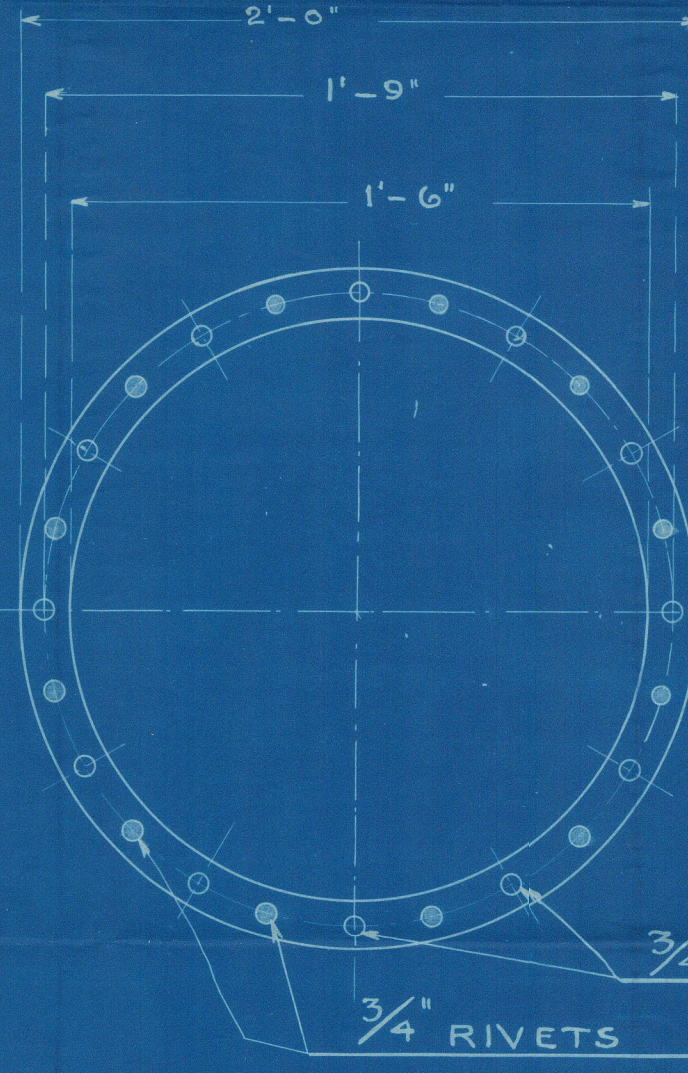
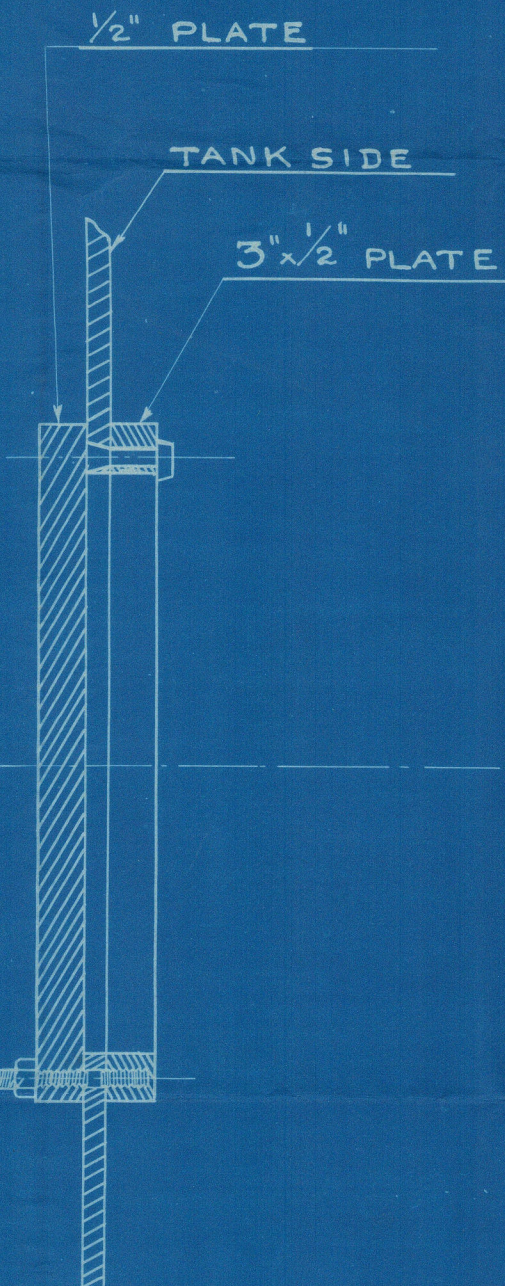
This frame tied by wash plate the other to be tied by lattice plate or bar strap secured to frame by 3 rivets.



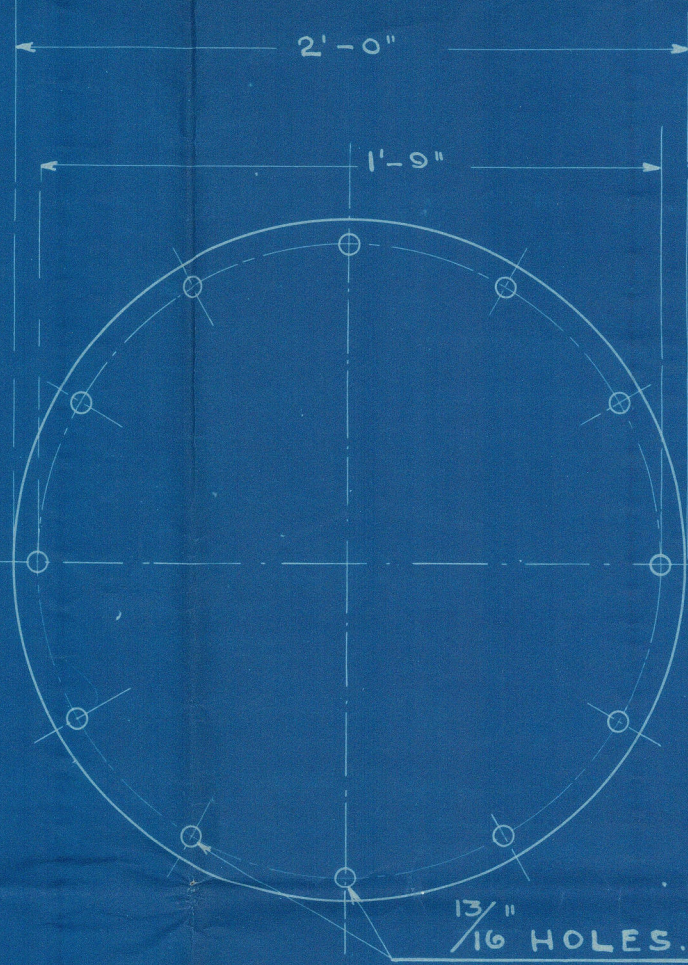
PLAN

TANKS TO BE BUILT OF  $\frac{1}{4}$ " PLATES, BREADTH OF SEAMS AND BUTTS  $3\frac{3}{4}$ " DOUBLE CHAIN RIVETING,  $\frac{5}{8}$ " DIAM. OF RIVETS, 2" PITCH, END PLATES FLANGED AND DOUBLE RIVETED TO SIDES.  
ANGLE STAYS  $2 \times 2 \times \frac{1}{4}$ " 15'-0"  
TANKS TO BE TESTED WITH 12'-0" HEAD OF WATER.

Seams to be caulked



DETAIL OF MANHOLE



ELFLEDA

OIL TANKS.

SCALE  $\frac{1}{2}$ " = ONE FEET

FRANKESEN & VÆRSTED

FRANKESEN & VÆRSTED, NORWAY.

ENR. NO. 102-1915

TEGNET AV O.C.S. TRACED AV

TEGNECHEF

APPROBERET AV

ORDRE NO.

HYLDE No. 2554



