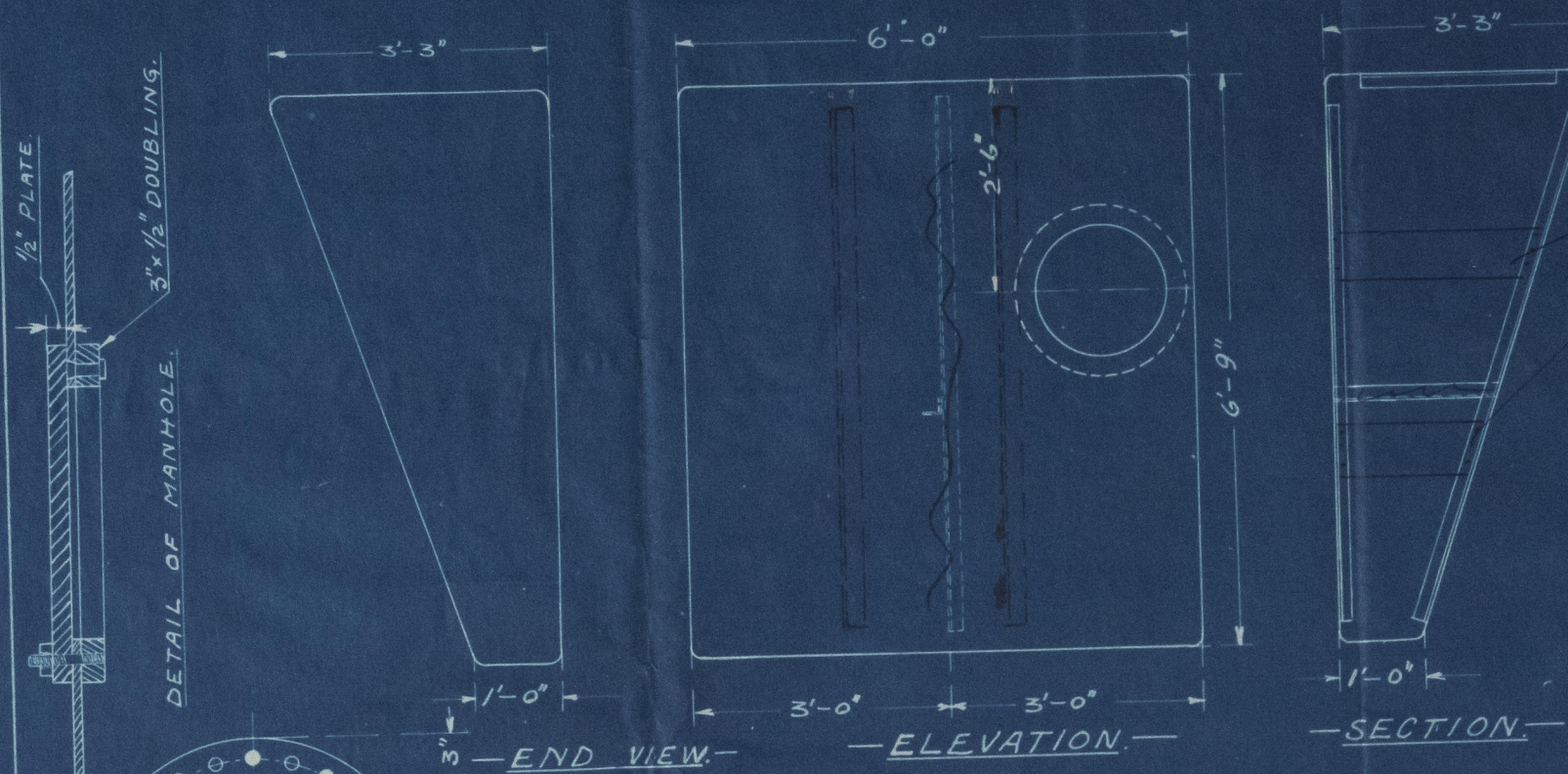


ELFLEDA.

OIL TANKS IN ENGINE ROOM.
FRAMNÆS MEK. VERKSTED. PR. SANDEFJORD.

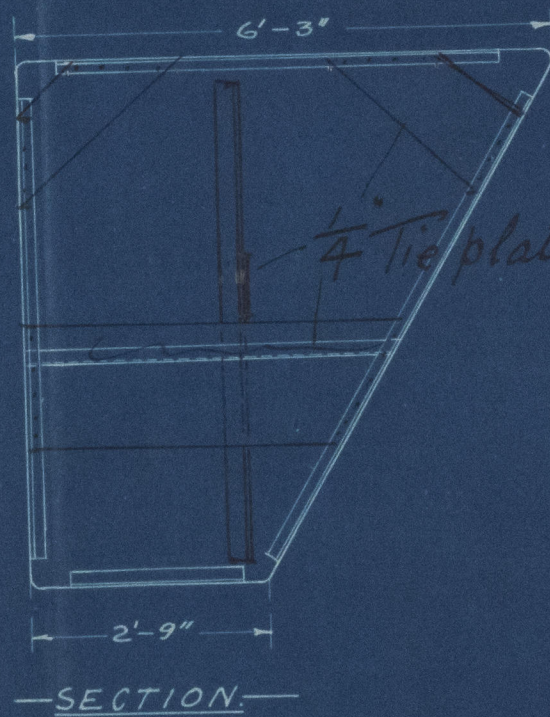
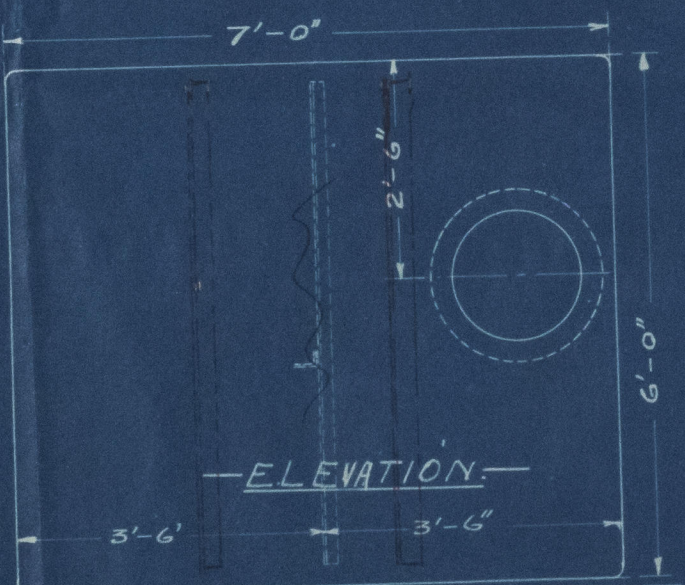
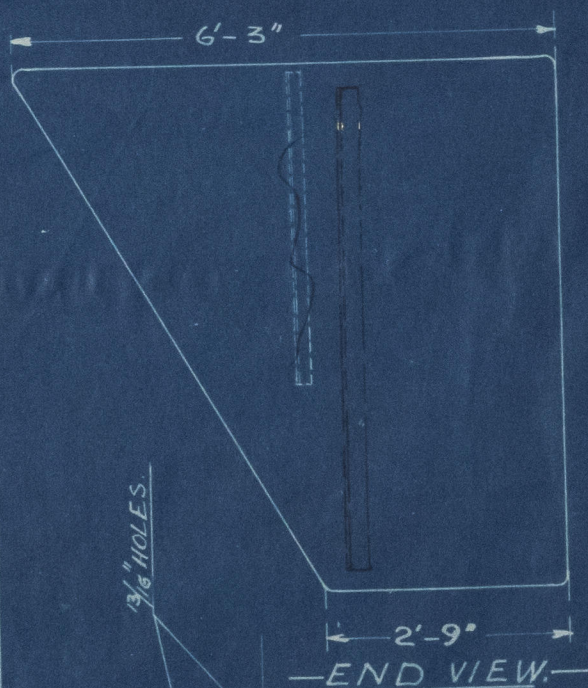
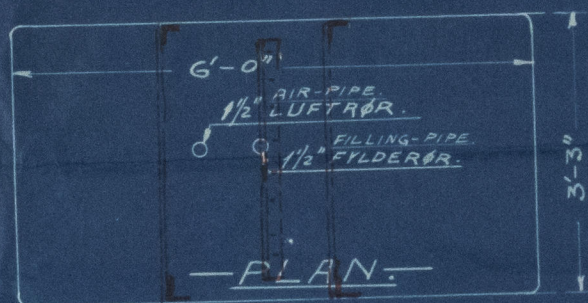
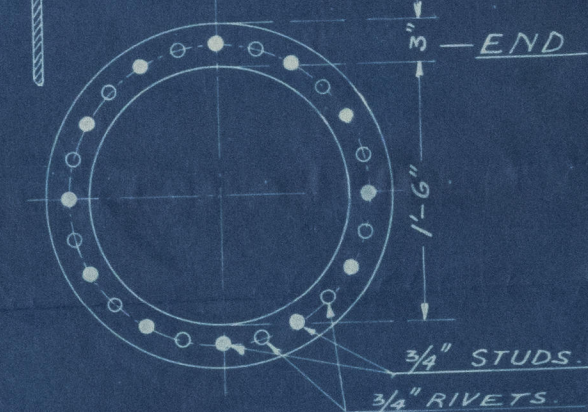
10-2-15



19/2/15
6" x 1/4" Tie bars 1/2" rivets

TANKS TO BE BUILT OF 1/4" PLATE;
BREADTH OF SEAMS AND BUTTS: 3 3/4";
DOUBLE CHAIN RIVETING, 5/8" DIA. OF RIVETS,
2" PITCH; END PLATES FLANGED AND
DOUBLE RIVETED TO SIDES.
ANGLE STAYS: 2" x 2" x 1/4".
TANKS TO BE TESTED WITH 12' HEAD OF WATER.

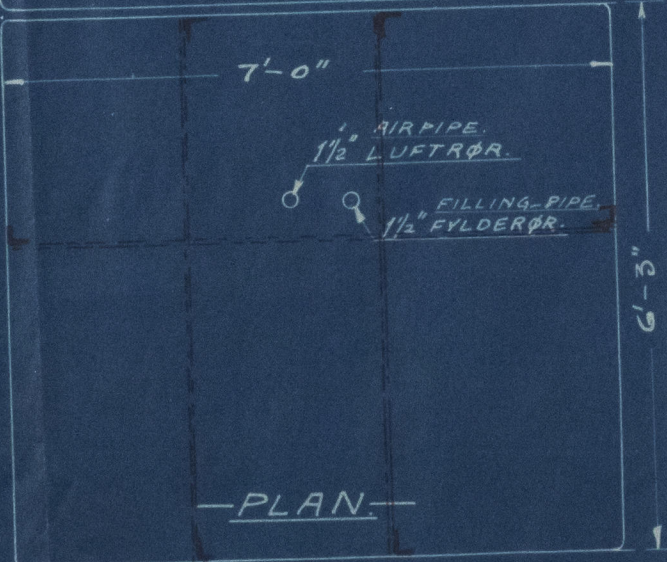
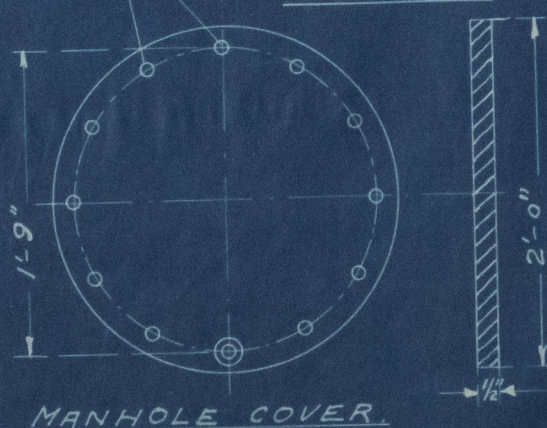
Seams to be caulked



1/4" Tie plates 1/2" rivets

19.2.15

19.2.15



Lloyd's Register
Foundation

Elfleda
Tanks

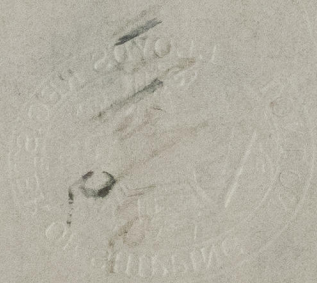
0006

W358139 - 0006

ELFLEDA

Xia 1477

Guard Book Box 5



© 2021

Lloyd's Register
Foundation