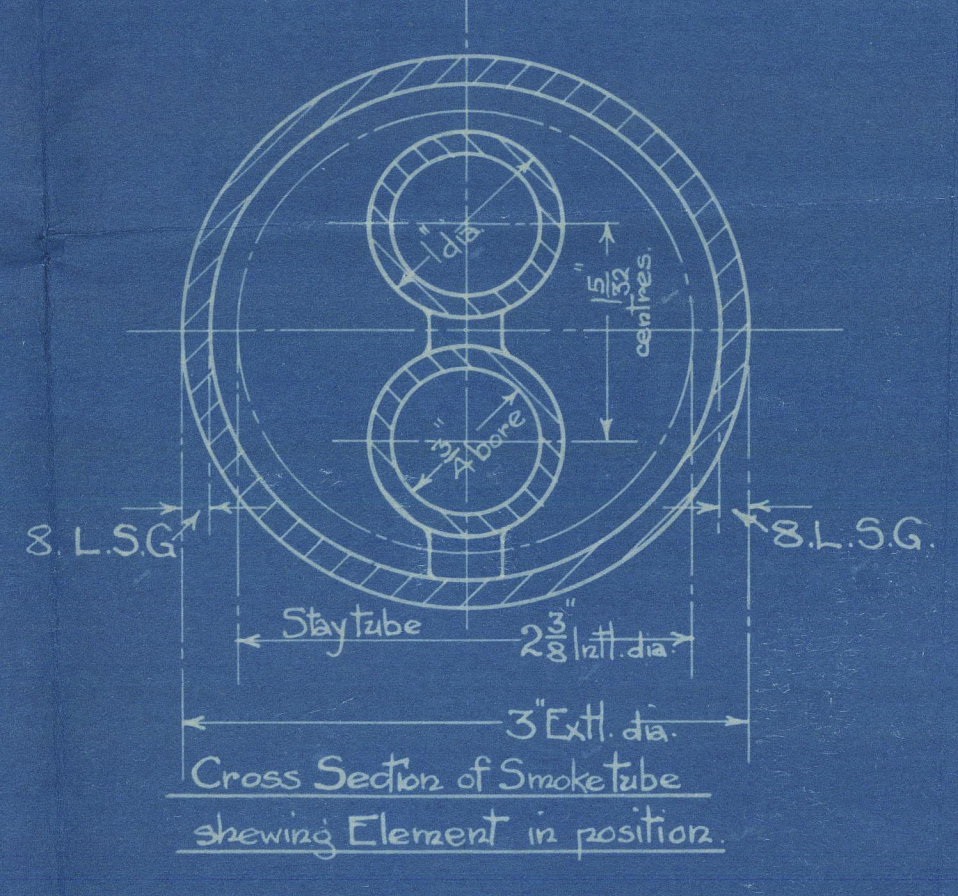
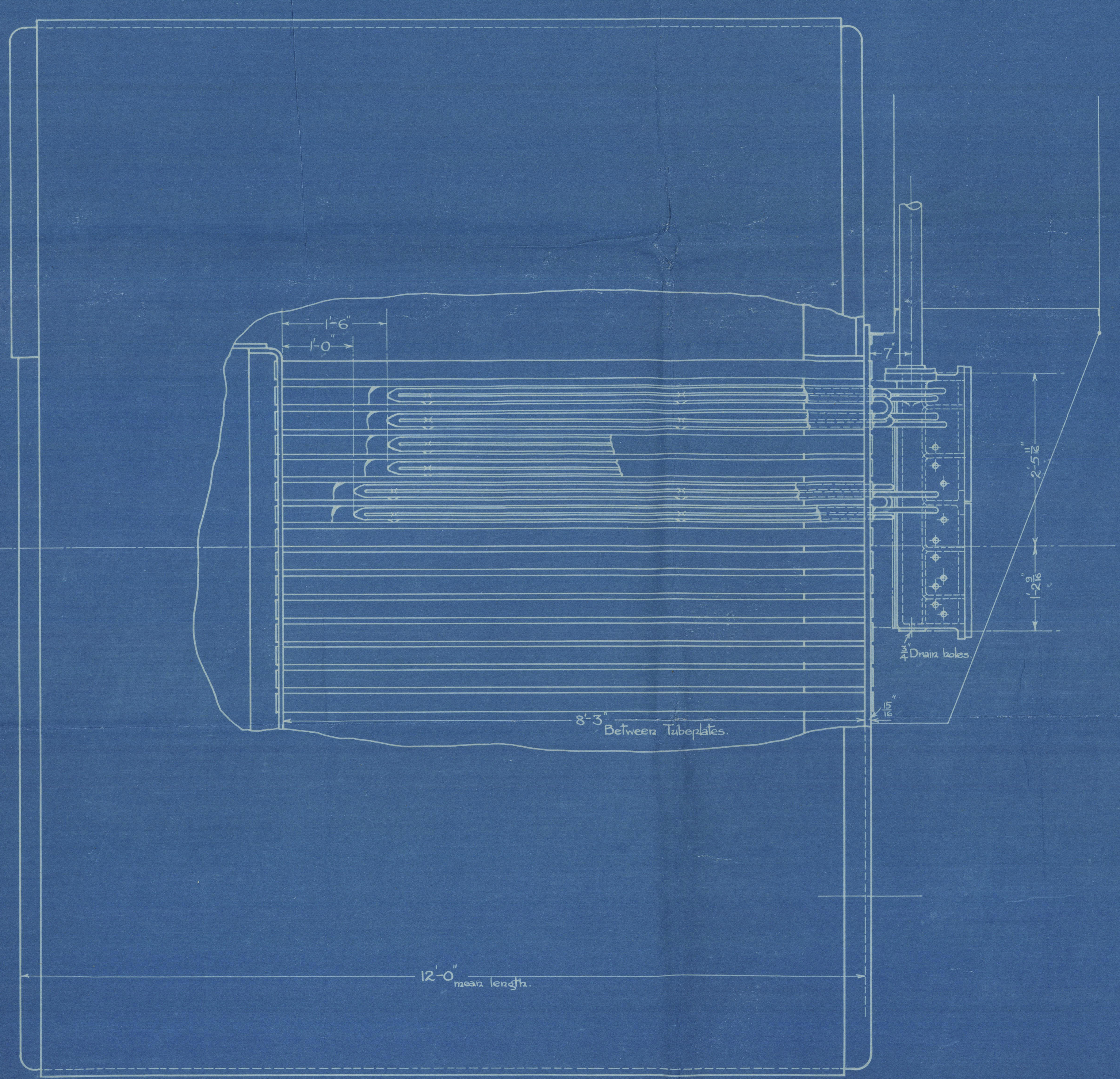
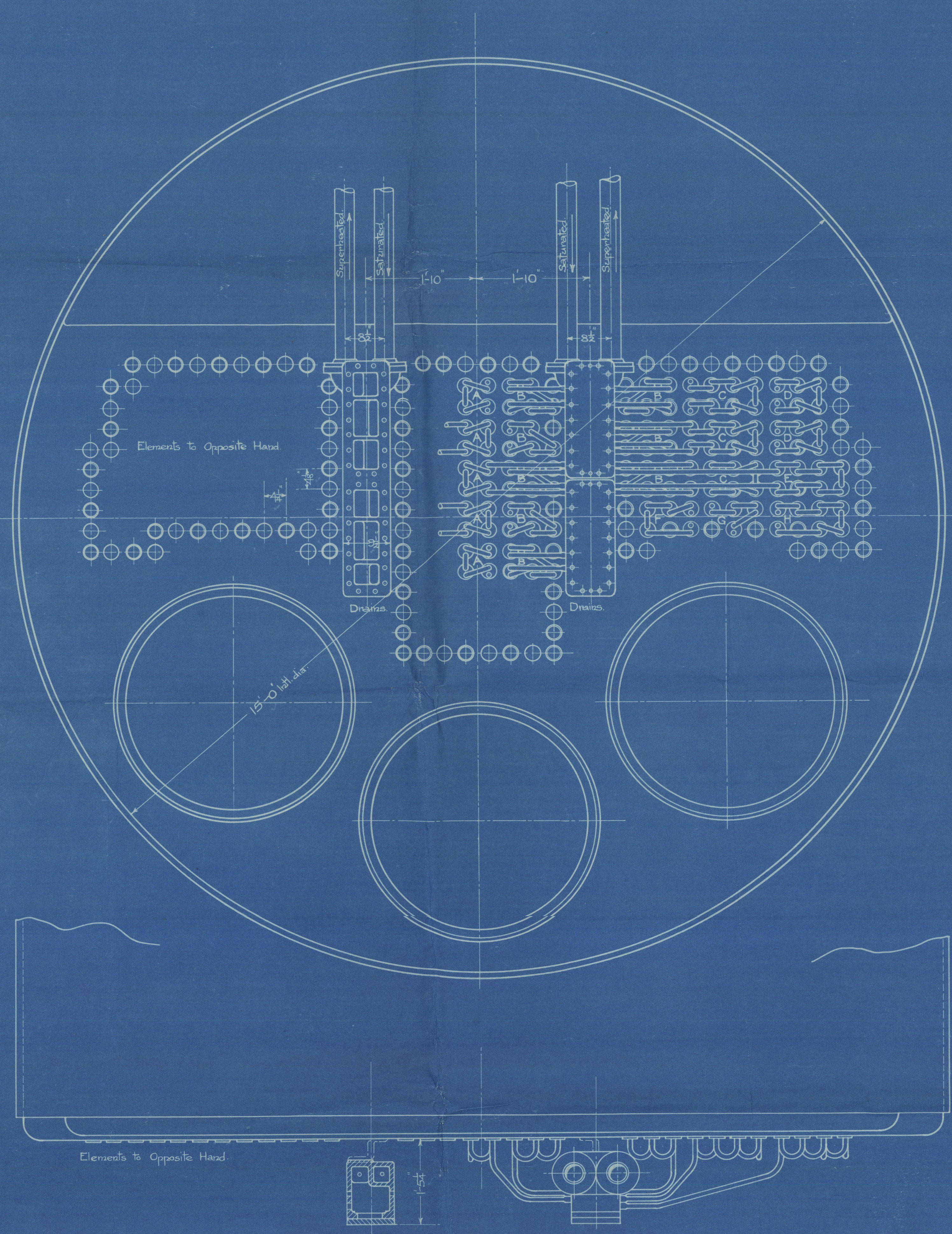


11 8 21



TOTAL EVAPORATIVE HEATING SURFACE OF ONE BOILER	= 2621 sq. ft.
HEATING SURFACE OF SUPERHEATER ELEMENTS EXTERNAL	= 816 sq. ft.
INTERNAL	= 610 sq. ft.
CROSS AREA	= 1723 sq. ft.
WORKING PRESSURE	200 LBS PER SQ. INCH.
TEST PRESSURE	600(HEADERS), 1200(ELEMENTS) LBS. PER SQ. INCH.
REQUISITE SURVEY	LLOYD'S.
BOILERS PER SHIP	3. - 2 SHIPS.

SCALE 1 INCH = 1 FOOT.

# ARRANGEMENT OF "ROBINSON" MARINE SUPERHEATER

*Robinson*  
20/6/21

THE SUPERHEATER CORPS LTD  
14 NEW BURLINGTON STREET LONDON W1  
MARINE DEPT  
DRAWING NO M483/6  
DATE 16-6-1921

W351-0051



*Superheated*

*1<sup>st</sup> British Premier*

*Mw. 76277*

*RETAIN*

W351 - 0057



© 2021

Lloyd's Register  
Foundation



RETAIN



© 2021

Lloyd's Register  
Foundation