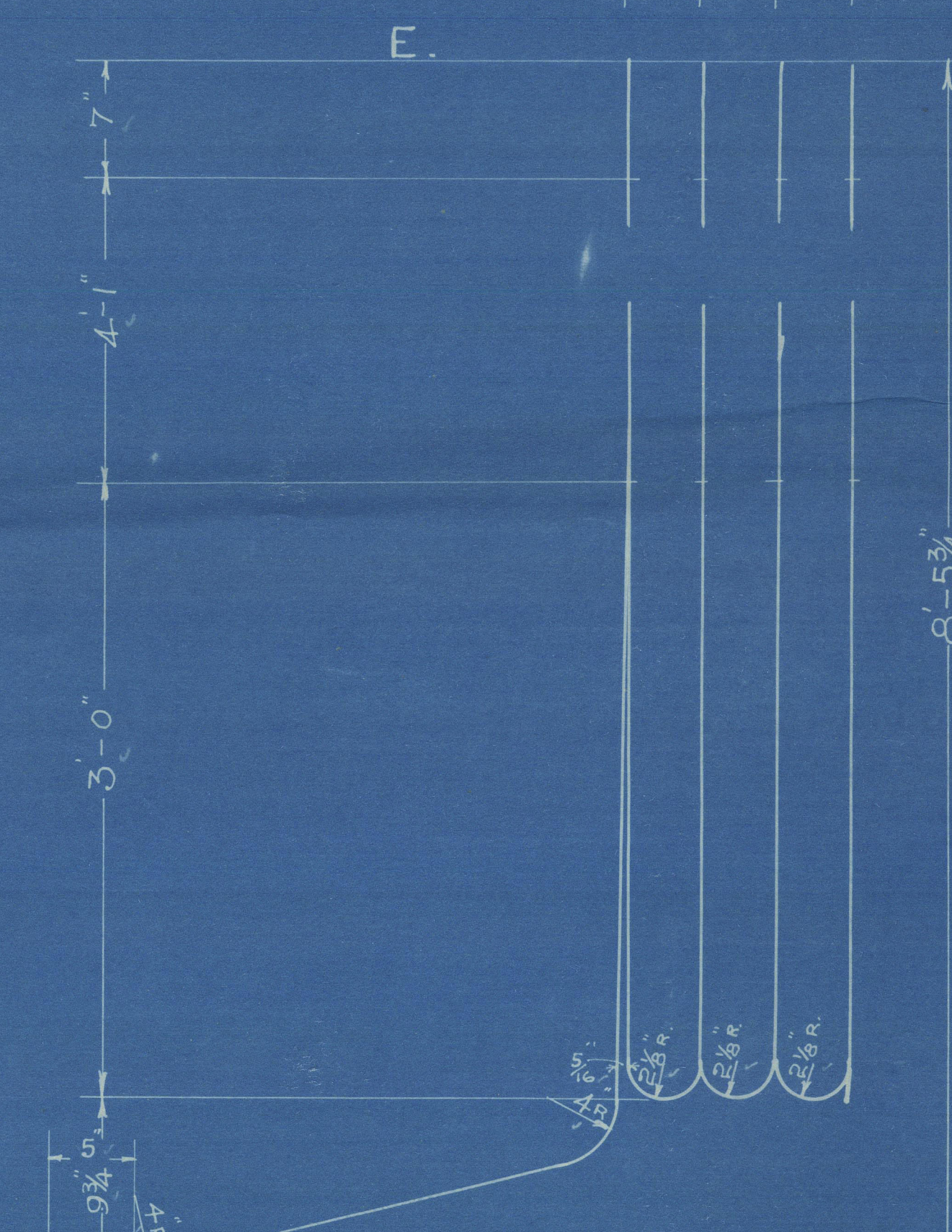
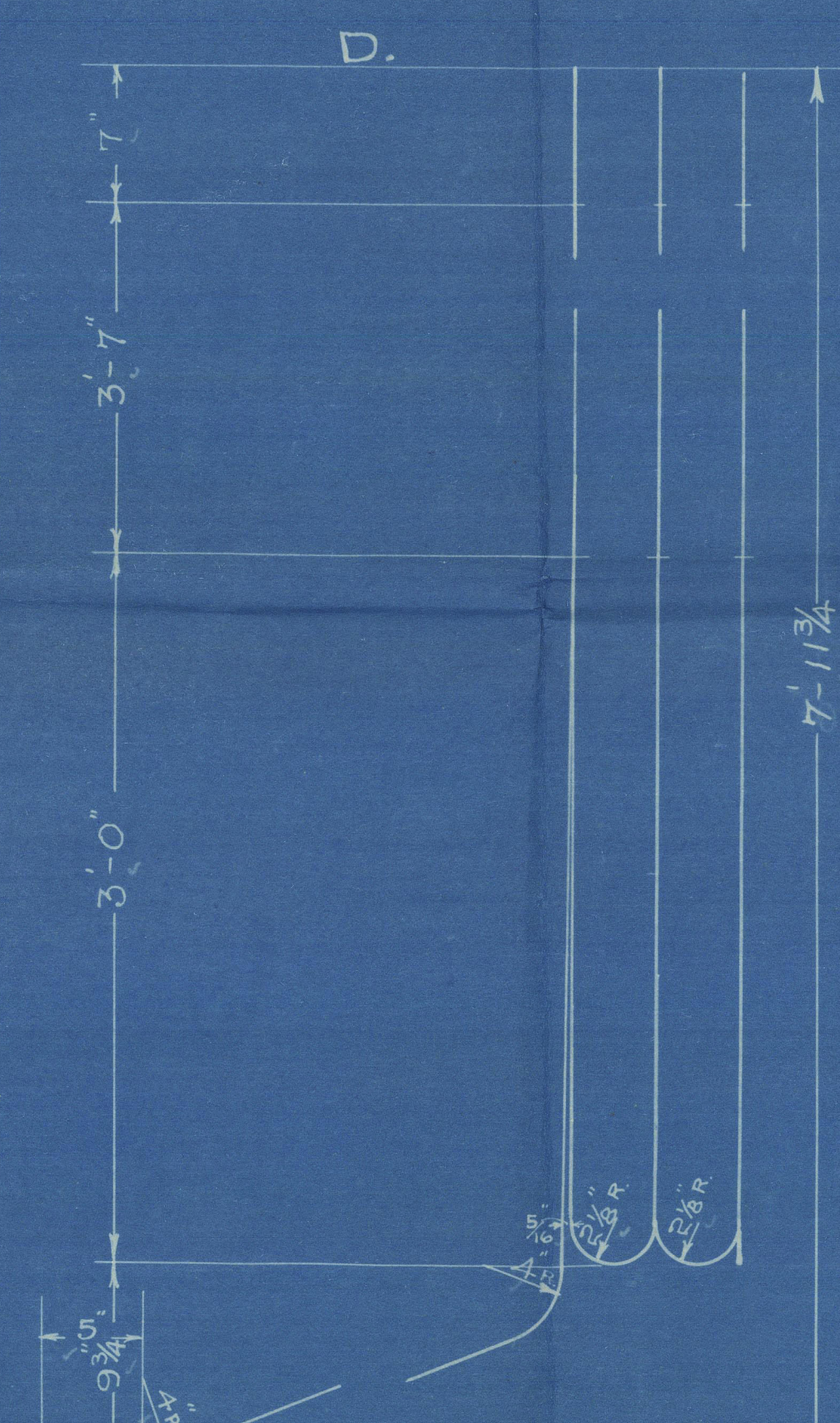
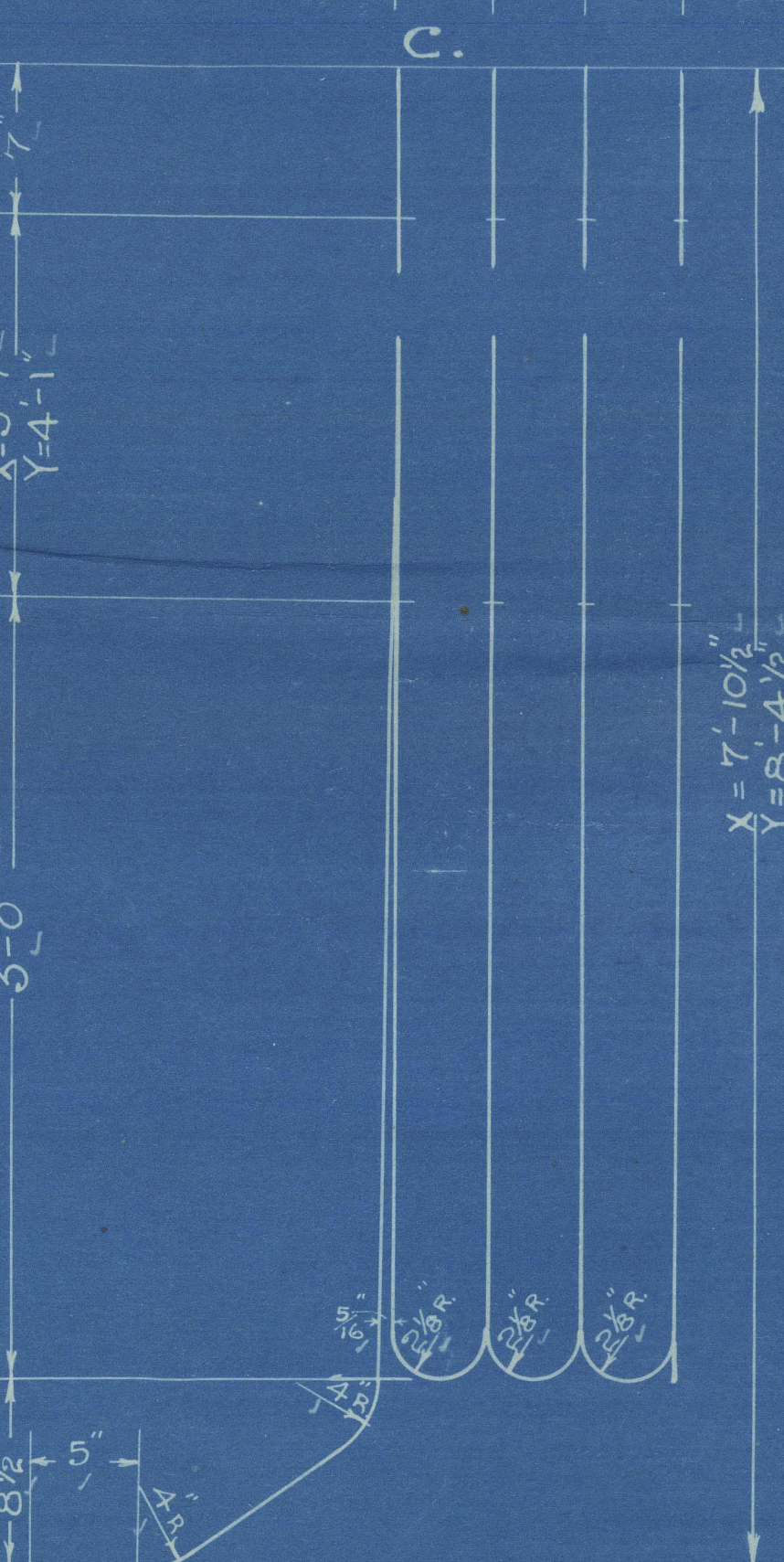
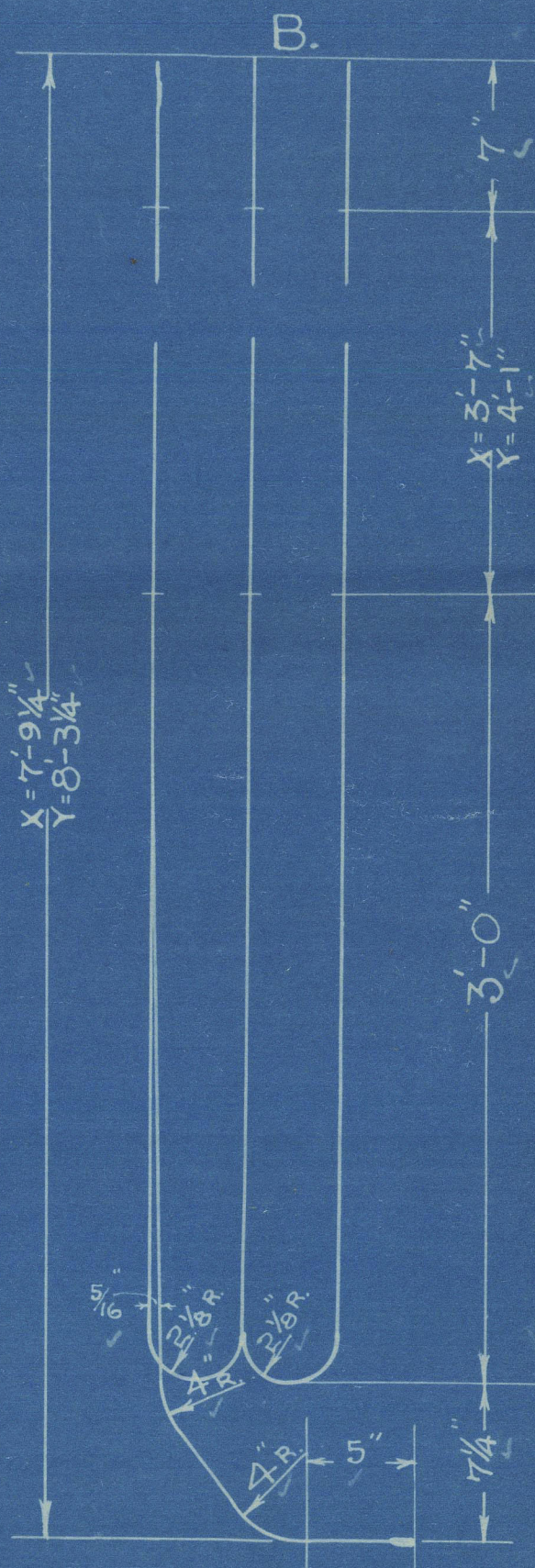
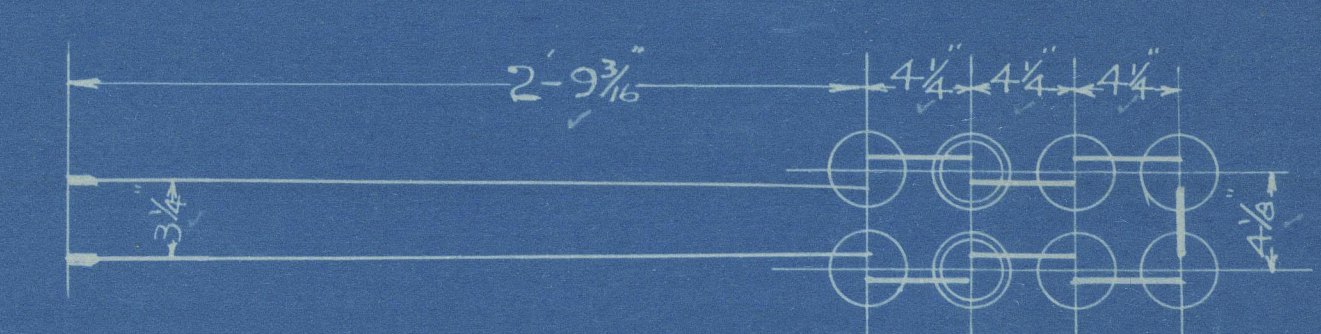
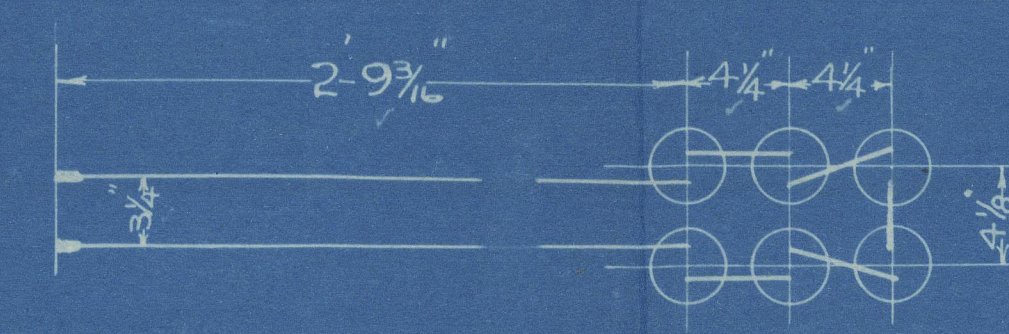
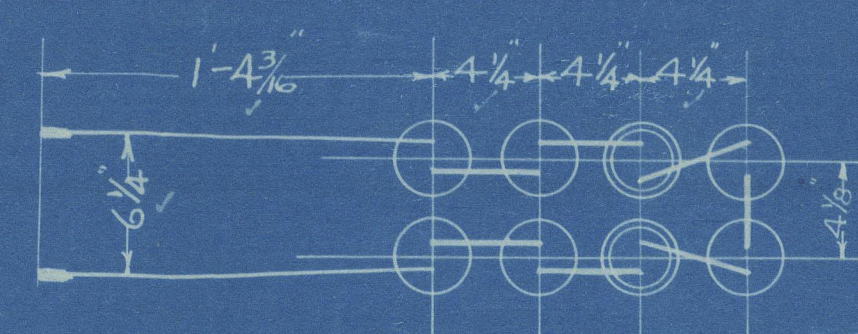
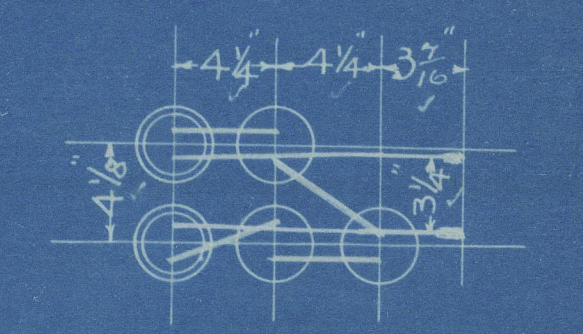
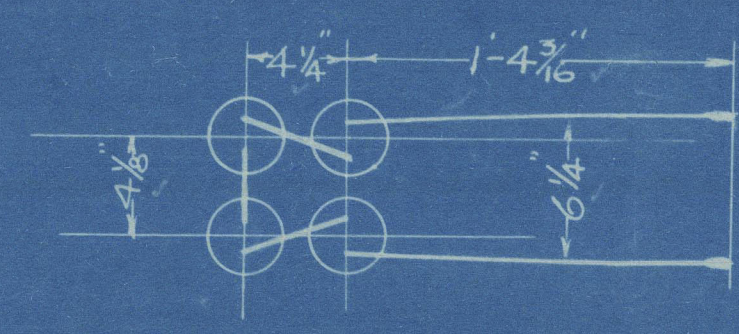


10 8.21



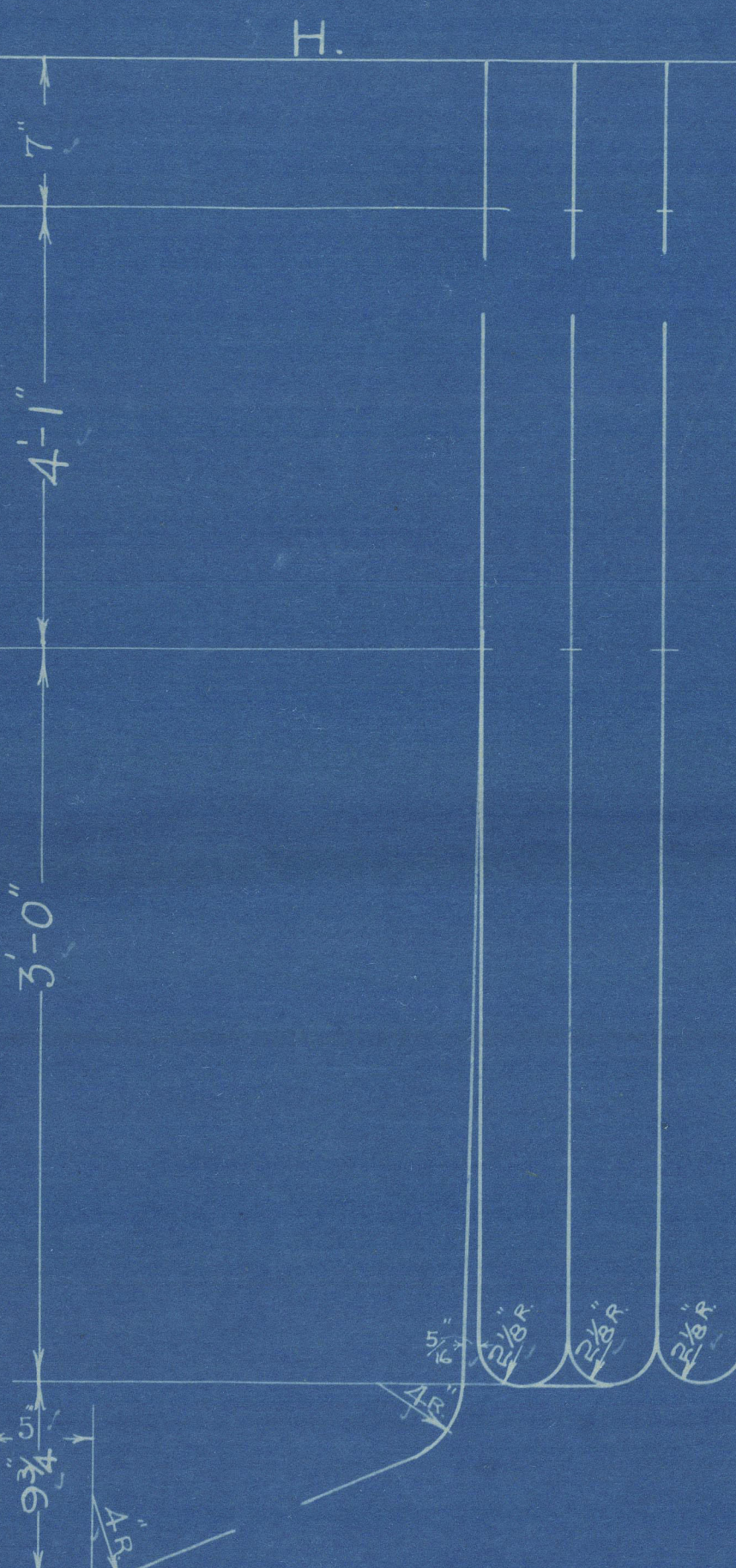
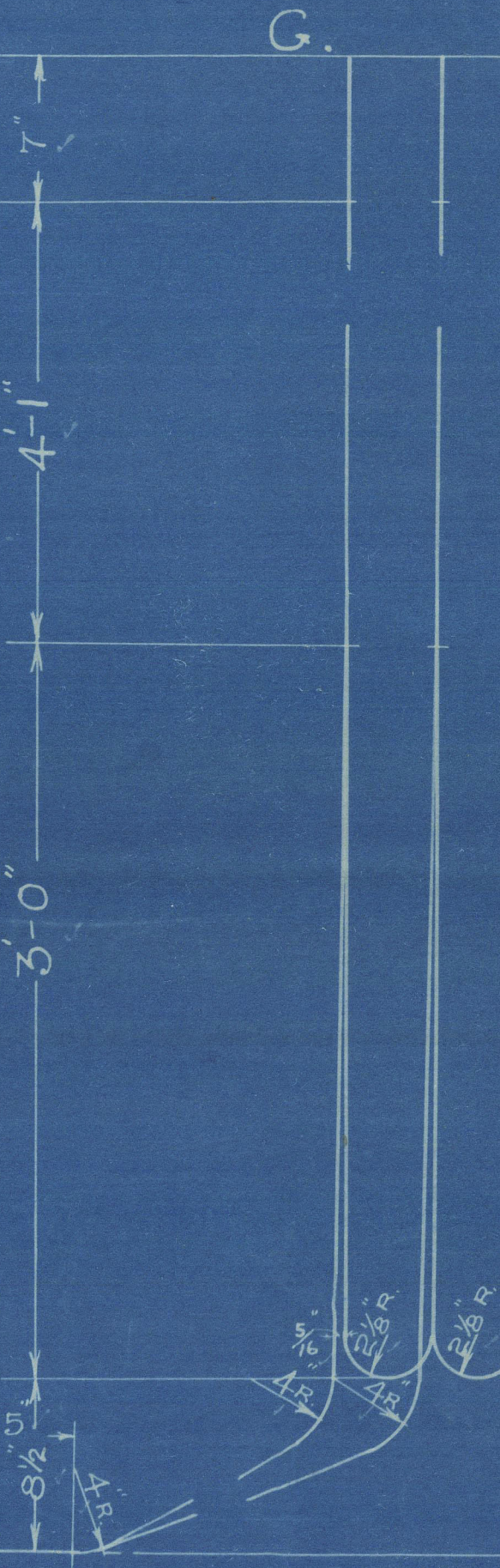
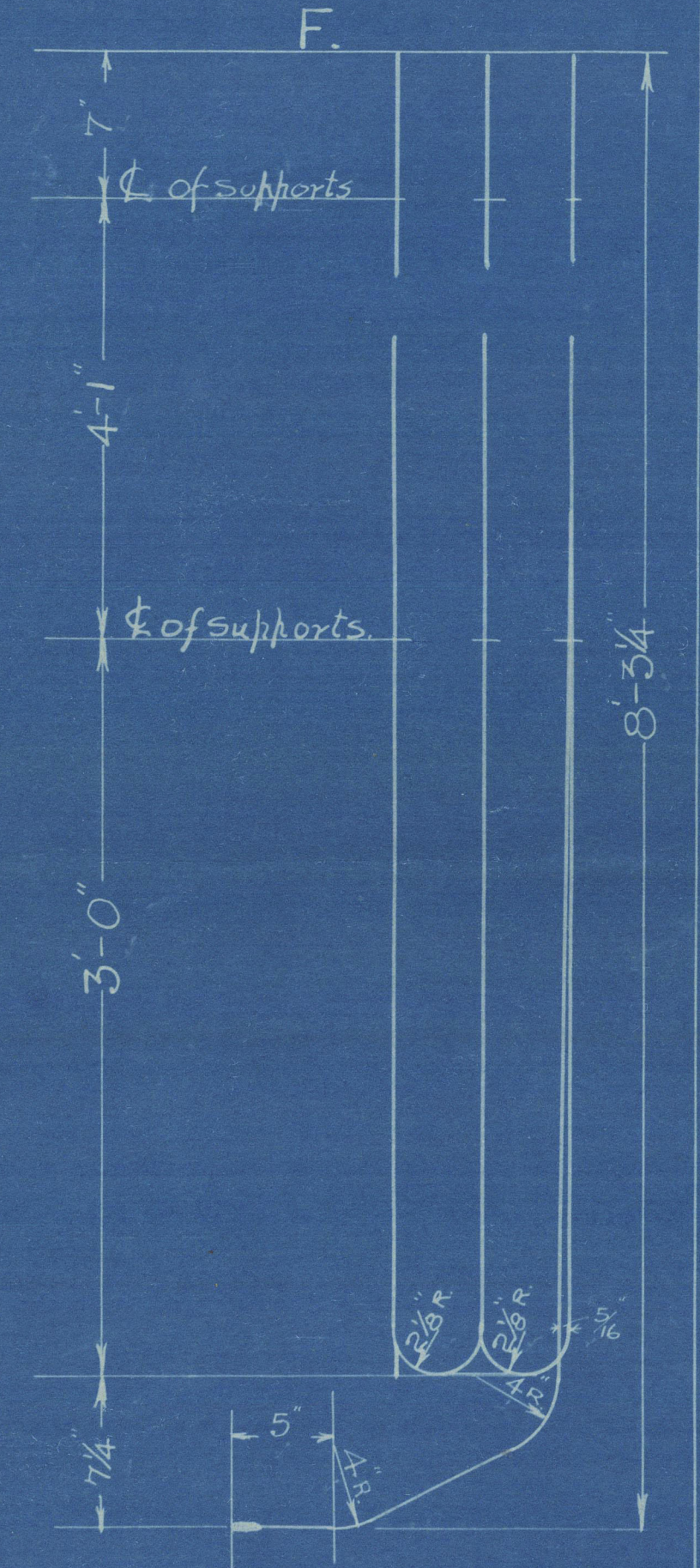
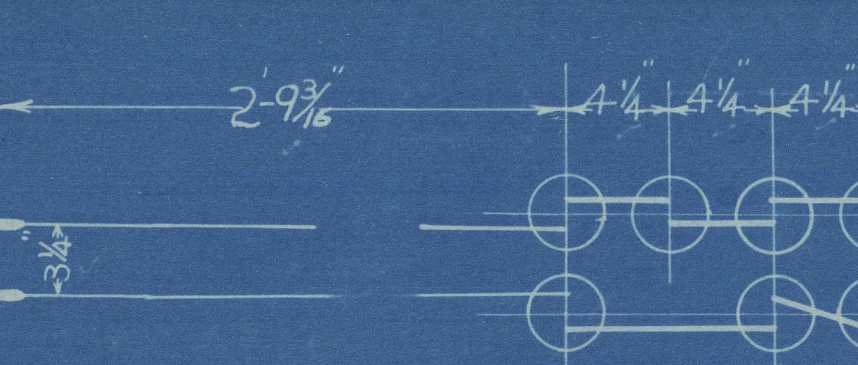
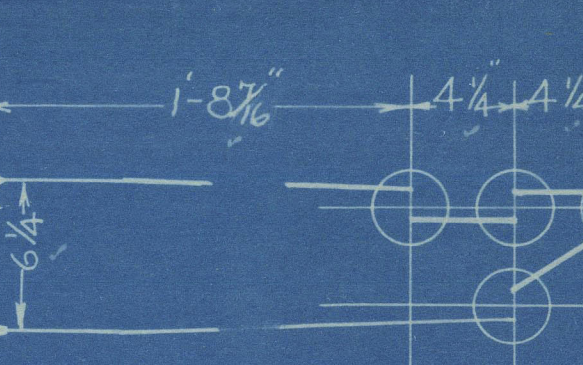
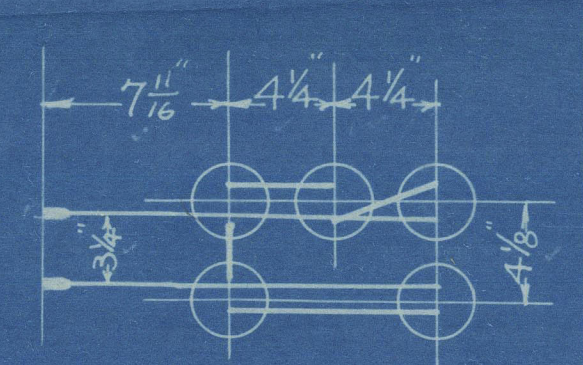
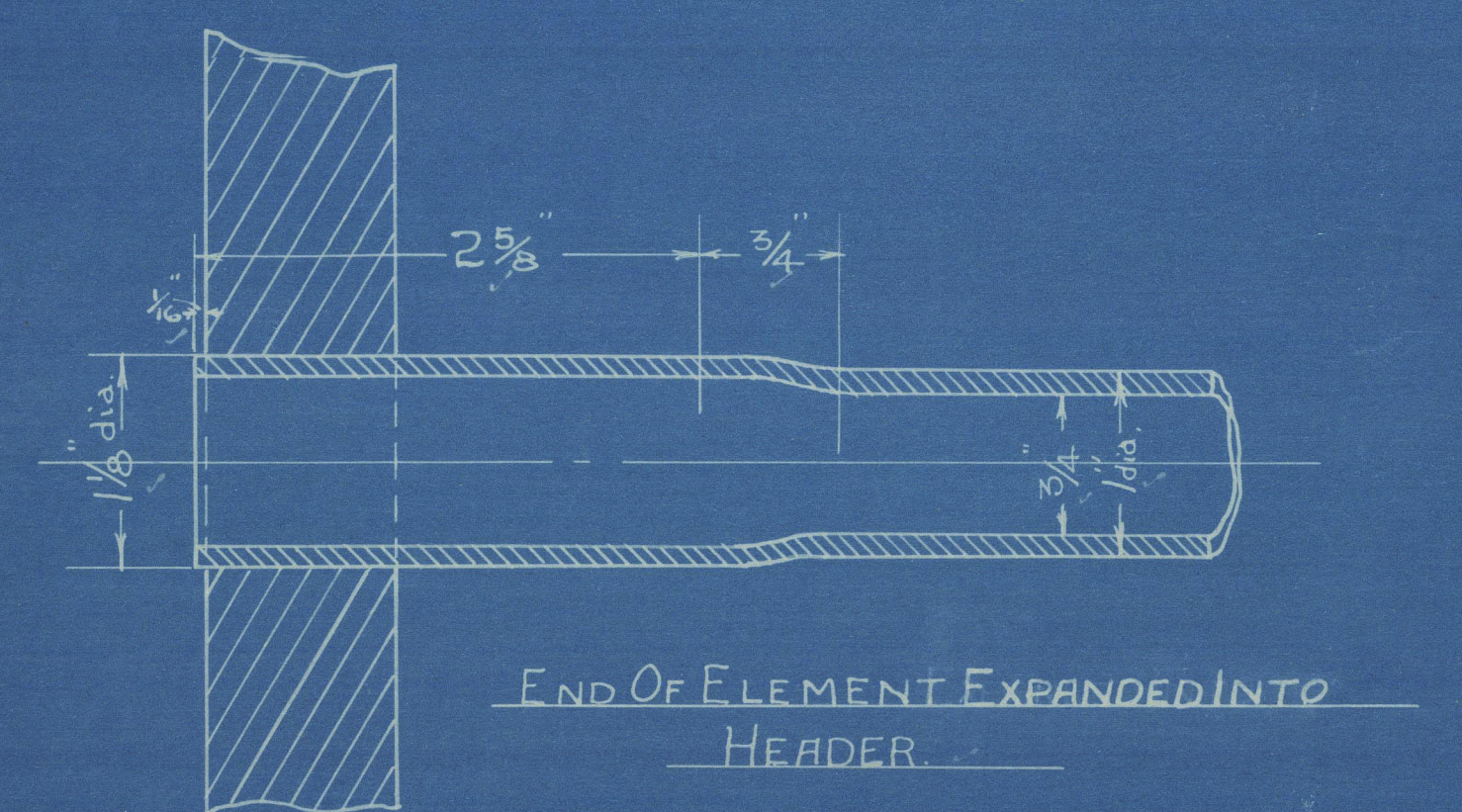
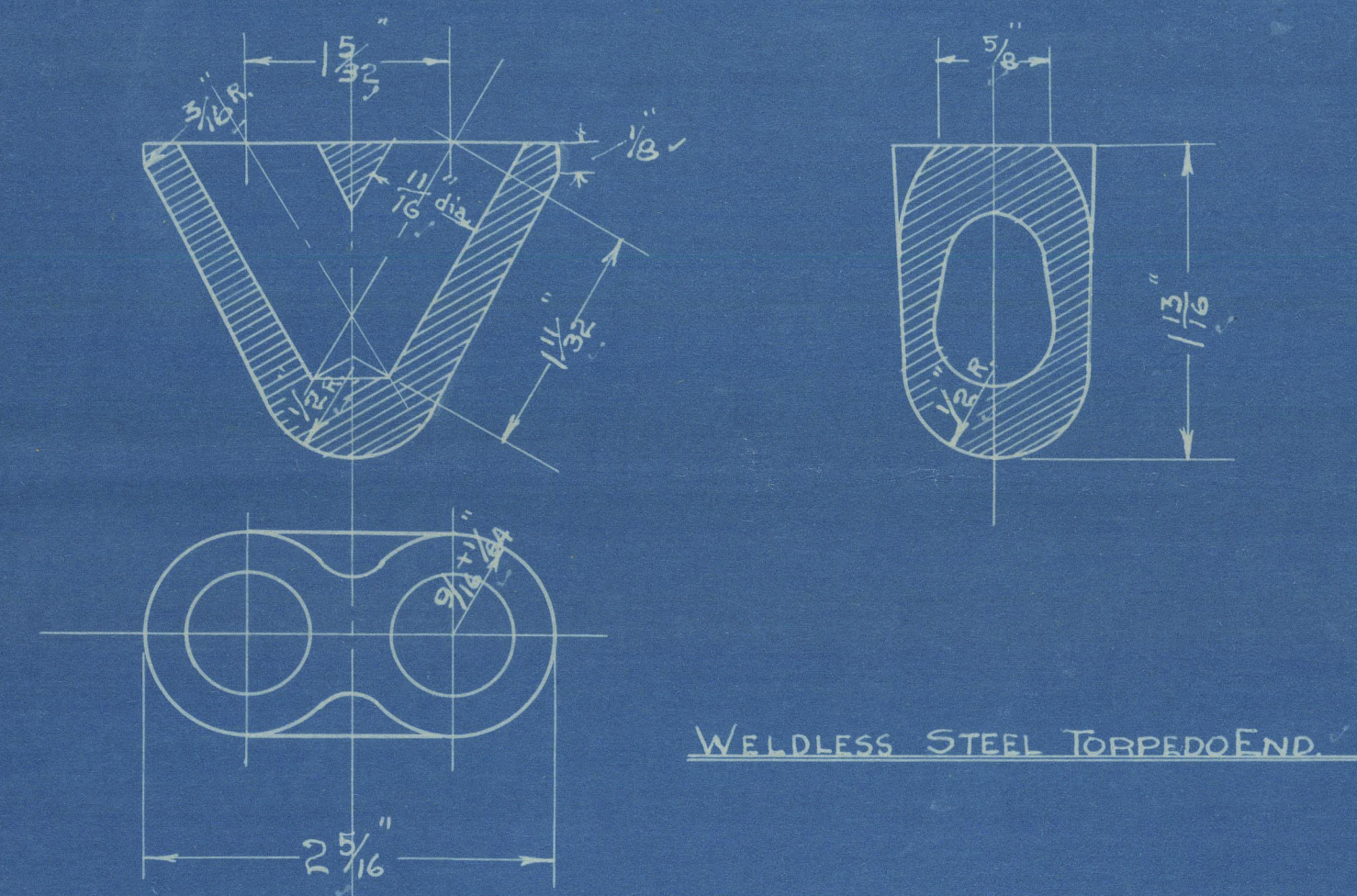
1 OFF THUS X  
1 " OPP HAND (Supports Only) X  
2 OFF THUS Y  
1 " OPP HAND Y (Supports Only) Y

4 OFF THUS X  
4 " TO OPP HAND X  
4 OFF THUS Y  
4 " OPP HAND Y

2 OFF THUS X  
2 " OPP HAND (Supports Only) X  
1 OFF THUS Y  
1 " OPP HAND Y (Supports Only) Y

2 OFF THUS  
2 " OPP HAND (Supports Only) Y

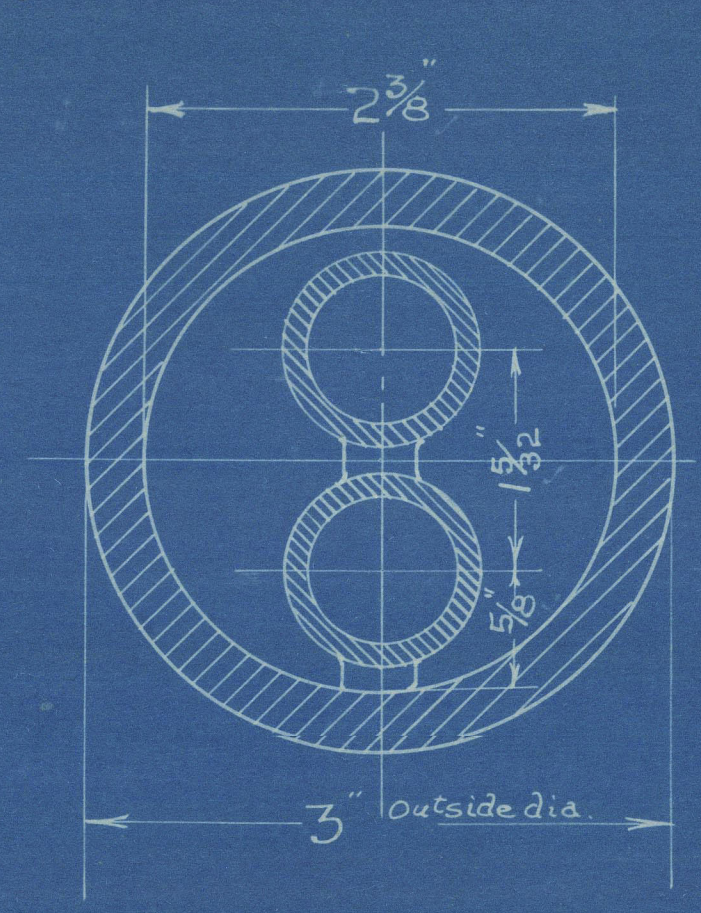
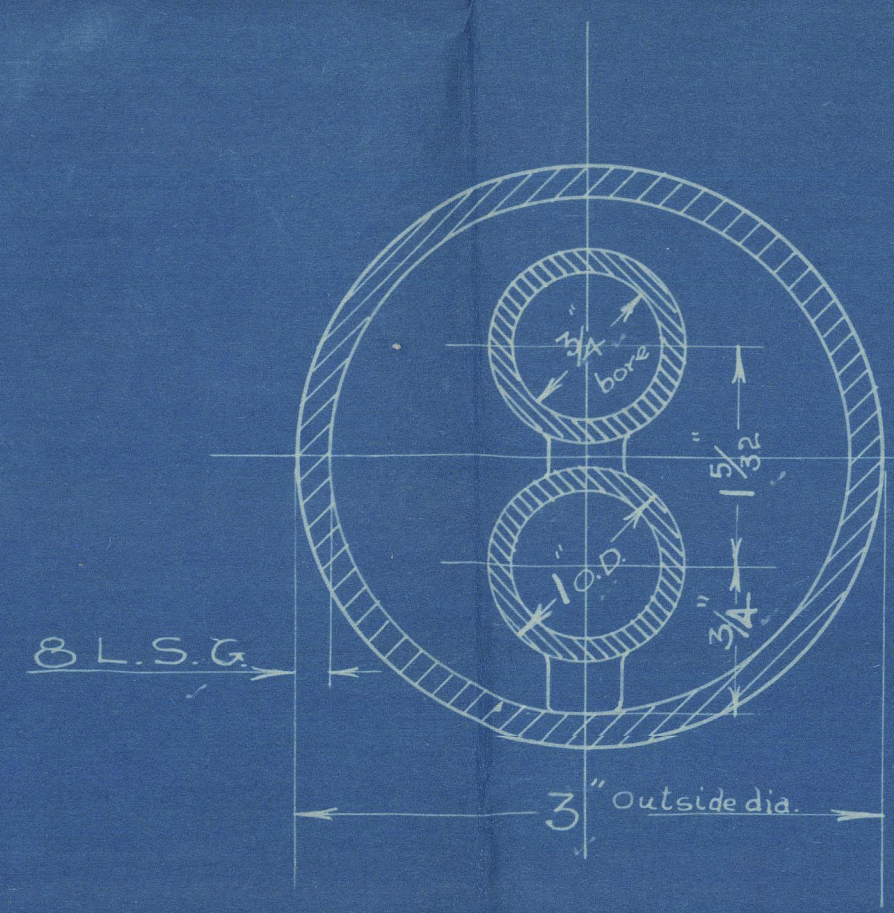
1 OFF THUS  
1 " OPP HAND (Supports Only) Y



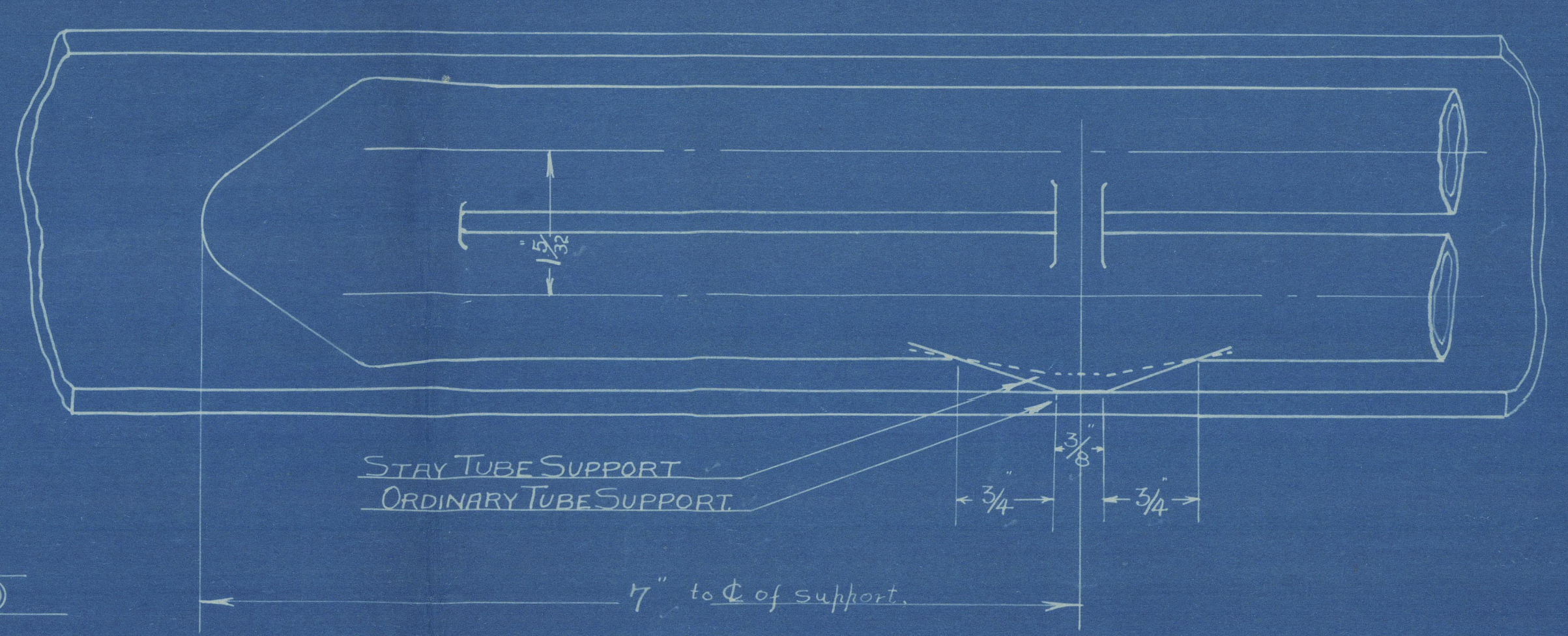
1 OFF THUS  
1 " OPP HAND

1 OFF THUS  
1 " OPP HAND

1 OFF THUS  
1 " OPP HAND



ELEMENTS IN ORDINARY SMOKE TUBE  
ELEMENTS IN STAY TUBE  
all stay tubes indicated thus: ©



ALL TUBES TO BE OF SOLID DRAWN STEEL 1" O.D. 3/4" BORE  
WORKING PRESSURE 200 LBS PER SQ. INCH  
TEST 1200  
REQUISITE SURVEY LLOYD'S

Nº OF ELEMENTS PER SET = 39  
" " " 3 SETS = 117  
all elements to be stamped with respective letters  
to facilitate fitting up

# MARINE SUPERHEATER ELEMENTS

SCALE 1 1/2" = 1 FOOT.

*J.R. 28/6/21*  
*24 11/8/21*

THE SUPERHEATER CORPS LTD  
14 NEW BURLINGTON STREET LONDON W1  
MARINE DEPT  
DRAWING N° 483/4  
DATE 9/6/21



Superheater

$\frac{S}{S}$  British Feds Premier

Muc 76277

RETAIN

W357 - 0050



© 2021

Clouds Register



RETAIN



© 2021

Lloyd's Research  
Foundation