

HEATING SURFACE SQ. FEET.

TUBES 2050.

FURNACES 167

COMBUSTION CHAMBERS 215

TUBE PLATES 78

TOTAL 1. BOILER 2510  $\pi$

TOTAL 2. BOILERS 5020  $\pi$

WORKING PRESSURE 180 LBS PER  $\pi$

TEST " 360 " "  $\pi$

CHECKED BY *jae*  
DATE 23-8-09  
TIME CHARGED TO  
NO

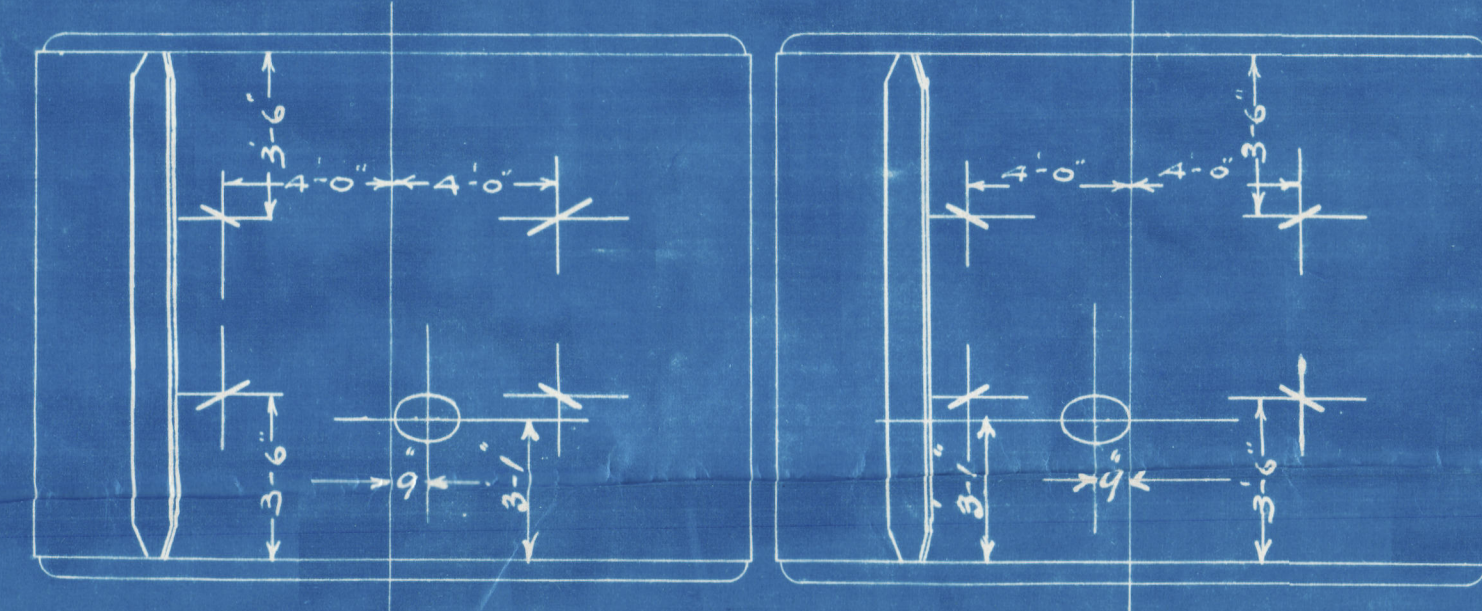
BOILER, CONTRACT. N<sup>o</sup> 673.695.696

MESS<sup>rs</sup> W<sup>m</sup> DOBSON & CO. S.S. N<sup>o</sup> 155.174.175

TO BE CONSTRUCTED TO PASS LLOYDS REQUIREMENTS.

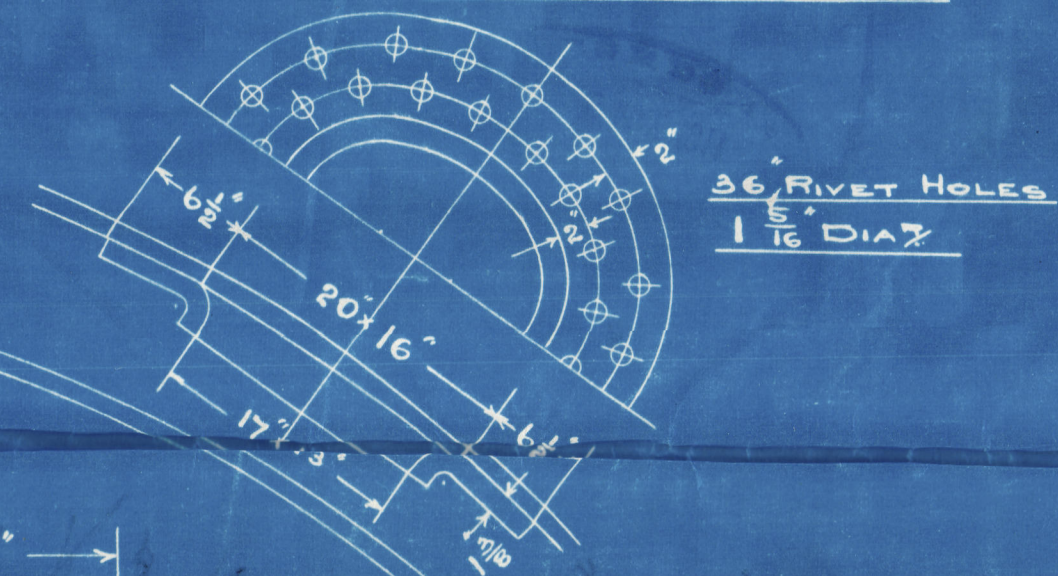
2 OFF THIS.

SCALE 1" = 1 FOOT.

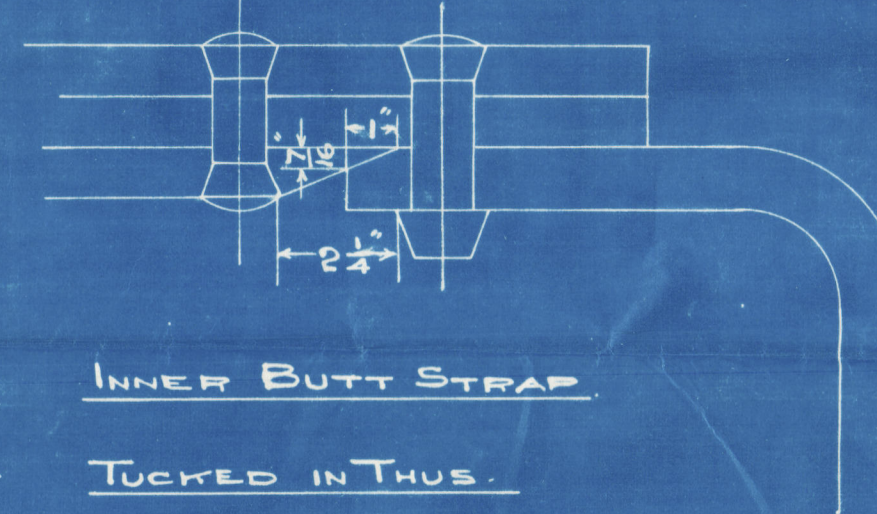


FRONT OF BOILERS.

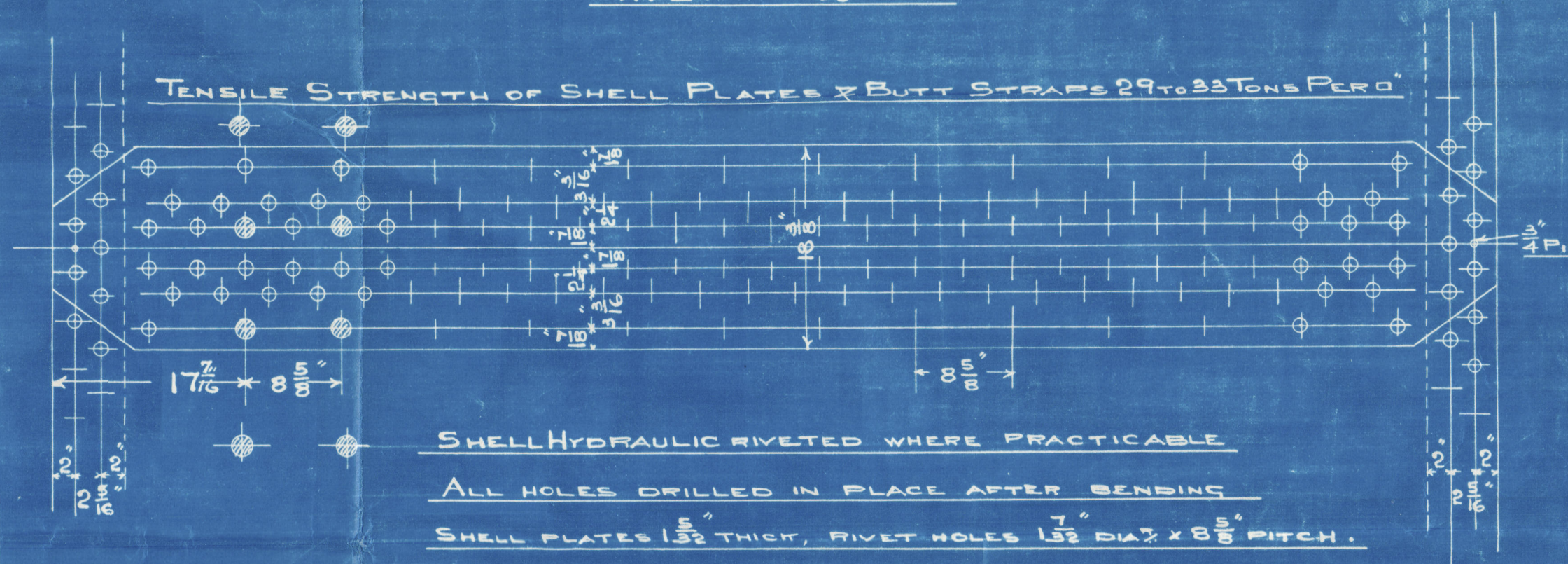
17x13 MANHOLE FITTED WITH  
MAG NEILS DOOR & DOUBLING



MATERIAL  
PLATES STEEL  
RIVETS "  
LONG STAYS "  
SCREW STAYS WROT IRON  
TUBES WROT IRON



INNER BUTT STRAP  
TUCKED IN THIS.



SHELL HYDRAULIC RIVETED WHERE PRACTICABLE

ALL HOLES DRILLED IN PLACE AFTER BENDING

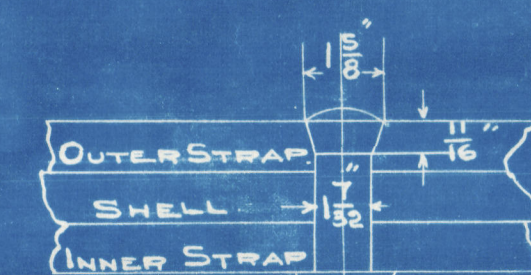
SHELL PLATES 1 1/2" THICK, RIVET HOLES 1 1/2" DIA x 8 1/2" PITCH.

CIRCUMFERENTIAL BEAMS DOUBLE RIVETED

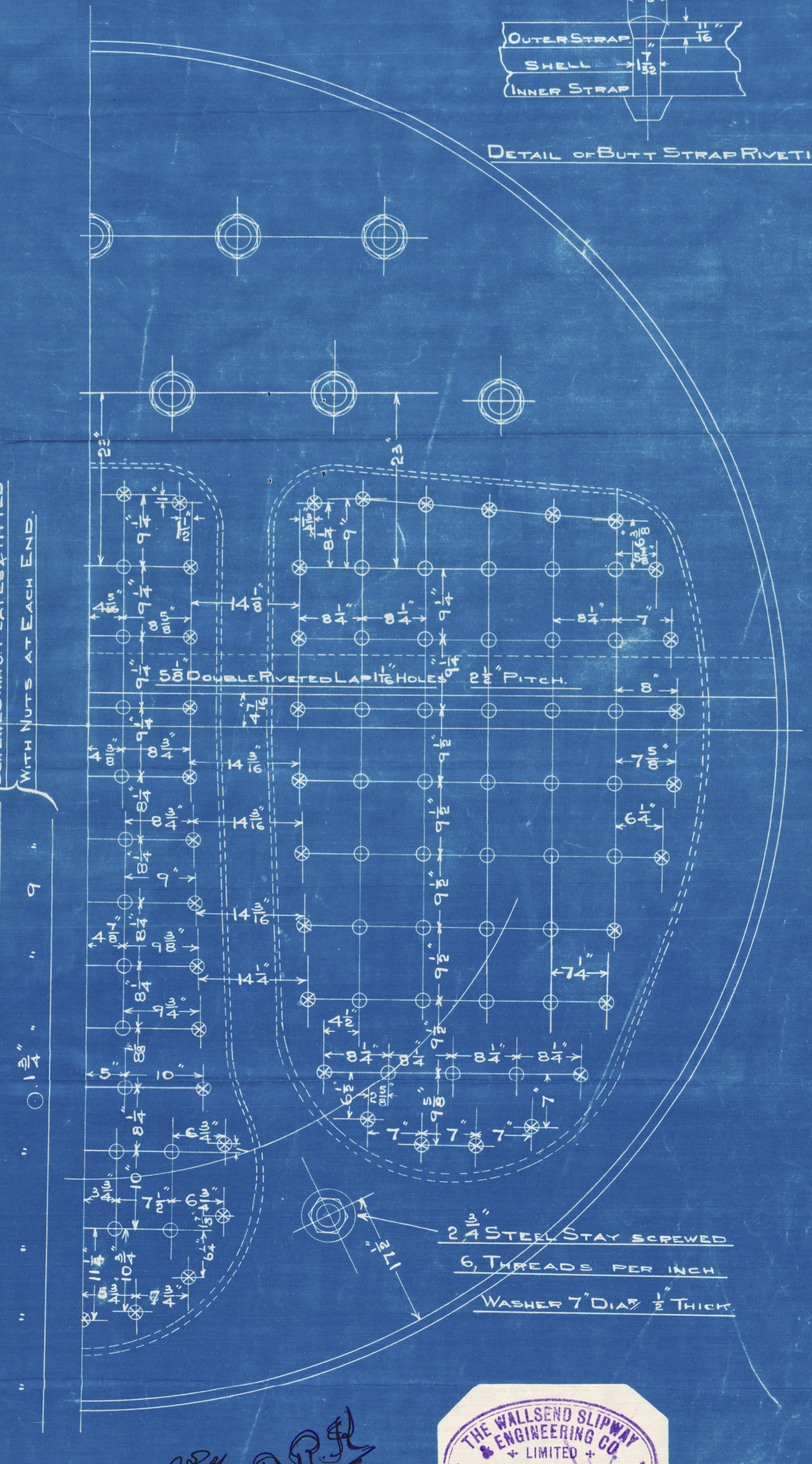
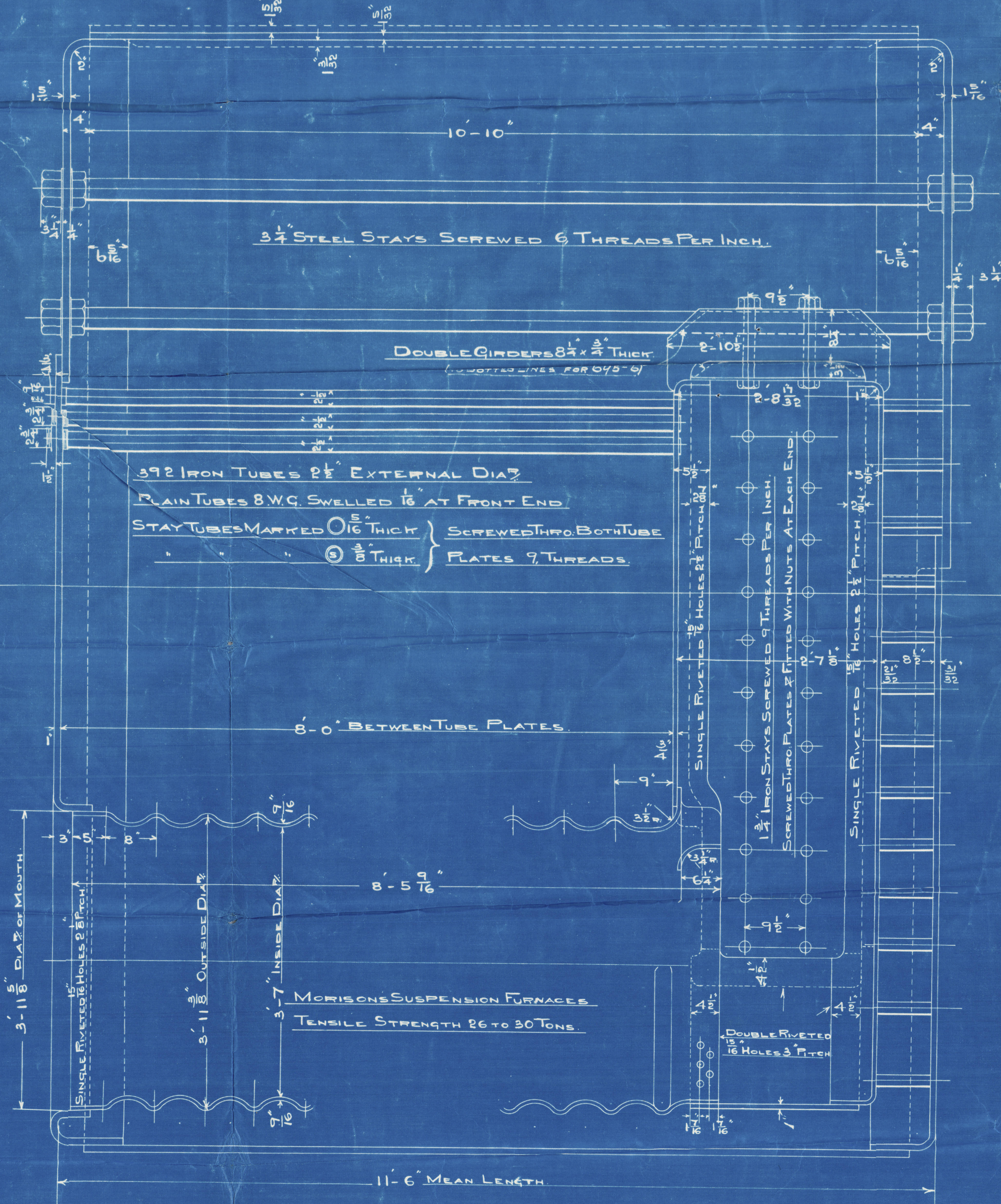
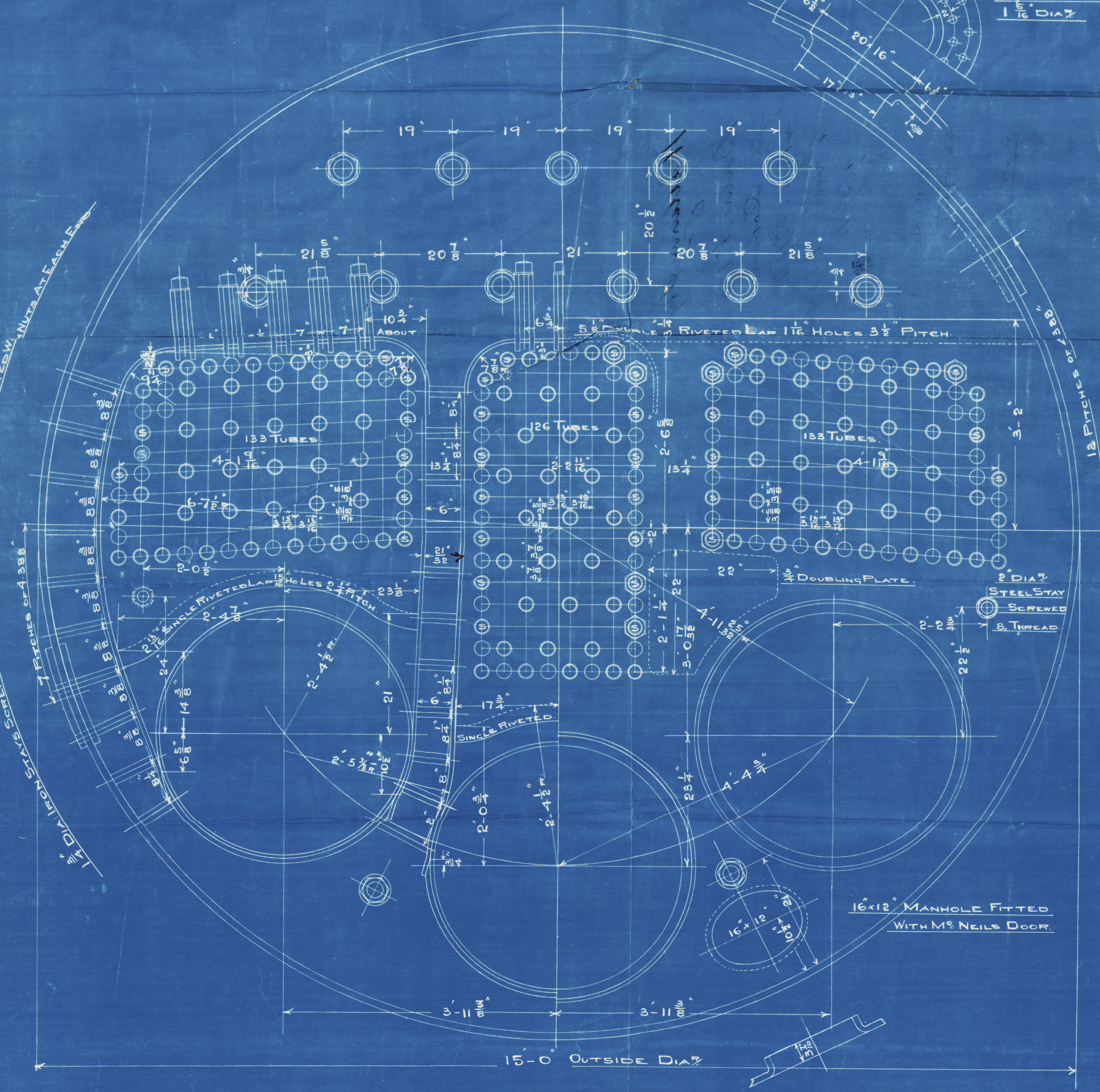
RIVET HOLES 1 1/2" DIA x 4 3/8" PITCH (128 PITCHES)

INSIDE BUTT STRAPS 1 1/2" THICK

OUTSIDE BUTT STRAPS 1 1/2" THICK



DETAIL OF BUTT STRAP RIVETING.





Wallend Ship  
Co

Boilers Nos 695-6  
for Dobsons  
Ships Nos 174-5  
Pressure 180 lbs

4/5/11

SS. OUSE



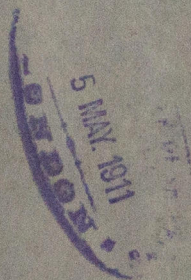
NEWCASTLE - ON - TYNE.

REPORT No. 61328.

S.S. 'ALT'

NEWCASTLE - ON - TYNE.

Report No 61533



© 2020

Lloyd's Register  
Foundation