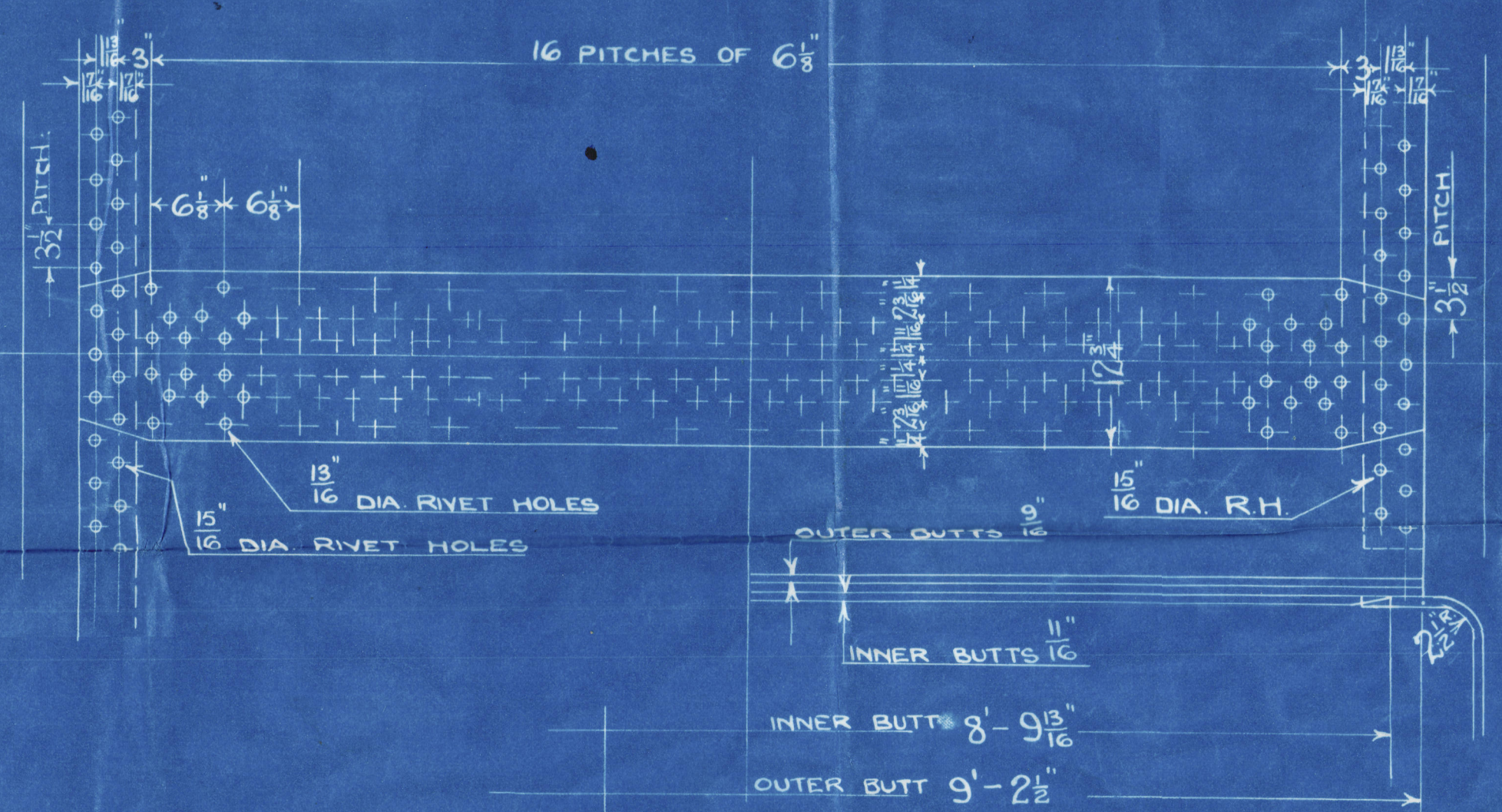


BOILERS NOS R314, R315, R316
 SCALE: 1" = 1 FOOT
 WORKING PRESS = 150 LBS/1" TEST PRESS = 275 LBS/1"
 ONE OFF PER NO TO LLOYDS SURVEY.

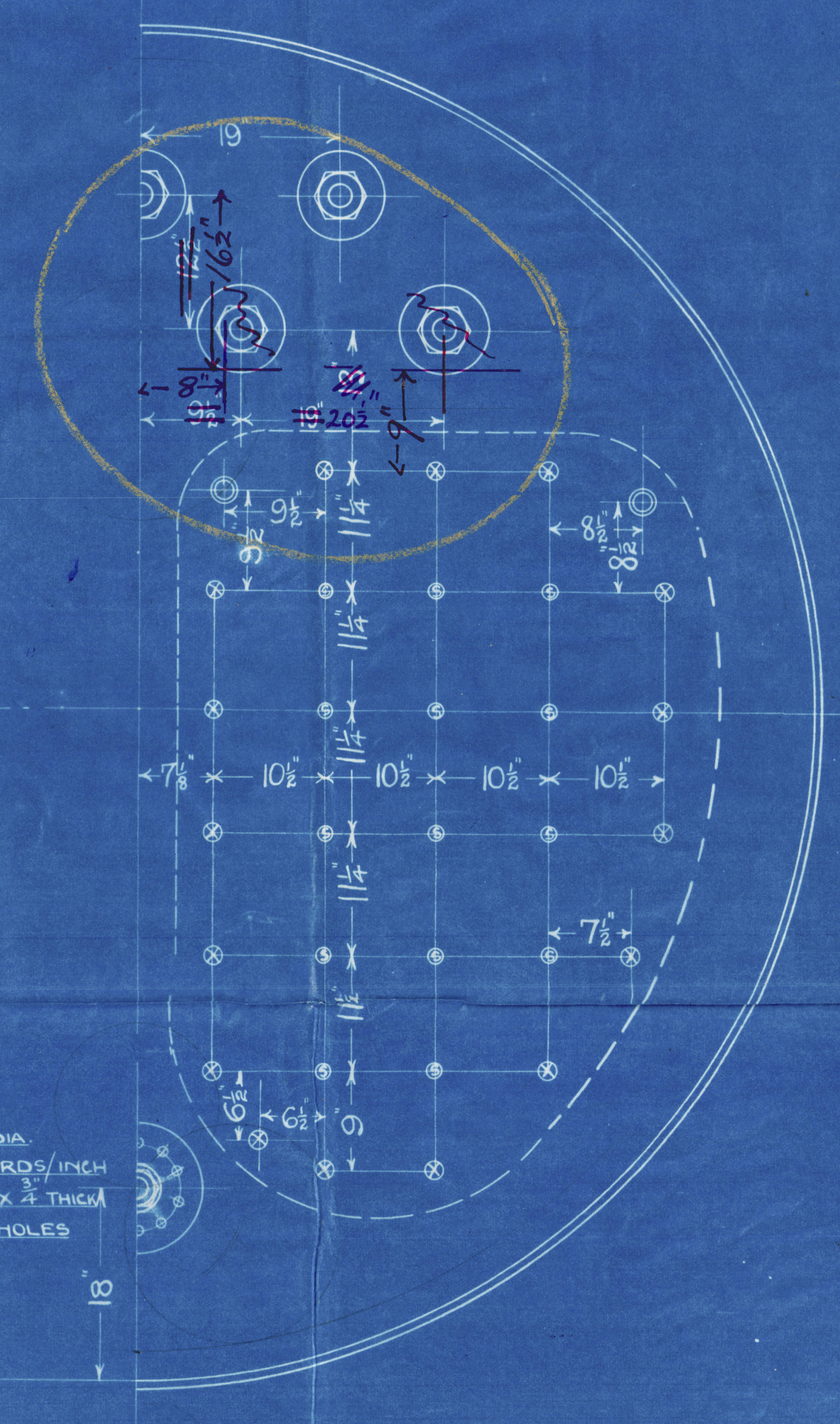
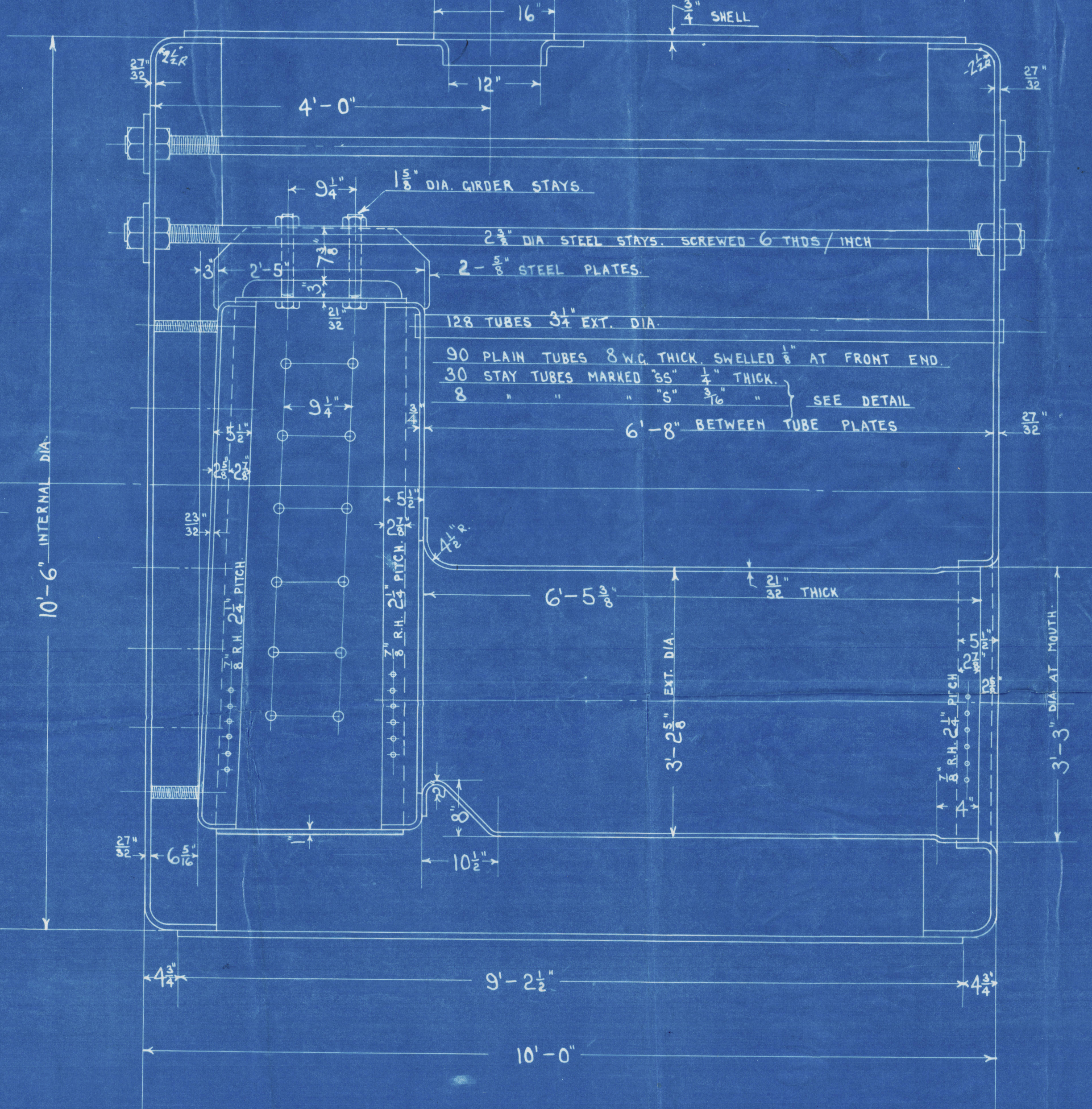


LIMIT OF TENSILES		
DESCRIPTION	TENSILE	MATERIAL
SHELL, BUTTS, & GIRDERS	28 TO 32 TONS	SIEMENS MARTIN MILD STEEL
BALANCE OF PLATES	26 TO 30 "	" " " "
LONGITUDINAL STAYS	28 TO 32 "	" " " "
SCREWED STAYS	26 TO 30 "	" " " "
RIVET BARS	26 TO 30 "	" " " "
TUBES	"	WROT IRON

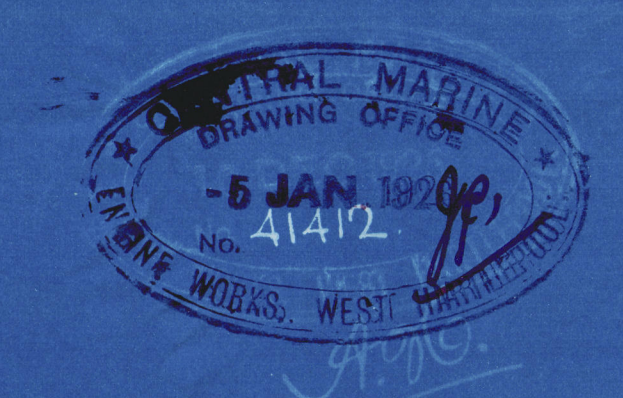
BOILER PARTICULARS	
ONE BOILER	
HEATING SURFACE OF TUBES	725
" " " FURNACES	72
" " OF COMB. CHAMBERS	107
" " BACK TUBE PLATE	23
" " FRONT	14
TOTAL	941
GRATE AREA (5'-6" BARS)	34.2
RATIO HEATING SURFACE GRATE SURFACE	27.5

SCREWED STAYS			
MARK	DIA.	THREADS/INCH	EFF. AREA
○	1 1/2"	9	1.73 D
⊗	1 1/2"	9	2.03
⊙	2"	9	2.359
⦿	2"	9	2.71

ALL SCREWED STAYS NUTTED AT BOTH ENDS



STEEL STAY 2" DIA.
 SCREWED 6 THREADS/INCH
 WASHER 12 DIA X 1/2 THICK
 8 DIA RIVET HOLES



CENTRAL MARINE ENGINE WORKS
 WEST HARTLEPOOL

100 P
 6/1/26

9/1/26

DONKEY BOILERS

Nos TR 314, R 315, & R 316.

CENTRAL MARINE ENGINE WKS.

VY M GRAY & CO LD

S.S. Nos 979, 980, 981.

TR 314

No 979.

No 3681

Lloyds Test

275 lb

WP 150 lb

22.3.26 RDS

Npe R/b

16414.

R 315

980.

No 3685

Lloyds Test

275 lb

WP 150 lb

4.6.26 RDS

TR 316

981.

No 3689

Lloyds Test

275 lb

WP 150

9.11.26 RDS

16416

16465.



© 2020

Lloyd's Register
Foundation

W350-0068