

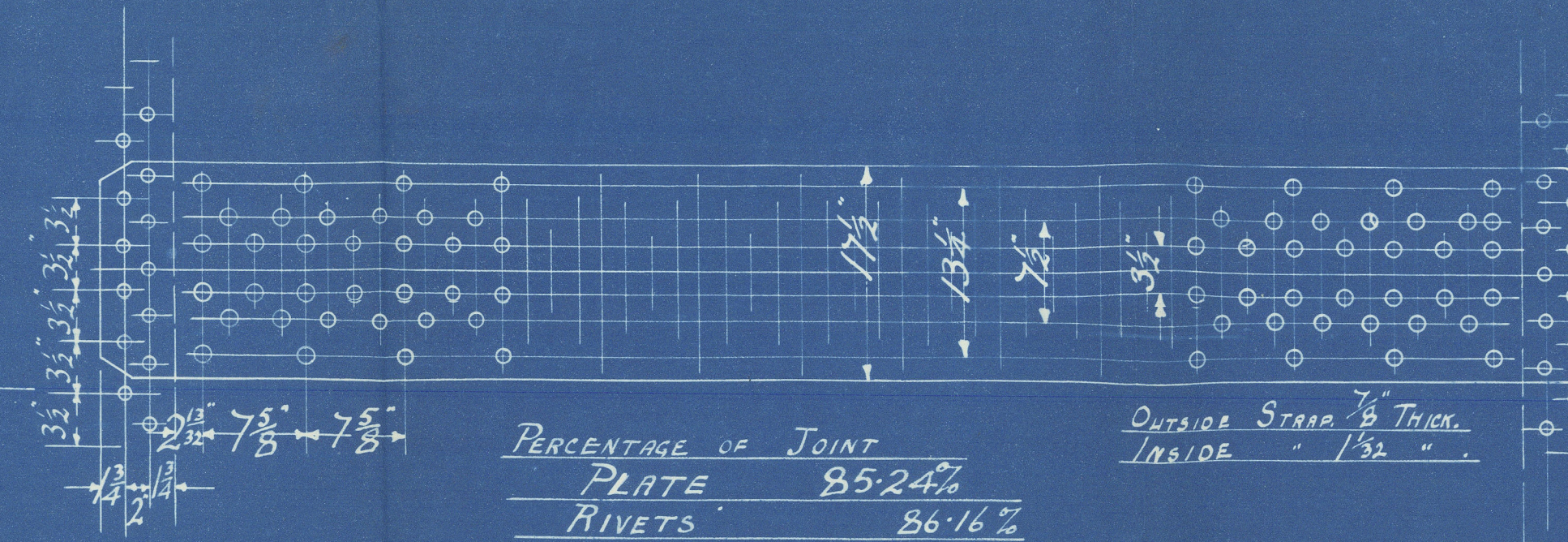
DIMENSIONS.

1. 3. 20

LENGTH OF FIRE BAND	
AREA OF FIRE GRATE	
DIAM OF TUBES OUTSIDE	3 1/2"
LENGTH OF TUBES OVER PLATES	6' 8 1/2"
Nº OF TUBES	190
SURFACE OF TUBES	1138 5
TOTAL HEATING SURFACE	1470 4
WORKING PRESSURE	180
DIAM OF SAFETY VALVE	

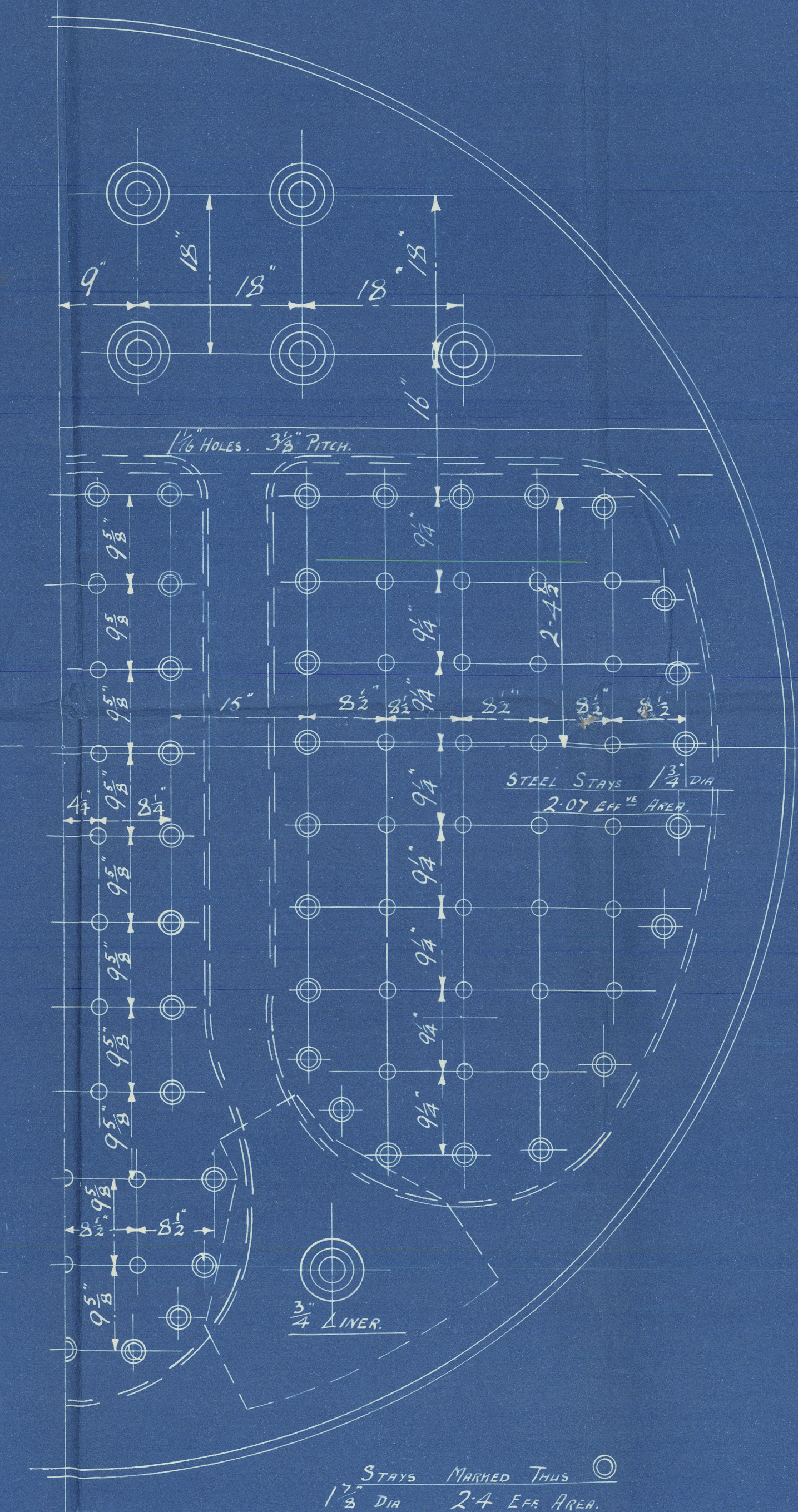
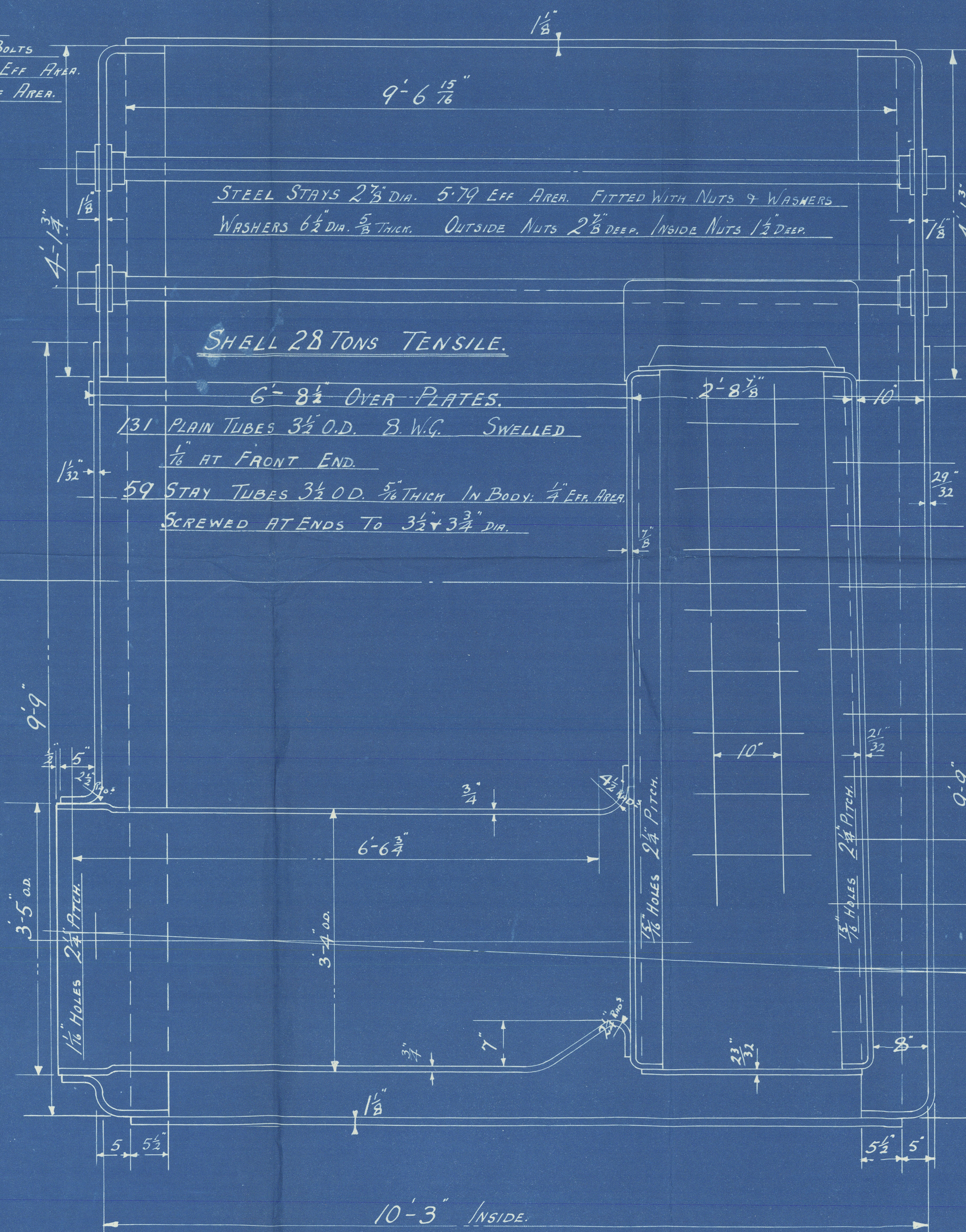
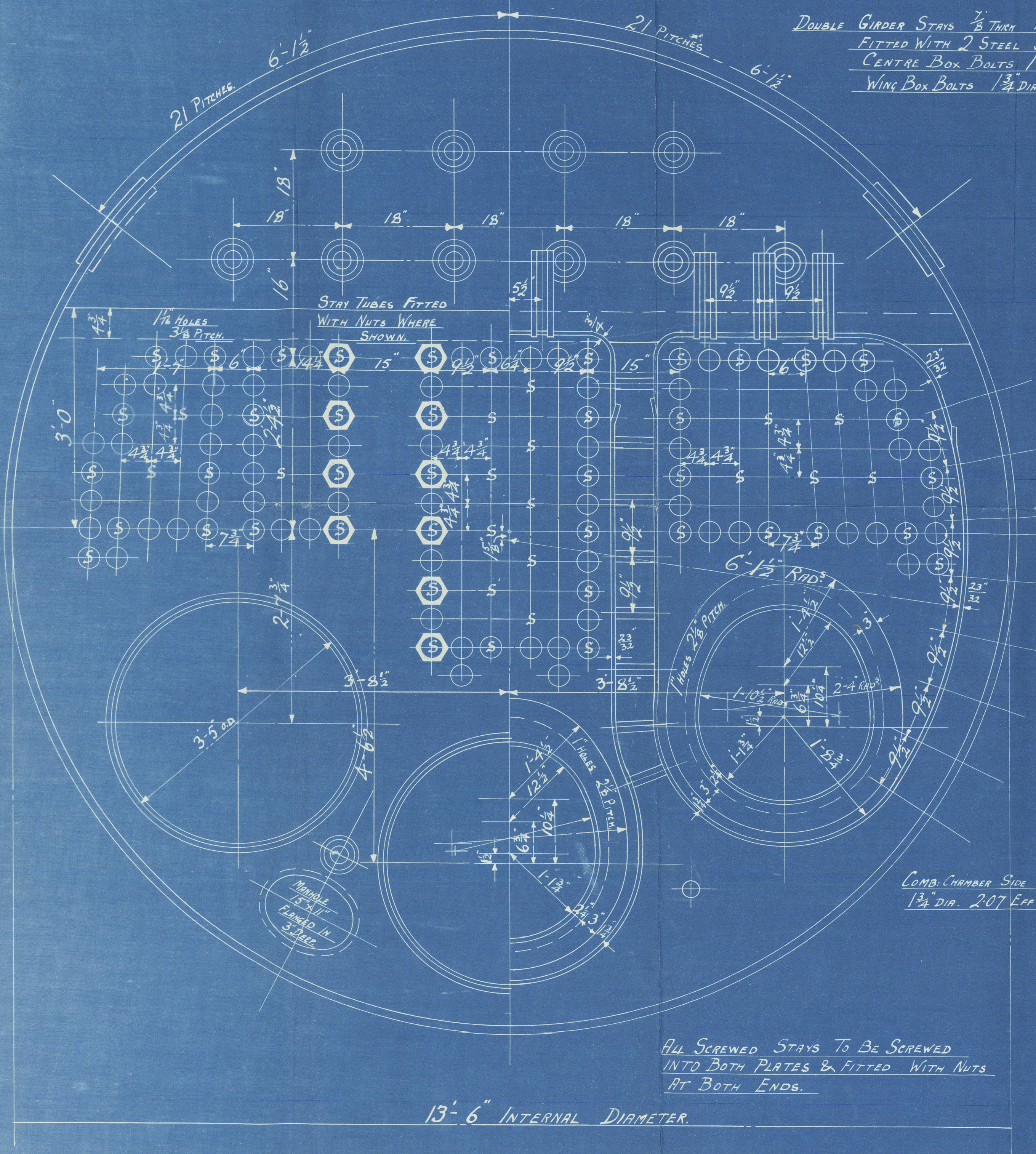
LONGITUDINAL JOINT :- HOLES DRILLED 1/8" DIA. 7 1/8" PITCH.

CIRCUMFERENTIAL JOINT :- HOLES DRILLED 1/8" DIA.



MANHOLE IN SHELL 16" x 12"
LINED INSIDE WITH PLATE 1/8" THICK 7" BROAD.

DOUBLE GIRDER STAYS 7/8" THICK 10 1/2" DEEP
FITTED WITH 2 STEEL SUPPORTING BOLTS
CENTRE BOX BOLTS 1 1/8" DIA 24 EFF. AREA.
WING BOX BOLTS 1 3/4" DIA 207 EFF. AREA.



ALL SCREWED STAYS TO BE SCREWED INTO BOTH PLATES & FITTED WITH NUTS AT BOTH ENDS.

COMB. CHAMBER SIDE STAYS
1 3/4" DIA. 207 EFF. AREA.

STAYS MARKED THUS
1 3/8" DIA 24 EFF. AREA.

PLAN Nº 5073

STEEL BOILER Nº 1245

CHARLES D. HOLMES & CO LTD
ENGINEERS & BOILER MAKERS
HULL

DRAWER Nº
DRAWING Nº
Lloyd's Register
Foundation

Holmes
Main Boiler

No 1245
WP 180 lbs

Duplicate Nos 1229.32-33
Dup SS. Beerton

Steel Report No. 32903

W35-0197



© 2020

Lloyd's Register
Foundation