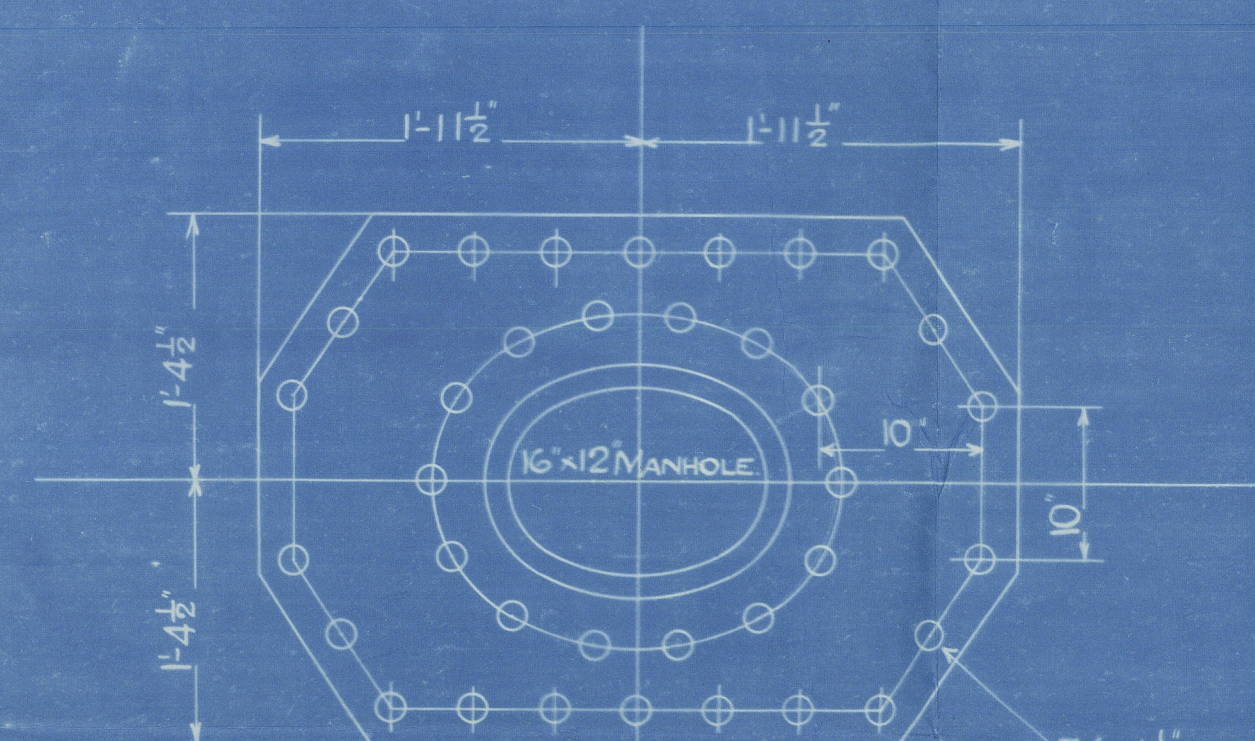


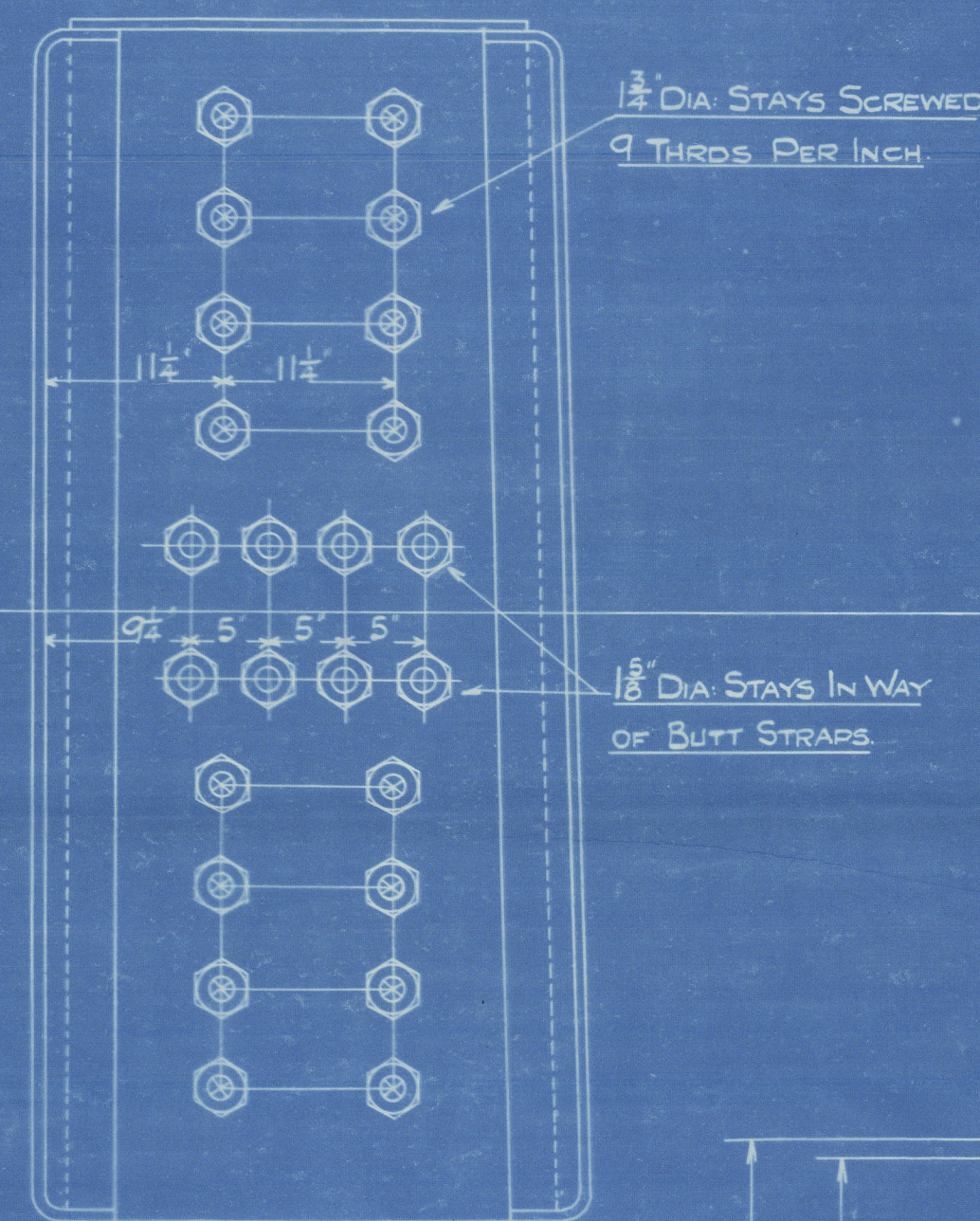
| HEATING SURFACE                       |        |
|---------------------------------------|--------|
| 362 TUBES 3" EXT. DIA. x 8'-3" B.T.P. | 2345 # |
| FURNACES                              | 186 "  |
| COMBUSTION CHAMBERS                   | 260 "  |
| BACK TUBE PLATE                       | 46 "   |
| FRONT TUBE PLATE                      | 42 "   |
| TOTAL 1 BOILER                        | 2879 " |
| 3 BOILERS                             | 8637 " |
| GRATE SURFACE 18" x 5'-6" BARS        | 68 "   |
| WORKING PRESSURE - 200 LBS.           |        |
| TEST PRESSURE - 350 LBS.              |        |

OIL FUEL ONLY.

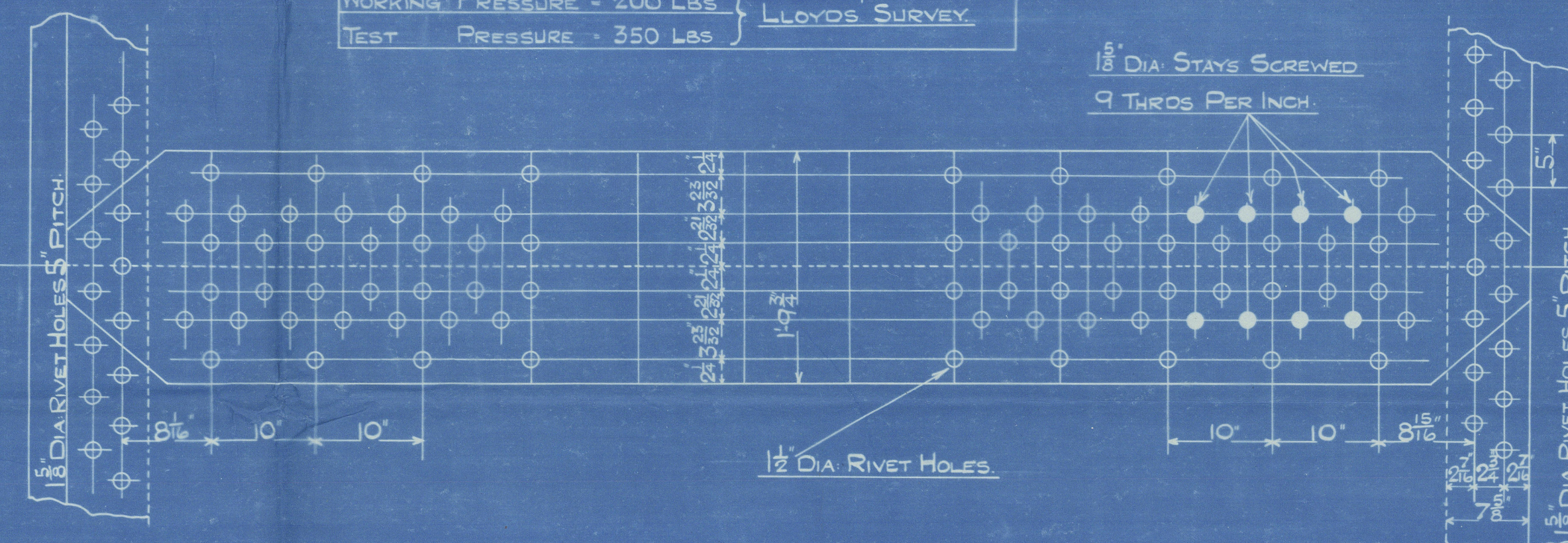
LLOYD'S SURVEY.



36-1/2" RIVET HOLES.  
1 1/2" COMPENSATION PLATE.



1 1/2" DIA. STAYS IN WAY  
OF BUTT STRAPS



1 1/2" DIA. STAYS SCREWED  
9 THRS. PER INCH.

SHELL RIVETING.  
DOUBLE BUTT STRAP JOINTS.  
SHELL PLATES 1 1/2" THICK. INNER BUTT STRAPS 1 1/2" OUTER BUTT STRAPS 1 1/2" THICK.  
RIVET HOLES 1 1/2" DIA. GREATEST PITCH 10".  
PLATE SECTION - 85%. RIVET SECTION 93-43.  
TENSILE STRENGTH OF SHELL PLATES 29 TO 33 TONS PER Q".  
FURNACES & COMB. CHAMBER PLATES 26 TO 30 TONS PER Q".  
GIRDER PLATES 28 TO 32 TONS Q".  
MANHOLE RING 26 TO 30 TONS Q".

NOTE!  
ALL PLATE EDGES PLANED & ALL HOLES TO BE DRILLED IN PLACE.

ALL COMBUSTION CHAMBER SCREWED STAYS SCREWED  
9 THRS. PER INCH & NUTTED WHERE SHOWN WITH NUTS.  
1/2" DEEP AT EACH END.

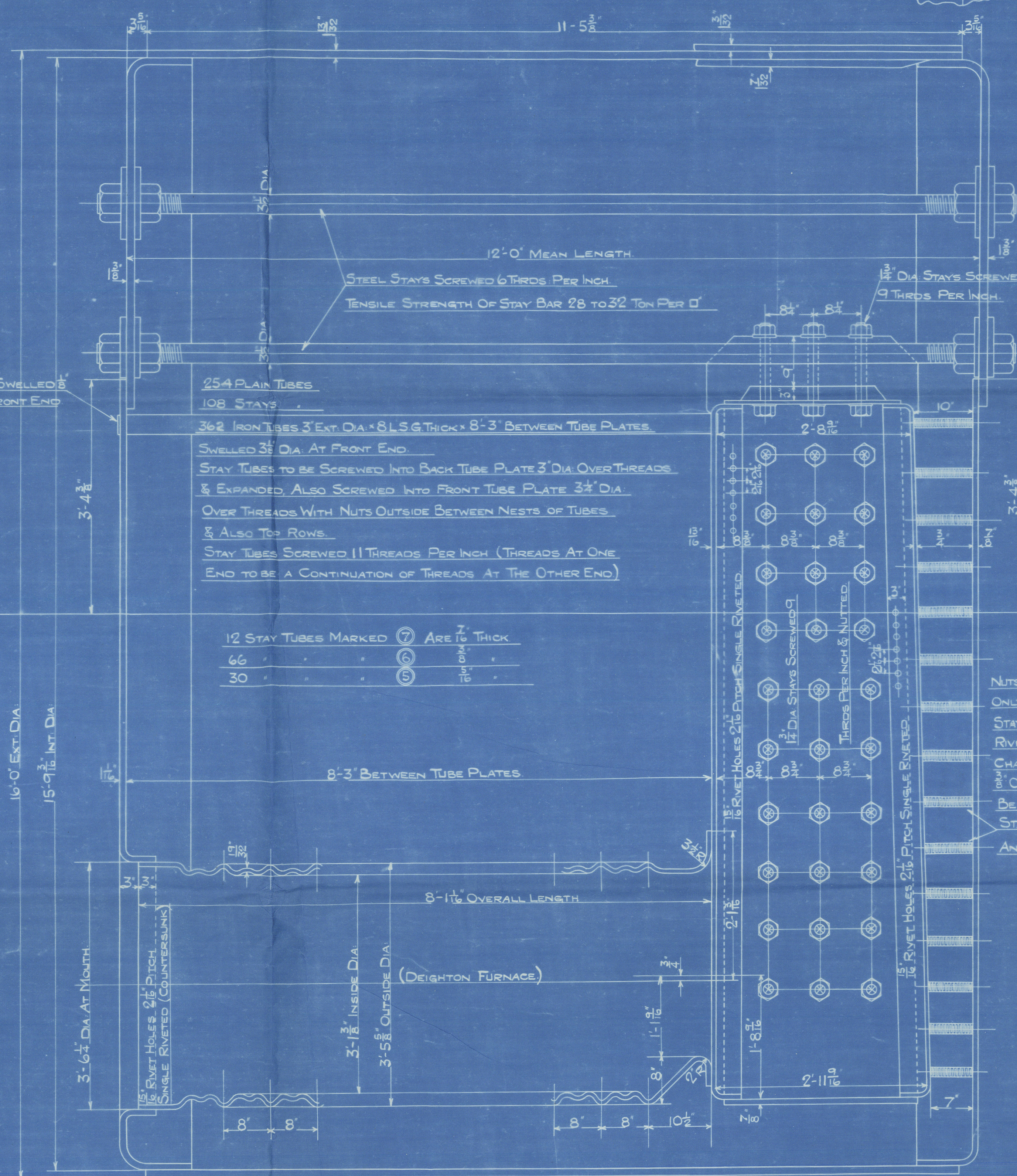
COMBUSTION CHAMBER STAYS MARKED THUS ● ARE 2" DIA.

● 1 1/2" DIA.  
○ 1 1/2" DIA.

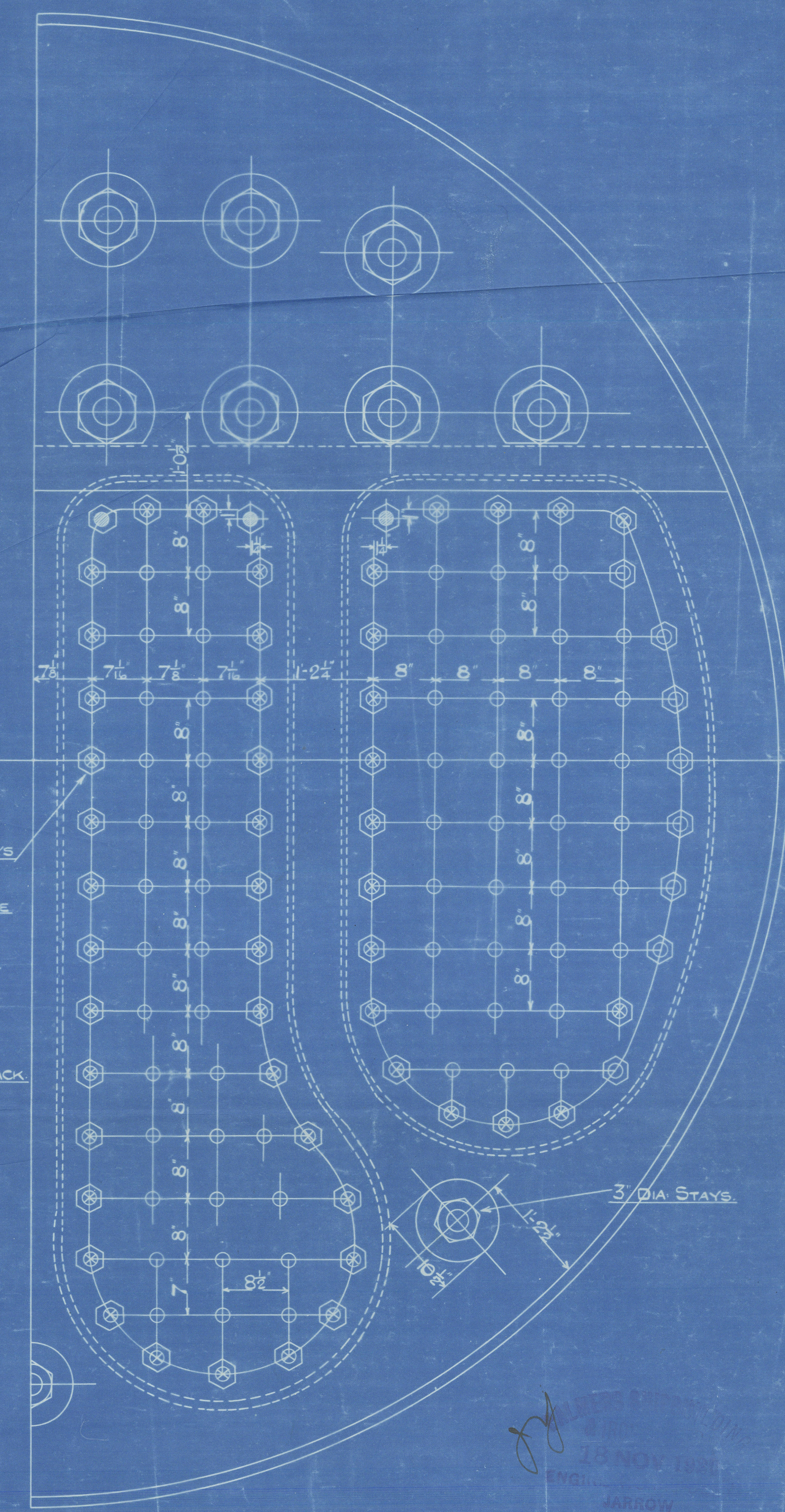
VIEW ON WING COMBUSTION CHAMBER

NOTE  
PLAIN TUBES SWELLED  
LARGER AT FRONT END

STAYS TO PROJECT 1/2" ON SHELL OF BOILER & BE CAULKED



NUTS FITTED ON MARGINAL STAYS  
ONLY.  
STAYS IN MODE OF BONES TO BE  
RIVETED OVER INSIDE COMB.  
CHAMBERS AND TO PROTECT  
FROM BACK OF BOILER AND  
BE CAULKED  
STAYS SCREWED AT RIGHT  
ANGLES TO COMB. CHAMBER BACK.





S.S. "BRITISH GENERAL"

MESSRS. PALMERS S.B. & I.C. LD.

Nº 926

MAIN BOILERS.

W.P. 200 LBS. Q."

NEWCASTLE ON TYNE.

Report No. 45845.

RETAIN



© 2020

Lloyd's Register  
Foundation

W346-0133