

SHELL RIVETING

DOUBLE BUTT STRAP JOINTS

SHELL PLATES 3/8" THICK INNER BUTT STRAPS 1/2" THICK OUTER BUTT STRAPS 3/8" THICK

RIVET HOLES 3/4" DIA. GREATEST PITCH 4 3/8"

PLATE SECTION 81% RIVET SECTION 91 1/2%

TENSILE STRENGTH OF SHELL PLATE 28 TO 32 TONS / sq"

FURNACES & COMB. CHAMBER PLATES 24 TO 30 TONS / sq"

END PLATES 26 TO 30 TONS / sq"

GIRDER PLATES 28 TO 32 TONS / sq"

MANHOLE RINGS 24 TO 30 TONS / sq"

STEAM SPACE STAYS 28 TO 32 TONS / sq"

MANHOLE STAYS 28 TO 32 TONS / sq"

HEATING SURFACE	
154 TUBES 3" EXT. DIA. x 7'-4" B.T.P.	986 sq'
FURNACES	85
COMB. CHAMBERS	102
FRONT TUBE PLATE	25
BACK	22
TOTAL	1119 sq'
DIL. FUEL	15-10 B.T.U.
WORKING PRESSURE - 120 LBS.	LLOYD SURVEY
TEST 230	

W.P. OF SHELL  $(2-2) \times 28 \times 81 = 124.6$  LBS.

75 x 196

SHELL HYDRAULIC RIVETED WHERE PRACTICABLE

ALL HOLES DRILLED IN PLACE AFTER BENDING

CIRC. SEAM DOUBLE RIVETED 1" DIA. RIVET HOLES

ALL COMBUSTION CHAMBER SCREWED STAYS WROST IRON SCREWED

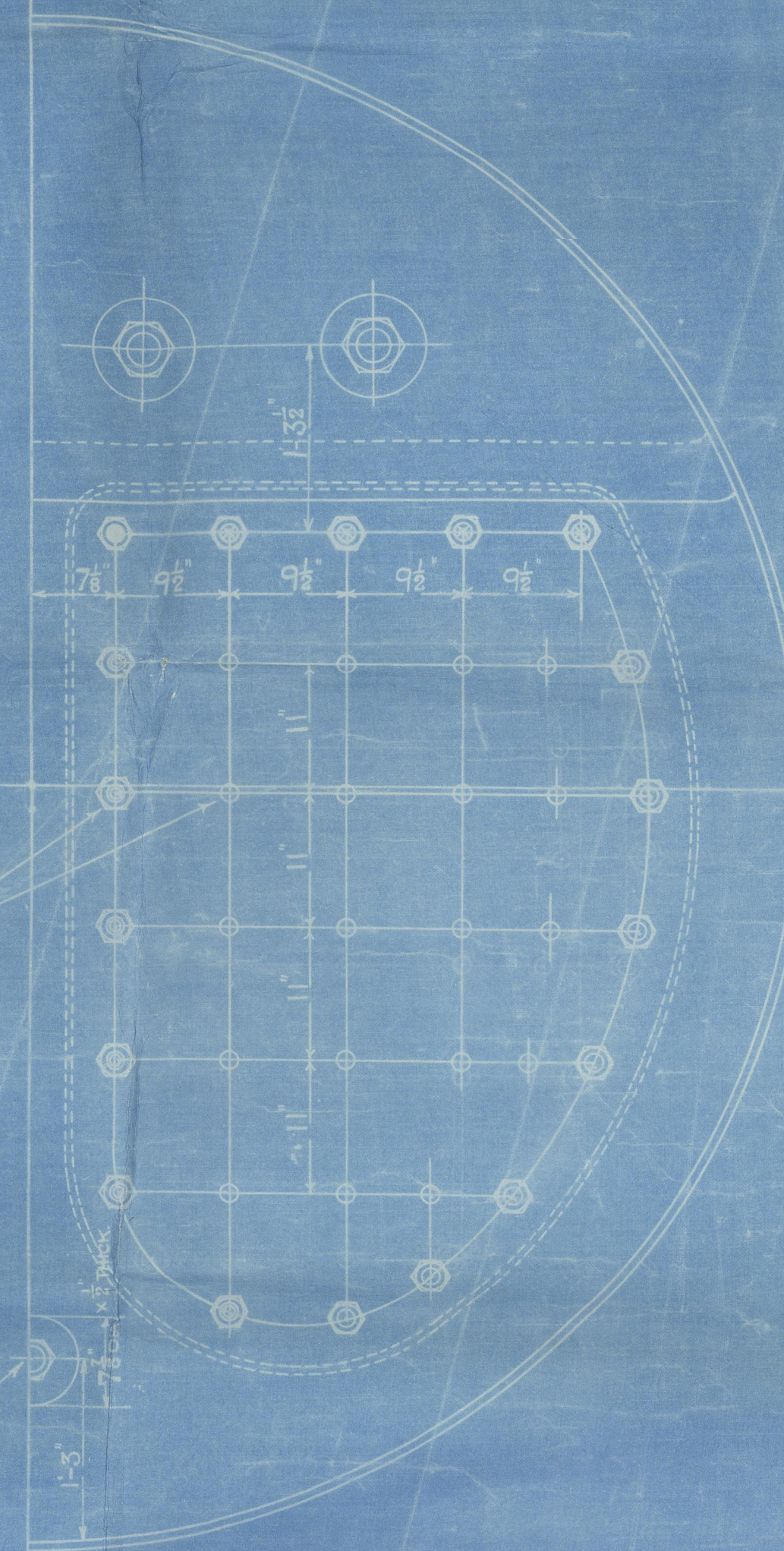
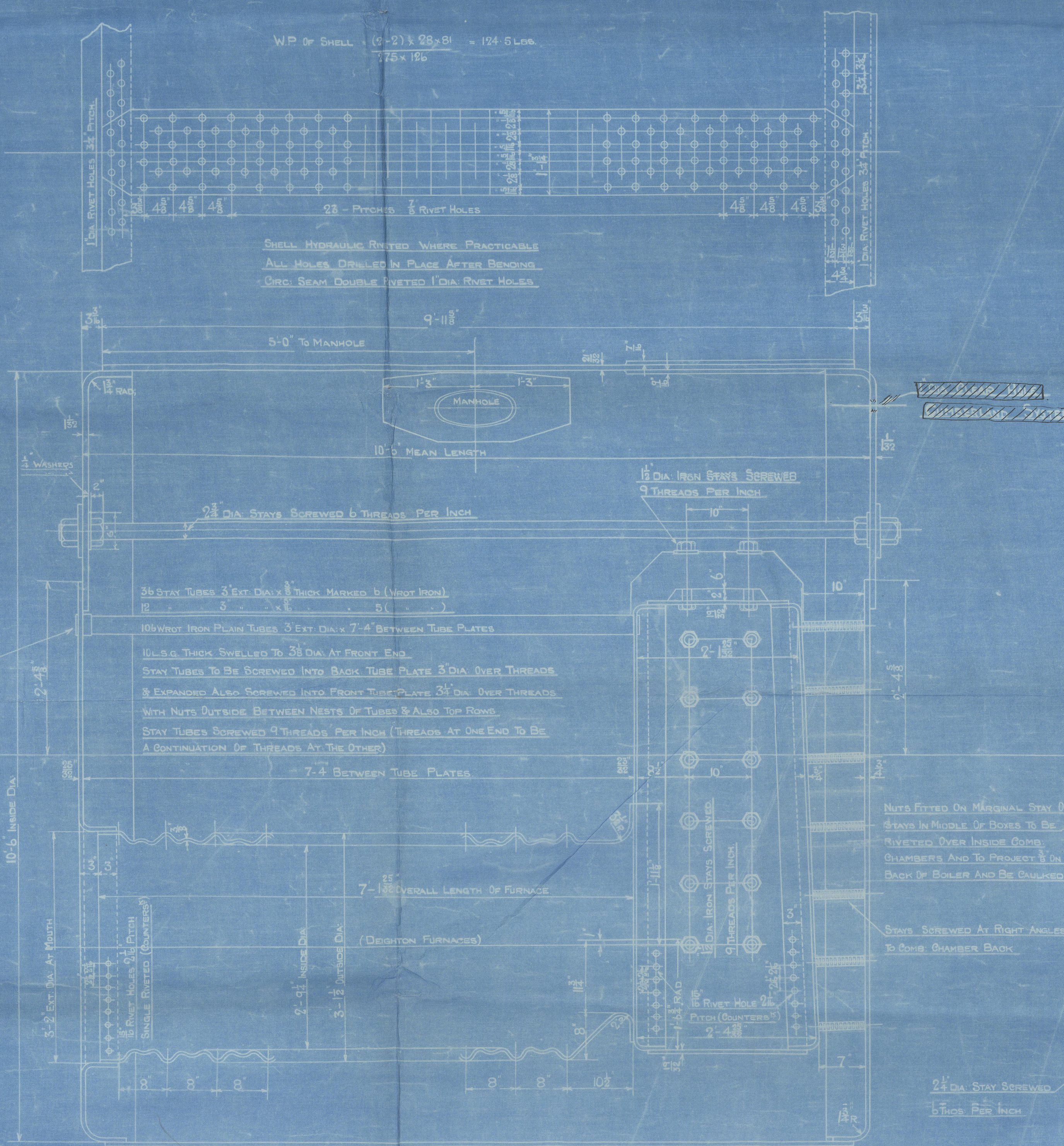
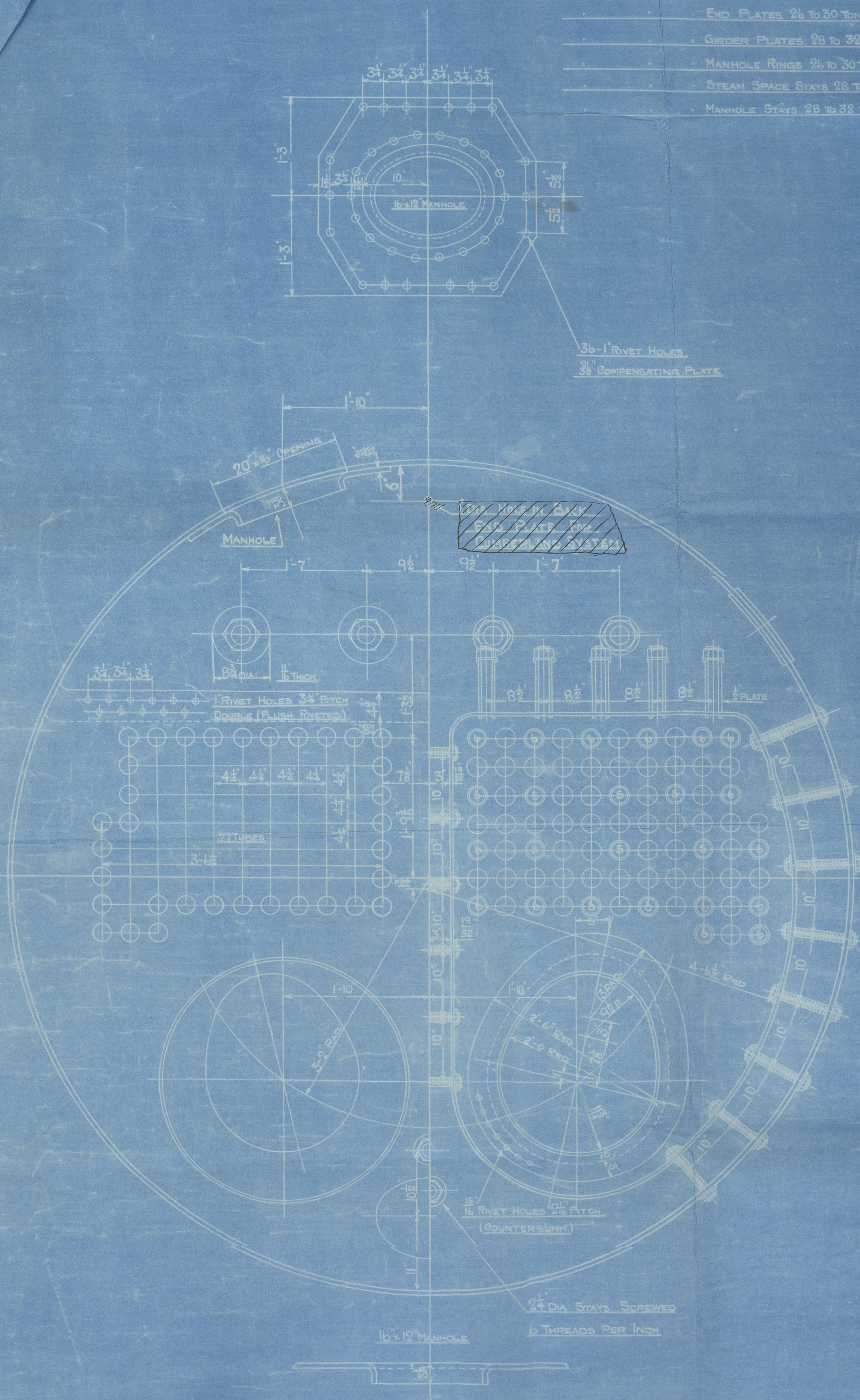
9 THREADS PER INCH & NUTTED WHERE SHOWN WITH

NUTS AT EACH END

COMBUSTION CHAMBER STAYS MARKED THUS  $\odot$  ARE 1 1/2" DIA. NUTS 1" DEEP

ALL COMBUSTION CHAMBER SCREWED STAYS OF BEST IRON

QUALITY & TO LLOYD'S TESTS & REQUIREMENTS



TO LLOYD'S REQUIREMENTS

DONKEY BOILER. (1-OFF)

SCALE 1"=1 FOOT

ALL STEEL EXCEPT WHERE OTHERWISE STATED

ENG N° 959

9/3/26





DONKEY BOILER

No 959

---

120 lbs<sup>sq</sup>

---

---

S. S. BRITISH INVENTOR  
NEWCASTLE ON TYNE.

Report No. 80522.

---

RETAIN



© 2020

Lloyd's Register  
Foundation

W346-0034