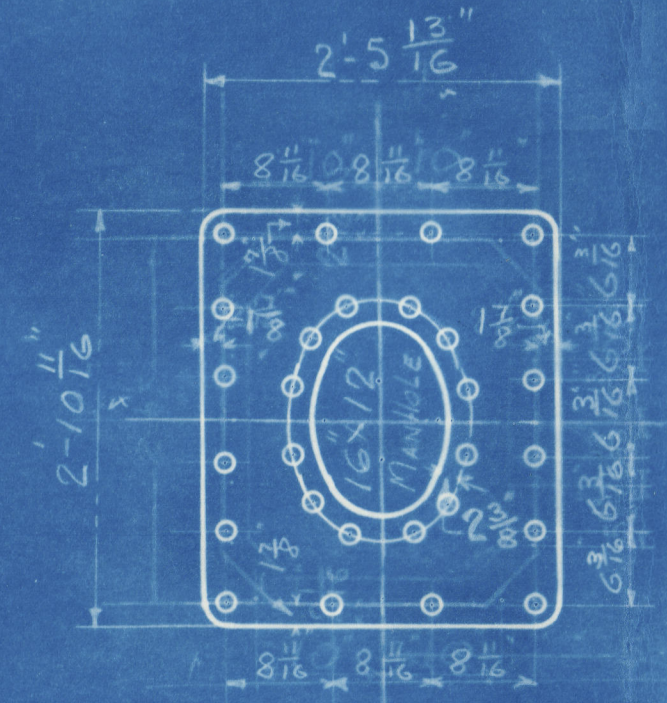
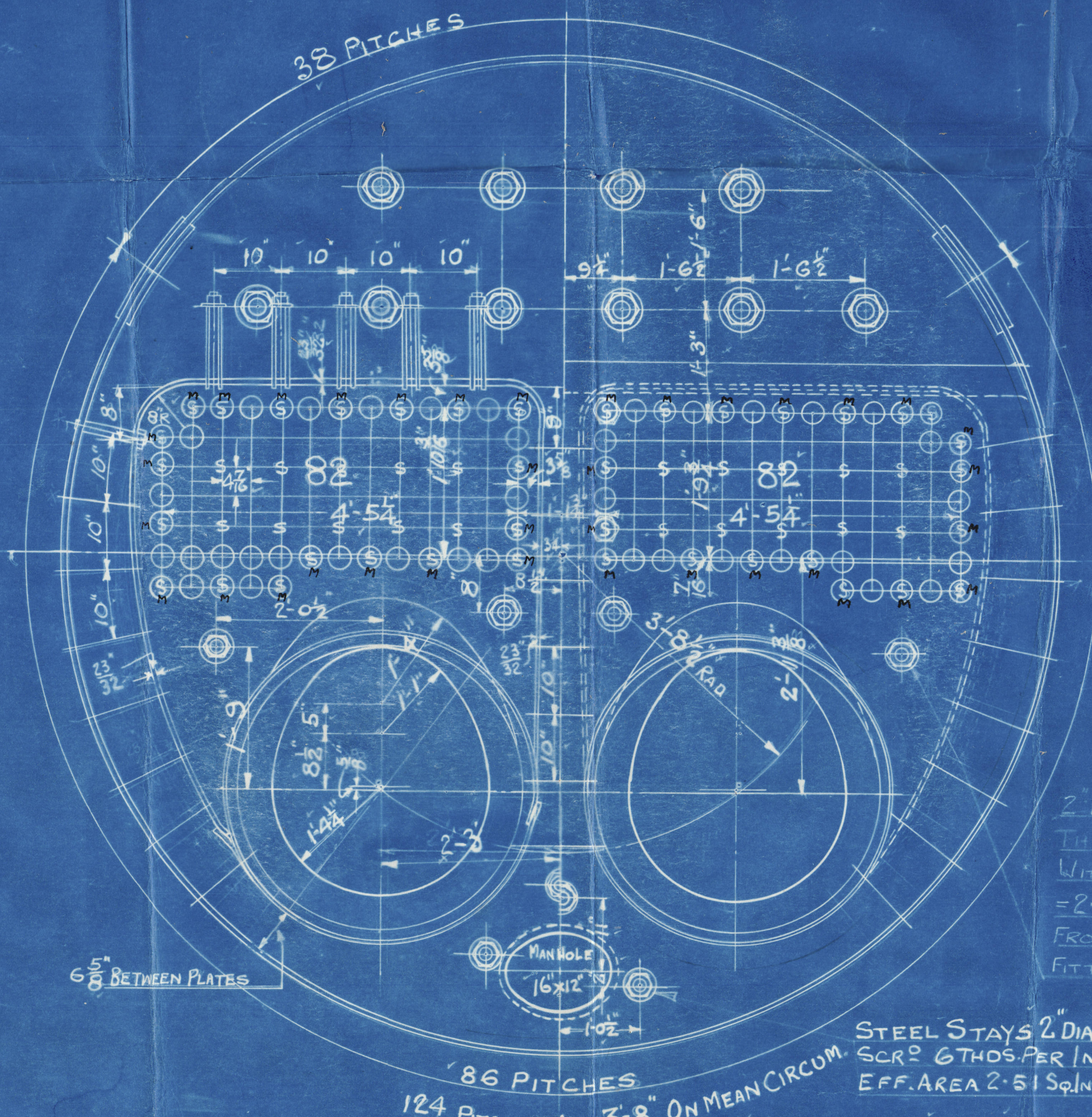
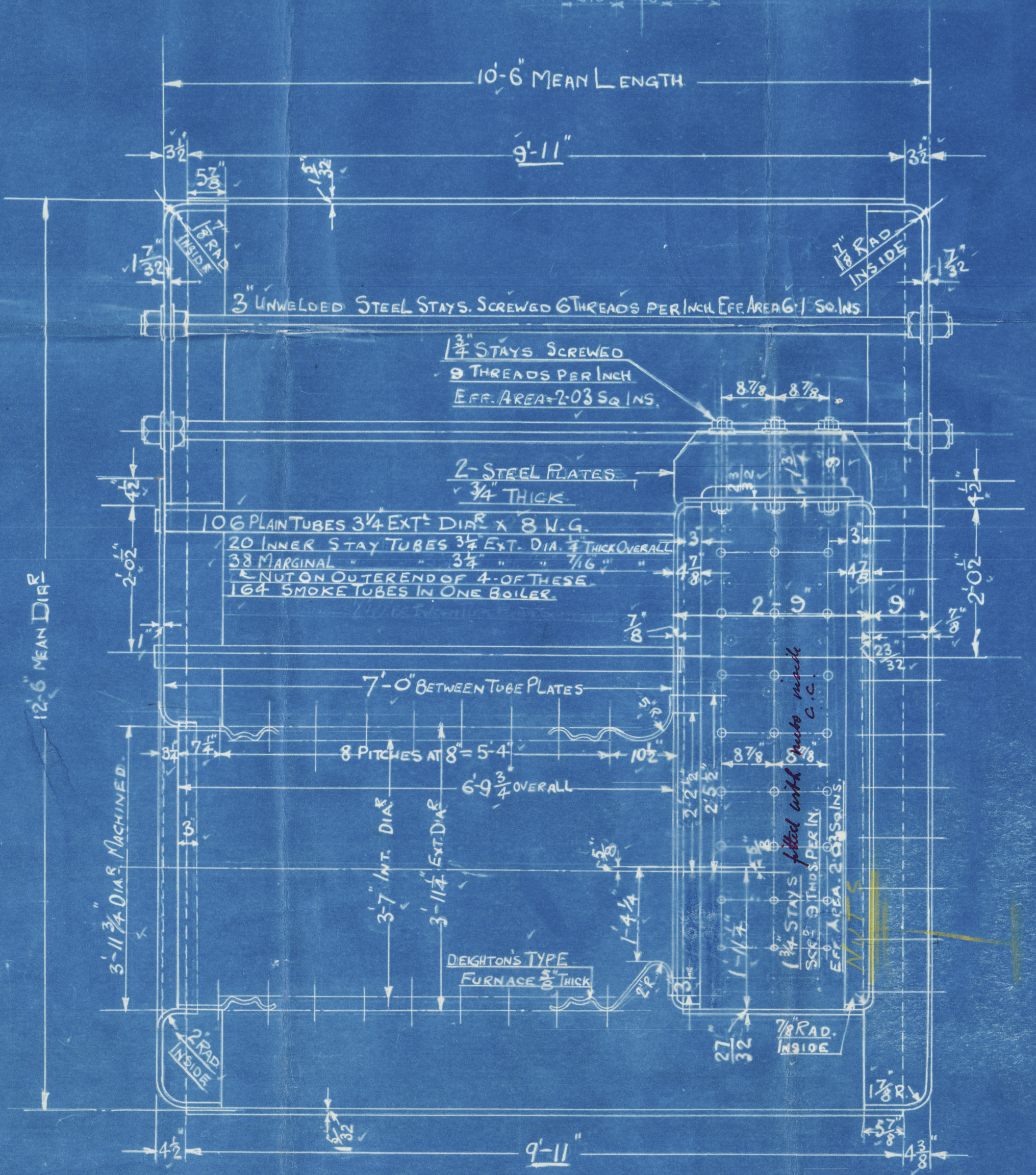


12/12/28



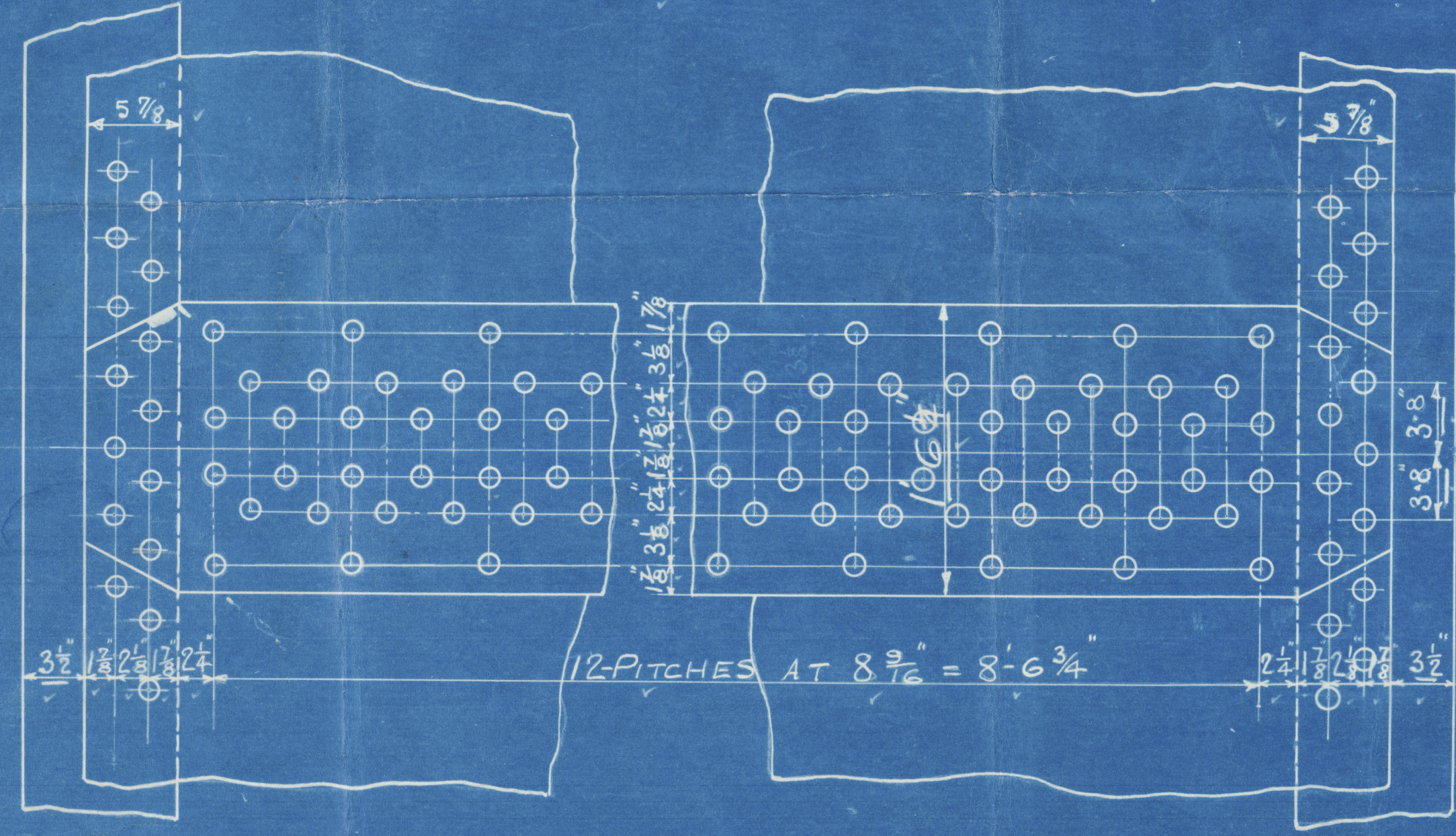
MANHOLE COMPENSATING RING.  
1/16" THICK 1/16" RIVET HOLES.



MARGINAL STAYS 2" DIA.  
SCRD 9 THDS/IN EFF AREA  
2' 7 1/2" NUTS ON BOTH  
ENDS.

INSIDE STAYS 1 1/2" DIA.  
SCRD 9 THDS/IN EFF AREA 2' 0 3/4"  
NUTS ON INNER END ONLY.  
2" DIA. STEEL STAYS SCRD  
THRD. COMB. TUBE PLATE  
WITH NUTS ON BOTH SIDES AT 8 THDS/IN  
= 2' 6 3/4" SCRD 6 THDS/IN AT  
FRONT END EFF AREA = 2' 6 1/2" AND  
FITTED WITH DOUBLE NUTS.

STEEL STAYS 2" DIA.  
SCRD 6 THDS/IN  
EFF. AREA 2' 5 1/2" SQU.

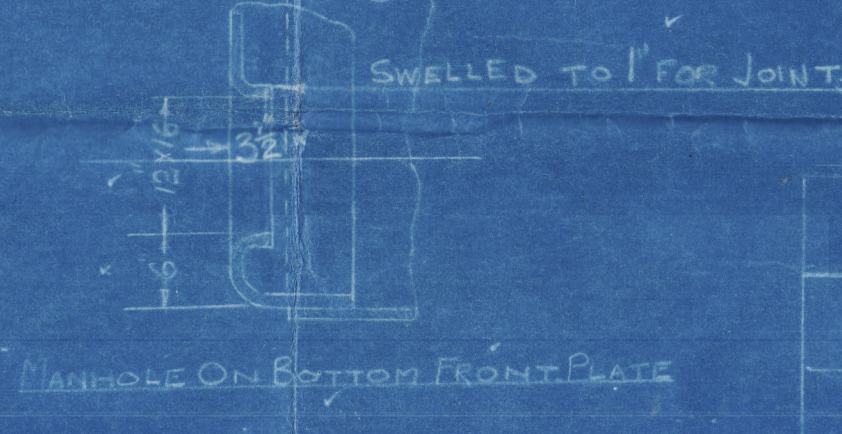


OUTER BUTT STRAP 7/8" THICK  
INNER BUTT STRAP 1" THICK

LONGITUD. SEAMS 1/16" RIVET HOLES

CIRCUM. SEAMS 1/4" RIVET HOLES

PLATE %	86.07
RIVET %	86.14
COMBINED %	89.4
PLATE %	67.0
RIVET %	43.7



MATERIAL ALL MILD STEEL EXCEPT TUBES

TENSILE STRENGTH OF SHELL PLATES, BUTT STRAPS

GIRDERS, AND MANHOLE DOUBLERS 28-32 TONS/IN

TENSILE STRENGTH OF END PLATES & COMB. CHAMBER PLATES 26-30 TONS.

STEAM SPACE AND WATER SPACE LONG STAYS 28-32 TONS

TENSILE STRENGTH, COMB. CHAMBER SCRD STAYS 26-30 TONS TENSILE STRENGTH

SAFETY VALVES 2-COCKBURN'S IMPROVED HIGH LIFT 2" DIA.

HOLE IN BOILER 2 1/2" DIA.

WASTE PIPE 2 1/2" DIA.

COMPENSATING PLATES OR SADDLES WILL BE FITTED UNDER STOP VALVES IF OPENING EXCEEDS 5 1/2" DIA.

- HEATING SURFACE -	
- ONE BOILER -	
TUBES	= 977.50 FEET.
OTHER	= 283 " "
TOTAL	= 1260 " "

# AUXILIARY BOILER. - ONE OFF. -

SCALE 3/4" = ONE FOOT

TO PASS LLOYD'S SURVEY FOR 200 LBS W.P.

ENG N° 434

Shuman's 3/5 393





Raukin Blackmore

Circular Boiler

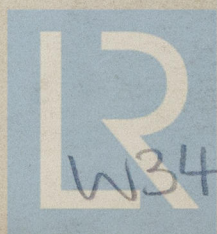
80.424 W.P. 200 lb

Duncan 8/5 393

S.S. "BIBURY"

GRN. REPORT N. 1912

RETAIN



© 2020

Lloyd's Register  
Foundation  
W343-0024