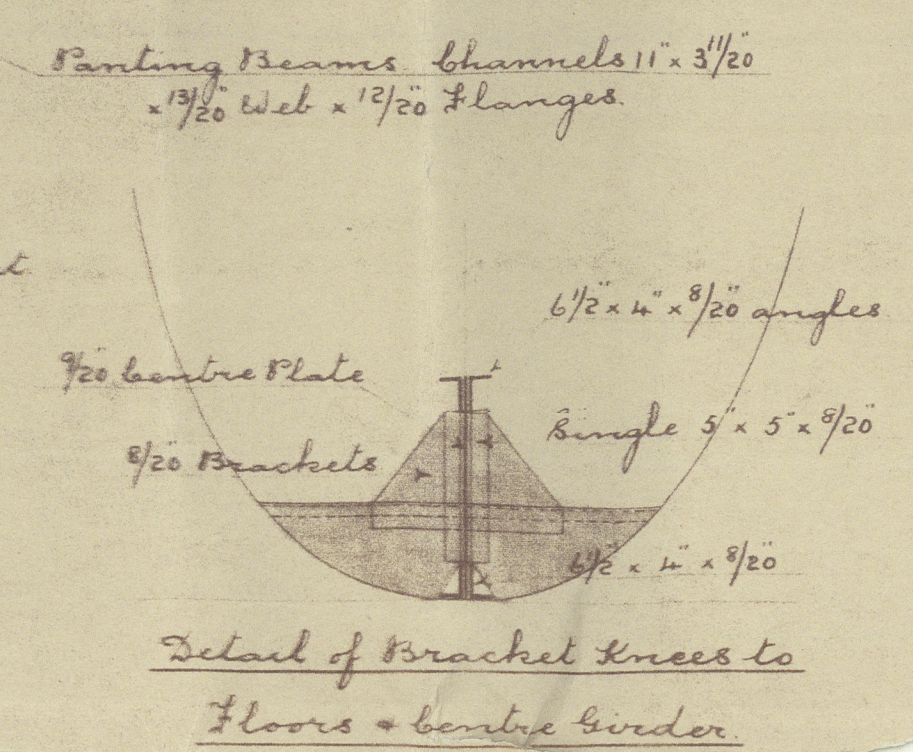
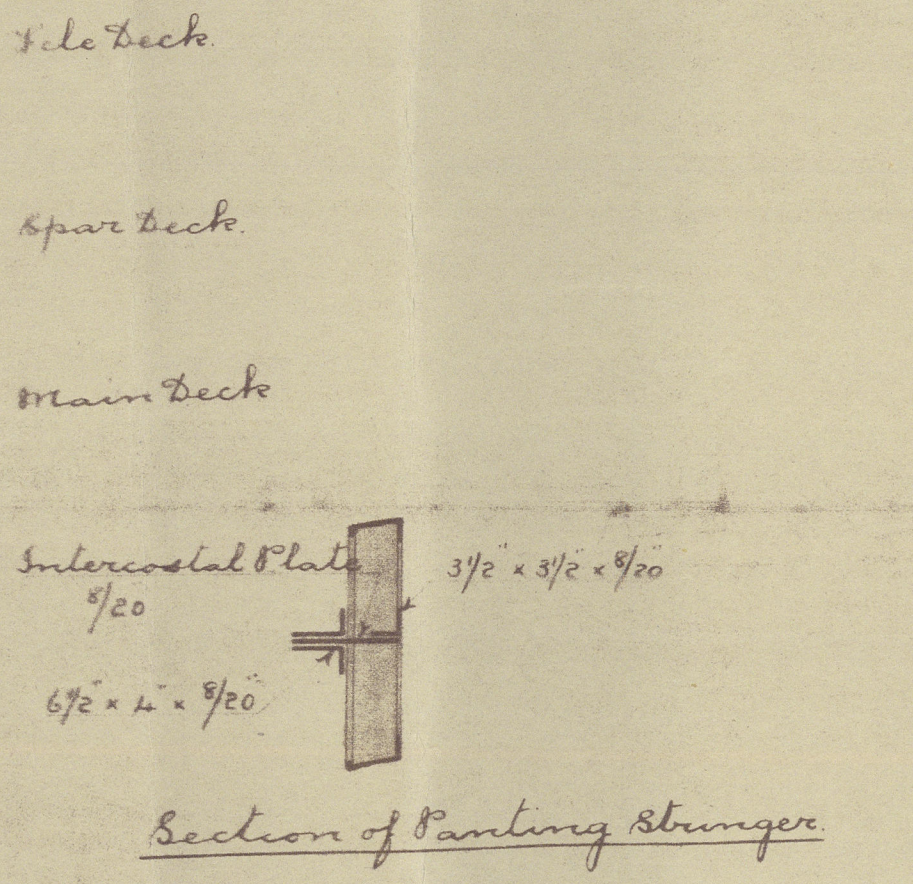
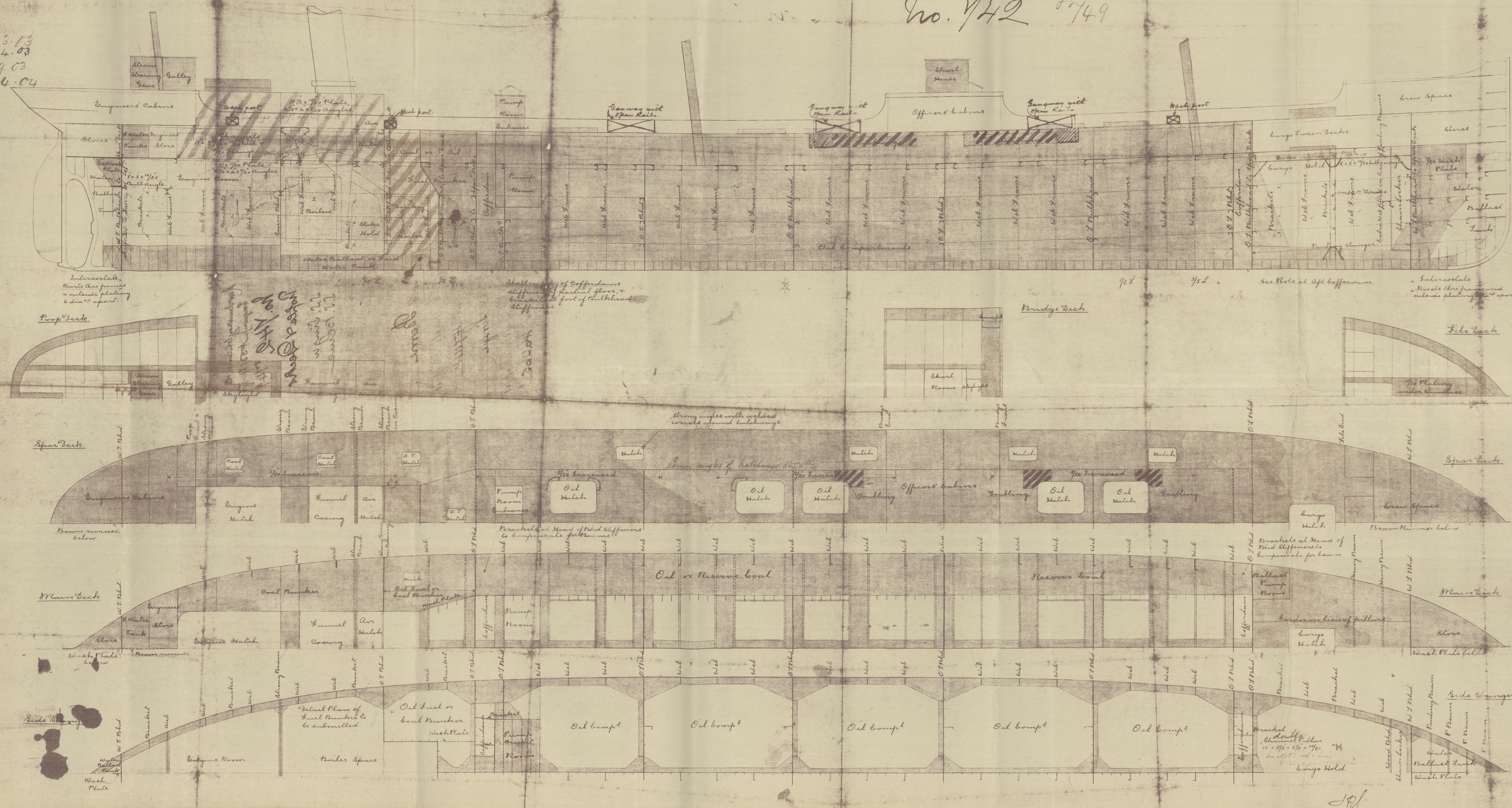


13.3.13
23.4.03
1.9.03
14.4.04

No. 142 1749



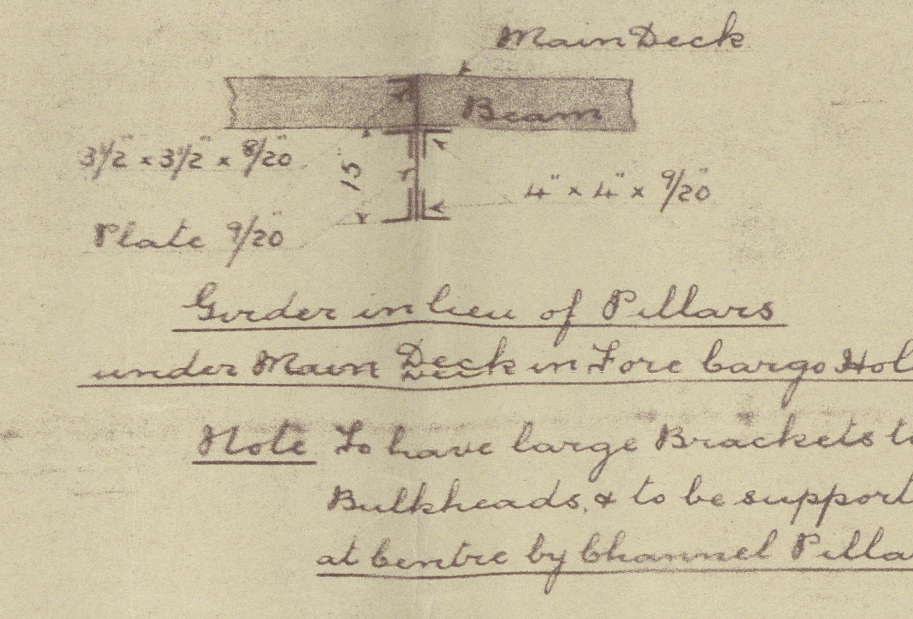
Oil Tanker

Principal Dimensions

Length overall	321'-0"
Length below decks	310'-0"
Breadth extreme	41'-6"
Depth moulded	28'-8"
Depth of hold	27'-5 1/2"
Draft of water (Tide gauge)	23'-0"

Scale 1/8" = 1 Foot

Glass 100 A1 Spar Decks Lloyd's



Underneath of Pillars
under Main Deck in Fore Cargo Hold

Note: To have large brackets to bulkheads & to be supported at centre by channel pillars

S.S. Bemis - built 1904 at
Newcastle.

Copy of profile & deck plan.

(File in plan book.)



© 2020

Lloyd's Register
Foundation

W342-0010