

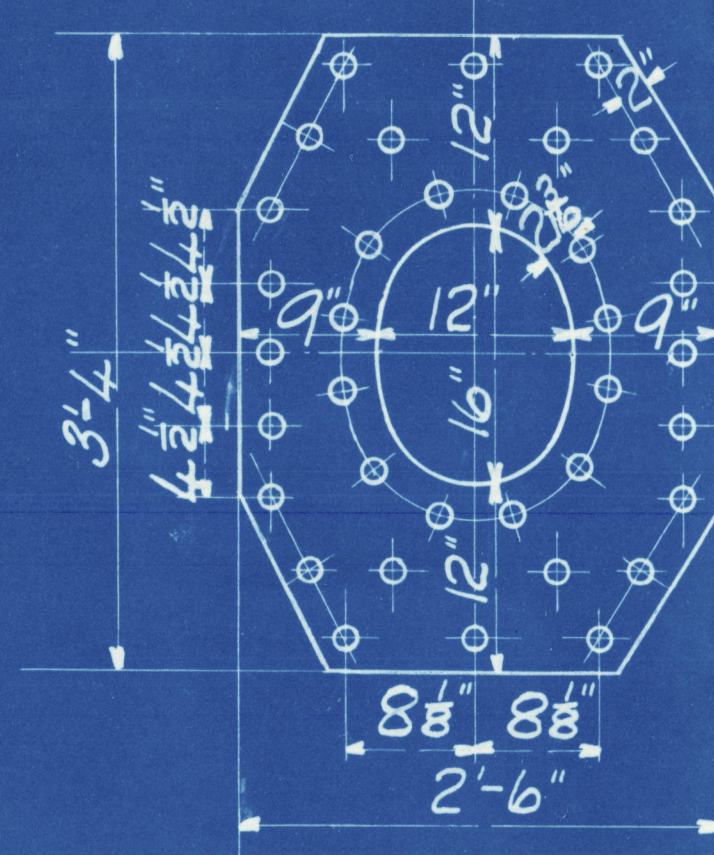
R.

18/6/23

DIAR OF BOILER  
LENGTH OF D<sup>o</sup>  
NUMBER OF TUBES  
LENGTH OF D<sup>o</sup>  
DIAR OF D<sup>o</sup> 3 1/2" AREA THRO TUBES 11.53 DFT  
HEATING SURFACE IN TUBES 1436 DFT.  
TOTAL HEATING SURFACE 1800 DFT.  
FIRE BAR SURFACE  
DIAR OF SAFETY VALVES 2 3/4"  
CUBIC FEET OF STEAM SPACE 340  
WORKING PRESSURE 180 LBS. LLOYDS

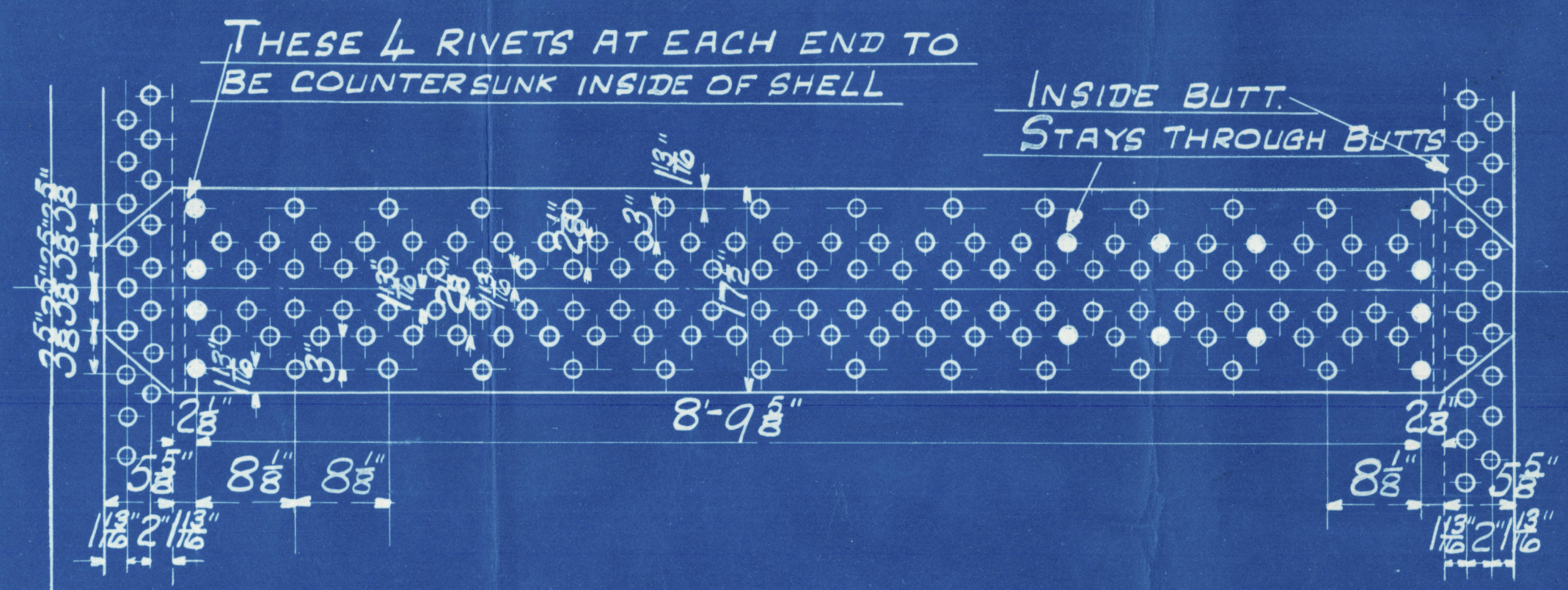
14'-0" INSIDE  
11'-0" EXT:  
224  
7'-0" B.P

1 1/2" DOUBLING PLATE  
RIVETS 1 1/2" DIA<sup>r</sup> HOLES 1 1/8"  
FITTED OUTSIDE SHELL WITH  
SHORT AXIS LONGITUDINALLY.



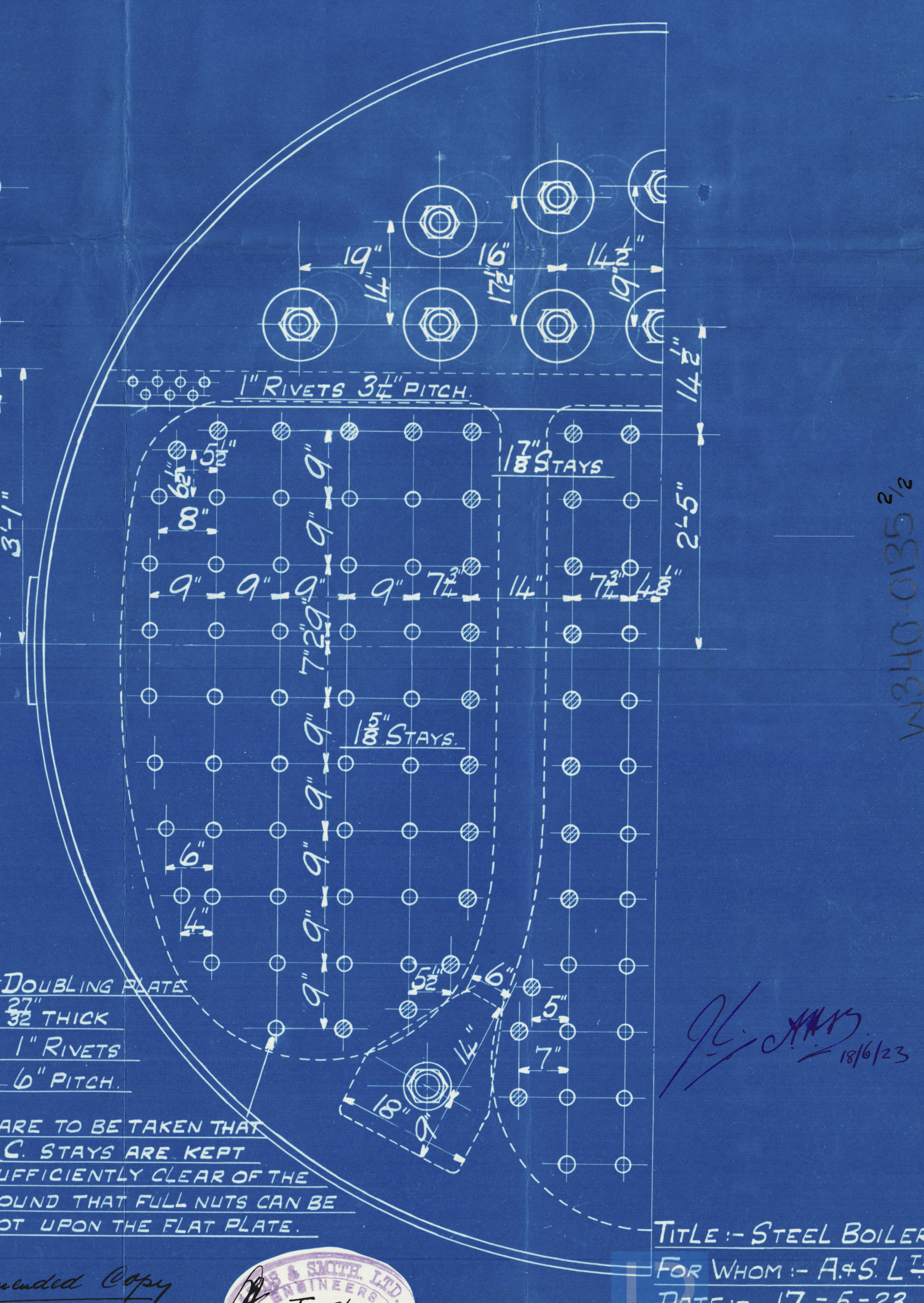
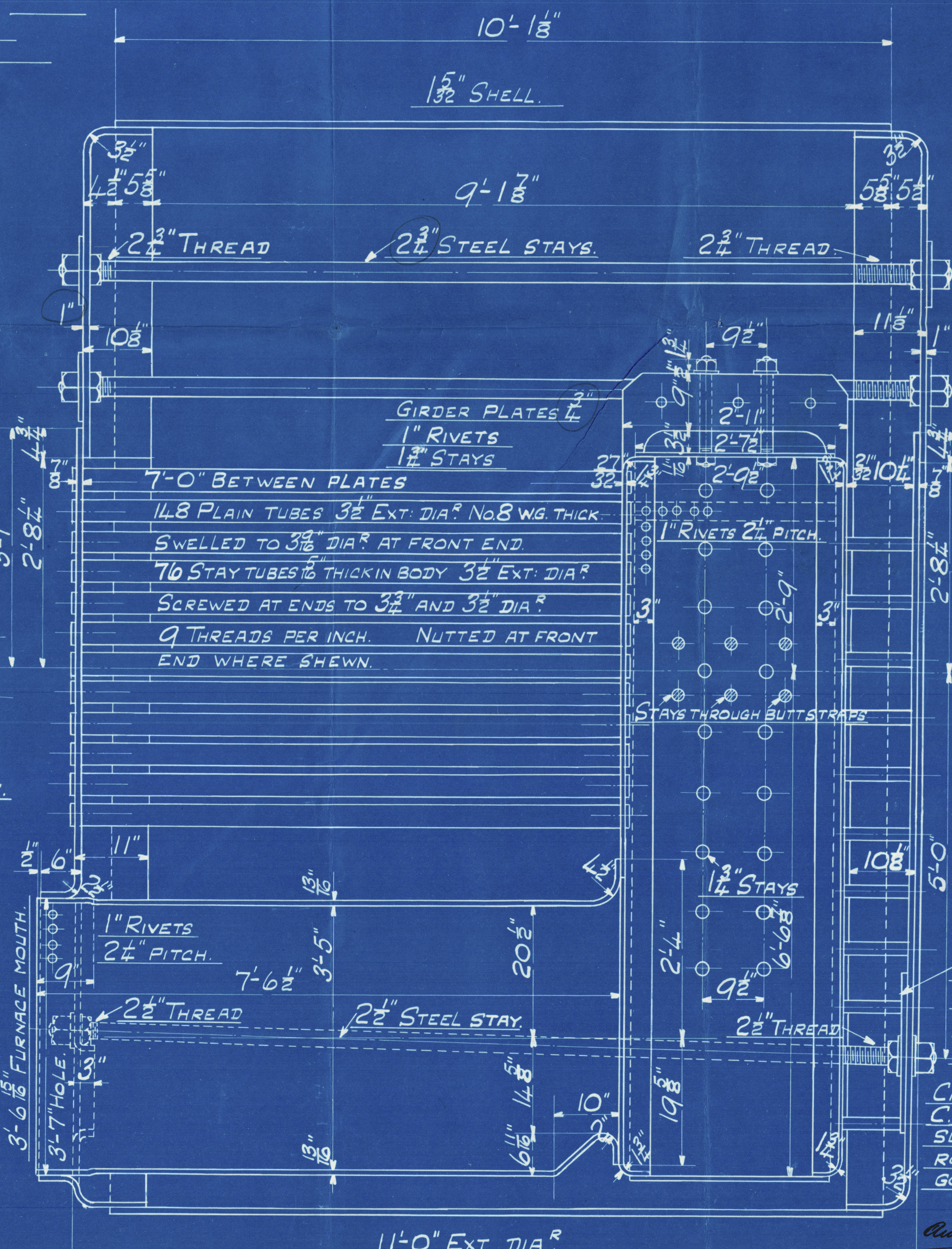
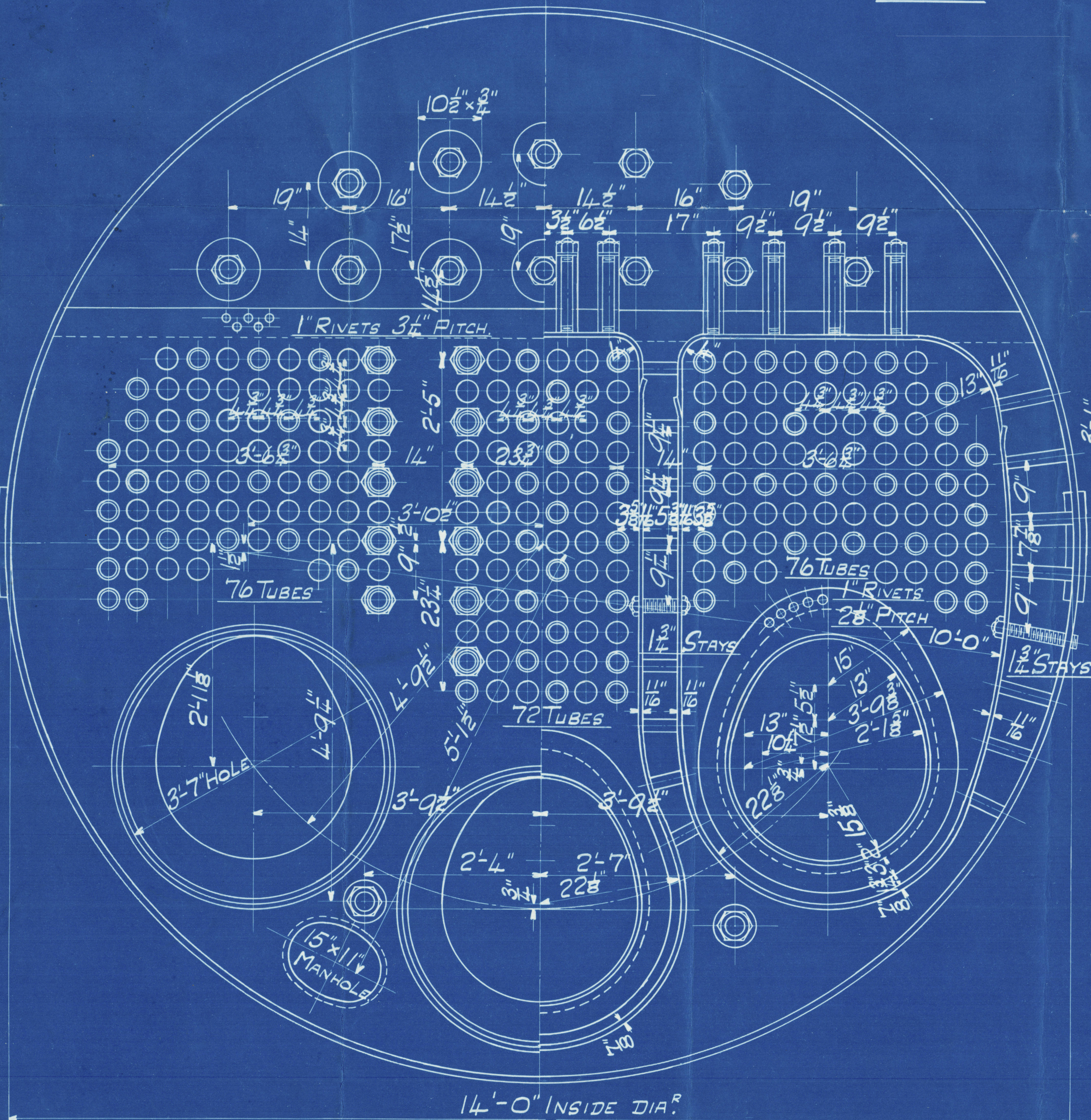
Amos & Smith L<sup>td</sup>  
ENGINEERS.  
ALBERT DOCK WORKS.  
HULL.

ALL RIVETS IN BUTT STRAPS AND END SEAMS 1 1/2" DIA<sup>r</sup> HOLES 1 1/8" DIA<sup>r</sup>.  
CIRC: SEAMS 9/10 PLATE 67.2 9/10 RIVET 45.6  
LONGIT: SEAMS 9/10 PLATE 85.4 9/10 RIVET 88.8  
OUTSIDE BUTTS 1" THICK INSIDE 1" THICK  
TENSILE STRENGTH SHELL PLATES AND BUTT STRAPS 28-32 TONS 1 INCH.



NOTE :- THE PLATES, RIVETS, AND STAYS OF STEEL BY THE SIEMENS MARTIN PROCESS.  
ALL RIVET HOLES DRILLED THROUGHOUT THE BOILER THOSE IN SHELL AFTER THE PLATES ARE BENT.  
STAYS ARE NOT TO BE WELDED TUBES ARE OF IRON  
THE TENSILE STRENGTH OF THE SHELL PLATES AND BUTT STRAPS TO BE BETWEEN 28 AND 32 TONS PER SQ INCH.  
THE COMBUSTION CHAMBER STAYS ARE SCREWED INTO BOTH PLATES AND FITTED WITH A NUT AT EACH END EXCEPT ON OUTSIDE OF CIRCULAR SHELL.

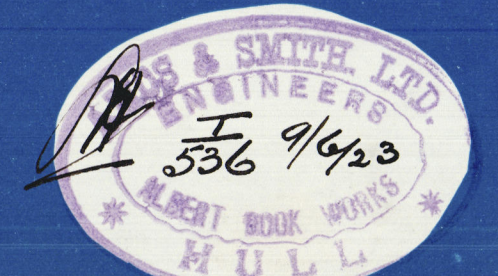
PARTICULARS OF STAYING			
STAYS	DIA <sup>r</sup>	AREA BOTTOM OF THREAD	THREADS PER IN.
LONGITUDINAL STAYS	2 1/2"	5.055 D IN.	6
BOTTOM STAYS	2 1/2"	4.11 "	6
C.C. STAYS	1 3/4"	2.36 "	9
" "	1 3/4"	2.03 "	9
" "	1 3/4"	1.73 "	9
STAY TUBES (5/16)	3 1/2"	2.364 "	9



10663.

STEEL BOILER N<sup>o</sup> 3499.

Amended Copy



TITLE :- STEEL BOILER  
FOR WHOM :- A.S. L<sup>td</sup>  
DATE :- 17.5.23.  
ORDER :- 3499.  
SCALE :- 1" = ONE FOOT.

W310-0135 2/2



A.S. 85—2000—3/22—EW

From AMOS & SMITH, Ltd., HULL.

ENCLOSURE FOR

*Lloyds Surveyors*

*Hull*

Lloyd's Register  
Foundation

0135  $\frac{1}{2}$

Messrs Amos & Smith, Ltd.

Boiler No 3499

AMENDED PLAN.

$\frac{3}{5}$  - Blue Falcon  
Hull Rpt No. 35272



W340-0135

© 2020

Lloyd's Register  
Foundation