

MIDSHIP SECTION. T. S. S. No 617. and 618.

MOULDED DIMENSIONS 495'-0" (SECT. 3 PARA. 1) x 61'-6" x 40'-6" TO UPPER D^K TO CLASS 100 A1 LLOYDS.

SCALE 1/2" = ONE FOOT.

STRENGTHENED FOR ICE NAVIGATION
PLAN TO BE SUBMITTED

LLOYDS NUMERALS	EQUIPMENT NUMERAL	EQUIPMENT
D = 40'-6"	L (B+D)	50490
L x D = 495 x 40.5 = 20099	FORECASTLE 1/4 (125/75)	214
L (B+D) = 495 x 102 = 50490	HOUSE ON UPPER D ^K 1/4 (125/75)	416
1/2 TO UPPER DECK = 495 x 12.25 = 6063	BRIDGE 1/4 (125/75)	416
d = 15.45		
	51656	2 @ 100 FATHOMS 8" HEMP HAWKERS
	2 @ 100	8" WARPS

FRAME SPACING
FRAMES SPACED 24' APART IN PEAKS.
27' APART FROM 1/3 LENGTH FROM STEM FORWARD TO COLLISION BND.
36' APART ELSEWHERE [RULE = 33 1/4']

FOR FRAME SCANTLINGS SEE PROFILE

RIVETING TABLE END CONNECTIONS		
ITEM	FOR 1/2L AMIDSHIPS	AT ENDS
KEEL	QUADRUPLE	QUADRUPLE
SHELL FROM KEEL TO FORECASTLE SIDE PLATING	QUADRUPLE	TREBLE
SHELL FROM FORECASTLE SIDE PLATING TO STERN	QUADRUPLE	TREBLE
SHEERSTRAKE	QUINTUPLE	TREBLE
STRAKE BELOW SHEERSTRAKE	QUADRUPLE	TREBLE
FORECASTLE SIDE PLATING		SINGLE
UPPER DECK STRINGER	QUINTUPLE	TREBLE
PLATING	TREBLE (OUTSIDE OPENINGS)	SINGLE NOT EXC. 48"
SECOND STRINGER	TREBLE	DOUBLE NOT EXC. 48"
PLATING	DOUBLE (OUTSIDE OPENINGS)	SINGLE NOT EXC. 48"
THIRD STRINGER	DOUBLE	DOUBLE
PLATING	DOUBLE (OUTSIDE OPENINGS)	SINGLE
FORECASTLE D ^K STRINGER		SINGLE
PLATING		SINGLE
CENTRE GIRDER	QUADRUPLE	TREBLE NOT EXC. 60"
MARGIN PLATE	TREBLE	TREBLE
TANK TOP CENTRE STRAKE	TREBLE	DOUBLE NOT EXC. 48"
PLATING	TREBLE	DOUBLE

EDGE CONNECTIONS		
KEEL	DOUBLE	DOUBLE
SHELL	DOUBLE	DOUBLE
FORECASTLE SIDE PLATING		SINGLE
TANK TOP C ^K STRAKE	DOUBLE	DOUBLE
MARGIN PLATE	DOUBLE	DOUBLE
DECK PLATING	SINGLE	SINGLE
SHEERSTRAKE	TREBLE	DOUBLE
UPPER DECK STRINGER	DOUBLE	SINGLE NOT EXC. 60"

UPPER DECK	
BEAMS	
BEAM KNEES	
STRINGER	
STRINGER ANGLE	6" x 6" x 6" - 5" x 5" x 4" 8" x 8" x 3" 2" x 4"
PLATING	
DECK COVERING	COMPOSITION INSIDE MIDSHIP HOUSE BARK STEEL DECK ELSEWHERE

SECOND DECK	
BEAMS	
BEAM KNEES	
STRINGER	
STRINGER ANGLE	3" x 3" x 3" - 3"
INNER ANGLE	3" x 3" x 3" - 3"
PLATING	
DECK COVERING	NONE

THIRD DECK	
BEAMS	
BEAM KNEES	
STRINGER	
STRINGER ANGLE	3" x 3" x 3" - 3"
INNER ANGLE	3" x 3" x 3" - 3"
PLATING	
DECK COVERING	NONE

SPARRING
HOLDS & TWEEN DECKS = 6" x 2" BALTIC WHITE
WOOD, 8' APART. NONE IN INSULATED SPACES.

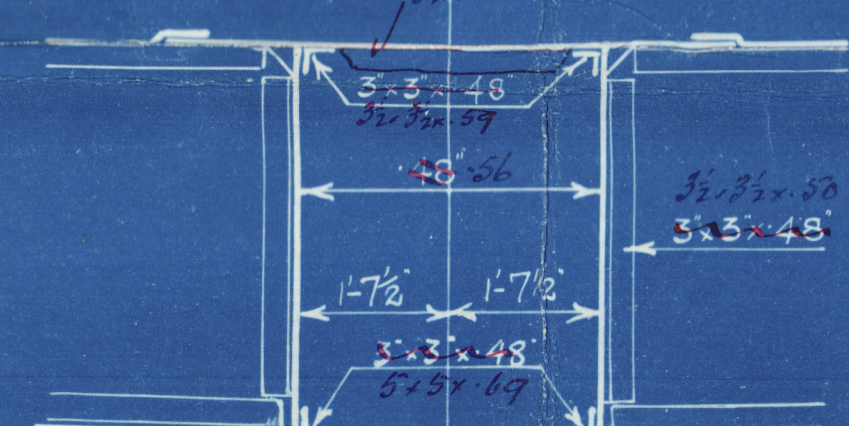
FOR RIVETING IN WAY OF
PAINTING AREA⁷ SEE SPECIAL PLAN 148 RULE 50

27" x 30" RULE 30
23" x 20" RULE 30

2" W.P. CEILING UNDER
SQUARE OF HATCHES ONLY

INTERCOSTAL CRANKED UNDER PILLARS
NO LIGHTENING HOLES TO BE PUNCHED
IN FLOORS OR INTERCOSTALS UNDER PILLARS.

BLGE KEEL 6" x 5" x 50' TEE BAR
12" x 50' BULB PLATE
FOR ABOUT 190' AMIDSHIPS



SECTION THROUGH KEEL
IN NOS 2 & 3 O.B. TANKS

APPROVED
LLOYDS REGISTER OF SHIPPING
Date 11.7.26

Approved for 618 (6-8-26)



W. 001-0078

Barclay, Curle Hos No 617

Turbine S.S. Beaverford,

Midship Section.



© 2020

Lloyd's Register
Foundation

W339-0076