

MESSRS. THE BRITISH MOLASSES CO. LTD.

DONKEY BOILER. ONE THUS.

PER BLR NO.

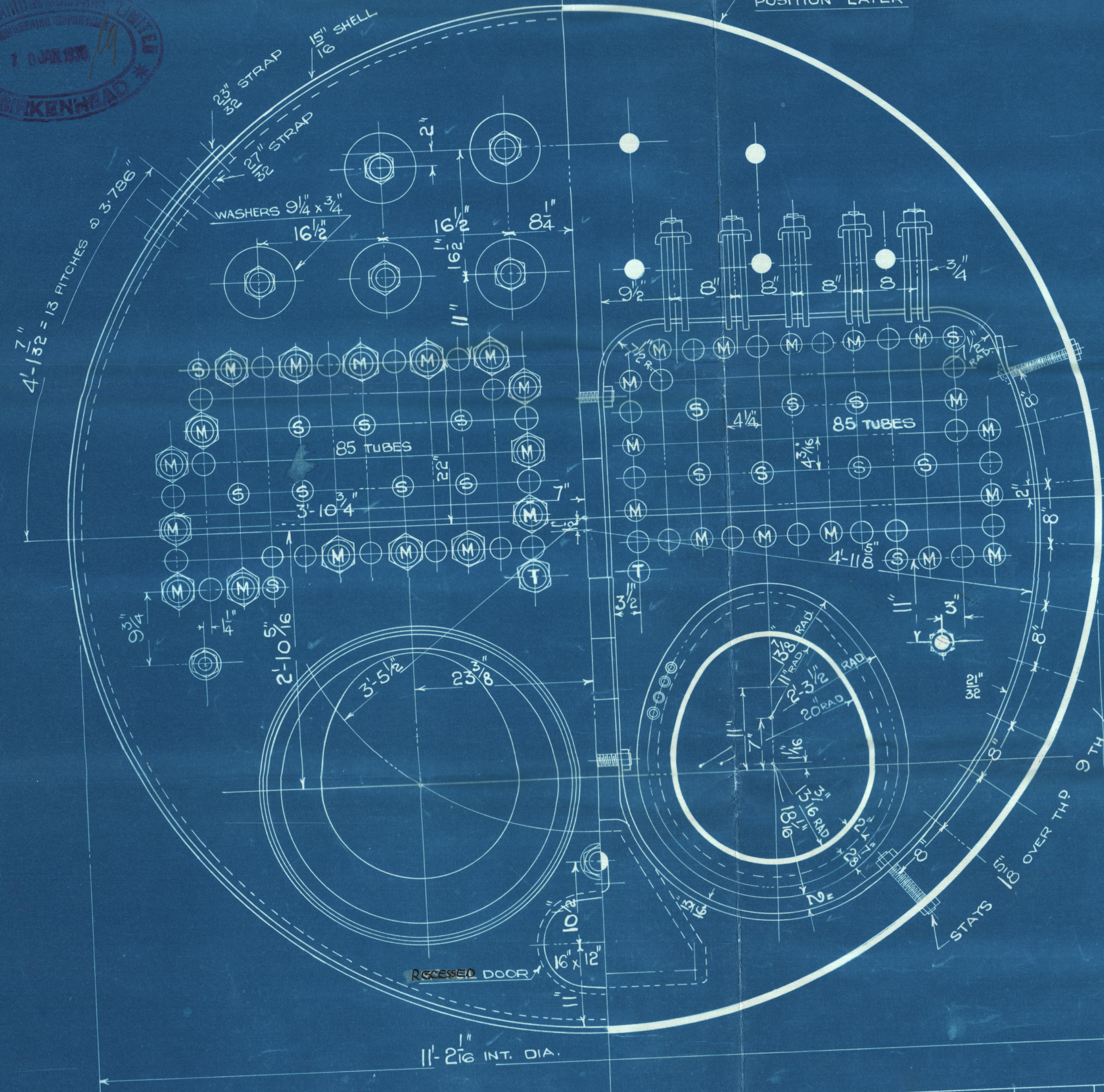
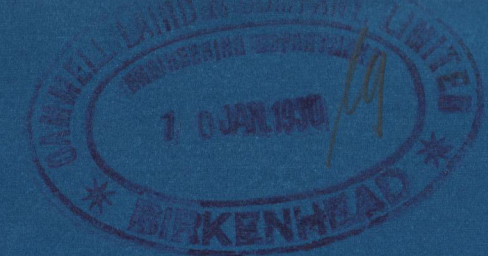
HEATING SURFACE OF TUBES 923.1 SQUARE FT.
" " FURNACES ETC. 297.85 " "
TOTAL 1220.95 " "

OIL FUEL

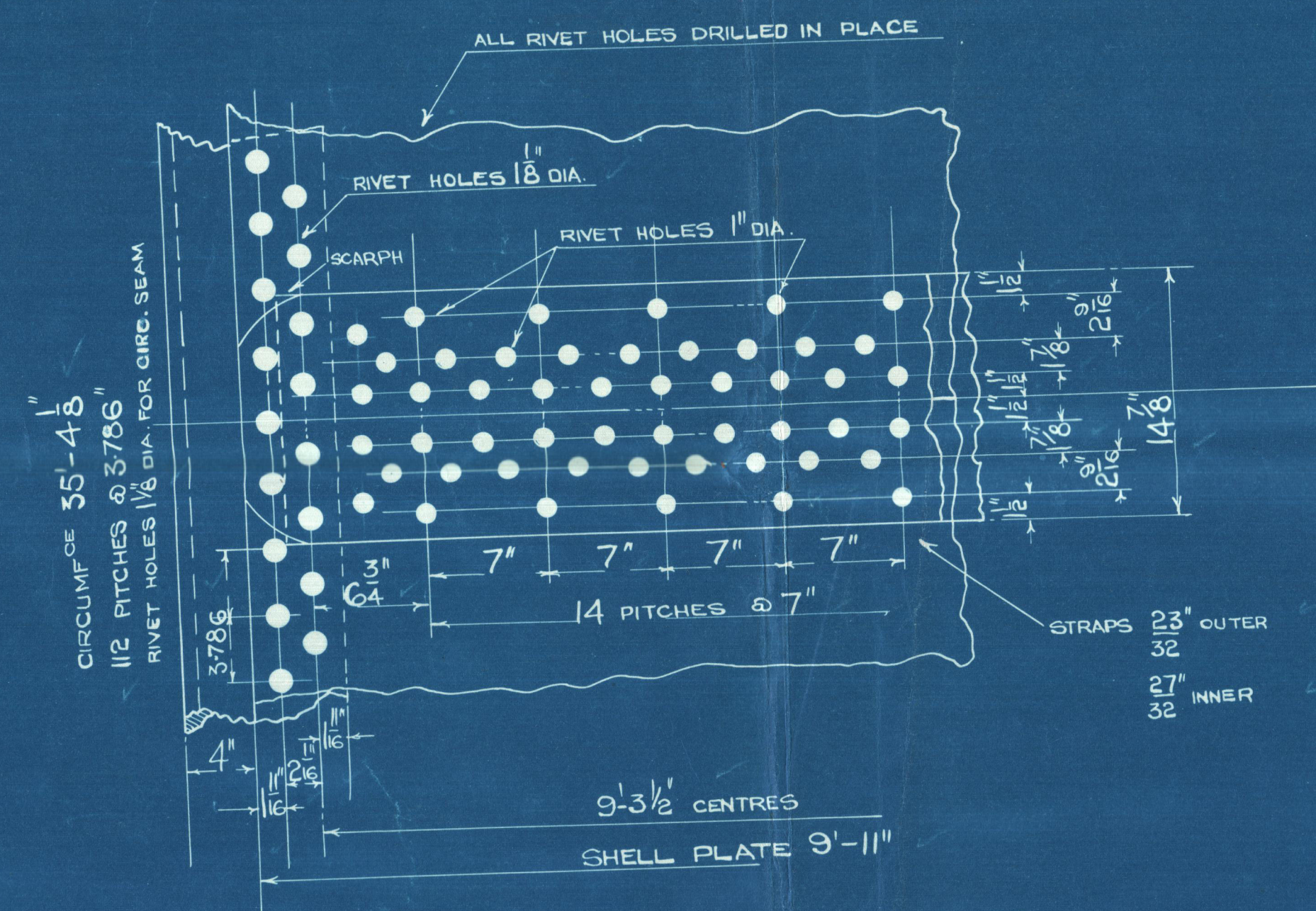
WORKING PRESSURE 180 LBS. PER SQUARE INCH.
TEST " 320 " " " "

LLOYD'S TESTS & REQUIREMENTS

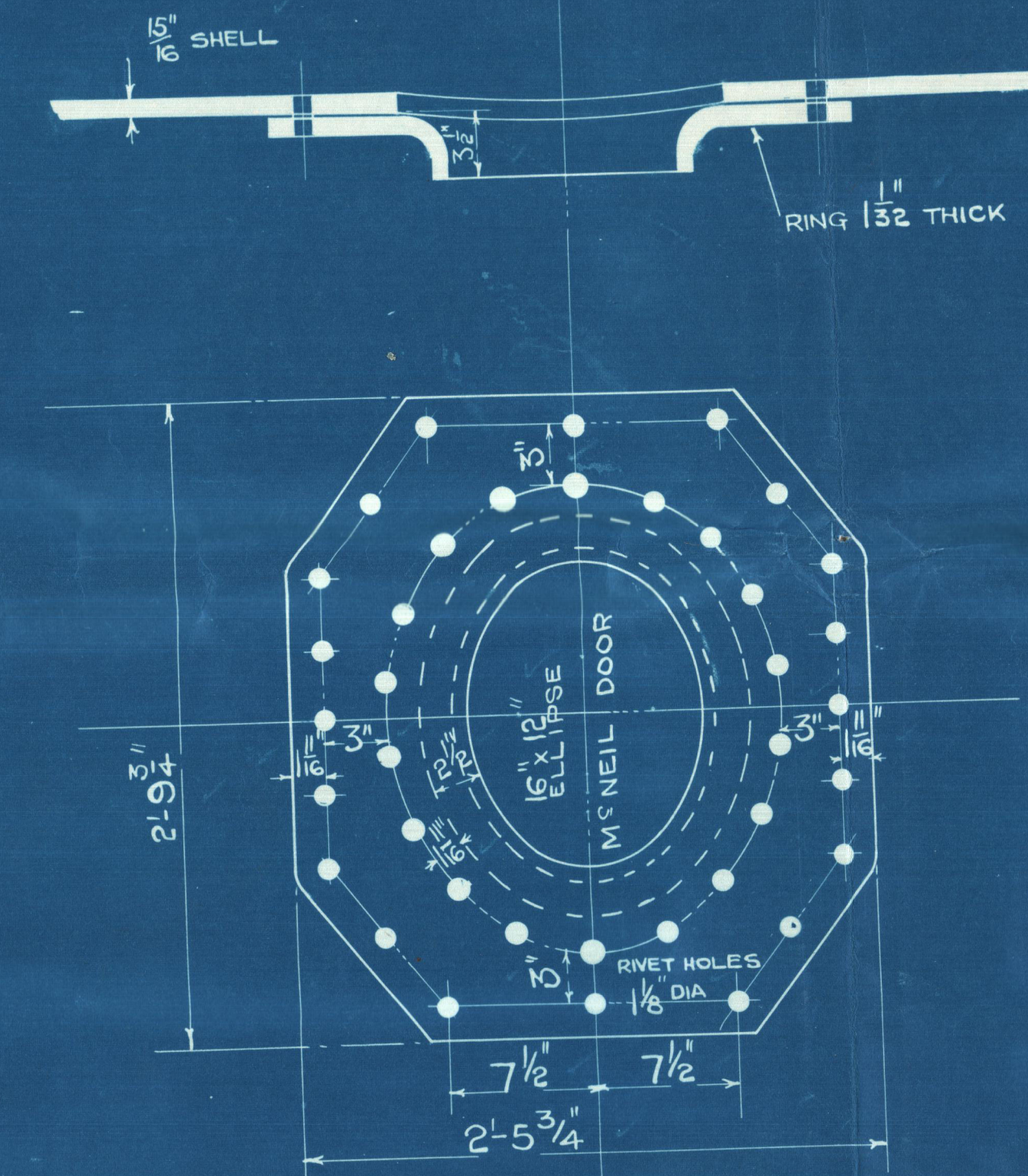
202622



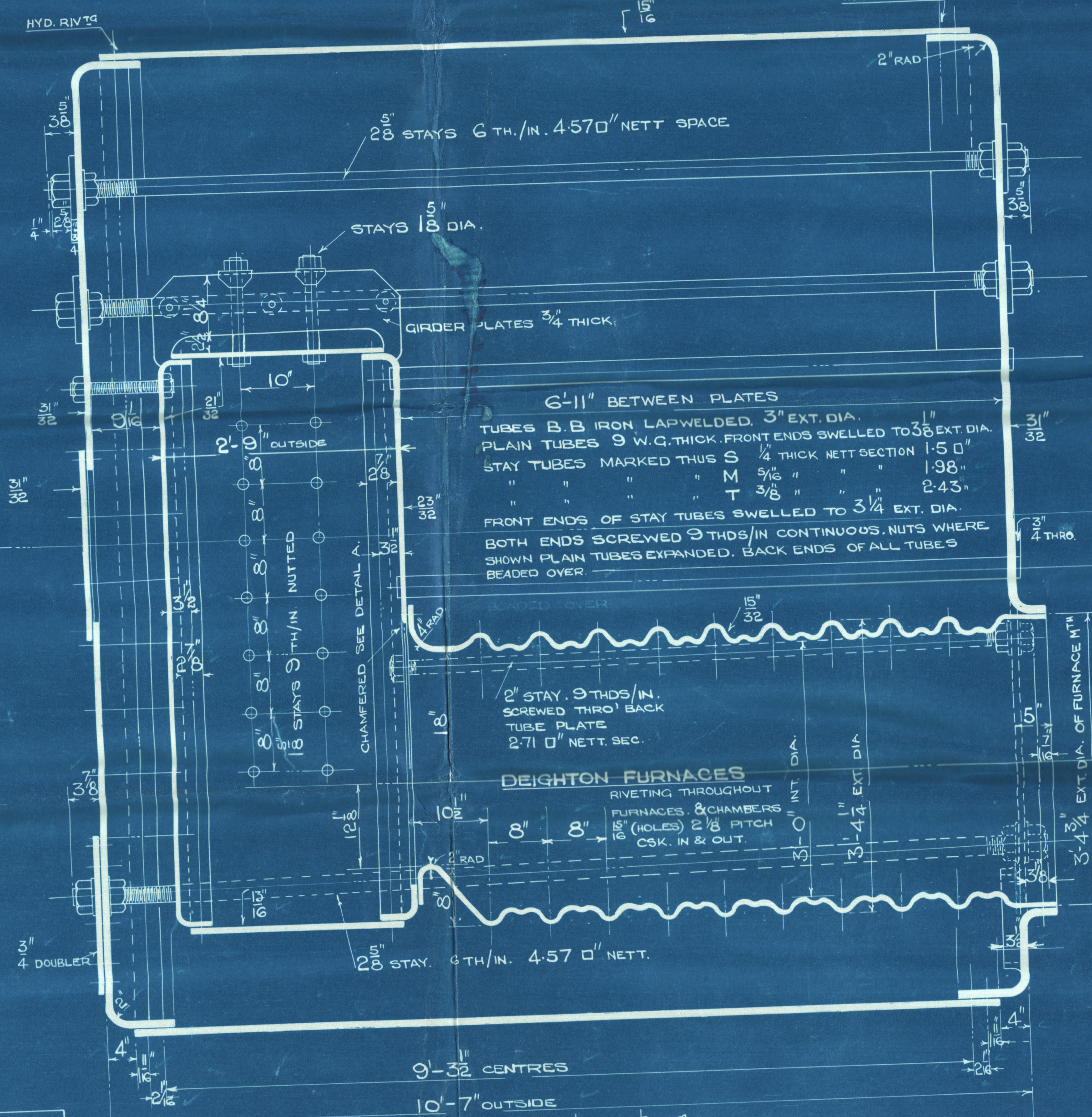
MATERIAL FOR	OF	M.T.S
SHELL, STRAPS, GIRDERS, & MAIN STAYS	STEEL	28/32 TONS/0"
CLOSING PLATES, WASHERS & DOUBLINGS	"	" " " "
ENDS, COMB. CHA. PLATES, SCREWED	"	26/30 " "
STAYS, RIVET BARS	"	" " " "
TUBES	IRON	" " " "
DOORS & COMPENSATING RING, ORDERED	FROM CHAS. McNEIL GLASGOW	" " " "



LONGIT. SEAM PLATE % 85.71
RIVET % 92.2
COMBINED % 89.84

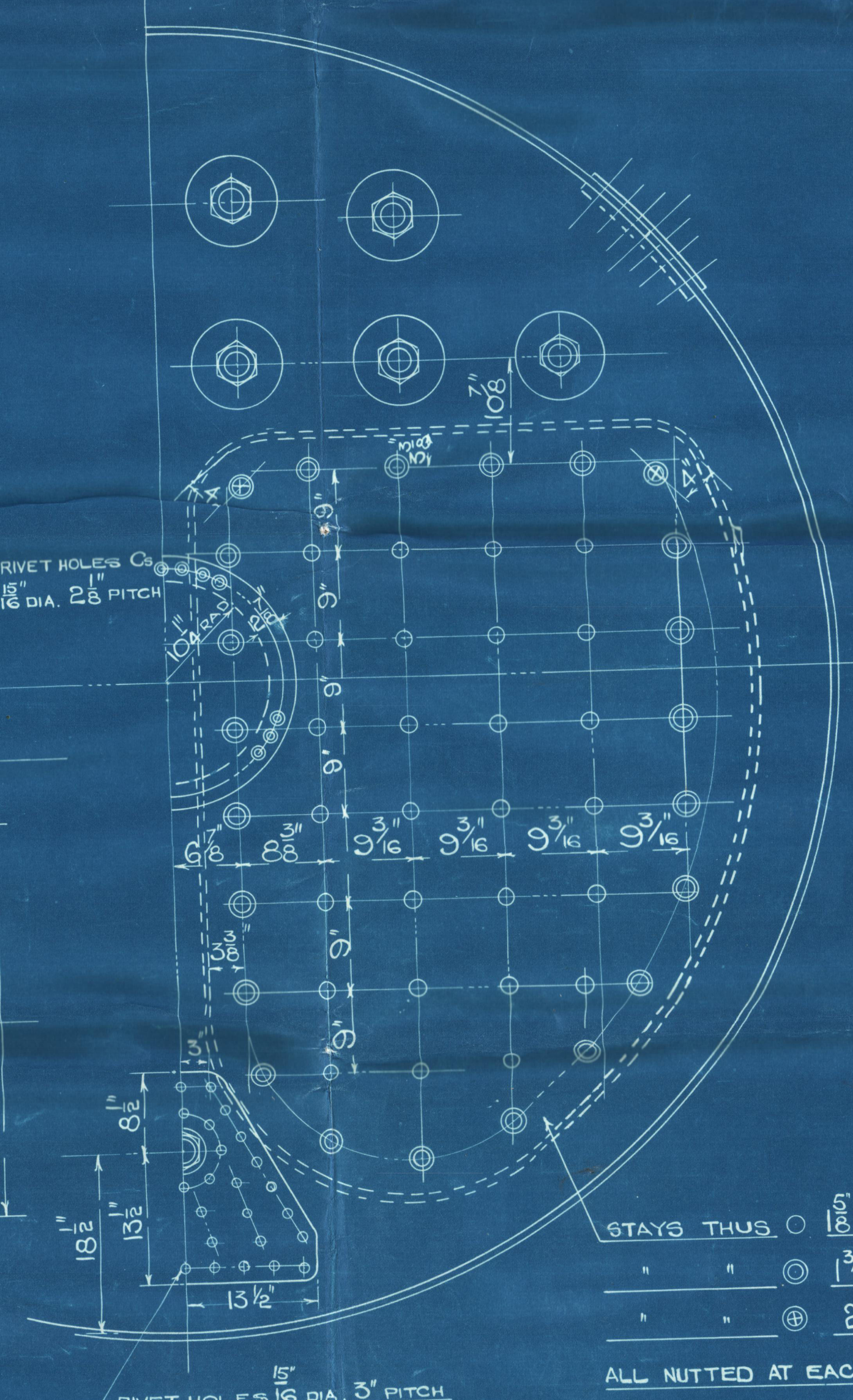


COMPENSATION FOR SHELL DOOR.
SCALE 1 1/2" = 1 FOOT.



DETAIL "A"

45° CHAMFER
FOR TOP HALF
OF OPENING



STAYS THUS: 5/16 DIA. OVER THD 9 TH/IN. 1.73 0" NETT. SEC.
" " 3/4 " " " " 2.03 " " "
" " 2" " " " " 2.71 " " "
ALL NUTTED AT EACH END

26/32 T. 16/11/30

16/11/30

SCALE 1"=1 FOOT.

W336-0059

BOILERS 972
REPEAT 973
DONKEY BOILER.

16/11/30

S. S. *Athelfoam*
LIVERPOOL
Report No. *98861*

Donkey Boilers



© 2020

Lloyd's Register
Foundation

W336-0059